

FOR SALE

\$13.00 PSF

+/- 1.28 ACRES OF LAND
0 MICHEL RD., TOMBALL, TX 77375



SITE

JOEL C. ENGLISH
PRESIDENT/PRINCIPAL
JOEL@TEXASCRES.COM
(713) 473-7200

FLAVIO BEATO
ASSISTANT VICE PRESIDENT
FLAVIO@TEXASCRES.COM
(832) 727-4475





PROPERTY HIGHLIGHTS



Location

0 Michel Road
Tomball, TX 77375



Asking Price

\$13.00 PSF



Size

+/- 1.28 AC

Contact:

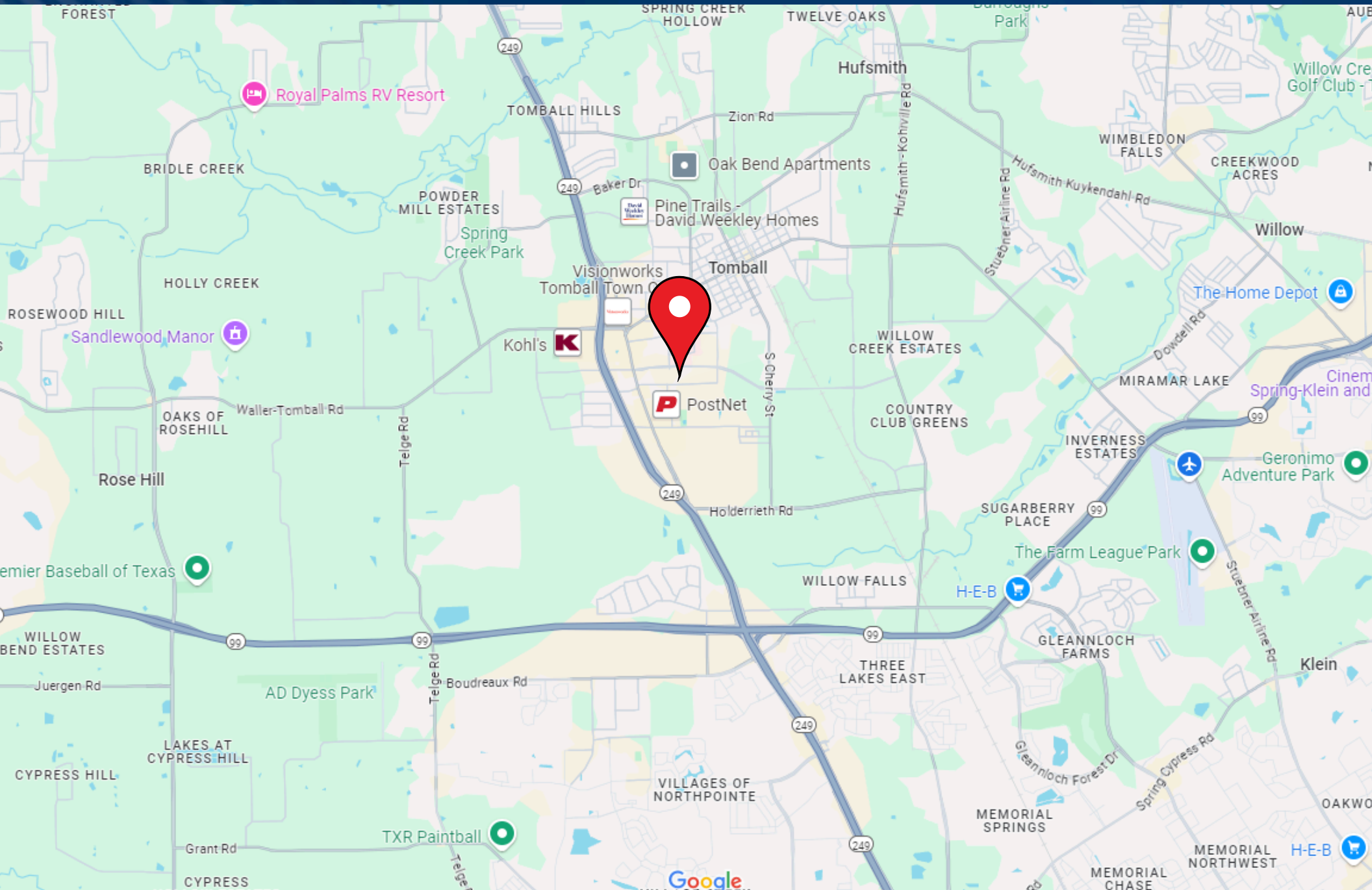
JOEL C. ENGLISH
PRESIDENT/PRINCIPAL
JOEL@TEXASCRES.COM
(713) 473-7200

FLAVIO BEATO
ASSISTANT VICE PRESIDENT
FLAVIO@TEXASCRES.COM
(832) 727-4475

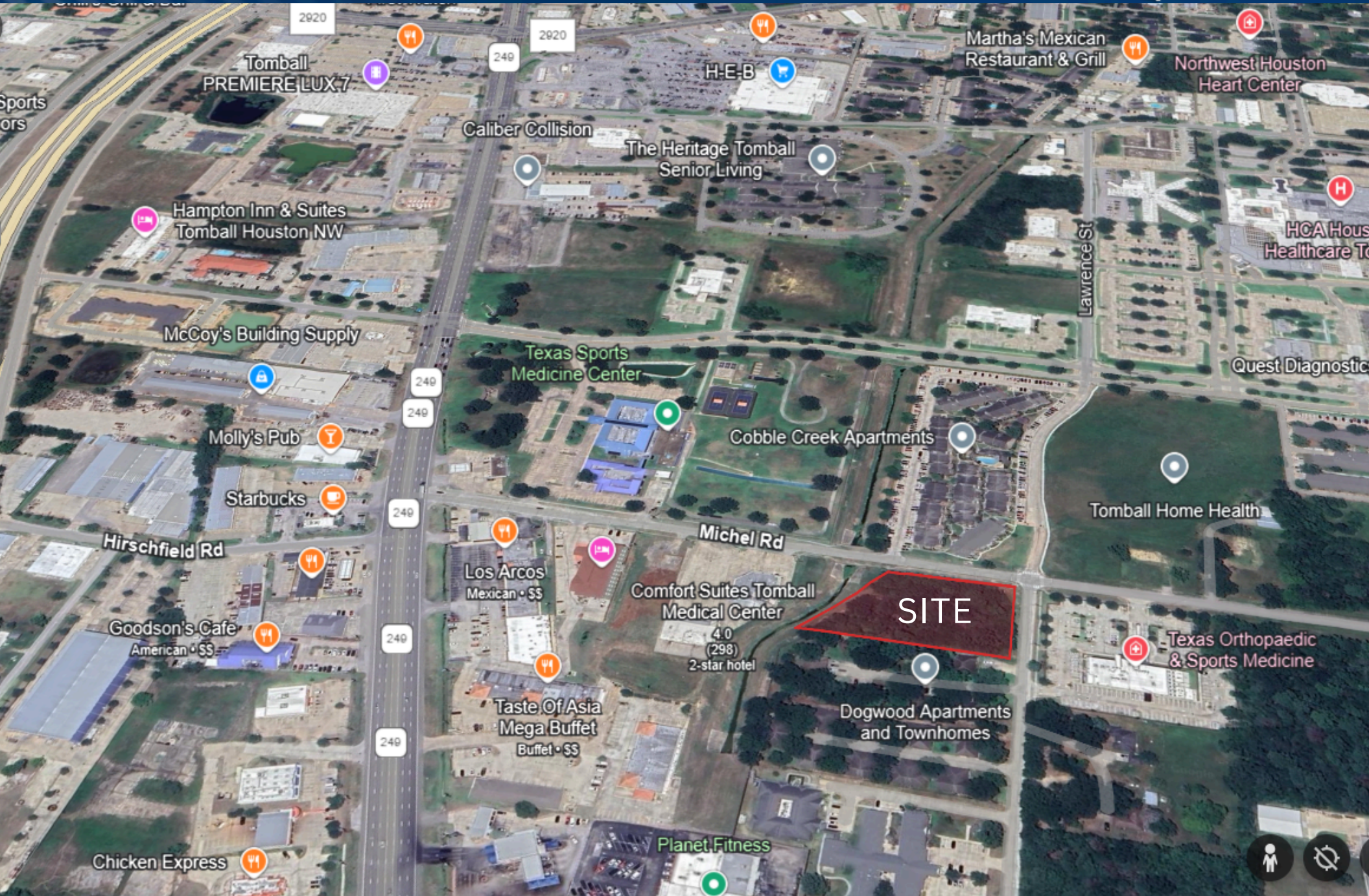
- Approximately 1.28 Acres on the Southwest Corner of Michel Road & Johnson Road in the City of Tomball, just East of SH 249
- Outstanding Investment Opportunity in Rapidly Expanding Tomball TX
- In High-Density Residential & Commercial Populated Area with Close Proximity to Freeways & Retail, Only Minutes From Downtown Tomball, Less Than Half a Mile from Tomball Regional Medical Center
- Excellent Location with Great Visibility & 155 Feet of Frontage on Michel Road & 210 Feet of Frontage on Johnson
- Located within half mile of the Tomball Regional Medical Center with easy access to State Highway 249
- Utilities available through the City of Tomball •
- Total tax rate for 2023: \$2.09 per \$100.00 of Assessed Value
- Full demographic package available



LOCATION MAP



MARKET AERIAL



SITE

DEMOGRAPHICS

DEMOGRAPHIC SUMMARY

Michel Rd, Tomball, Texas, 77375

Ring of 3 miles

KEY FACTS

30,014

Population



11,005

Households

37.8

Median Age

\$73,530

Median Disposable Income

EDUCATION

6.8%

No High School Diploma



21.0%

High School Graduate



27.7%

Some College/
Associate's Degree



44.6%

Bachelor's/Grad
/ Prof Degree



30,014

2023 Total
Population (Esri)

INCOME



\$88,081

Median Household
Income



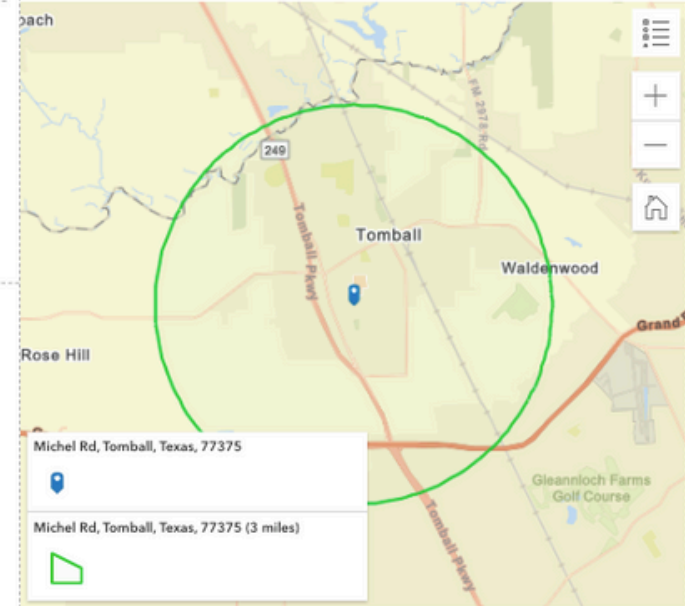
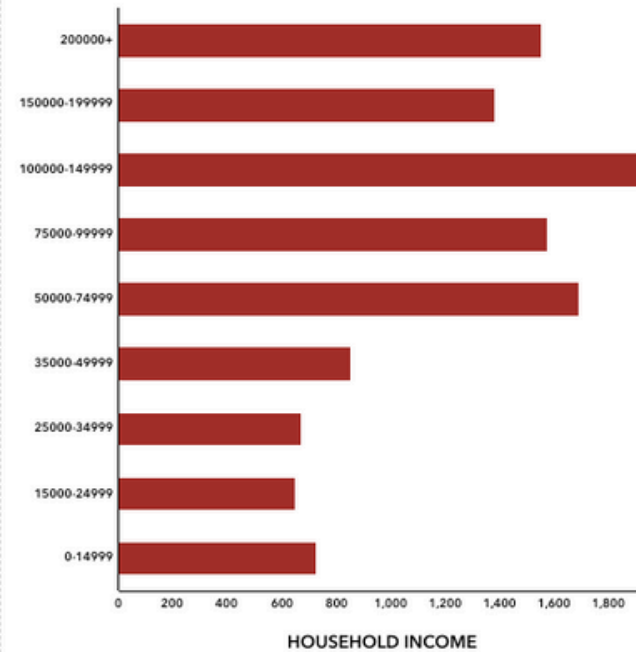
\$43,099

Per Capita Income



\$291,994

Median Net Worth



EMPLOYMENT



White Collar

68.5%



Blue Collar

17.7%



Services

15.2%

3.3%

Unemployment
Rate

Source: This infographic contains data provided by Esri (2024, 2029). © 2024 Esri



Information contained in this marketing piece is furnished by property owners and brokers who acquire the information from third party websites, county appraisal districts, appraisers, tax services and inspectors. The information is shared with Texas CRES, LLC for reference and for marketing purposes. Texas CRES, LLC makes no representations to the validity or accuracy of the information. Neither the listing Broker, or the property owner make any warranty, guarantee, or representation to the accuracy of the information. You should rely exclusively on your own property research and studies to confirm the accuracy of any information contained herein.

JOEL C. ENGLISH
PRESIDENT/PRINCIPAL
JOEL@TEXASCRES.COM
(713) 473-7200

FLAVIO BEATO
ASSISTANT VICE PRESIDENT
FLAVIO@TEXASCRES.COM
(832) 727-4475

