

OFFICE & MEDICAL SUITES FOR LEASE

WOODCOURT 20215-20315 Ventura Blvd, Woodland Hills



FEATURES

- Low Rise Office Park With Open Air Common Areas
- Open Stairway & Elevator Access
- On-Site Cafe
- Free Visitor Parking
- Ventura Blvd Signage Opportunities
- Easy Access to 101 Freeway
- Close to Providence Cedars-Sinai Tarzana Medical Ctr
- On-Site Management & Dayporter

PARKING *(per stall)*

\$44 per month	Unreserved
\$88 per month	Reserved
5/1,000 SF	

LEASE RATE

Office Rate	\$2.00 PSF FSG
Medical Rate	\$3.00 PSF FSG

AVAILABLE

SUITE	SIZE	COMMENTS
20301 Ventura Blvd		
112*	1,545 RSF	Open Floor Plan, (1) Window Office, Storage
120*	1,655 RSF	Medical Office, (7) Exam Rooms, Lab
*Suites 112 and 120 are contiguous for 3,200 RSF		
305	1,061 RSF	
315	1,034 RSF	
330	876 RSF	(3) Offices, and Open Area
20251 Ventura Blvd		
B	4,325 RSF	(9) Offices, Private Restrooms, Private Patios, and Bullpen
20259 Ventura Blvd		
A	4,033 RSF	(6) Private Offices, Open Area, Private Restrooms, Mezzanine Area with Breakroom & Private Patio

For more information please contact:

Phyllis Palin
 Executive Vice President
 Enzo Equities
 310.702.4555
 ppalin@enzoequities.com | Lic # 00923061

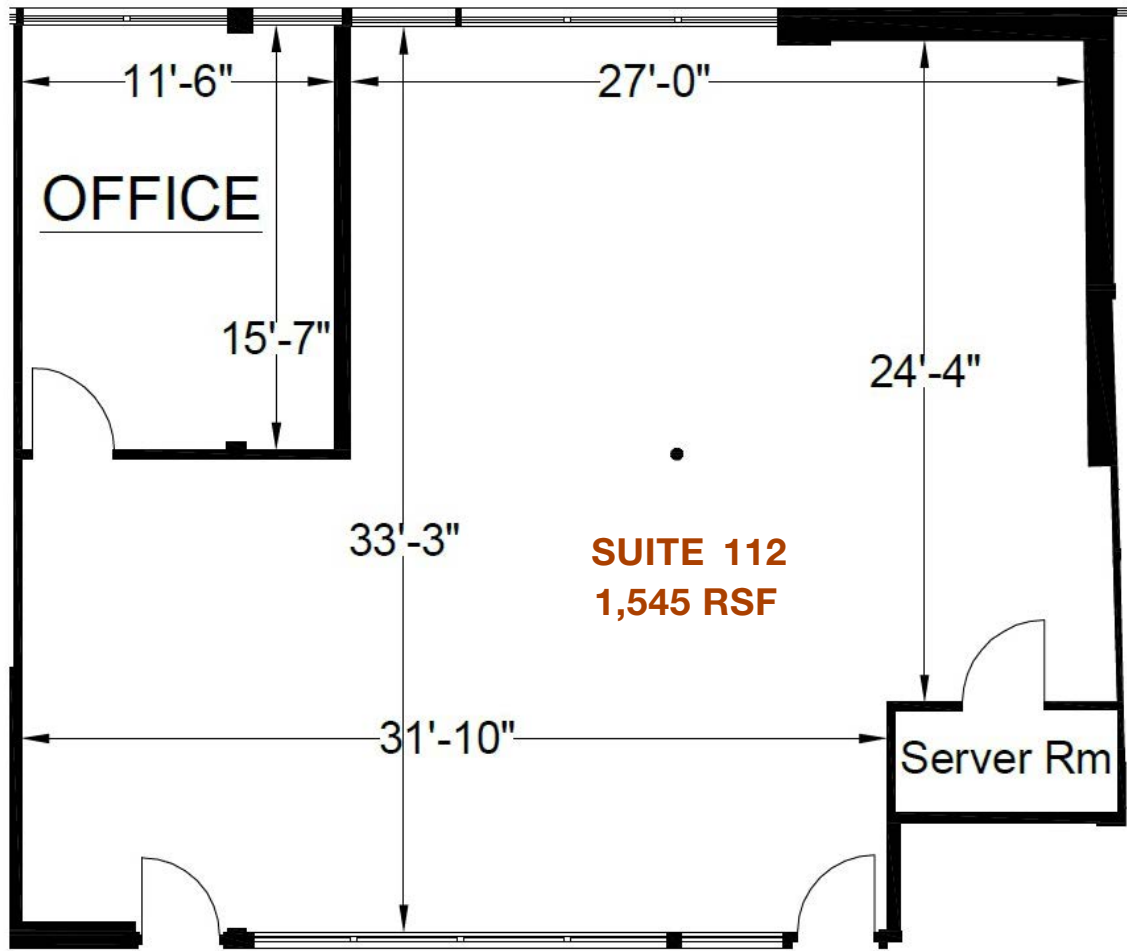


ENZO EQUITIES® | Corporate ID #02062716
 2220 Avenue of the Stars | Los Angeles, CA 90067

No warranty or representation is made to the accuracy of the foregoing information. Terms of sale or lease and availability are subject to change or withdrawal without notice.

OFFICE & MEDICAL SUITES FOR LEASE

WOODCOURT 20215-20315 Ventura Blvd, Woodland Hills



NOT TO SCALE

For more information please contact:

Phyllis Palin
Executive Vice President
Enzo Equities
310.702.4555

ppalin@enzoequities.com | Lic # 00923061

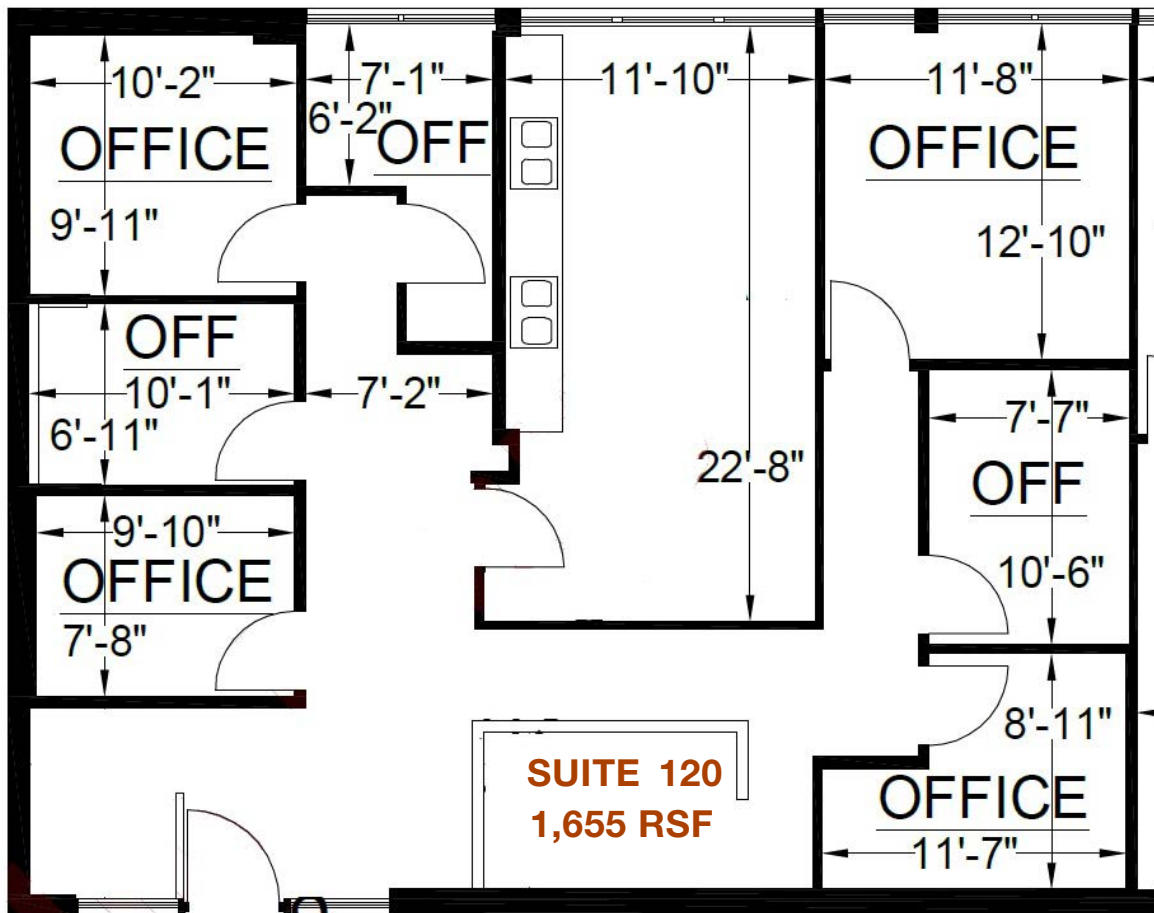


ENZO EQUITIES® | Corporate ID #02062716
2220 Avenue of the Stars | Los Angeles, CA 90067

No warranty or representation is made to the accuracy of the foregoing information. Terms of sale or lease and availability are subject to change or withdrawal without notice.

OFFICE & MEDICAL SUITES FOR LEASE

WOODCOURT 20215-20315 Ventura Blvd, Woodland Hills



NOT TO SCALE

For more information please contact:

Phyllis Palin
Executive Vice President
Enzo Equities
310.702.4555

ppalin@enzoequities.com | Lic # 00923061



ENZO EQUITIES® | Corporate ID #02062716
2220 Avenue of the Stars | Los Angeles, CA 90067

No warranty or representation is made to the accuracy of the foregoing information. Terms of sale or lease and availability are subject to change or withdrawal without notice.

OFFICE & MEDICAL SUITES FOR LEASE

WOODCOURT 20215-20315 Ventura Blvd, Woodland Hills

**SUITE
305
1,061 RSF**

NOT TO SCALE

For more information please contact:

Phyllis Palin
Executive Vice President
Enzo Equities
310.702.4555

ppalin@enzoequities.com | Lic # 00923061



ENZO EQUITIES® | Corporate ID #02062716
2220 Avenue of the Stars | Los Angeles, CA 90067

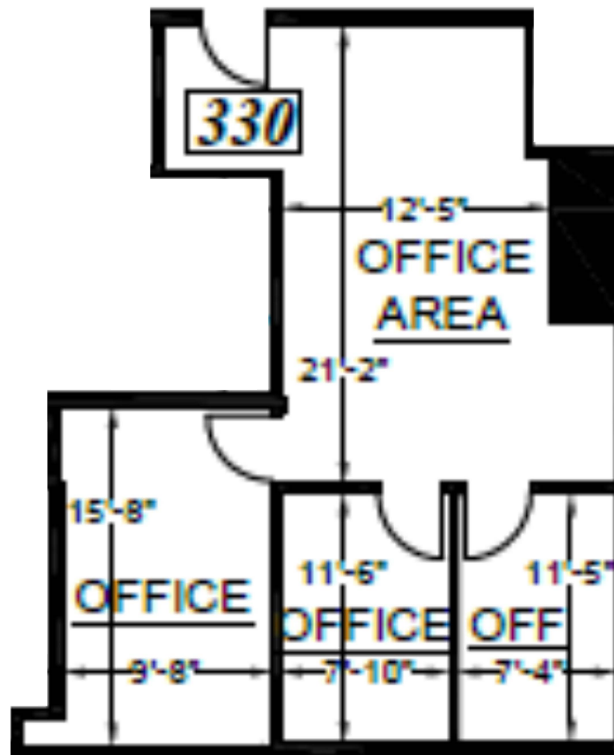
No warranty or representation is made to the accuracy of the foregoing information. Terms of sale or lease and availability are subject to change or withdrawal without notice.

OFFICE & MEDICAL SUITES FOR LEASE

WOODCOURT 20215-20315 Ventura Blvd, Woodland Hills

SUITE 330

876 RSF



NOT TO SCALE

For more information please contact:

Phyllis Palin
Executive Vice President
Enzo Equities
310.702.4555

ppalin@enzoequities.com | Lic # 00923061

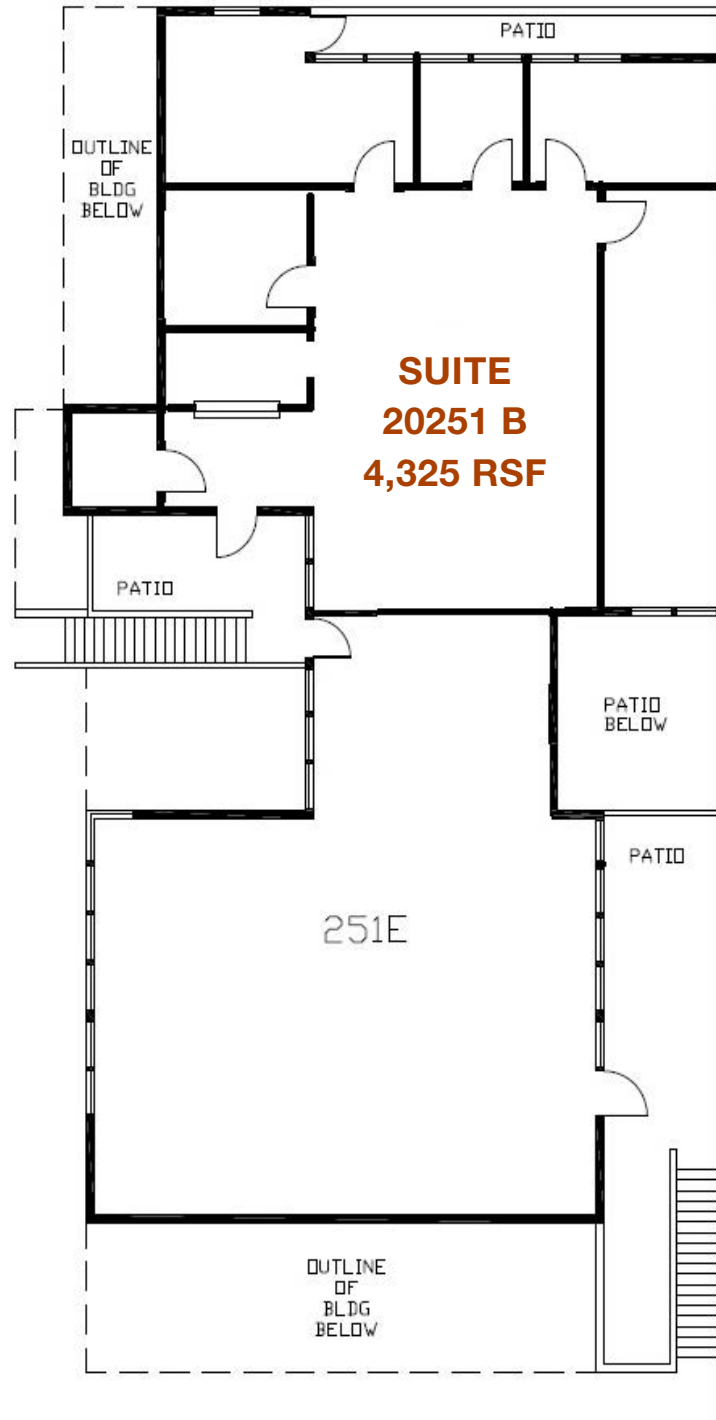


ENZO EQUITIES® | Corporate ID #02062716
2220 Avenue of the Stars | Los Angeles, CA 90067

No warranty or representation is made to the accuracy of the foregoing information. Terms of sale or lease and availability are subject to change or withdrawal without notice.

OFFICE & MEDICAL SUITES FOR LEASE

WOODCOURT 20215-20315 Ventura Blvd, Woodland Hills



NOT TO SCALE

For more information please contact:

Phyllis Palin
Executive Vice President
Enzo Equities
310.702.4555
ppalin@enzoequities.com | Lic # 00923061



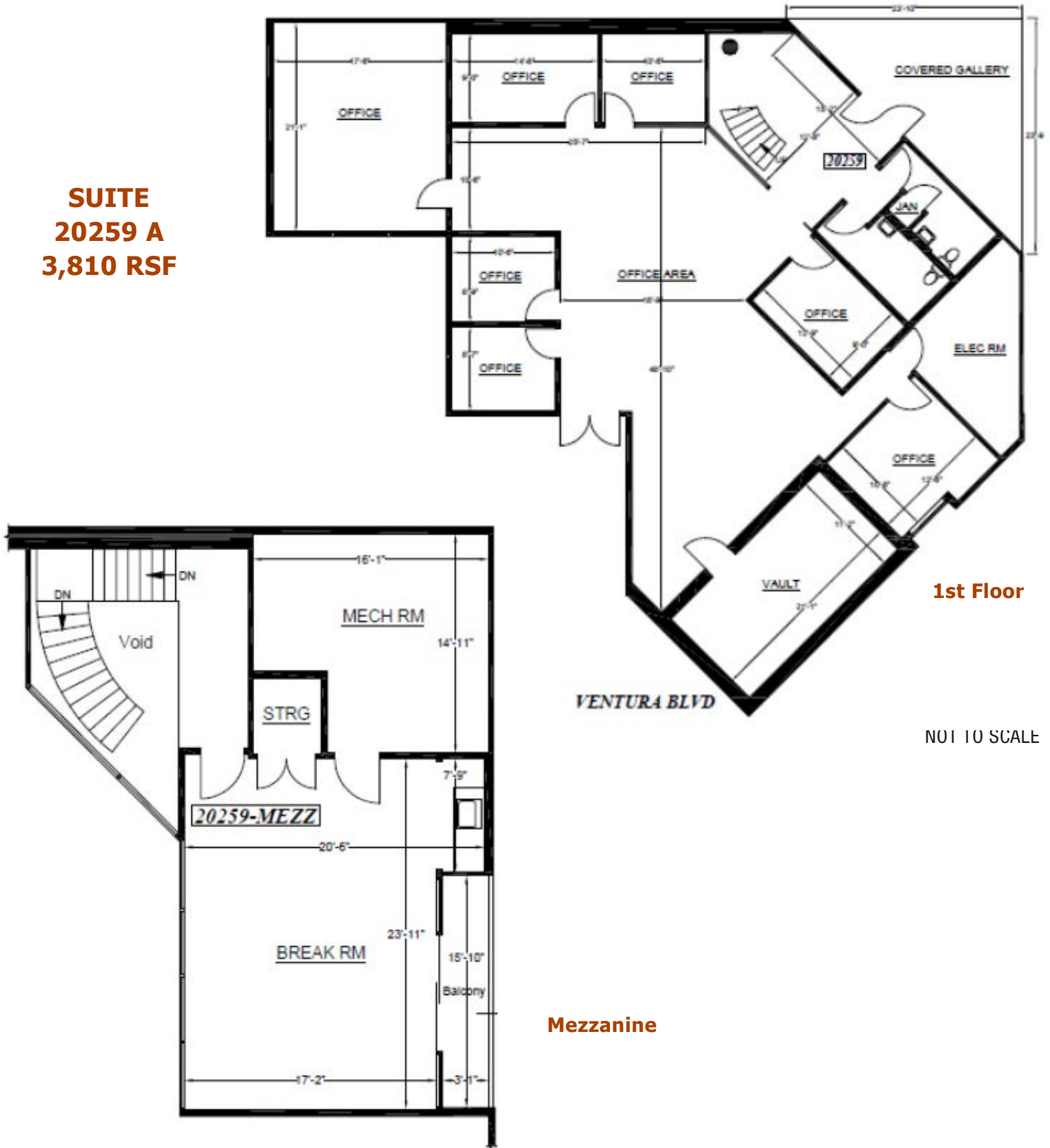
ENZO EQUITIES® | Corporate ID #02062716
2220 Avenue of the Stars | Los Angeles, CA 90067

No warranty or representation is made to the accuracy of the foregoing information. Terms of sale or lease and availability are subject to change or withdrawal without notice.

OFFICE & MEDICAL SUITES FOR LEASE

WOODCOURT 20215-20315 Ventura Blvd, Woodland Hills

**SUITE
20259 A
3,810 RSF**



For more information please contact:

Phyllis Palin
Executive Vice President
Enzo Equities
310.702.4555
ppalin@enzoequities.com | Lic # 00923061



ENZO EQUITIES® | Corporate ID #02062716
2220 Avenue of the Stars | Los Angeles, CA 90067

No warranty or representation is made to the accuracy of the foregoing information. Terms of sale or lease and availability are subject to change or withdrawal without notice.