

OFFICE/RETAIL SPACE FOR LEASE

2230-2232 S. E. Washington Blvd. - Bartlesville, OK



PROPERTY HIGHLIGHTS



SHEILA COOPER

Cell: 918-724-5140

scooper@bauertulsa.com

- AVAILABLE SPACES: #102 (1,368 sf) | #103 (1,114 sf)
#206 (975 sf)
- FLEXIBLE 2 STORY COMMERCIAL CONDOS
- CONDOS OFFER PLUMBING FOR SALONS OR MEDICAL
- PRIVATE RESTROOMS & KITCHENETTES
- SIGNAGE AVAILABLE WITH HIGHWAY VISIBILITY
- CLOSE TO RESTAURANTS & BUSINESS DISTRICT



Traffic Count

ODOT 2023

24,800 Vehicles per day

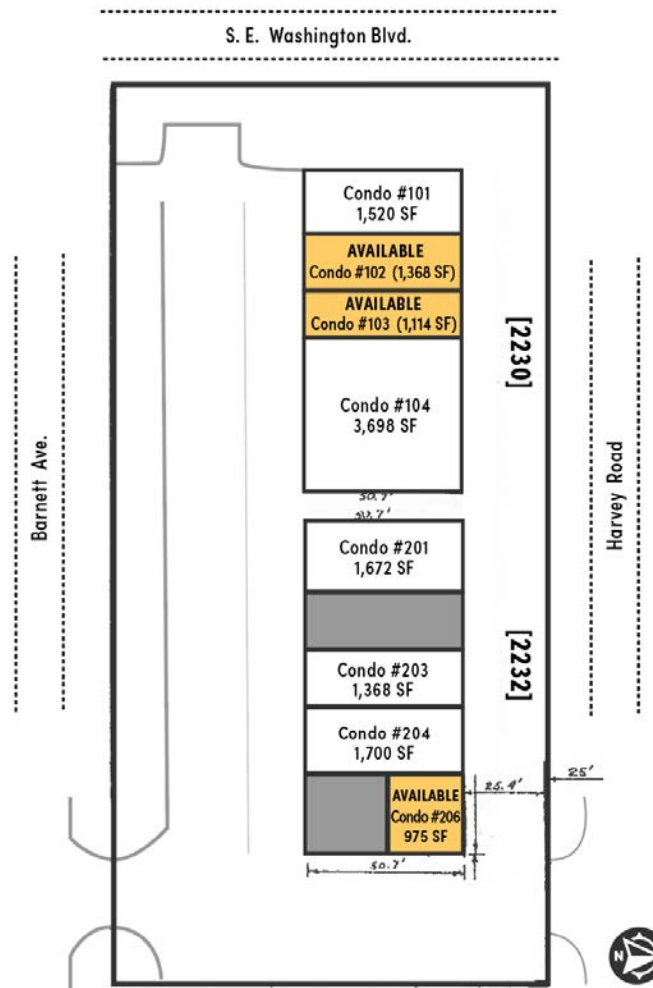
HWY 75 / S. E. Washington Blvd.



2024 Demographics

Source: ESRI

	1 Mile	3 Miles	5 Miles
Population	5,046	29,177	39,245
Households	2,066	11,974	16,008
Average HH Income	\$139,839	\$96,113	\$91,537



BAUER & ASSOCIATES, REALTORS

"A LEADER IN TULSA COMMERCIAL REAL ESTATE SINCE 1979"

Commercial - Industrial - Investment Property - Property Management

6846 S. Canton Ave., Suite 100, Tulsa, OK 74136

All statements herein are for information purposes only and are believed to be reliable; however, no warranty or representation is made as to the accuracy thereof and the same is submitted subject to errors, omissions, change of price, terms, conditions and prior sale or lease.

Office 918-665-1210

Fax 918-665-6462

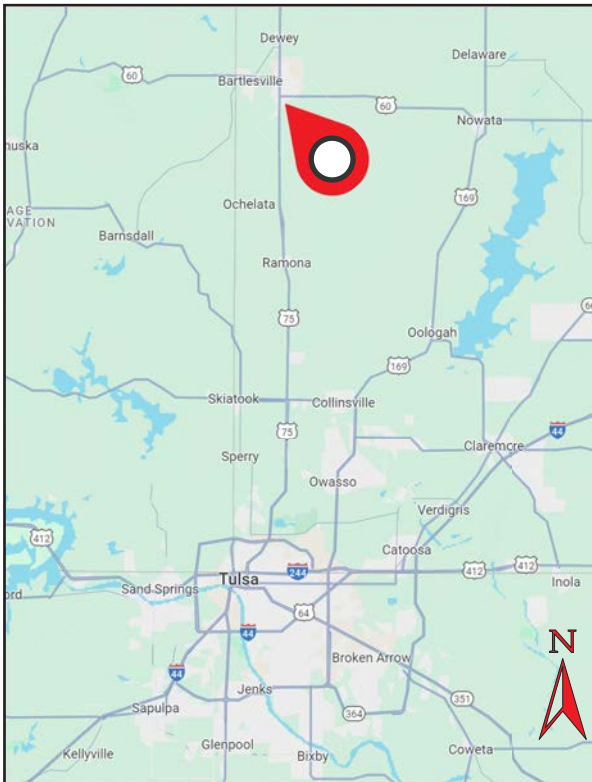
www.bauertulsa.com

OFFICE/RETAIL SPACE FOR LEASE

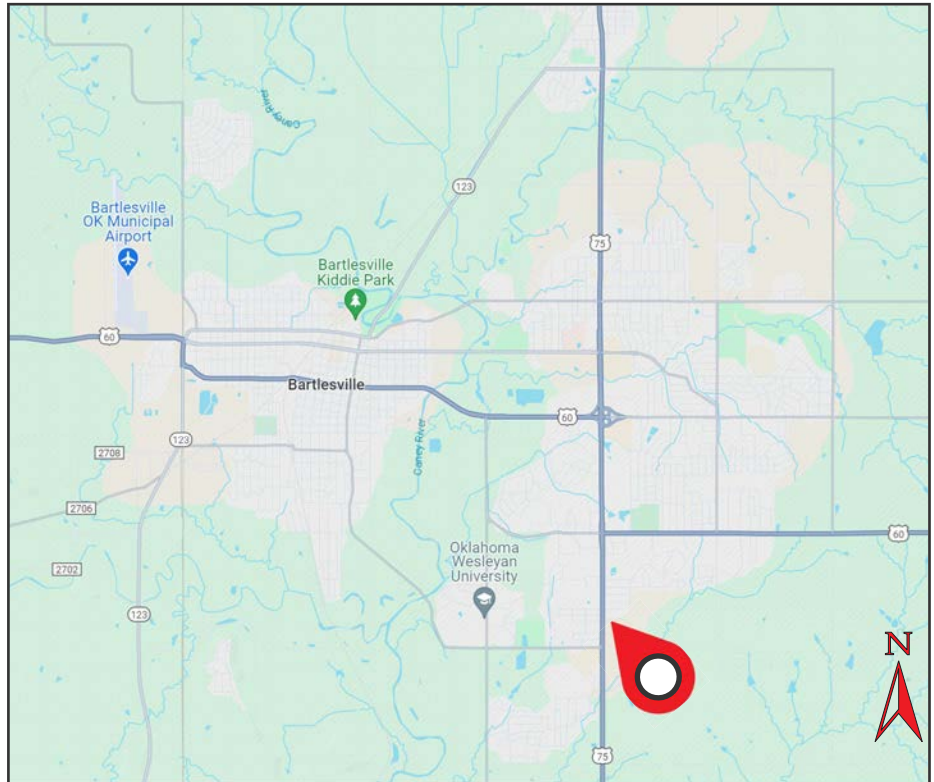
2230-2232 S. E. Washington Blvd. - Bartlesville, OK



Northeastern Oklahoma Map



Bartlesville, OK Map



BAUER & ASSOCIATES, REALTORS

"A LEADER IN TULSA COMMERCIAL REAL ESTATE SINCE 1979"

Commercial - Industrial - Investment Property - Property Management



SHEILA COOPER

Office: 918-665-1210

Cell: 918-724-5140

scooper@bauerok.com