

IRONWOOD OFFICE SUITES 6,855 SF MEDICAL OFFICE FOR SALE

10245 N. 92nd St. | Scottsdale, AZ 85260



SHEILA BALE

Managing Director
+1 602 224 4454
sheila.bale@cushwake.com

ERIKA ECKBLAD

Director
+1 602 224 4451
erika.eckblad@cushwake.com

DREW SAMPSON

Director
+1 602 820 3877
drew.sampson@cushwake.com

PROPERTY HIGHLIGHTS



ESTIMATE POPULATION

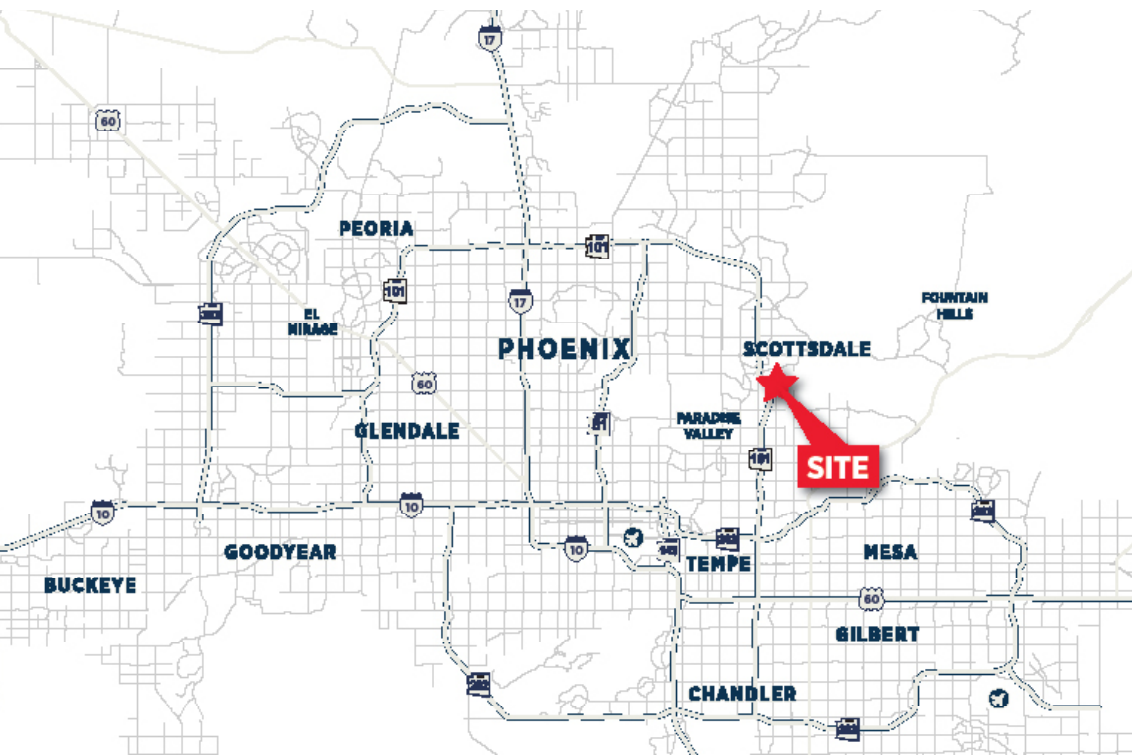
1-mile radius	3-mile radius	5-mile radius
8,544	66,705	138,918



AVERAGE HOUSEHOLD INCOME

1-mile radius	3-mile radius	5-mile radius
\$108,915	\$120,171	\$128,951

PROPERTY LOCATION



6,855 GROSS SF FREE STANDING MEDICAL OFFICE CONDOMINIUM FOR SALE



PARKING RATIO: 5/1,000
7 COVERED RESERVED



BUILDING SIGNAGE AVAILABLE



MEDICAL INTERIORS



RESTROOMS WITH LOCKERS AND SHOWER



WALKABLE TO NEARBY RETAIL AND RESTAURANTS



HOA DUES: \$2.92/SF/YR



ACROSS THE STREET FROM HONORHEALTH SHEA MEDICAL CENTER



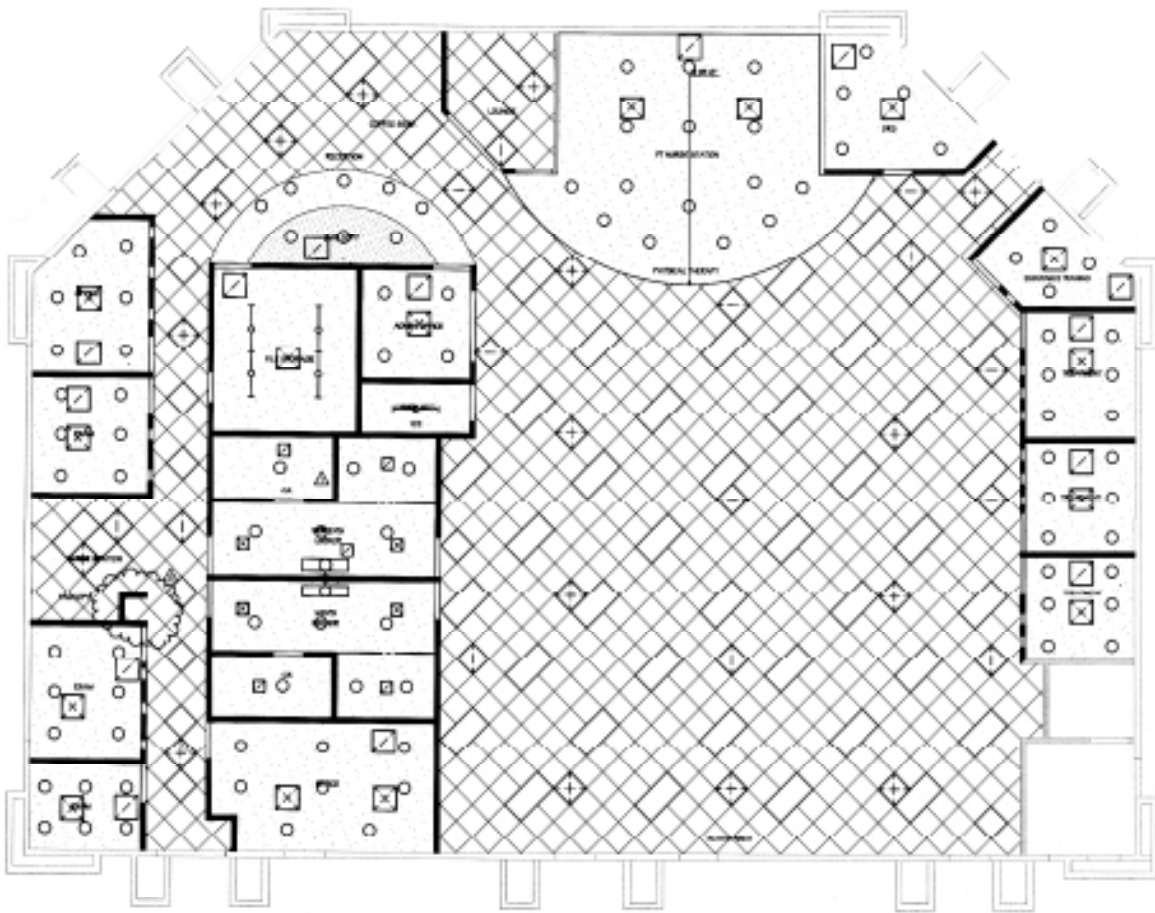
ZONED: C-O



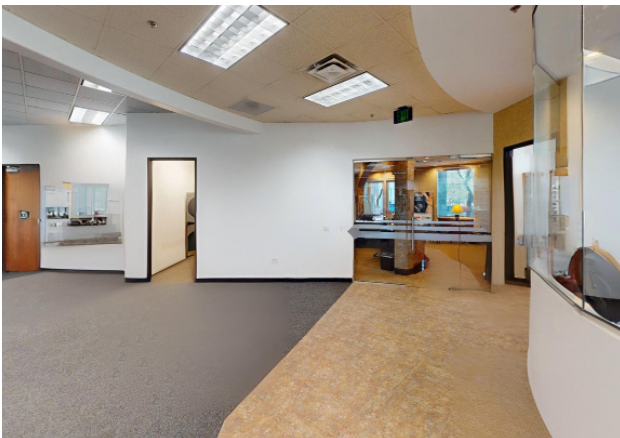
BUILT IN 2003



ACCESS IS RIGHT OF THE NORTH LOOP 101 AT SHEA BOULEVARD



FLOOR PLAN



PROPERTY PHOTOS



IRONWOOD OFFICE SUITES MAP



VIRGINIA G. PIPER
CANCER CENTER

0.4 MILES
2 MINUTES

THE PAIN
CENTER
5.8 MILES
10 MINUTES

HEALTHSOUTH
REHABILITATION
0.9 MILES
4 MINUTES

HONOR HEALTH

MAYO CLINIC

6 MILES
12 MINUTES

SITE

SCOTTSDALE FIESTA
SHOPPING CENTER
Fry's
BARNES & NOBLE
DSW
Marshall's
Pottery Barn Kids
OfficeMax
BUY BUY BABY
Pottery Barn Kids
FLOWER CHILD
Home Depot

Home Depot

Fry's
ANDREOLI

CHIJ

Bowlero

VIA LINDA BEHAVIORAL
HOSPITAL
2 MILES
7 MINUTES

Dutch Bros

IRONWOOD OFFICE SUITES 6,855 SF MEDICAL OFFICE FOR SALE

10245 N. 92nd St. | Scottsdale, AZ 85260



SHEILA BALE
Managing Director
+1 602 224 4454
sheila.bale@cushwake.com

ERIKA ECKBLAD
Director
+1 602 224 4451
erika.eckblad@cushwake.com

DREW SAMPSON
Director
+1 602 820 3877
drew.sampson@cushwake.com



2555 E. Camelback Rd., Suite 400
Phoenix, Arizona 85016

ph :+1 602 954 9000
fx: +1 602 253 0528

cushmanwakefield.com

©2026 Cushman & Wakefield. All rights reserved. The information contained in this communication is strictly confidential. This information has been obtained from sources believed to be reliable but has not been verified. NO WARRANTY OR REPRESENTATION, EXPRESS OR IMPLIED, IS MADE AS TO THE CONDITION OF THE PROPERTY (OR PROPERTIES) REFERENCED HEREIN OR AS TO THE ACCURACY OR COMPLETENESS OF THE INFORMATION CONTAINED HEREIN, AND SAME IS SUBMITTED SUBJECT TO ERRORS, OMISSIONS, CHANGE OF PRICE, RENTAL OR OTHER CONDITIONS, WITHDRAWAL WITHOUT NOTICE, AND TO ANY SPECIAL LISTING CONDITIONS IMPOSED BY THE PROPERTY OWNER(S). ANY PROJECTIONS, OPINIONS OR ESTIMATES ARE SUBJECT TO UNCERTAINTY AND DO NOT SIGNIFY CURRENT OR FUTURE PROPERTY PERFORMANCE. PD-66467-V1