



**IDEAL NORTHSORE MEDICAL OFFICE SUBLEASE**

# **NORTHSORE HIGHLAND PARK HOSPITAL CAMPUS**

767 PARK AVE. W  
HIGHLAND PARK, IL 60035

**AVAILABLE IMMEDIATELY**

**CBRE**

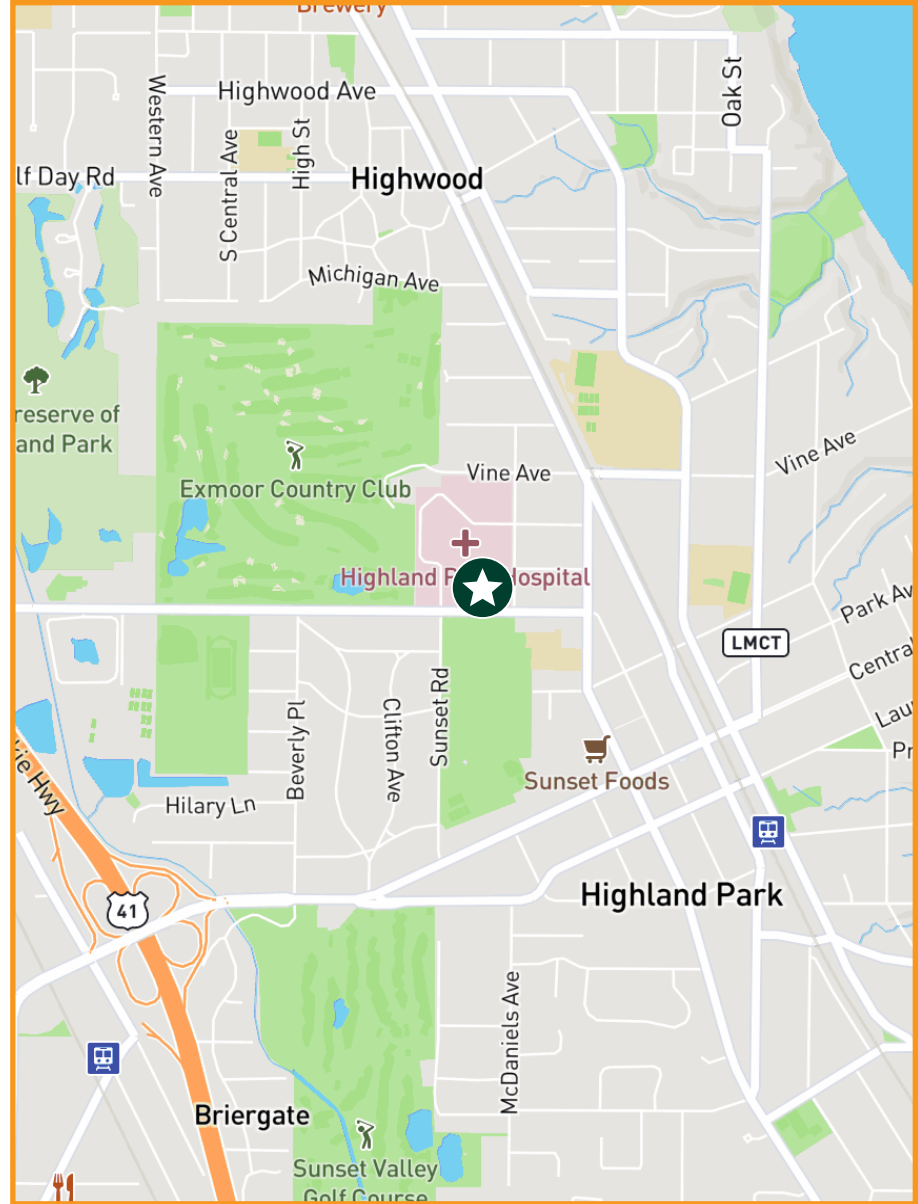
# 1ST FLOOR ACCESS

**SUITE 190**

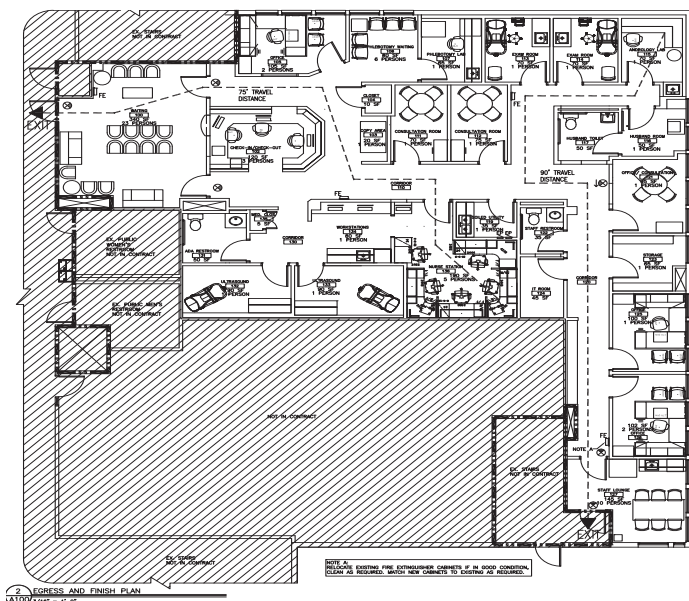
**SUBLEASE THROUGH  
12/31/26**

**3,433 SF**

**\$25.00 PSF GROSS**



- GREAT EXISTING CONDITIONS
- FURNITURE AND EQUIPMENT CAN STAY
- EFFICIENT LAYOUT
- OPTIMAL LOCATION FOR ALL HEALTH-CARE GROUPS LOOKING TO SERVICE THE NORTHSORE PATIENT POPULATION





## CONTACT US

**PATRICK ELWOOD**

Senior Vice President

+1 708 203 8970

[patrick.elwood@cbre.com](mailto:patrick.elwood@cbre.com)

**BRADY WOLFE**

Vice President

+1 815 541 6992

[brady.wolfe@cbre.com](mailto:brady.wolfe@cbre.com)



**CBRE**

CAPITALMARKETS|INVESTMENTPROPERTIES