

37840-37890 INTERCHANGE DRIVE FARMINGTON HILLS, MICHIGAN

HI-TECH FOR SALE OR LEASE

For Sale: 33,789 Square Feet

For Lease: 4,900 - 23,214 Square Feet



**SIGNATURE
ASSOCIATES**
KNOW SIGNATURE | KNOW RESULTS

HALSTED COMMERCE PARK



PROPERTY FEATURES

- Up to 23,214 square feet available for lease
 - Suite 37840: 4,900 square feet
 - Suite 37860: 8,082 square feet
 - Suite 37890: 15,132 square feet
 - Suites 37860 & 37890 can be combined for a total of 23,214 square feet
- 33,789 square foot building for sale
- 16' clear height
- 12'x14' over head doors
- (1) truckwell (in ground scissor lift)
- Zoned IRO, Industrial Research Office
- Large Generac generator
- Current configuration of office area can be reduced/reconfigured if required
- Great access to all area freeways
- Lease Rate: a market rate depending on amount of improvements, lease term, and credit of tenant



For more information, please contact:

JEFF LEMANSKI

(248) 359 0641

jlemanski@signatureassociates.com

CHRISTOPHER M. D'ANGELO

(248) 948 0109

cdangelo@signatureassociates.com

SIGNATURE ASSOCIATES

One Towne Square, Suite 1200

Southfield, MI 48076

www.signatureassociates.com

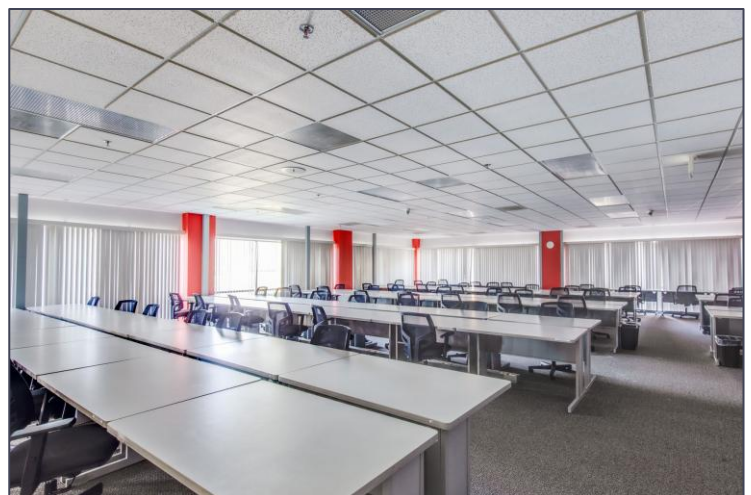
37840-37890 Interchange Dr. – Farmington Hills, Michigan

Hi-Tech For Sale or Lease

For Lease –
4,900 - 23,214 SF

For Sale –
33,789 SF

Additional Photos



For more information, please contact:

JEFF LEMANSKI

(248) 359 0641

jlemanski@signatureassociates.com

CHRISTOPHER M. D'ANGELO

(248) 948 0109

cdangelo@signatureassociates.com

SIGNATURE ASSOCIATES

One Towne Square, Suite 1200

Southfield, MI 48076

www.signatureassociates.com

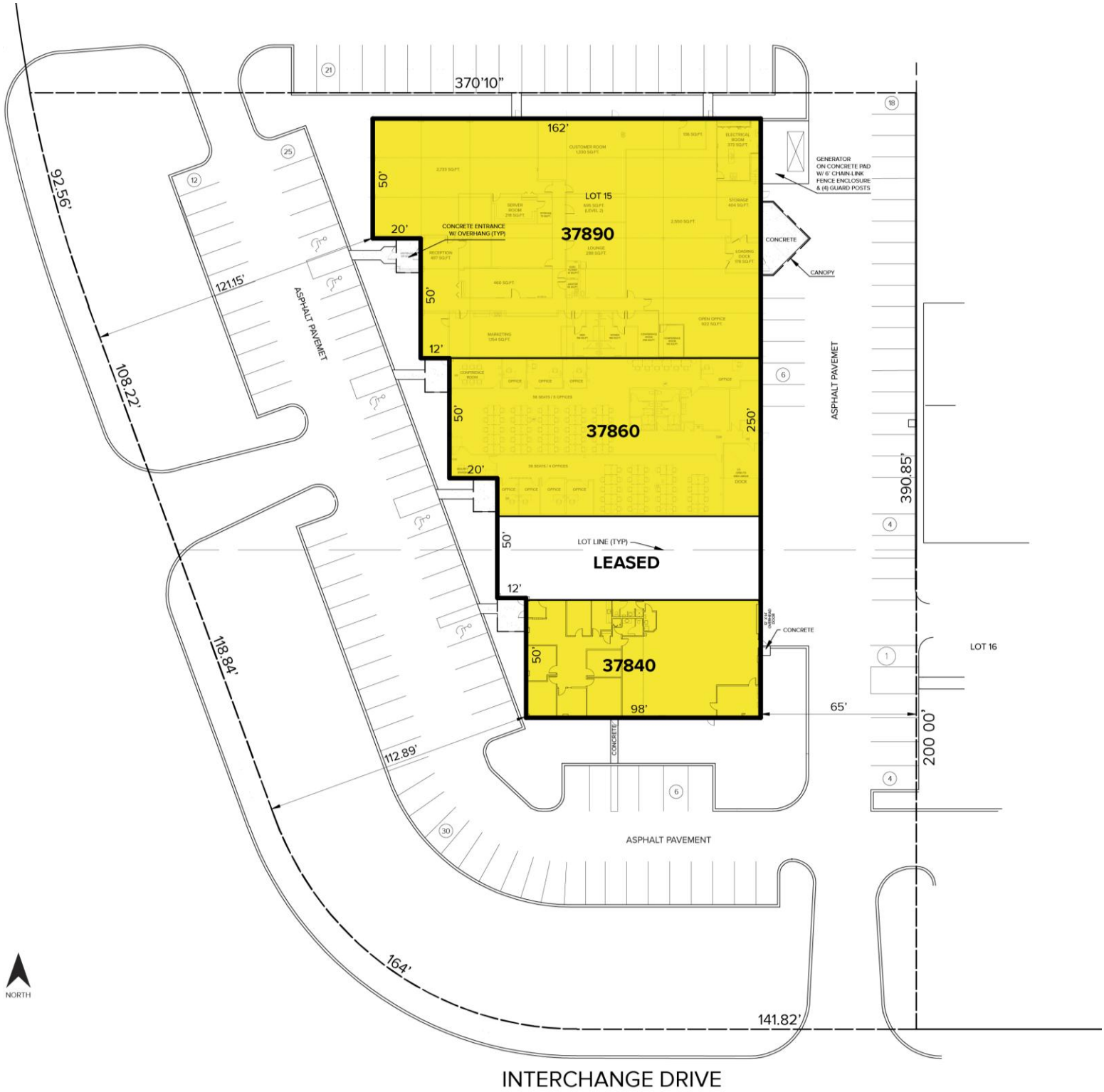
37840-37890 Interchange Dr. – Farmington Hills, Michigan

Hi-Tech For Sale or Lease

For Lease –
4,900 - 23,214 SF

For Sale –
33,789 SF

Site Plan



For more information, please contact:

JEFF LEMANSKI
(248) 359 0641
jlemanski@signatureassociates.com

CHRISTOPHER M. D'ANGELO
(248) 948 0109
cdangelo@signatureassociates.com

SIGNATURE ASSOCIATES
One Towne Square, Suite 1200
Southfield, MI 48076
www.signatureassociates.com

Information is subject to verification and no liability for errors or omissions is assumed. Price is subject to change and listing withdrawal.

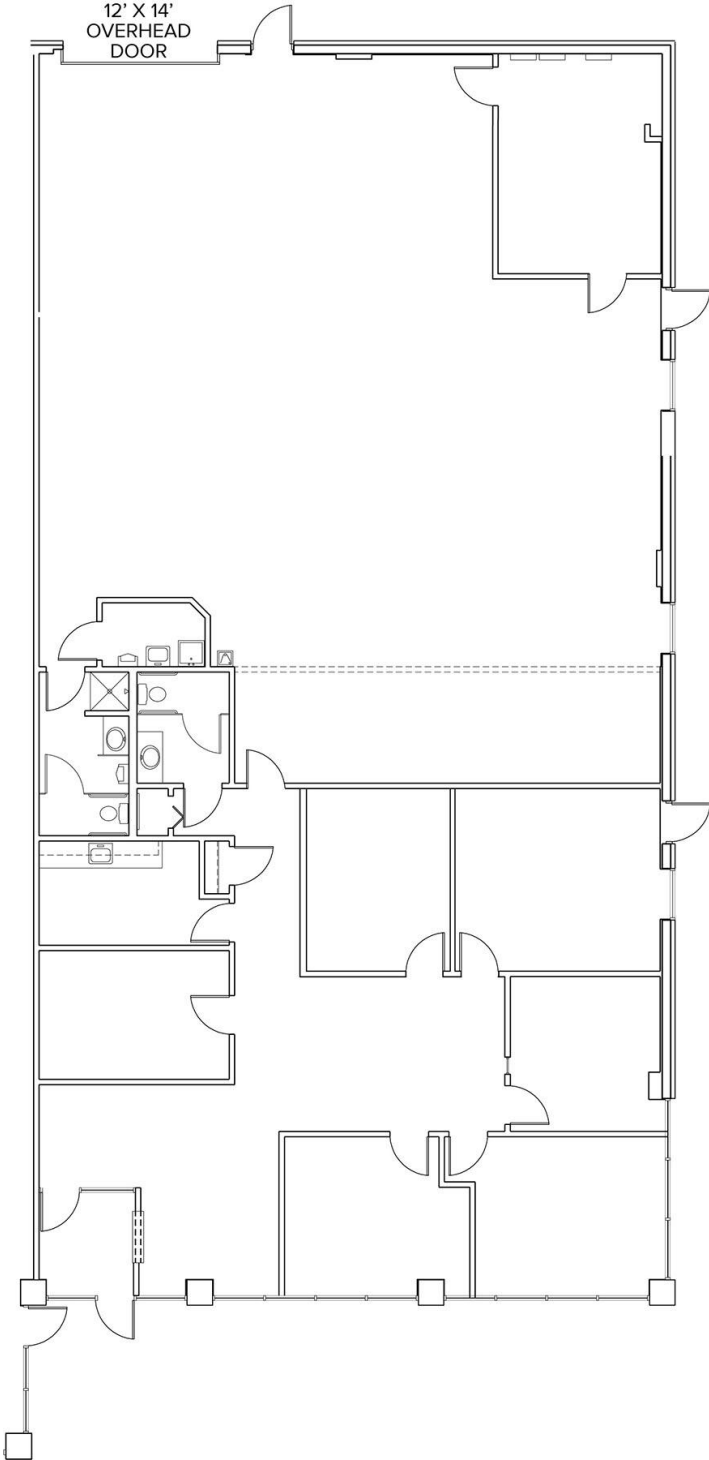
37840-37890 Interchange Dr. – Farmington Hills, Michigan

Hi-Tech For Sale or Lease

For Lease –
4,900 - 23,214 SF
For Sale –
33,789 SF

Floor Plan

SUITE 37840 – 4,900 SQ. FT.



For more information, please contact:

JEFF LEMANSKI
(248) 359 0641

jlemanski@signatureassociates.com

CHRISTOPHER M. D'ANGELO
(248) 948 0109

cdangelo@signatureassociates.com

SIGNATURE ASSOCIATES
One Towne Square, Suite 1200
Southfield, MI 48076
www.signatureassociates.com

Information is subject to verification and no liability for errors or omissions is assumed. Price is subject to change and listing withdrawal.

37840-37890 Interchange Dr. – Farmington Hills, Michigan

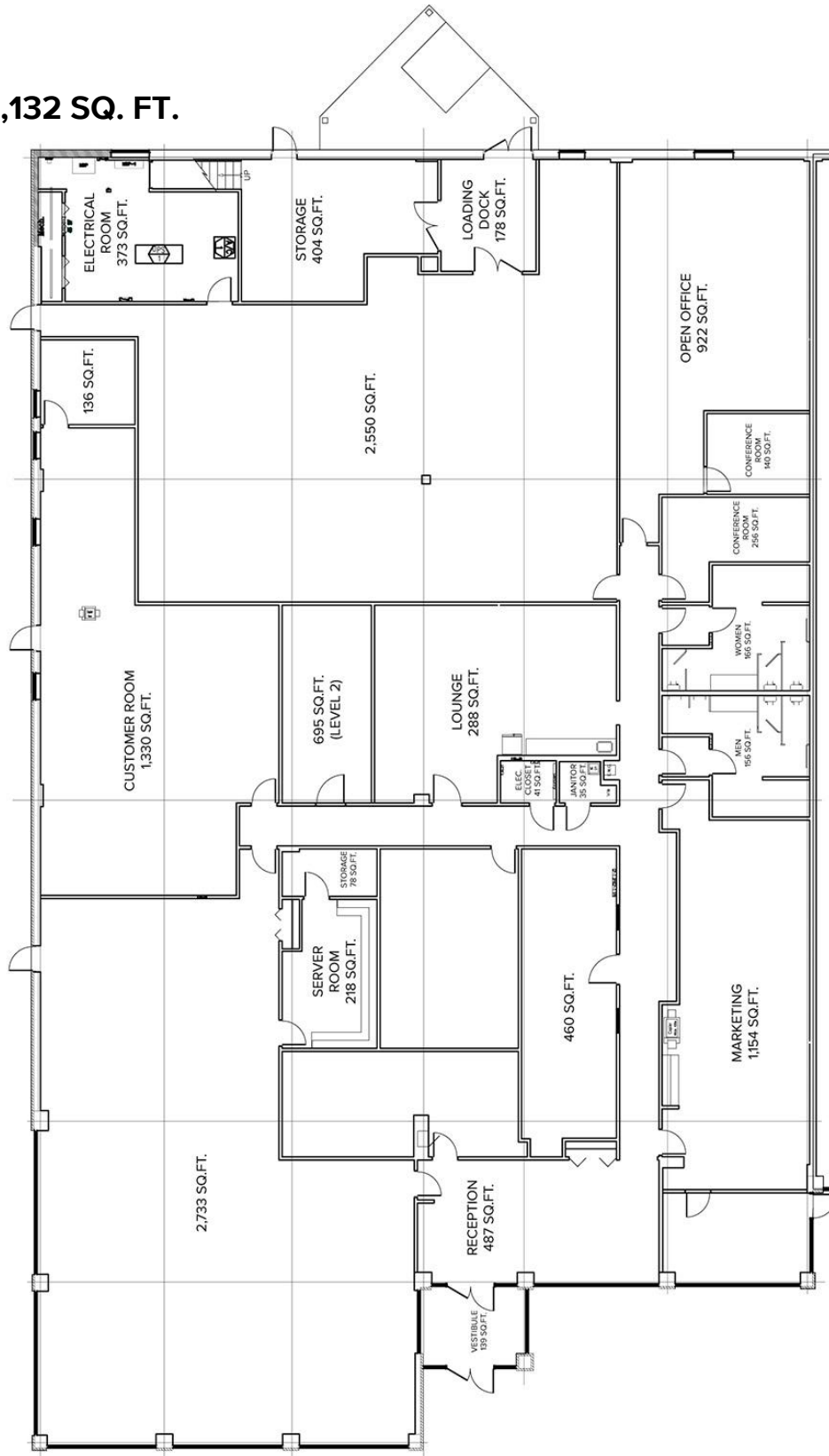
Hi-Tech For Sale or Lease

For Lease –
4,900 - 23,214 SF

For Sale –
33,789 SF

Floor Plan

SUITE 37890 -15,132 SQ. FT.



For more information, please contact:

JEFF LEMANSKI

(248) 359 0641

jlemanski@signatureassociates.com

CHRISTOPHER M. D'ANGELO

(248) 948 0109

cdangelo@signatureassociates.com

SIGNATURE ASSOCIATES

One Towne Square, Suite 1200

Southfield, MI 48076

www.signatureassociates.com

37840-37890 Interchange Dr. – Farmington Hills, Michigan

Hi-Tech For Sale or Lease

For Lease –
4,900 - 23,214 SF

For Sale –
33,789 SF

Aerial



For more information, please contact:

JEFF LEMANSKI

(248) 359 0641

jlemanski@signatureassociates.com

CHRISTOPHER M. D'ANGELO

(248) 948 0109

cdangelo@signatureassociates.com

SIGNATURE ASSOCIATES

One Towne Square, Suite 1200

Southfield, MI 48076

www.signatureassociates.com