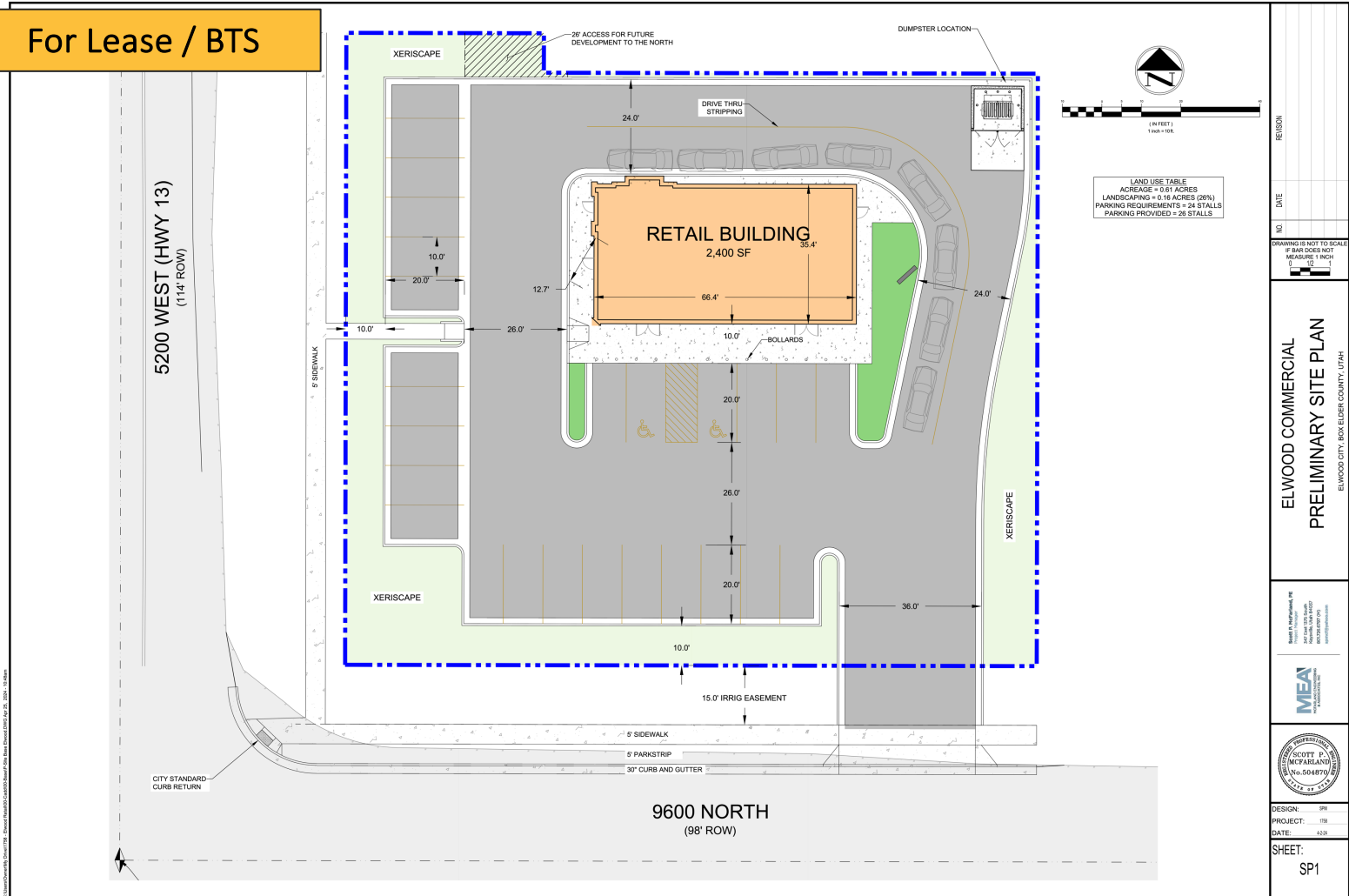


# HIGHWAY COMMERCIAL SITE AVAILABLE

5200 WEST 9610 NORTH ELWOOD, UT

For Lease / BTS



5200 West 9610 North  
 Elwood, UT 84337

### Property information

- Land area: 0.61 Acres
- Parcel #: 05-193-0016
- Building Size: 2,400 SF - Divisible
- Zoning: Commercial
- Drive thru
- I-15 Exit 376

DEMOGRAPHICS	3 Mile	5 Miles	10 Miles
<b>2023 Population</b>			
Total Population	11,115	19,190	29,080
Total Households	3,517	6,049	9,095
Median HH Income	\$57,418	\$59,958	\$65,619
<b>Employment</b>			
Total # Employees	1,963	5,065	7,201
Total # Businesses	267	469	600
<b>Traffic</b>			
Interstate 15		25,062 ADT	

\*Demographics provided by Costar

### Marketed by:

Jake Nichols 385.227.3420 [jake@dncre.com](mailto:jake@dncre.com)  
 Joseph Nichols 801.403.9987 [joseph@dncre.com](mailto:joseph@dncre.com)  
 Dell Nichols, CCIM 801.502.9543 [dell@dncre.com](mailto:dell@dncre.com)  
[www.dncre.com](http://www.dncre.com) ph: 801.797.9900



©2020, Dell Nichols Commercial Real Estate LLC. Disclaimer: The above information is given with the obligation that all negotiations relating to the purchase, renting, or leasing of the property described above shall be conducted through Dell Nichols Commercial Real Estate LLC. No warranty or representation, express or implied, is made as to the accuracy of the information contained herein, and same is submitted subject to errors, omissions, change of price, rental or other encumbrances, withdrawal without notice, and to any special listing conditions imposed by the seller. Prospective buyers should conduct their own due diligence.

# HIGHWAY COMMERCIAL SITE AVAILABLE

5200 WEST 9610 NORTH ELWOOD, UT



## Marketed by:

Jake Nichols 385.227.3420 [jake@dncre.com](mailto:jake@dncre.com)  
Joseph Nichols 801.403.9987 [joseph@dncre.com](mailto:joseph@dncre.com)  
Dell Nichols, CCIM 801.502.9543 [dell@dncre.com](mailto:dell@dncre.com)  
[www.dncre.com](http://www.dncre.com) ph: 801.797.9900



**Dell Nichols**  
Commercial Real Estate LLC

©2020, Dell Nichols Commercial Real Estate LLC. Disclaimer: The above information is given with the obligation that all negotiations relating to the purchase, renting, or leasing of the property described above shall be conducted through Dell Nichols Commercial Real Estate LLC. No warranty or representation, express or implied, is made as to the accuracy of the information contained herein, and same is submitted subject to errors, omissions, change of price, rental or other encumbrances, withdrawal without notice, and to any special listing conditions imposed by the seller. Prospective buyers should conduct their own due diligence.