



OFFICE SPACES FOR LEASE

820-858 N. HILLVIEW DRIVE
MILPITAS, CA 95035



- **Suite 826**
 - 1,652 RSF
 - \$2.00/SF/MO
- **Suite 840**
 - 2,292 RSF
 - \$2.00/SF/MO
- **Suite 848**
 - 2,214 RSF
 - \$2.00/SF/MO
- **Suite 850**
 - 2,147 RSF
 - \$2.00/SF/MO

Tyrus Cobb, Director

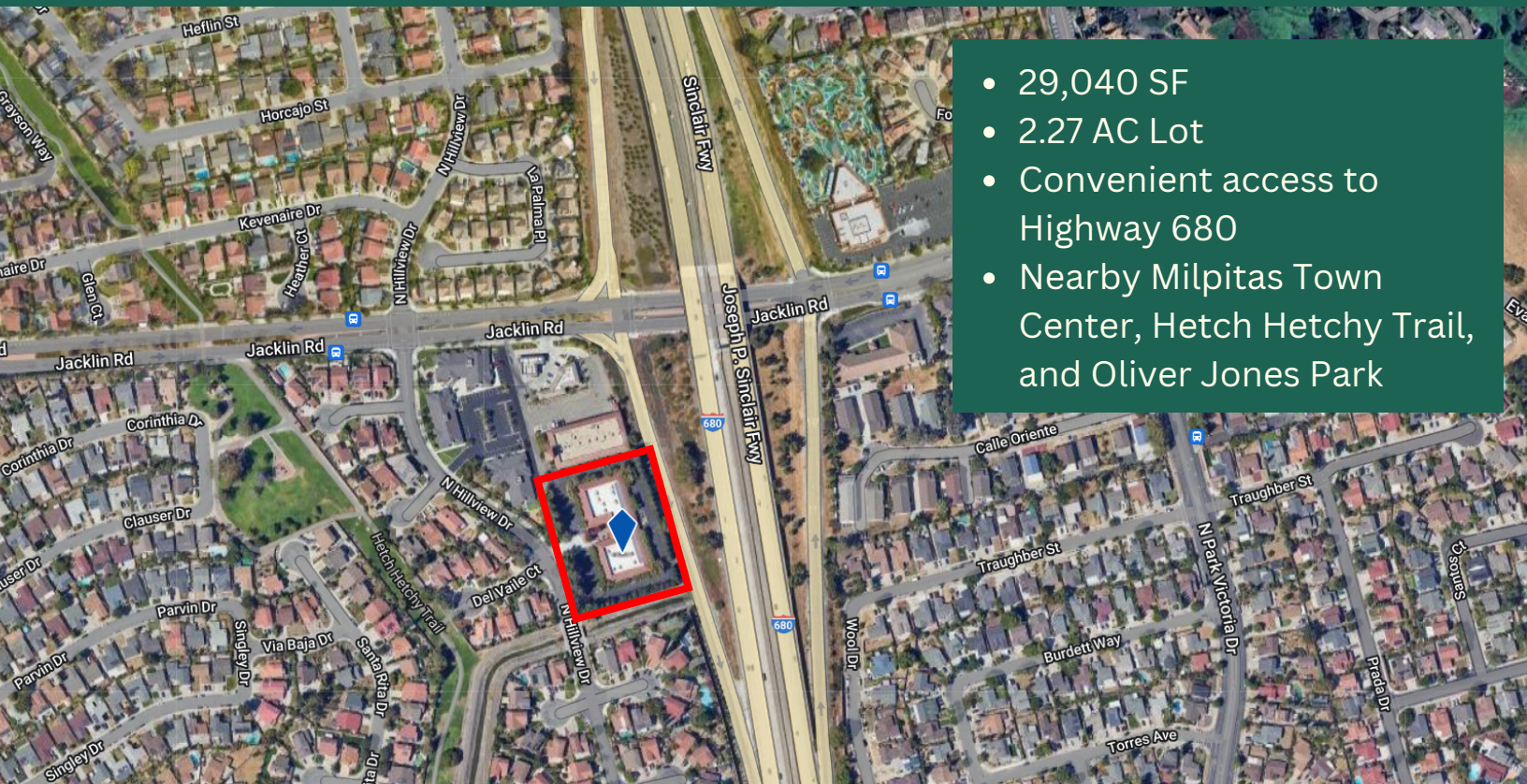
650.313.7909

tyrus@wilburproperties.com

DRE # 02016254

820-858 N. Hillview Drive

Milpitas, CA 95035



- 29,040 SF
- 2.27 AC Lot
- Convenient access to Highway 680
- Nearby Milpitas Town Center, Hetch Hetchy Trail, and Oliver Jones Park

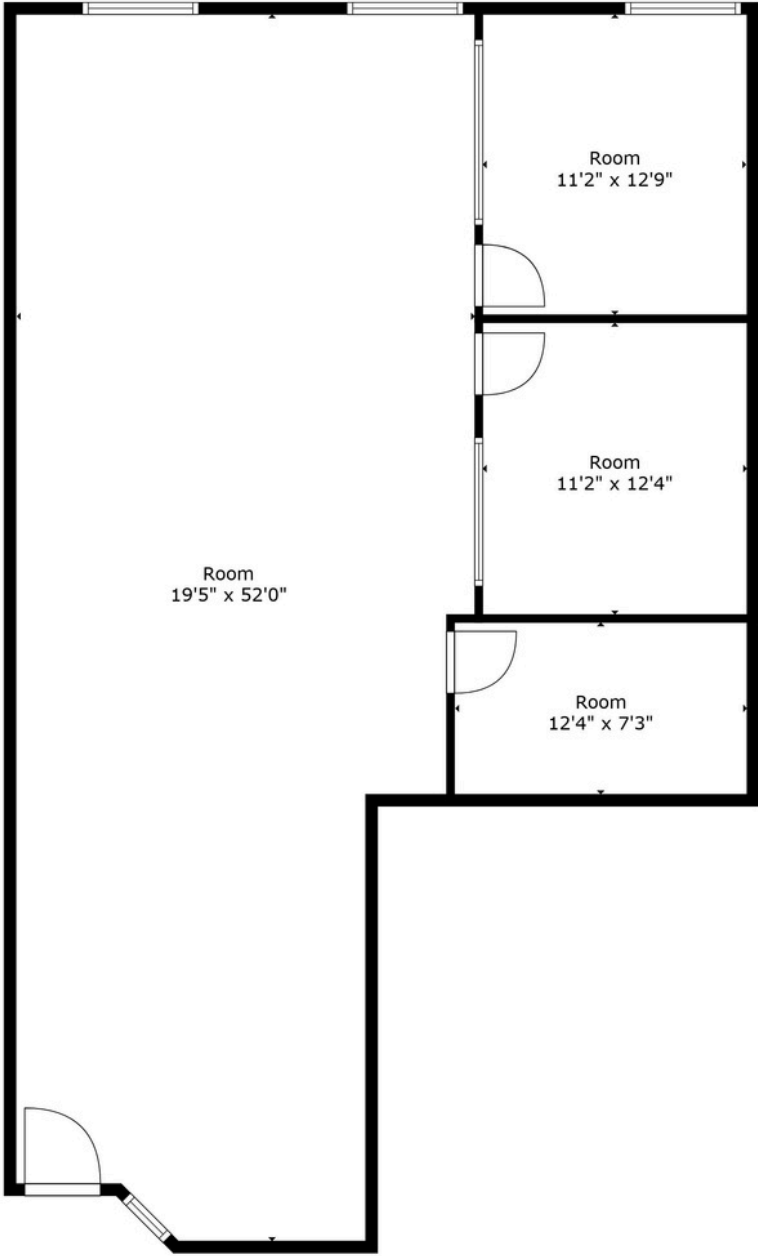


The information contained herein is from sources we deem reliable. It is provided without any guarantee, expressed to its accuracy. The information supplied herein is subject to change. Final rent rates and terms are contingent upon review of tenant financial statements.

820-858 N. Hillview Drive

Milpitas, CA 95035

Suite 826

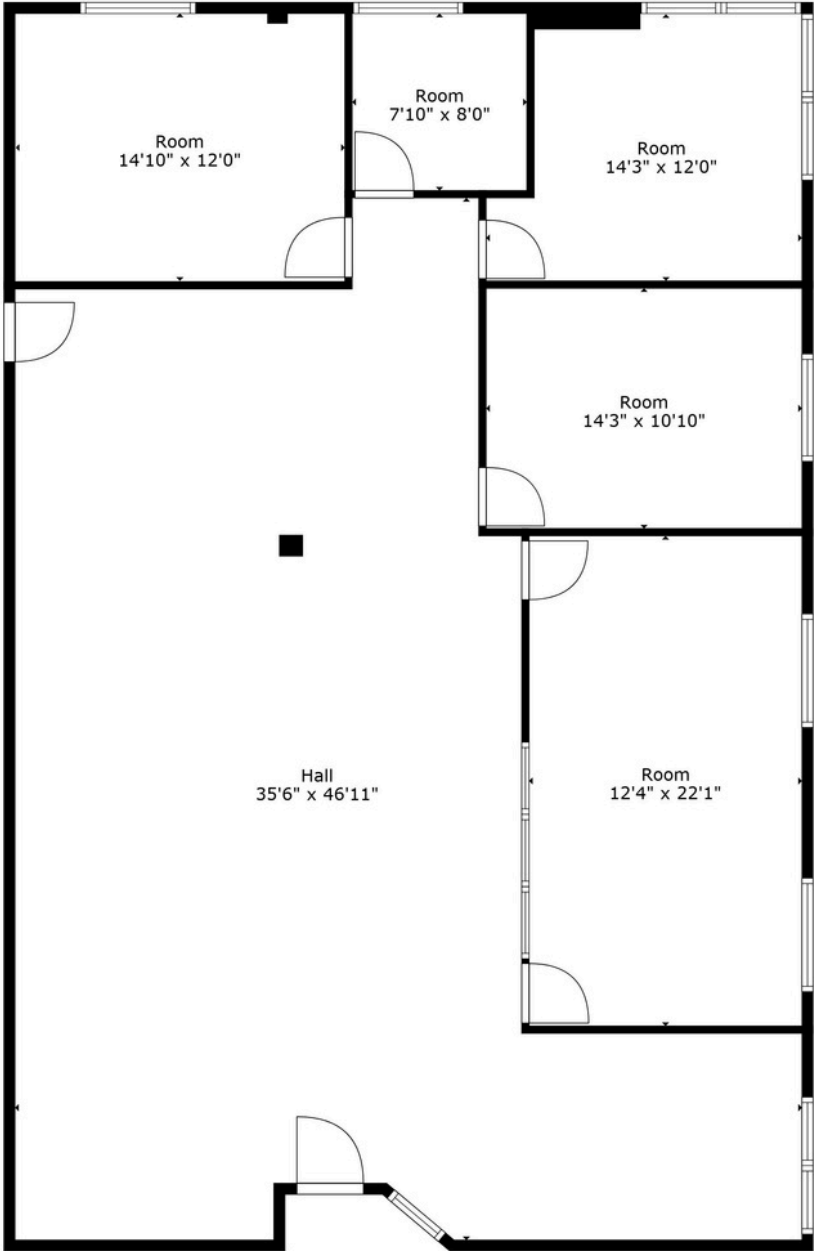


The information contained herein is from sources we deem reliable. It is provided without any guarantee, expressed to its accuracy. The information supplied herein is subject to change. Final rent rates and terms are contingent upon review of tenant financial statements.

820-858 N. Hillview Drive

Milpitas, CA 95035

Suite 840

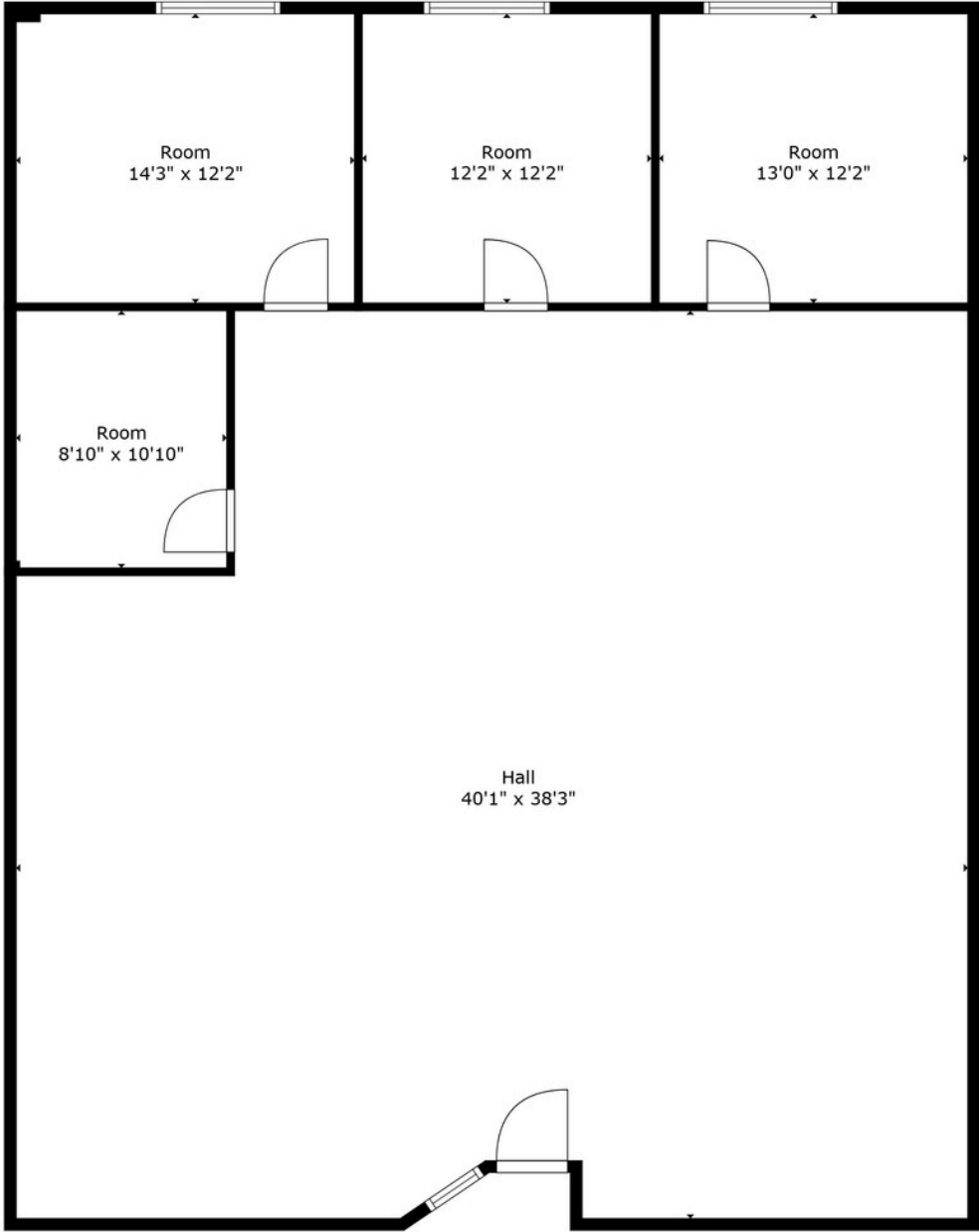


The information contained herein is from sources we deem reliable. It is provided without any guarantee, expressed to its accuracy. The information supplied herein is subject to change. Final rent rates and terms are contingent upon review of tenant financial statements.

820-858 N. Hillview Drive

Milpitas, CA 95035

Suite 850



The information contained herein is from sources we deem reliable. It is provided without any guarantee, expressed to its accuracy. The information supplied herein is subject to change. Final rent rates and terms are contingent upon review of tenant financial statements.