



1175 Clearmont School Road

Burnsville, North Carolina 28714

Property Highlights

- well & septic installed
- Open Use zoning
- 7 miles from Burnsville and 40 miles from Asheville

Property Overview

The historic Clearmont School is for sale; +/- 19,000 SF building is located in the Flood Plain; +/- 8 acres of the property are located outside the Flood Plain; No zoning; Cafeteria, Gymnasium, Classrooms; This vacant property is suitable for redevelopment to single family homes, specialty schools, retreat center, learning center, tiny home community, camping venue, brewery, music venue, artist studios, etc. Any offer to purchase must comply with an upset bid process per N.C. General Statute.

Offering Summary

Sale Price:	\$450,000
Building Size:	19,044 SF
PIN #s	082200463395000 & 082200452957000
Lot Size:	2 parcels totalling 11.46 Acres

Demographics 5 Miles 10 Miles 30 Miles

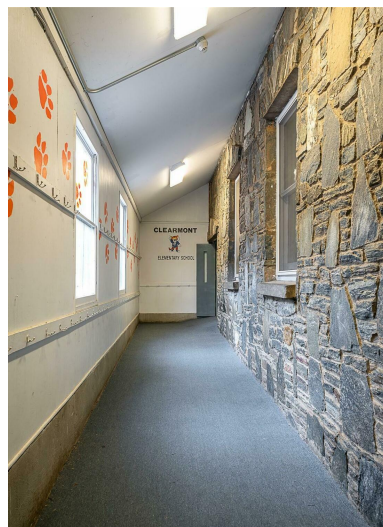
	5 Miles	10 Miles	30 Miles
Total Households	3,518	10,979	211,152
Total Population	6,356	17,699	409,025
Average HH Income	\$46,981	\$40,745	\$53,970

For More Information

John Webb

O: 828 215 2042

jwebb@naibevery-hanks.com | NC #298590



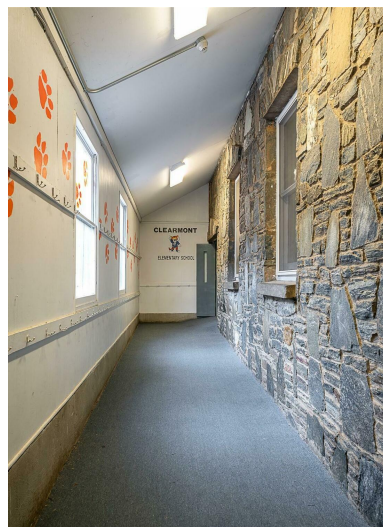
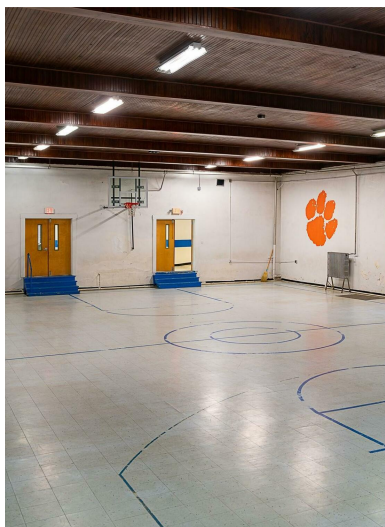
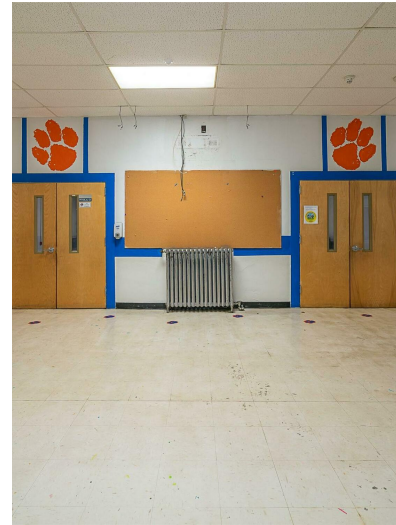
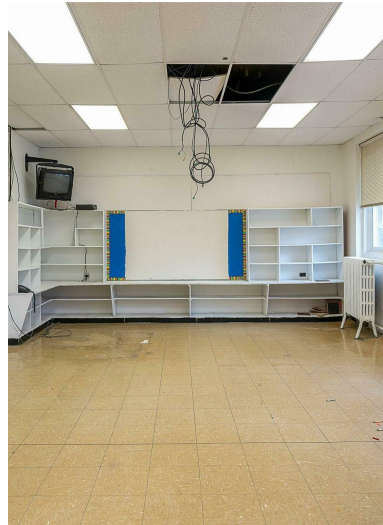
We obtained the information above from sources we believe to be reliable. However, we have not verified its accuracy and make no guarantee, warranty or representation about it. It is submitted subject to the possibility of errors, omissions, change of price, rental or other conditions, prior sale, lease or financing, or withdrawal without notice. We include projections, opinions, assumptions or estimates for example only, and they may not represent current or future performance of the property. You and your tax and legal advisors should conduct your own investigation of the property and transaction.

410 Executive Park
Asheville, NC 28801
828 210 3940 tel
naibevery-hanks.com

For Sale

19,044 SF | \$450,000

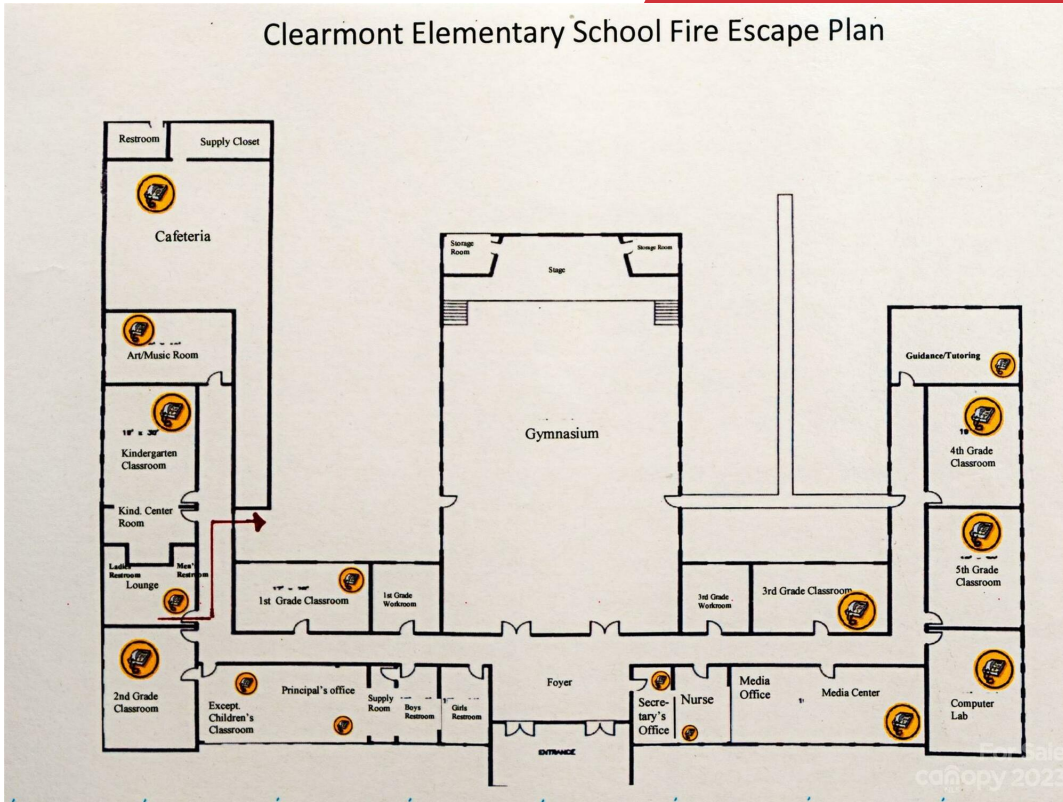
Special Purpose Space



We obtained the information above from sources we believe to be reliable. However, we have not verified its accuracy and make no guarantee, warranty or representation about it. It is submitted subject to the possibility of errors, omissions, change of price, rental or other conditions, prior sale, lease or financing, or withdrawal without notice. We include projections, opinions, assumptions or estimates for example only, and they may not represent current or future performance of the property. You and your tax and legal advisors should conduct your own investigation of the property and transaction.

410 Executive Park
Asheville, NC 28801
828 210 3940 tel
naibeverly-hanks.com

Clearmont Elementary School Fire Escape Plan

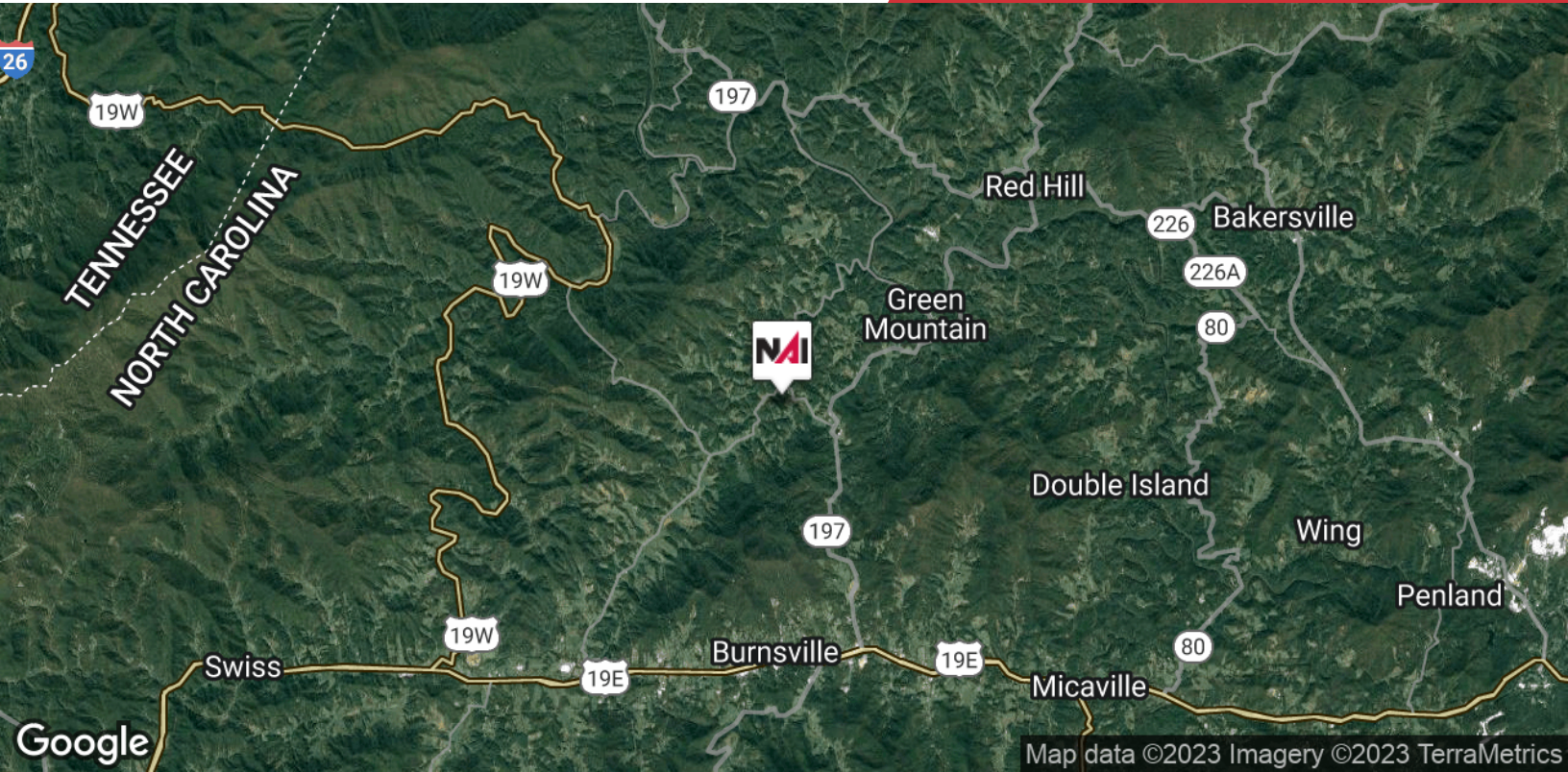


We obtained the information above from sources we believe to be reliable. However, we have not verified its accuracy and make no guarantee, warranty or representation about it. It is submitted subject to the possibility of errors, omissions, change of price, rental or other conditions, prior sale, lease or financing, or withdrawal without notice. We include projections, opinions, assumptions or estimates for example only, and they may not represent current or future performance of the property. You and your tax and legal advisors should conduct your own investigation of the property and transaction.

For Sale

19,044 SF | \$450,000

Special Purpose Space



We obtained the information above from sources we believe to be reliable. However, we have not verified its accuracy and make no guarantee, warranty or representation about it. It is submitted subject to the possibility of errors, omissions, change of price, rental or other conditions, prior sale, lease or financing, or withdrawal without notice. We include projections, opinions, assumptions or estimates for example only, and they may not represent current or future performance of the property. You and your tax and legal advisors should conduct your own investigation of the property and transaction.

410 Executive Park
Asheville, NC 28801
828 210 3940 tel
naibeverly-hanks.com