

**FULL BUILDING AVAILABLE | 55,388 SF
DIVISIBLE TO 11,531 SF**

RESEARCH PARK 3

12515 RESEARCH BLVD., BLDG 3, AUSTIN, TX 78759



FOR MORE INFORMATION, CONTACT:

KEVIN GRANGER

Executive Managing Director
+1 512 814 3403
kevin.granger@cushwake.com

MATT FRIZZELL

Executive Director
+1 512 814 3404
matt.frizzell@cushwake.com

BRIAN LIVERMAN

Executive Director
+1 512 814 3402
brian.liverman@cushwake.com



THE
RMR
GROUP

PROPERTY FEATURES



55,388 SF
SQUARE FOOTAGE

3.2:1000
PARKING



USE

CAN ACCOMMODATE FLEX, OFFICE, AND R&D USES



STRUCTURAL

CONCRETE TILT-UP WALL PANELS WITH ACCENT REVEALS AND TEXTURED ACRYLIC COATING. 1 ROLLUP DOCK LEVEL DOOR WITH POTENTIAL TO ADD ADDITIONAL DOORS. TPO ROOF INSTALLED IN 2015.



WINDOW GLAZING

ANODIZED ALUMINUM FRAMED WINDOWS WITH REFLECTIVE GLASS COATING.



HVAC

52 PACKAGE RTU'S. PHASED REPLACEMENT BEGINNING IN 2024.



ELECTRIC AND FIRE PROTECTION

480/277 3-PHASE. SILENT KNIGHT FIRE PROTECTION SPRINKLER SYSTEM.



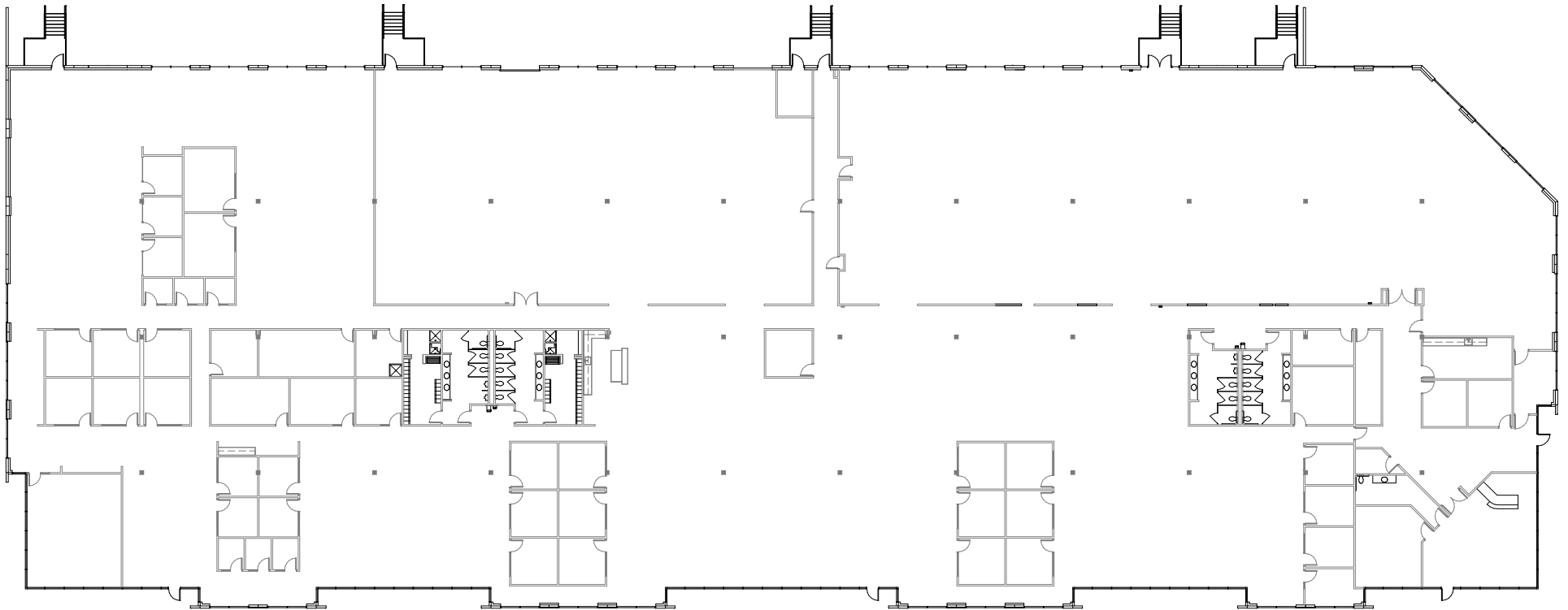
FLOOR PLAN

RESEARCH PARK 3

12515 RESEARCH BLVD, BLDG 3, AUSTIN, TX 78759

55,388 SF

Square footage is subject to remeasurement.



FOR MORE INFORMATION, CONTACT:

KEVIN GRANGER

Executive Managing Director
+1 512 814 3403
kevin.granger@cushwake.com

MATT FRIZZELL

Executive Director
+1 512 814 3404
matt.frizzell@cushwake.com

BRIAN LIVERMAN

Executive Director
+1 512 814 3402
brian.liverman@cushwake.com



THE
RMR
GROUP

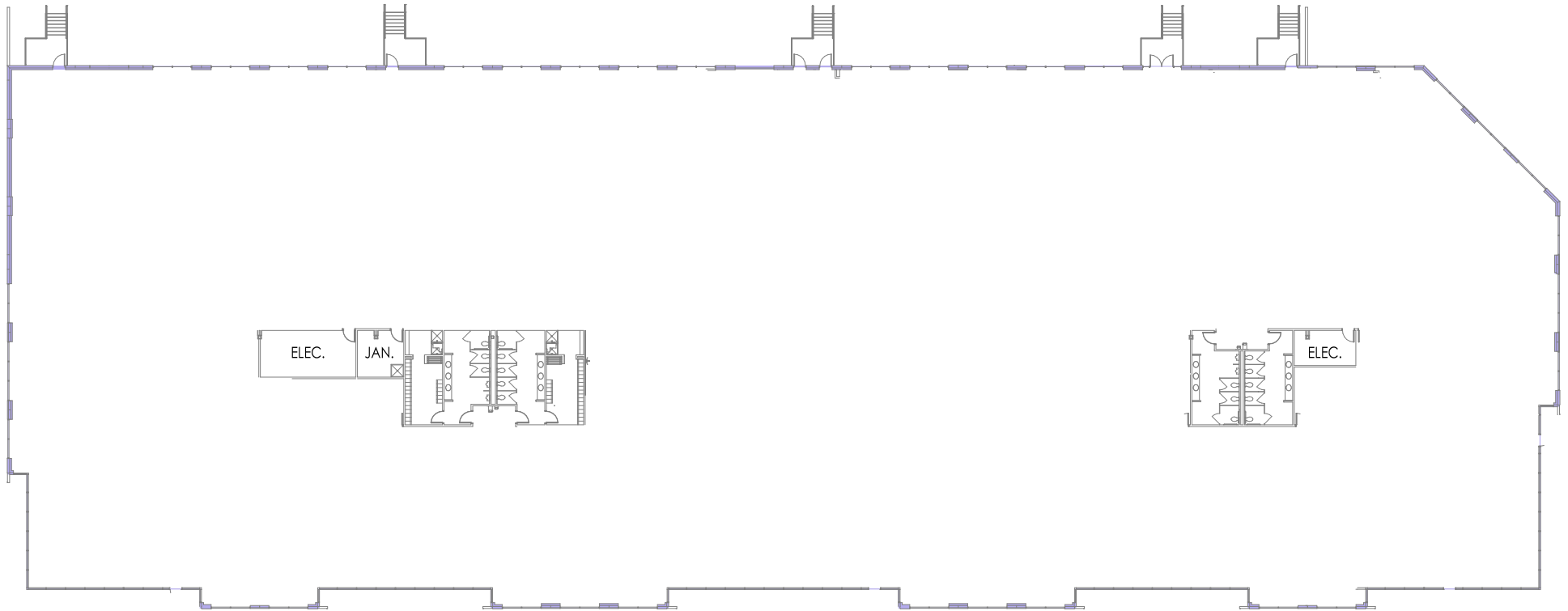
FLOOR PLAN

RESEARCH PARK 3

12515 RESEARCH BLVD, BLDG 3, AUSTIN, TX 78759

55,388 SF

Shell layout



FOR MORE INFORMATION, CONTACT:

KEVIN GRANGER

Executive Managing Director
+1 512 814 3403
kevin.granger@cushwake.com

MATT FRIZZELL

Executive Director
+1 512 814 3404
matt.frizzell@cushwake.com

BRIAN LIVERMAN

Executive Director
+1 512 814 3402
brian.liverman@cushwake.com



THE
RMR
GROUP

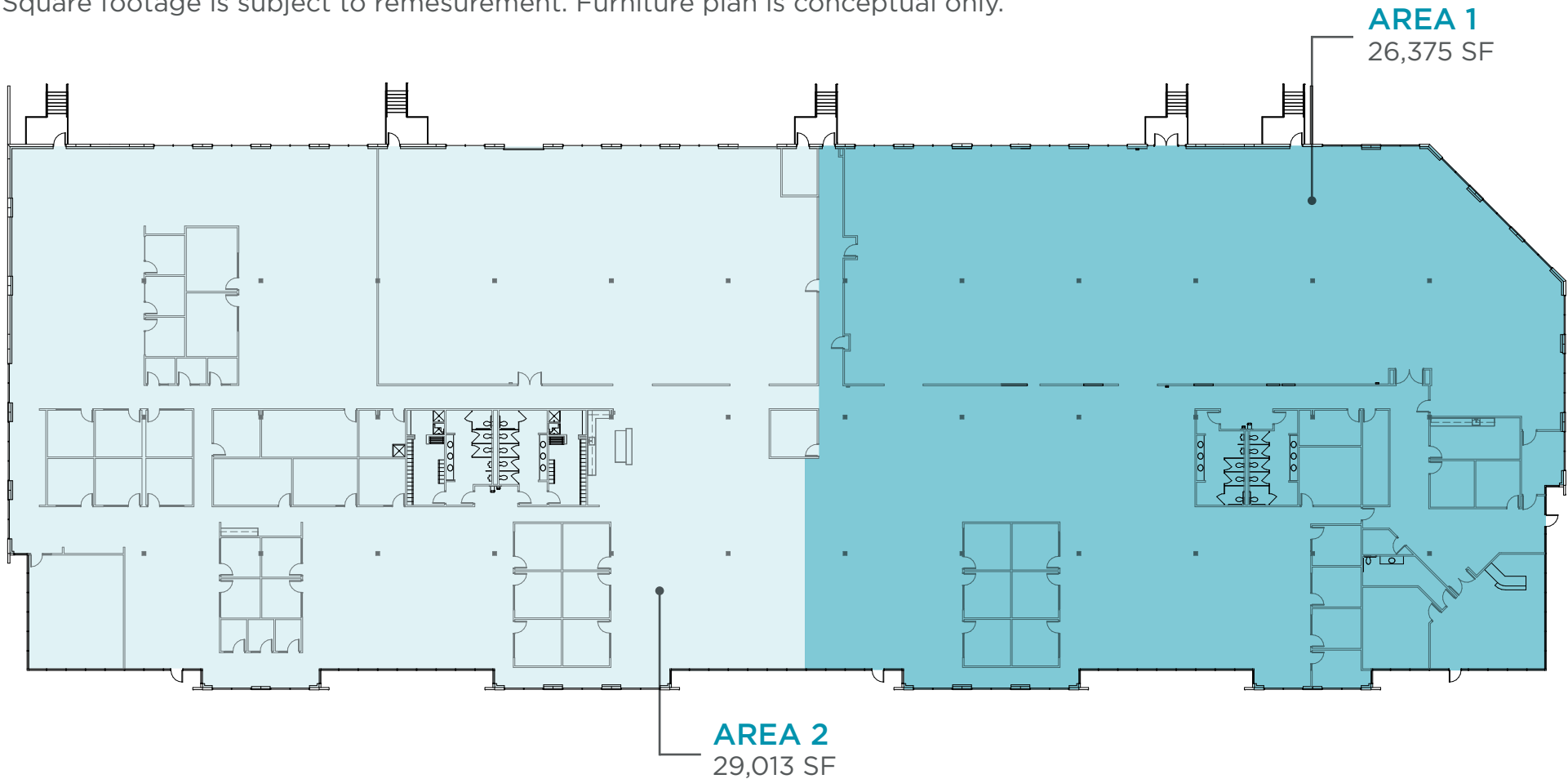
FLOOR PLAN

RESEARCH PARK 3

12515 RESEARCH BLVD, BLDG 3, AUSTIN, TX 78759

DEMISING OPTION #1

Square footage is subject to remeasurement. Furniture plan is conceptual only.



FOR MORE INFORMATION, CONTACT:

KEVIN GRANGER

Executive Managing Director
+1 512 814 3403
kevin.granger@cushwake.com

MATT FRIZZELL

Executive Director
+1 512 814 3404
matt.frizzell@cushwake.com

BRIAN LIVERMAN

Executive Director
+1 512 814 3402
brian.liverman@cushwake.com



THE
RMR
GROUP

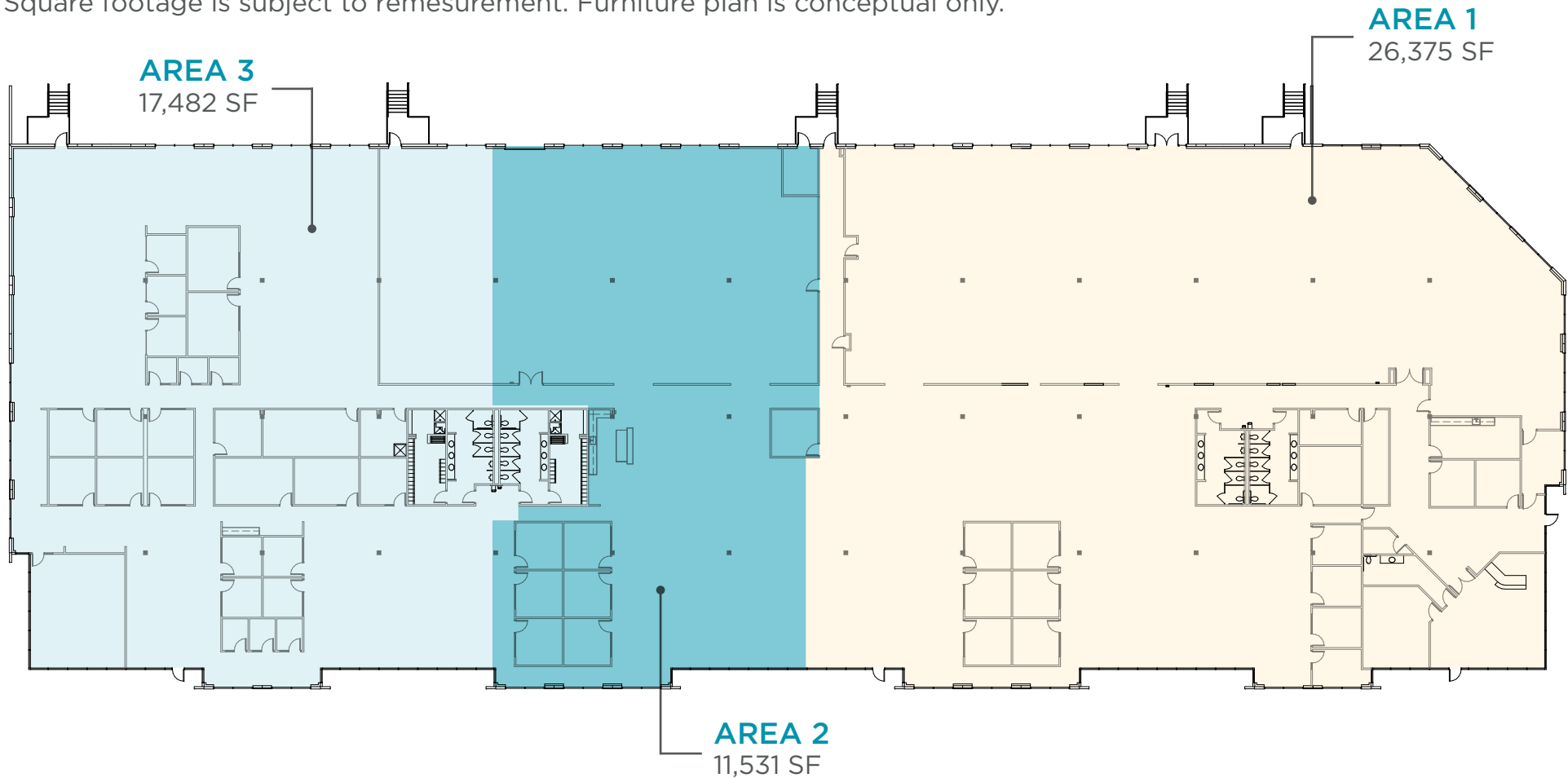
FLOOR PLAN

RESEARCH PARK 3

12515 RESEARCH BLVD, BLDG 3, AUSTIN, TX 78759

DEMISING OPTION #2

Square footage is subject to remeasurement. Furniture plan is conceptual only.



FOR MORE INFORMATION, CONTACT:

KEVIN GRANGER

Executive Managing Director
+1 512 814 3403
kevin.granger@cushwake.com

MATT FRIZZELL

Executive Director
+1 512 814 3404
matt.frizzell@cushwake.com

BRIAN LIVERMAN

Executive Director
+1 512 814 3402
brian.liverman@cushwake.com

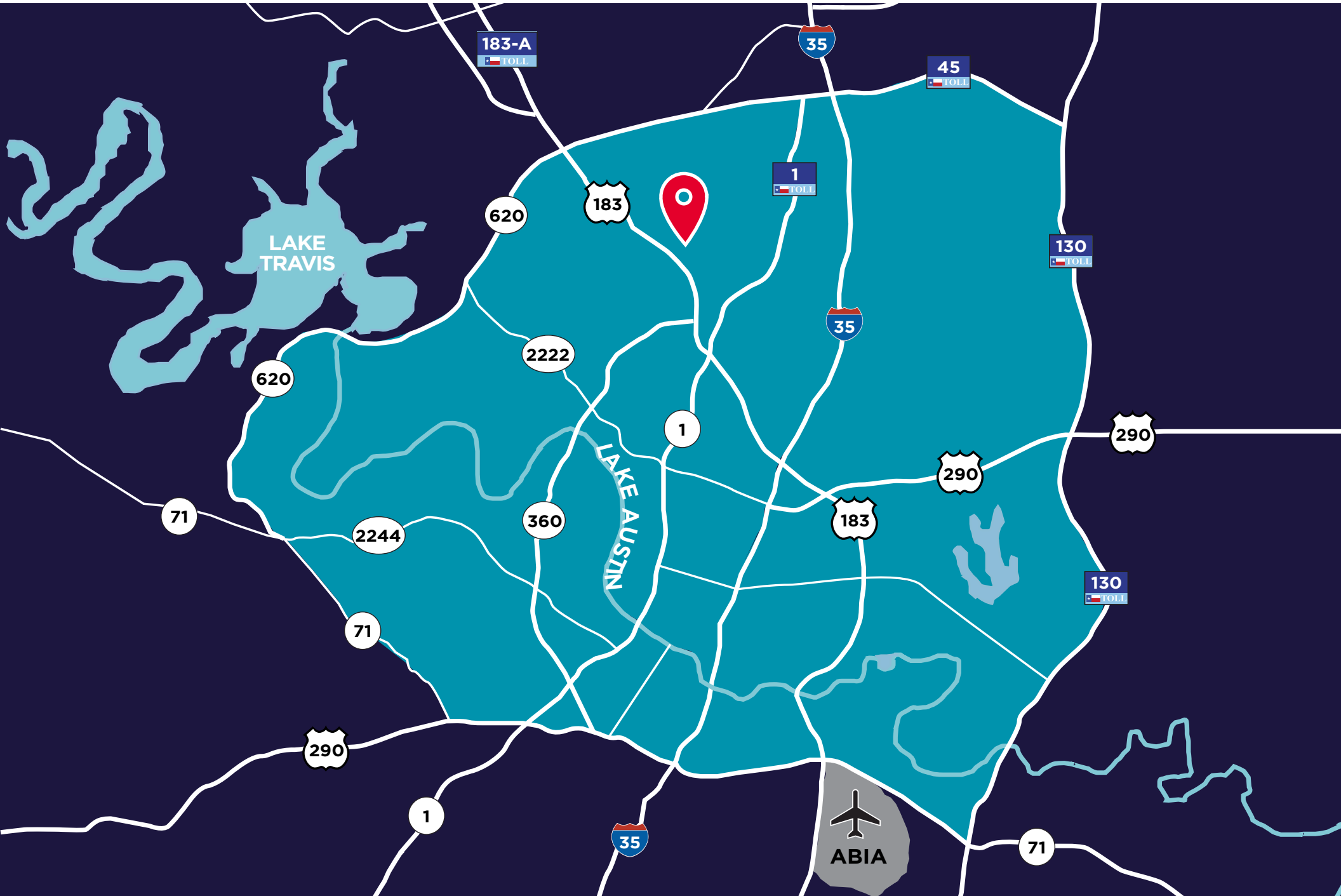


THE
RMR
GROUP

SITE LOCATION

RESEARCH PARK 3

12515 RESEARCH BLVD, BLDG 3, AUSTIN, TX 78759



AMENITIES MAP

RESEARCH PARK 3

12515 RESEARCH BLVD, BLDG 3, AUSTIN, TX 78759



RETAIL

- | | |
|---------------|--------------|
| 1. Shell | 4. Walgreens |
| 2. Academy | 5. 7/11 |
| 3. Chase Bank | 6. H-E-B |



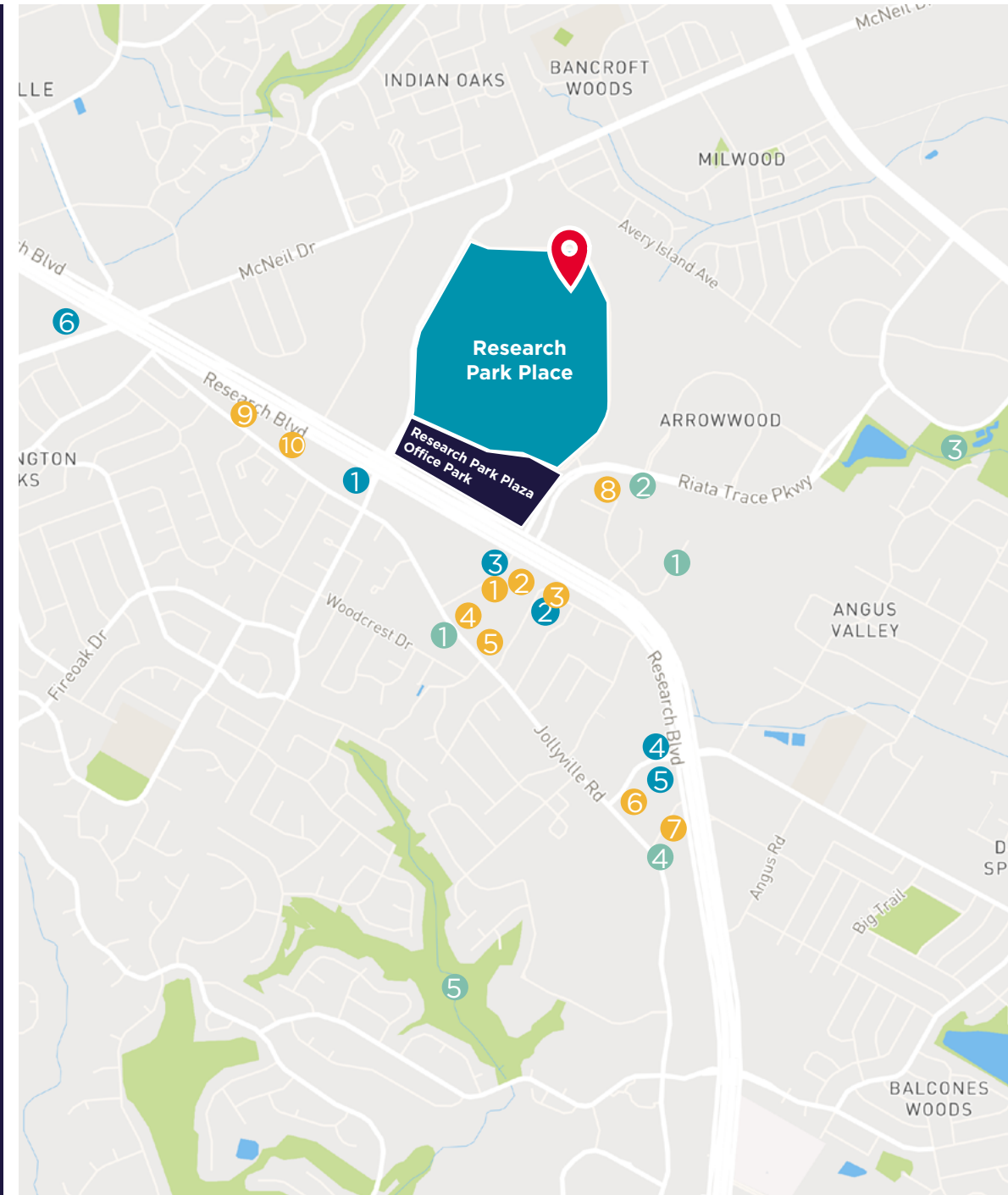
RESTAURANTS

- | | |
|----------------------------|-----------------------|
| 1. Dunkin' | 6. Chuy's |
| 2. OneTaco | 7. Outback Steakhouse |
| 3. P. Terry's Burger Stand | 8. Cafe Eden |
| 4. Sonic | 9. Dimassi's |
| 5. Pour House | 10. Krispy Kreme |



OTHER

- | | |
|---------------------------------|--------------------------------------|
| 1. Extended Stay | 4. Tru By Hilton Austin NW Arboretum |
| 2. Yoga | 5. Great Hills Neighborhood Park |
| 3. Yett Creek Neighborhood Park | |



FOR MORE INFORMATION, CONTACT:

KEVIN GRANGER

Executive Managing Director
+1 512 814 3403
kevin.granger@cushwake.com

MATT FRIZZELL

Executive Director
+1 512 814 3404
matt.frizzell@cushwake.com

BRIAN LIVERMAN

Executive Director
+1 512 814 3402
brian.liverman@cushwake.com