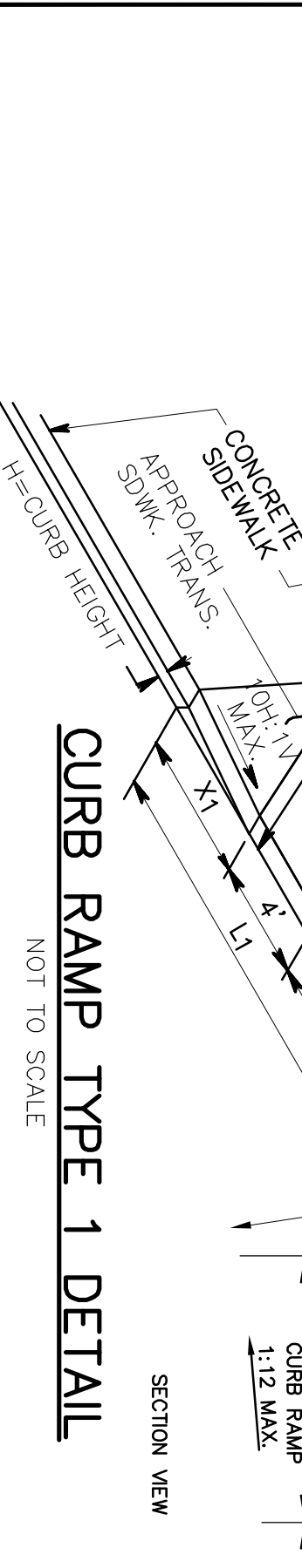


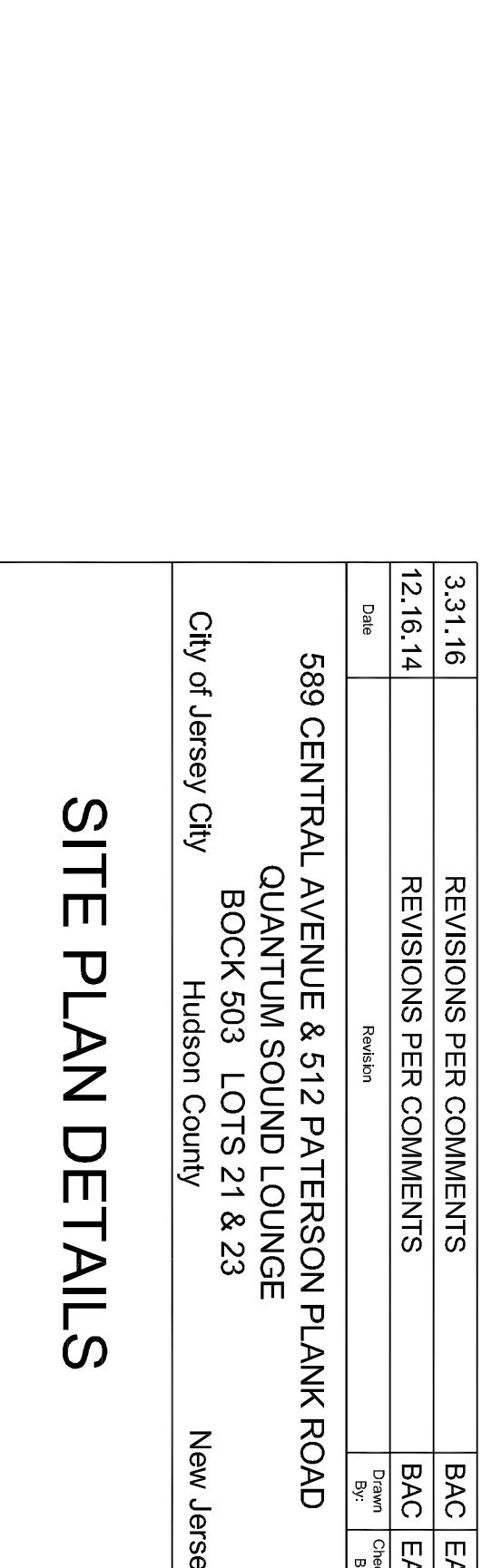
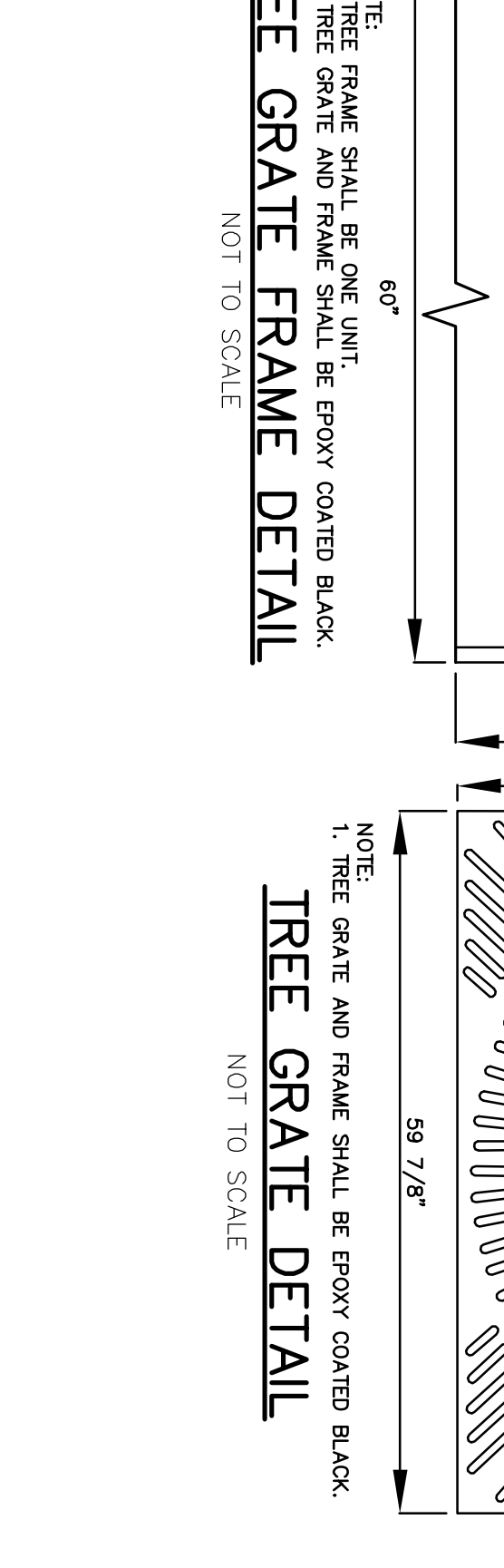
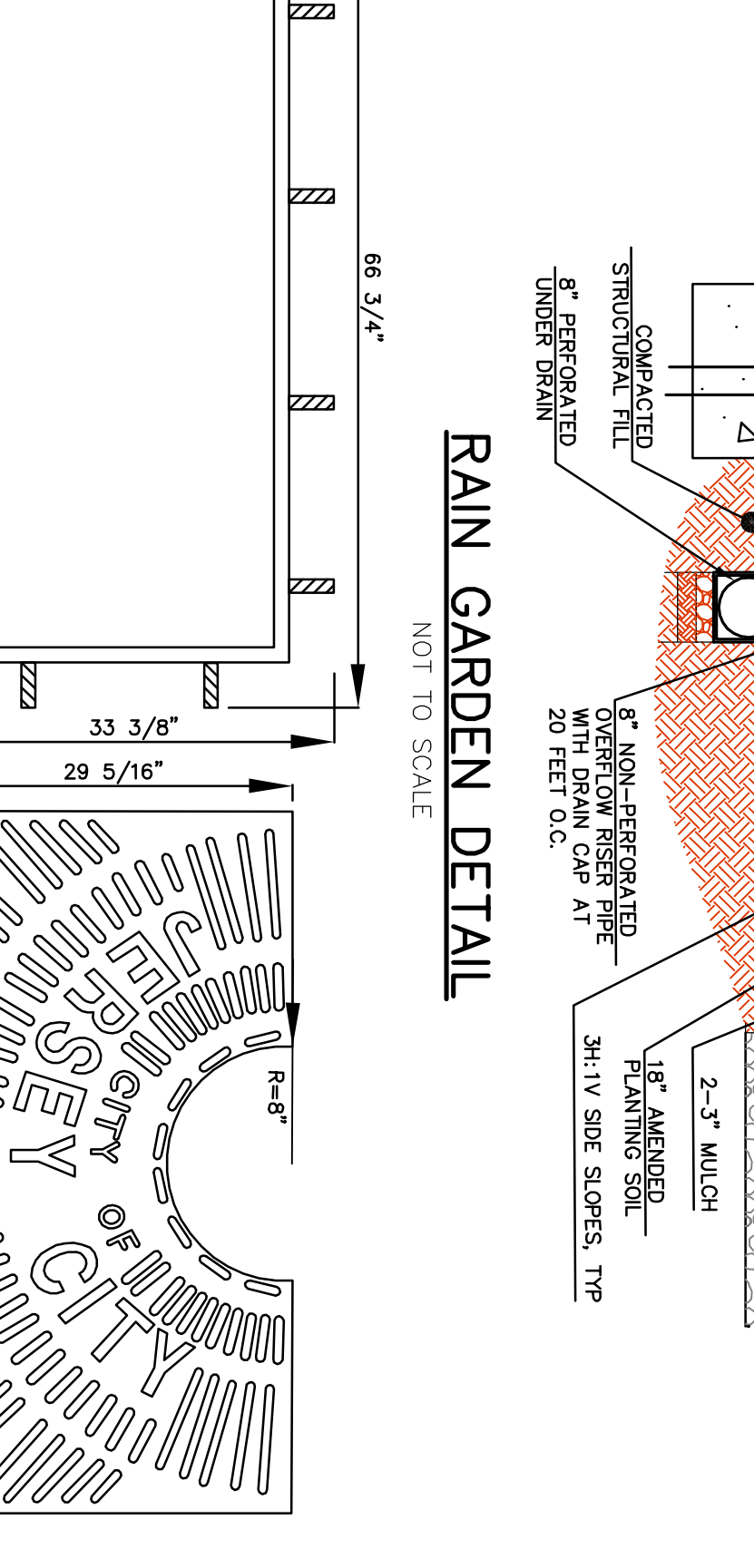
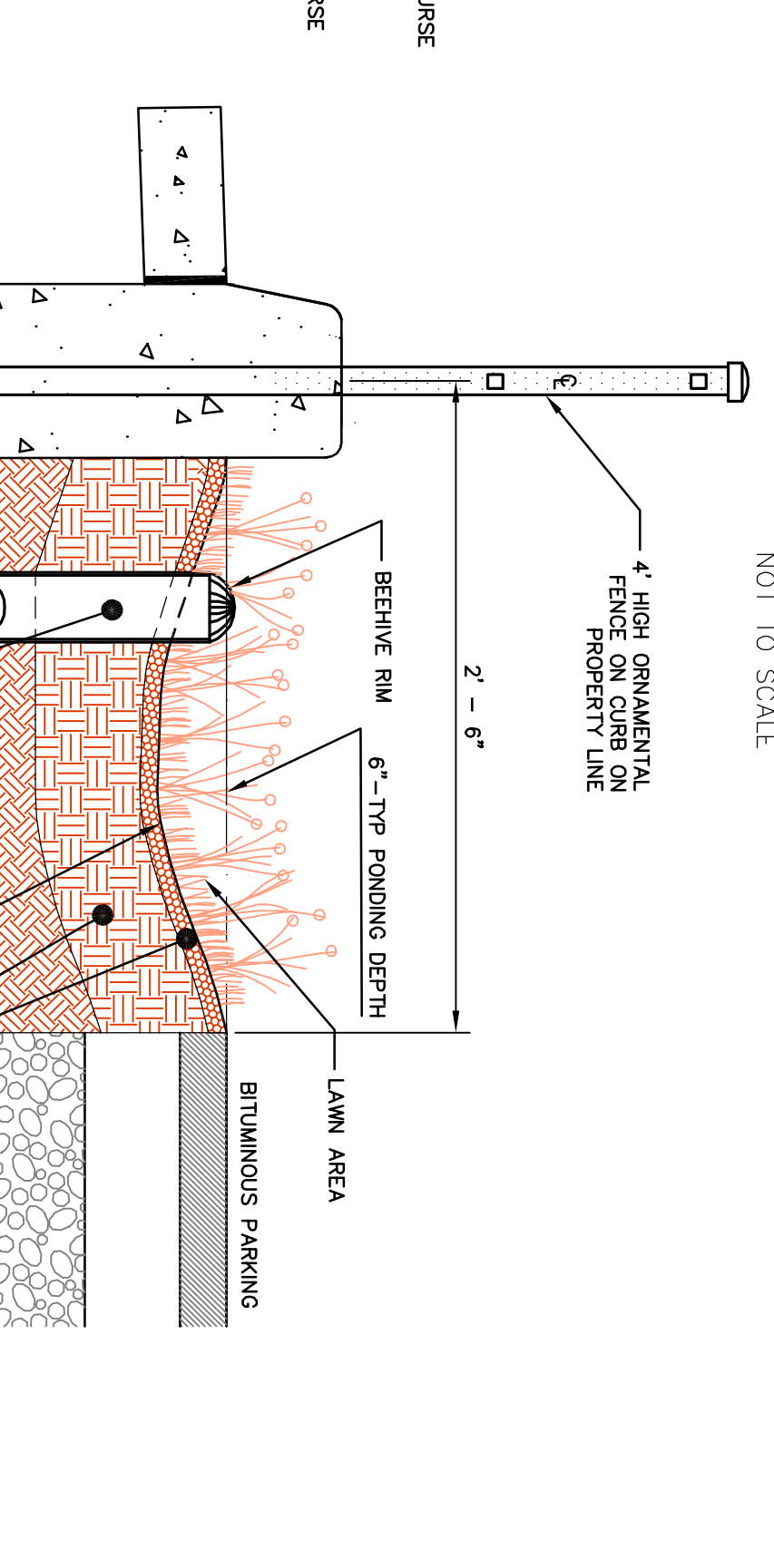
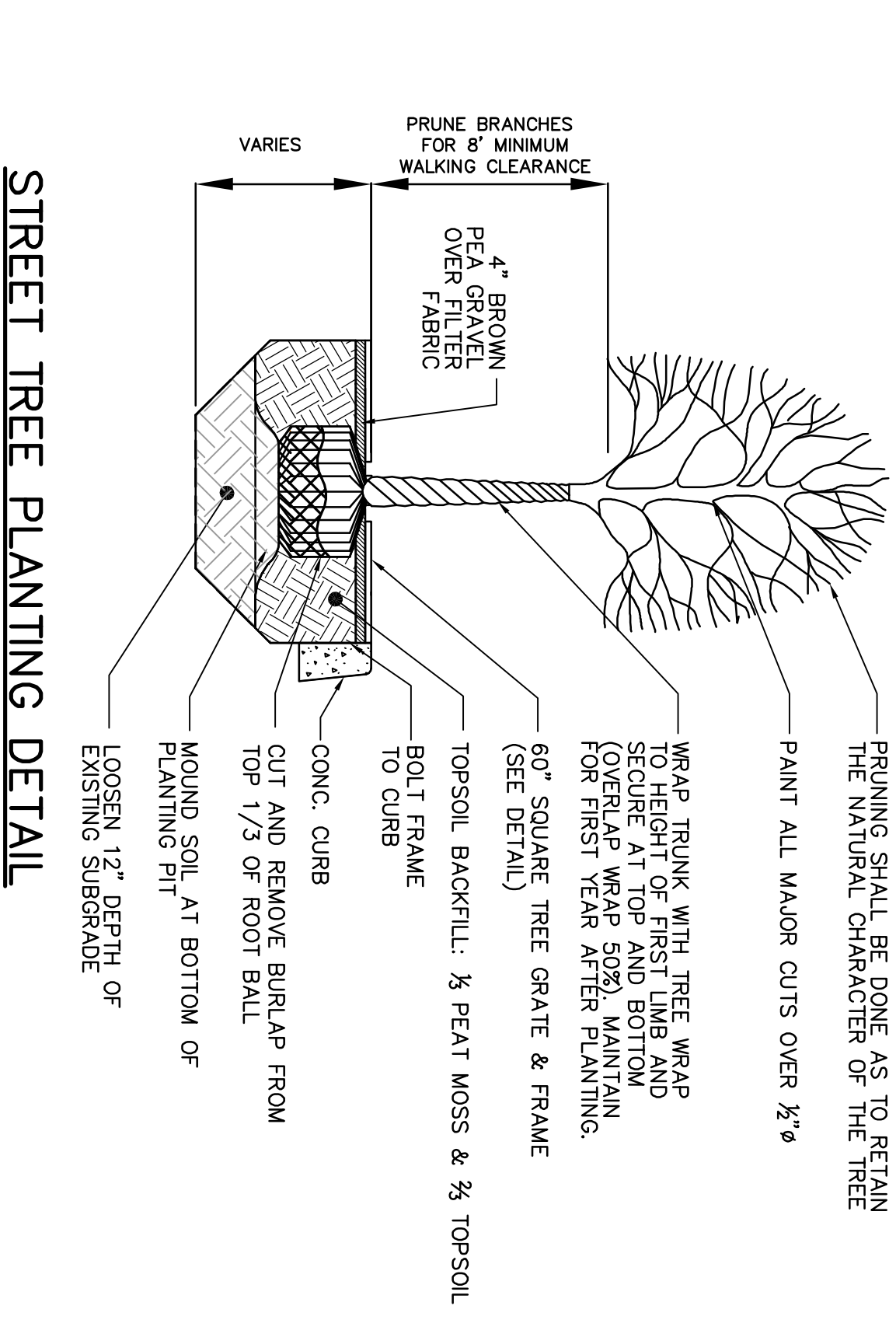
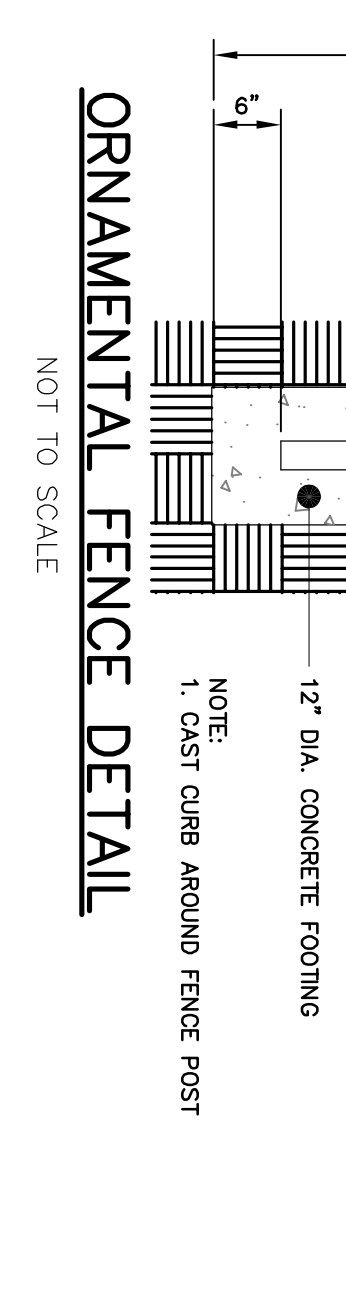
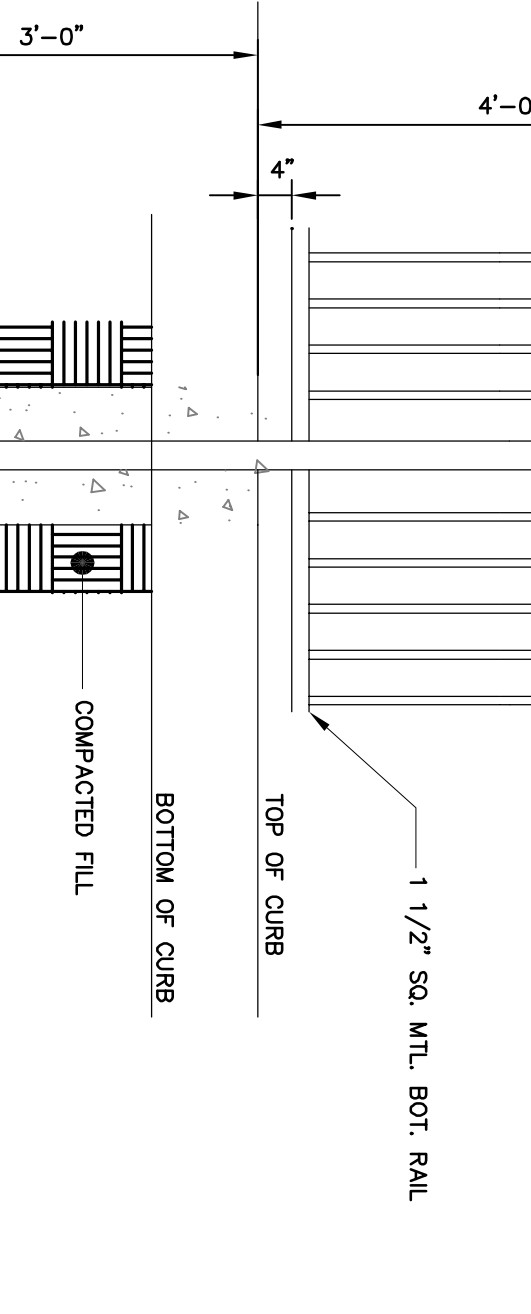
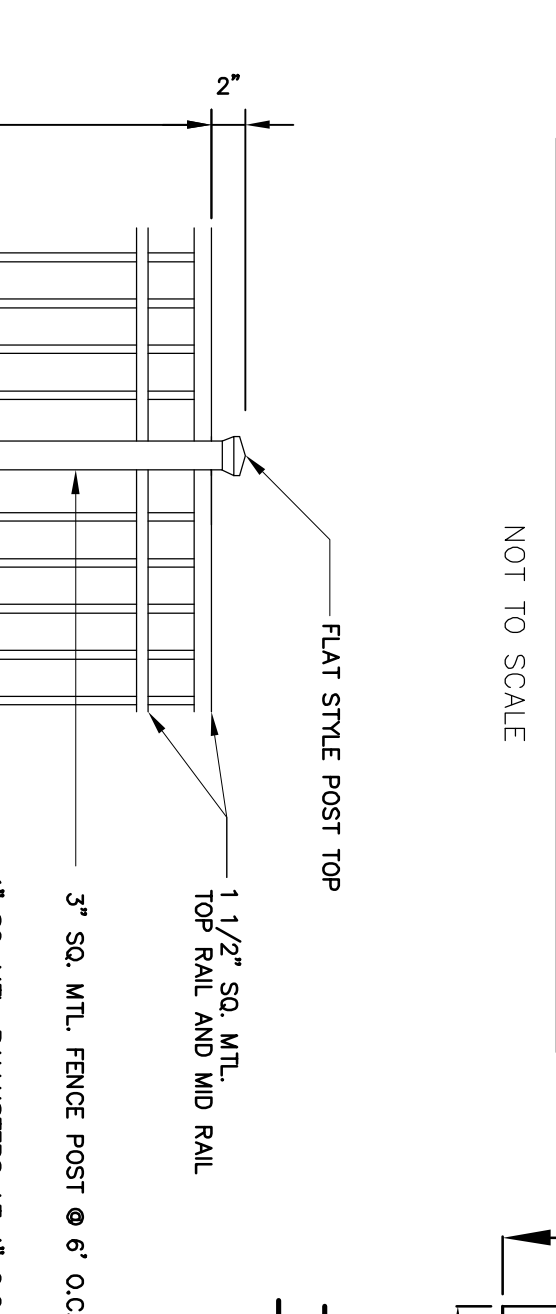
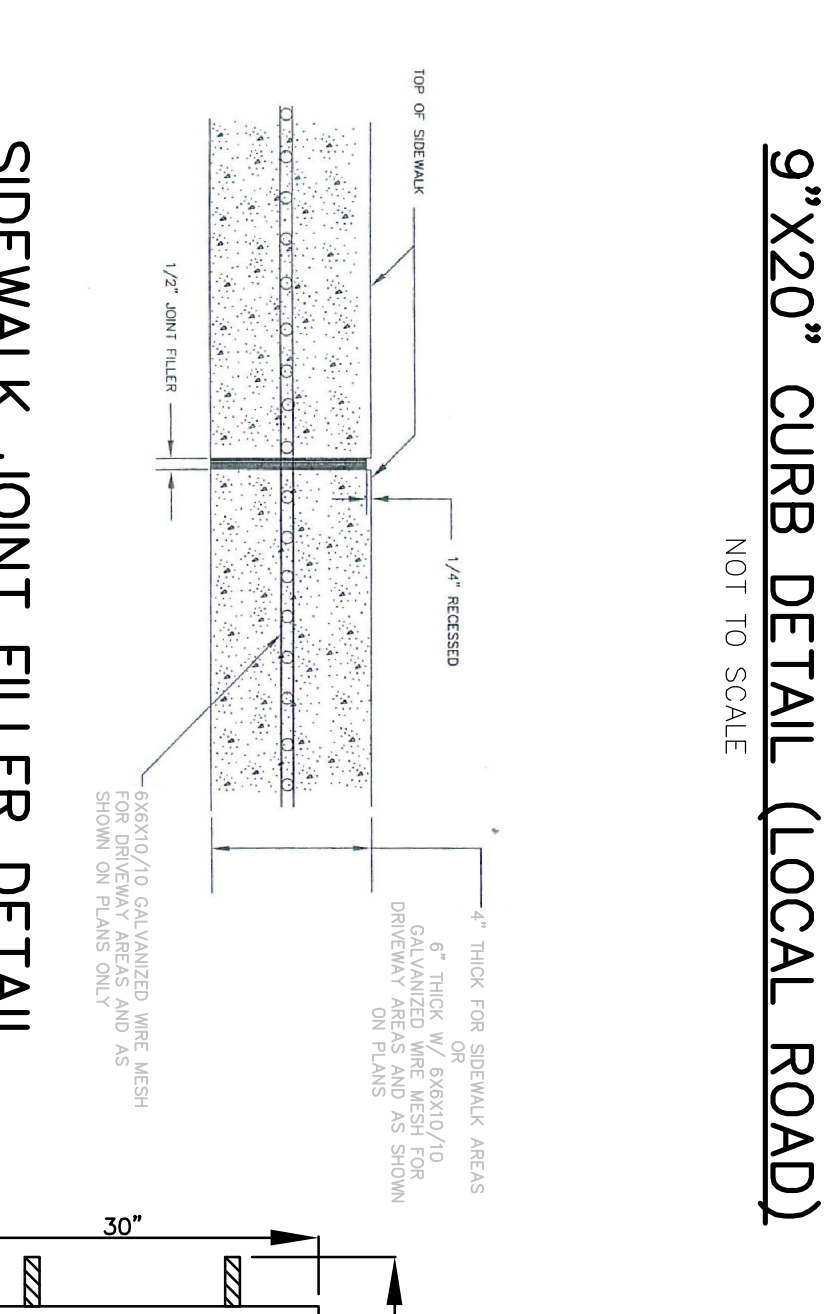
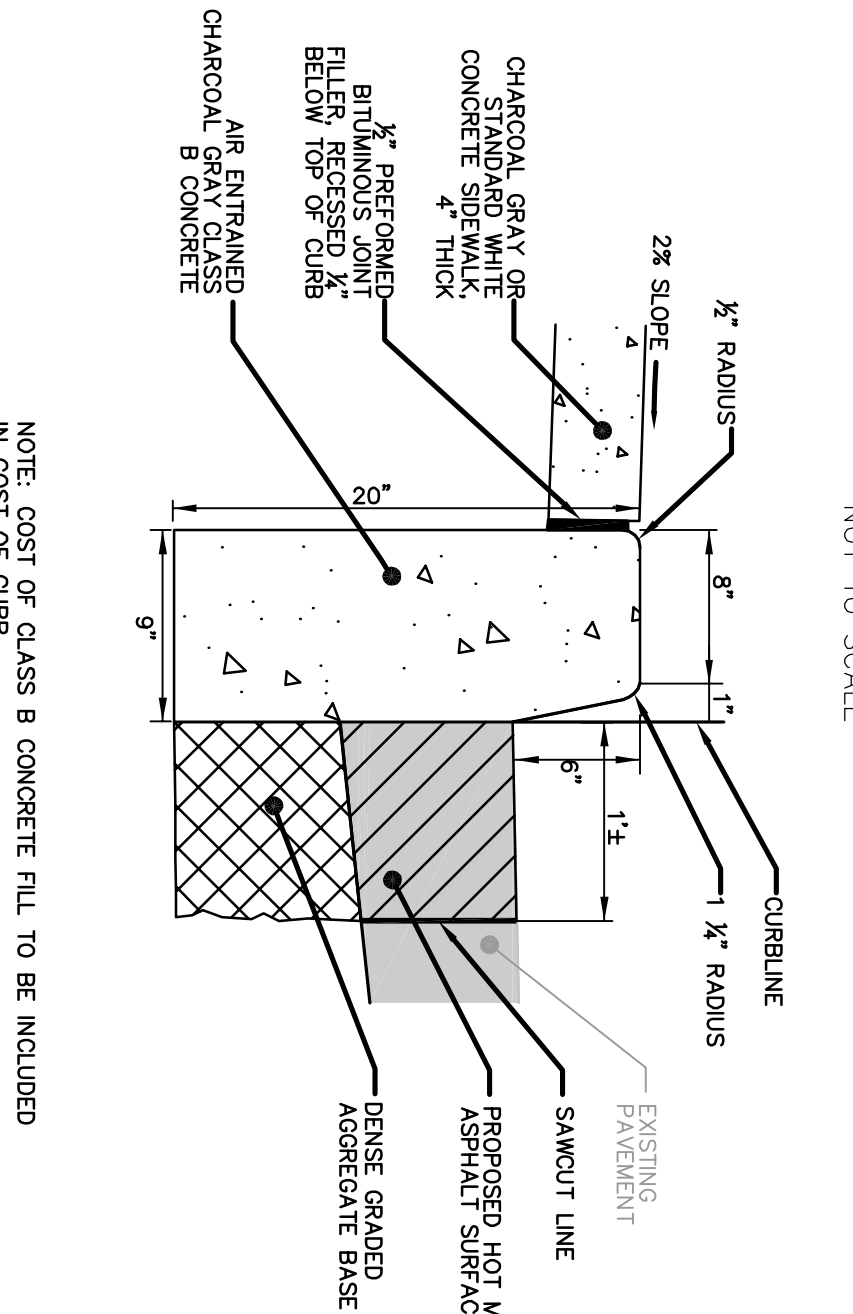
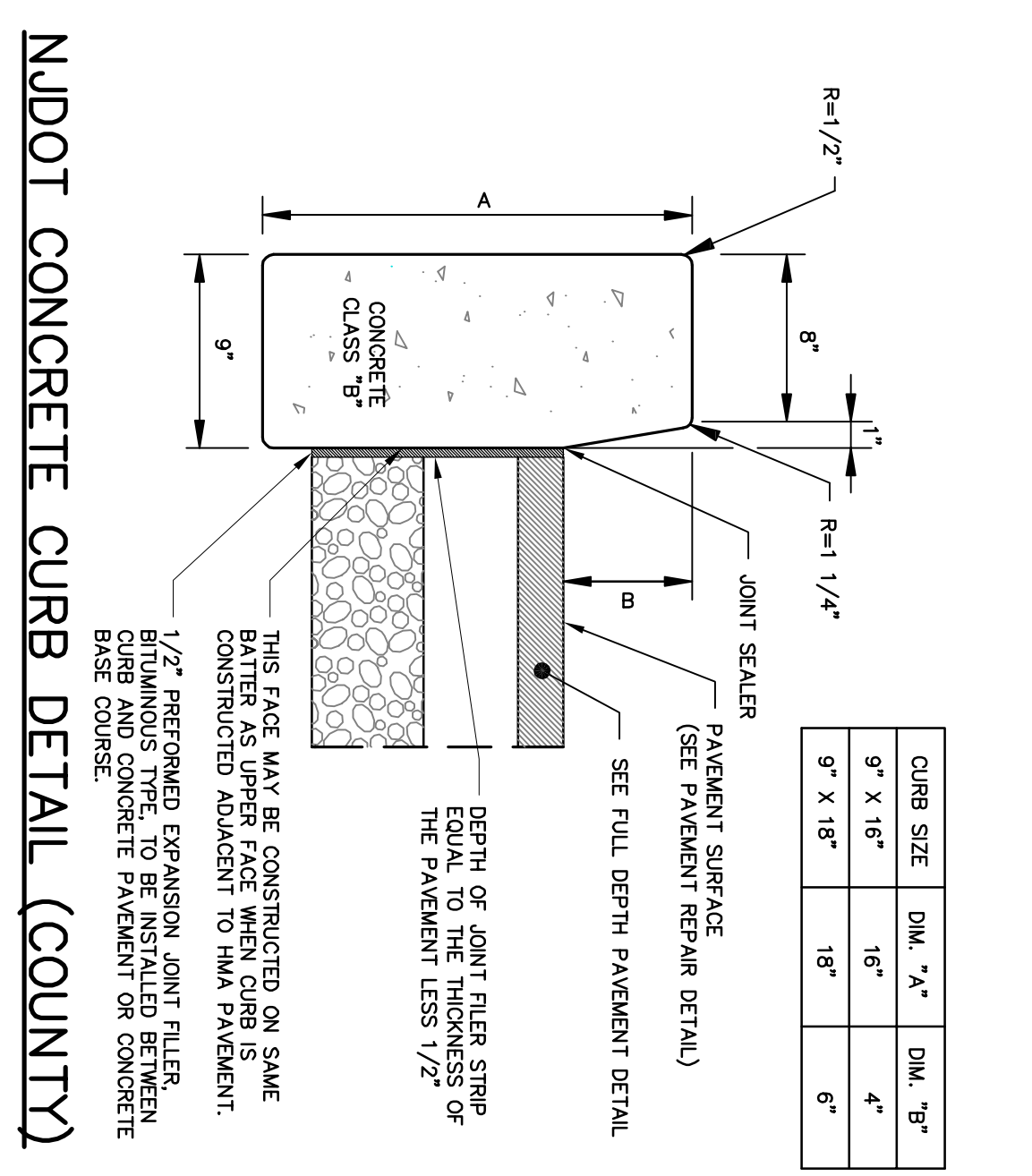
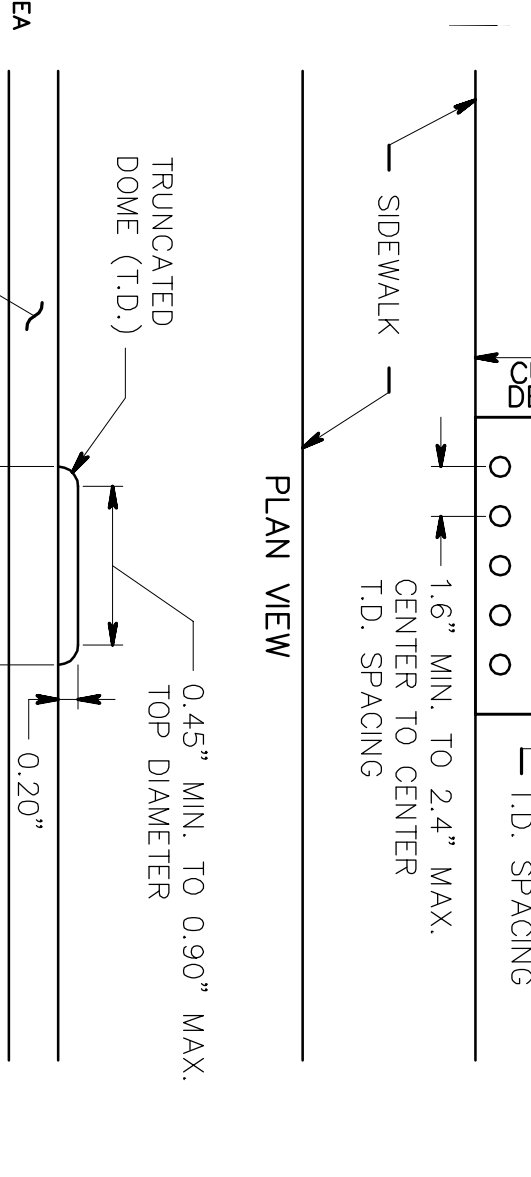
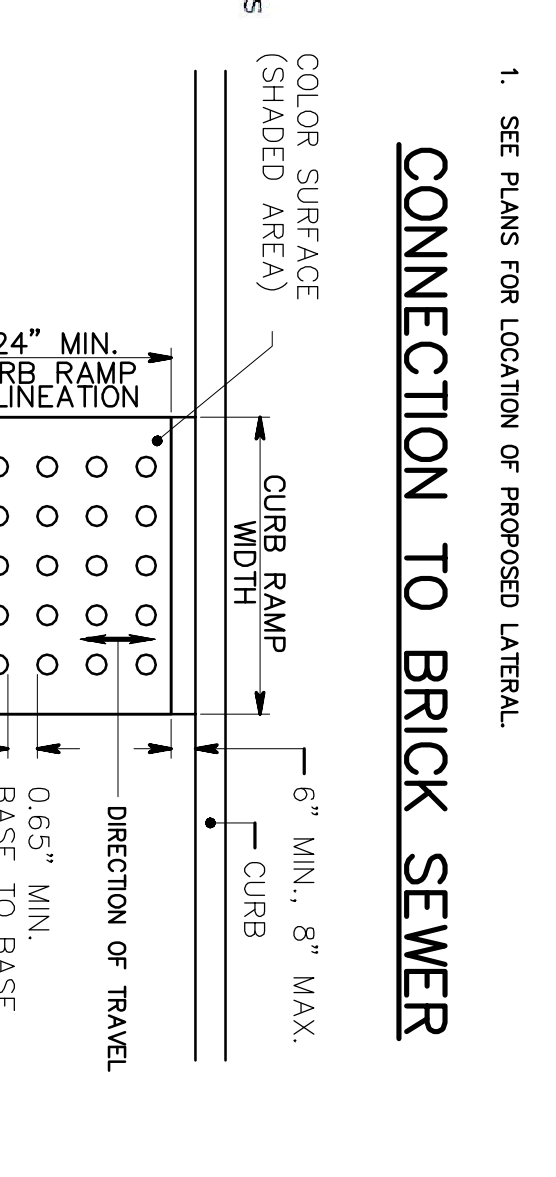
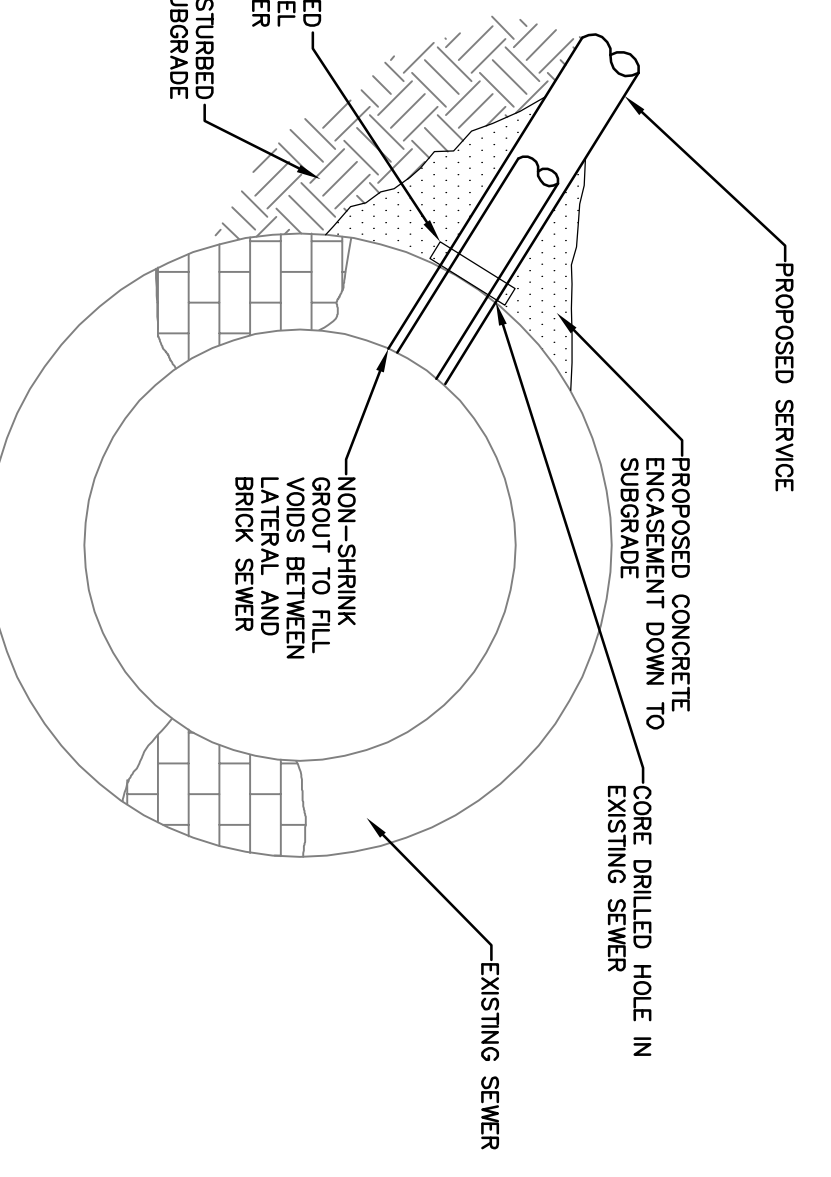
INCHES	FEET	FEET	FEET
3	2.5	9.0	3
4	3.3	10.6	4
5	4.2	12.4	5
6	5.0	14.0	6
7	5.8	15.6	7
8	6.7	17.4	8
9	7.5	19.0	9

CURB RAMP TYPE 1



CURB & SIDEWALK NOTES:

- ALL CURBING AND SIDEWALK SHALL BE CONSTRUCTED OF CHARCOAL GRAY AIR ENRICHED CLASS B CONCRETE OR STANDARD WHITE AIR ENRICHED CLASS B CONCRETE.
- A 1/2" PREFORMED EXPANSION JOINT FILLER BITUMINOUS TYPE, CONFORMING TO A.S.H.T.O. SPECS M-33 IS TO BE INSTALLED BETWEEN THE CURBING AND CONCRETE SIDEWALK AND AT 10' MAX. SPACING (TRANSVERSE AND LONGITUDINAL) IN THE SIDEWALK, RECESSED 1/4" IN FROM TOP OF SIDEWALK.
- TRANSVERSE JOINTS 1/2" WIDE SHALL BE INSTALLED IN THE CURBING TO APART AND SHALL BE RECESSED WITH PREFORMED BITUMINOUS JOINT FILLER TO A.S.H.T.O. SPECS M-33 FLUSH WITH THE TOP AND FACE OF CURB.
- COST OF EXPANSION JOINTS SHALL BE INCLUDED IN THE UNIT PRICE BID FOR SIDEWALK AND CURBING.
- ALL SIDEWALK, CURB RAMPS, AND SIDE RAMPS SHALL HAVE A MAGNESIUM FLOAT FINISH.
- THE NORMAL PAVEMENT EDGE PROFILE SHALL BE MAINTAINED THROUGH THE AREA OF THE CURB RAMPS.
- COST OF ANY DENSE GRADED AGGREGATE NEEDED FOR CURB RAMP SIDEWALK CONSTRUCTION WILL BE PAID FOR UNDER THE ITEM DESIGNATION.
- CONCRETE CURB SHALL NOT BE CONSTRUCTED FROM NOVEMBER 1 TO MARCH 15 UNLESS WRITTEN APPROVAL IS RECEIVED FROM THE ENGINEER.
- IMMEDIATELY AFTER THE CONCRETE HAS BEEN FINISHED, THE CONTRACTOR SHALL APPLY A COMPLETE UNIFORM COAT OF CURING COMPOUND AT A RATE OF NOT LESS THAN ONE (1) GALLON PER 200 SQUARE FEET.
- DETECTABLE WARNING SURFACE SHALL BE A MINIMUM OF 24"x48" AND SHALL BE A BRICK RED COLOR. DETECTABLE WARNING SURFACES SHALL BE INSTALLED ACCORDING TO THE CORRESPONDING CONSTRUCTION DETAILS SHOWN ON THE PLANS. THE MANUFACTURER'S RECOMMENDATION AND ACCORDING TO SUBSECTION 606.03.03 DETECTABLE WARNING SURFACES OF THE NDOT STANDARD SPECIFICATIONS AS AMENDED BY THE JERSEY CITY SUPPLEMENTARY SPECIFICATIONS.
- ALL TRAFFIC STRIPES AND MARKINGS SHALL BE LONG-LIFE, THERMOPLASTIC IN ACCORDANCE WITH SECTION 610 - TRAFFIC STRIPES AND MARKINGS OF THE NDOT STANDARD SPECIFICATIONS, AS AMENDED BY JERSEY CITY SUPPLEMENTARY SPECIFICATIONS.
- IN LIEU OF DEPRESSED CURB AND GRADOLE DETAIL, CURB AND SIDE WALK AT HANDICAP CURB RAMPS MAY BE POURED MONOLITHICALLY.



NO.	DATE	REVISIONS PER COMMENTS	BY
3.31.16			BAC EAR
12.16.14			BAC EAR

589 CENTRAL AVENUE & 512 PATERSON PLANK ROAD
QUANTUM SOUND LOUNGE
BOOK 503 LOTS 21 & 23
Hudson County
New Jersey

Edwin A. Reimon, P.E., C.M.E.
251 Ridge Road
Lyndhurst, NJ 07071

Job #: 2014-0700
Scale: AS SHOWN
Date: 08/06/2014

Drawn By: BAC
Checked By: E.A.R.
Sheet #: 4 of 4