

2600 Michelson Office Space Available

savills

FOR SUBLEASE

2600 Michelson Drive, Suites 1430 & 1420, Irvine, CA, 92612



SPACE PROFILE

1,287-2,529 SF

Total SF (Divisible)

June 2027

Term Thru

4/1,000 Unreserved

Parking Space

Call to Verify

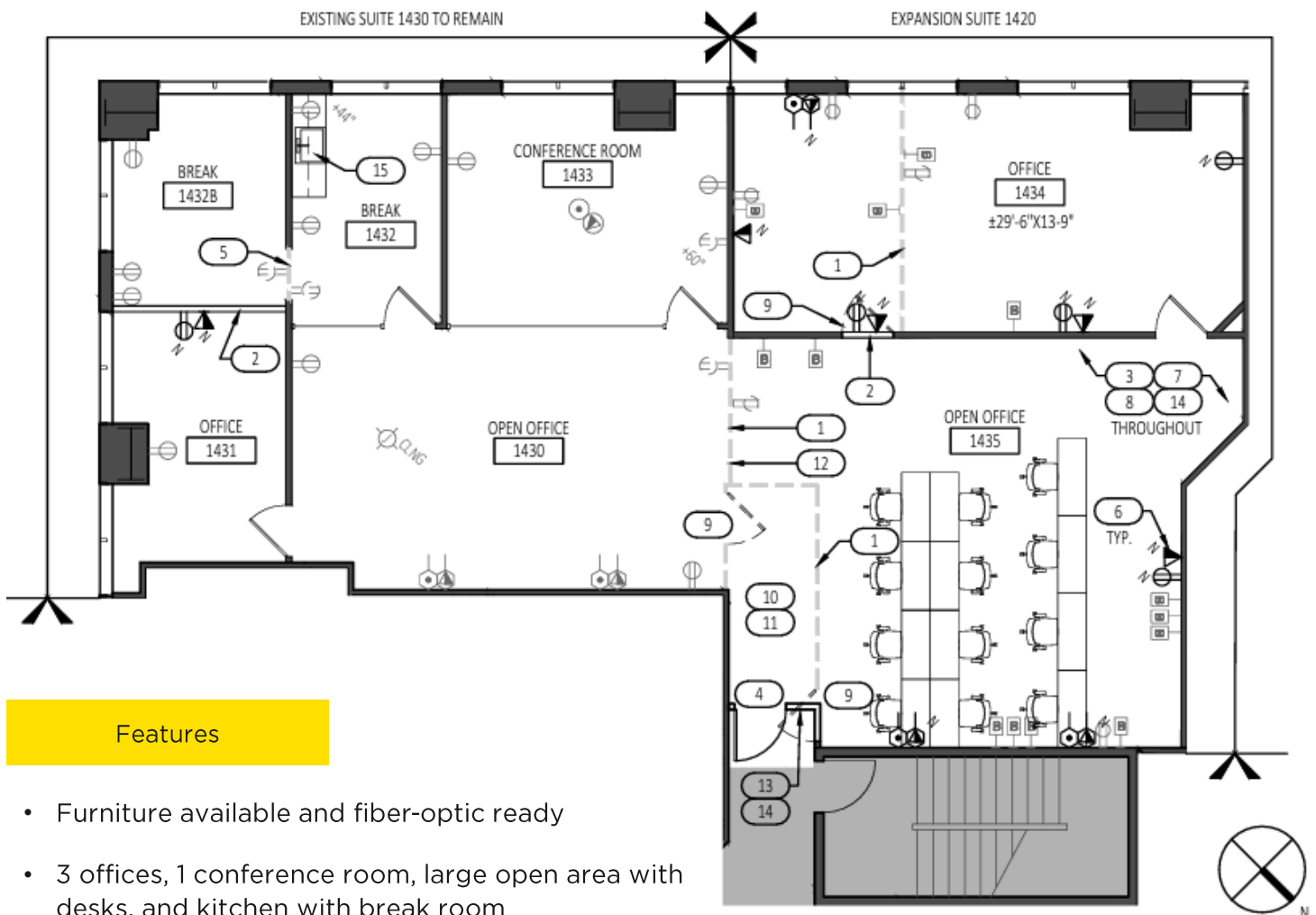
Rental rate

60-90 Days

Availability

Available

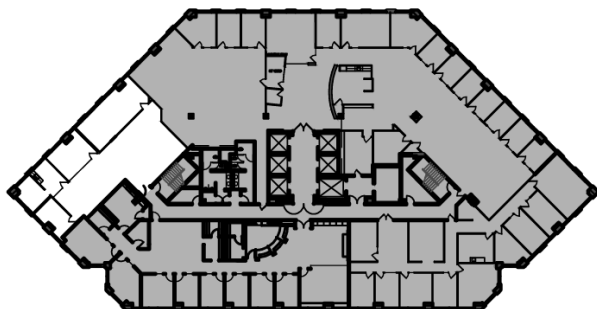
Furniture



Features

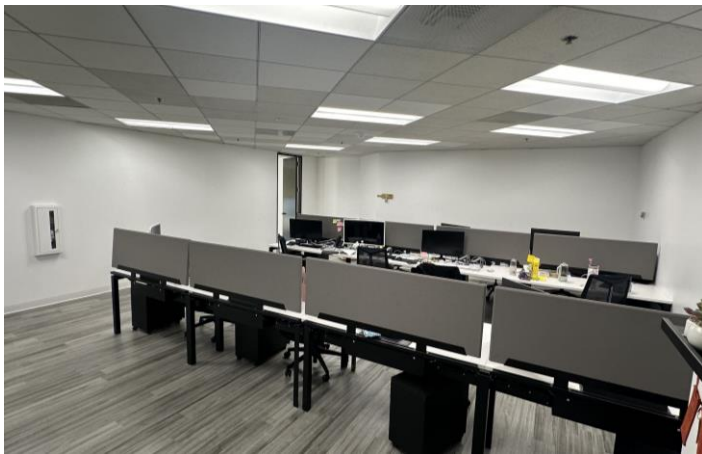
- Furniture available and fiber-optic ready
- 3 offices, 1 conference room, large open area with desks, and kitchen with break room
- 14th floor provides stunning ocean and mountain views
- Property amenities include MJ's café, fitness center, car wash, and on-site concierge

KEY PLAN



LEGEND

	AREA NOT IN CONTRACT (N.I.C.)
	EXISTING MILLWORK TO REMAIN
	EXISTING PARTITION TO REMAIN
	NEW PARTITION
	EXISTING PARTITION TO BE REMOVED
	NEW / RELOCATED EXISTING SINGLE DOOR, DOOR FRAME AND HARDWARE
	EXISTING DOOR, DOOR FRAME AND DOOR HARDWARE IS TO REMAIN AT LOCATION SHOWN.
	FRAMED GLASS PARTITION TO REMAIN



Jeff Manley

+1 949 706 6617
jmanley@savills.us
License 01170369

Drew DeMarco

+1 949 706 6947
ademarco@savills.us
License 02095000



The information contained in this communication has been obtained from a variety of sources believed to be reliable but has not been verified. NO WARRANTY OR REPRESENTATION, EXPRESS OR IMPLIED, IS MADE AS TO THE CONDITION OF THE PROPERTY OR ACCURACY OR COMPLETENESS OF THE INFORMATION CONTAINED HEREIN AND SAME IS SUBMITTED SUBJECT TO ERRORS, OMISSIONS, CHANGE OF PRICE, RENTAL OR OTHER CONDITIONS, WITHDRAWAL WITHOUT NOTICE AND TO ANY SPECIFIC CONDITIONS IMPOSED BY THE PROPERTY OWNER OR LESSOR.