

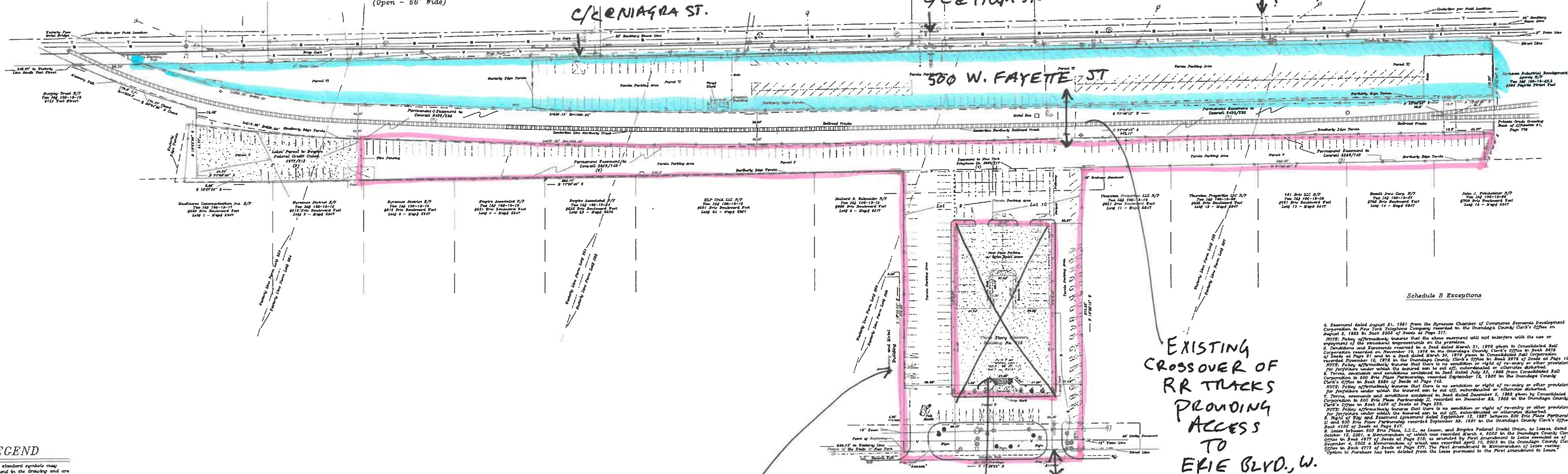


← West Fayette Street →
(Open - 66' Wide)

C/O NIAGARA ST.

C/O E TIOGA ST.

← West Fayette Street →
(Open - 66' Wide)
POT. C/O OSWEGO ST.



LEGEND

- From Road
- Flagpole
- Sign/Marker
- Tree 20' Diameter
- Gas Meter/Valve
- Utility Pole
- Manhole
- Day Pipe Anchor
- Trench Signal Markers
- Storm Sewer Manhole
- Water Pole
- Telephone Manhole
- Electric Manhole
- Catch Basin
- Secondary Sewer Manhole
- Hydrant
- Water Tower
- Light Pole/Sight Triangle
- Underground Telephone Marker
- Landmark Parking Space
- Curbside/Support Beam
- Overhead Utility Line
- Chain Link Fence
- Underground Electric Line
- Underground Telephone Line
- Secondary Sewer Line
- Storm Sewer Line
- Underground Gas Line
- Curbing

Notes:

- 1) This survey was prepared to reflect the Chicago Title Insurance Company (Chicago Title Insurance) plat of 1972 and is not to be used for any other purpose.
- 2) The location of underground utilities shown herein are based on existing records and are not to be relied upon for any other purpose.
- 3) This plan is subject to the rules and regulations of the Illinois State Survey Board.
- 4) There is no warranty or liability for any errors or omissions in this plan.
- 5) All measurements are in feet and inches.
- 6) All bearings are in degrees, minutes and seconds.
- 7) The survey was conducted on 10/15/2014.
- 8) The survey was conducted by Michael J. Schuchter, PLS.
- 9) The survey was conducted by Michael J. Schuchter, PLS.
- 10) The survey was conducted by Michael J. Schuchter, PLS.

Flood Information:

- 1) The project is located in Zone 'X', (Area of Moderate Flooding) as per FEMA Flood Insurance Rate Map (FIRM) 17020-01-001-A, dated 08/14/07.
- 2) The project is located in Zone 'X', (Area of Moderate Flooding) as per FEMA Flood Insurance Rate Map (FIRM) 17020-01-001-A, dated 08/14/07.
- 3) The project is located in Zone 'X', (Area of Moderate Flooding) as per FEMA Flood Insurance Rate Map (FIRM) 17020-01-001-A, dated 08/14/07.

Map References:

- 1) Survey 1887, made by G. W. C. ...
- 2) Survey 1887, made by G. W. C. ...
- 3) Survey 1887, made by G. W. C. ...
- 4) Survey 1887, made by G. W. C. ...
- 5) Survey 1887, made by G. W. C. ...
- 6) Survey 1887, made by G. W. C. ...
- 7) Survey 1887, made by G. W. C. ...
- 8) Survey 1887, made by G. W. C. ...
- 9) Survey 1887, made by G. W. C. ...
- 10) Survey 1887, made by G. W. C. ...

TAX LOT BOUNDARY

SELF STORAGE BUILDING

EXISTING CROSSOVER OF RR TRACKS PROVIDING ACCESS TO ERIE BLVD., W.

Suggested Parcel Description

All that tract and or parcel of land situate in the City of Syracuse, County of Onondaga and State of New York, being all of Lots Nine and Ten of a map made by the City of Syracuse Engineering Department entitled "Re-subdivision Part of Farm Lots 254, 255, 256, 257, 258 & 259" and recorded in the Onondaga County Clerk's Office December 31, 1878 as Map 6877 and also part of Farm Lots 253, 254, 255, 256 and 257 in said City and being more particularly described as follows: Beginning at an iron rod stake in the present southerly line of Erie Boulevard West, said rod being 5.77'-31"-00" E., a distance of 898.70 feet, to a monument along said southerly line, from the intersection with the westerly line of lands of the People of the State of New York (West Fayette Street); thence S. 17°-00'-00" E., a distance of 872.82 feet to a point; thence N. 77°-00'-00" E., a distance of 685.04 feet to a point; thence S. 17°-00'-00" E., a distance of 6.22 feet to a point; thence N. 77°-00'-00" E., a distance of 47.77 feet to a point; thence S. 17°-00'-00" E., a distance of 81.77 feet to a point; thence, southeasterly, on a curve to the right, said curve having a radius of 1000.00 feet and a chord bearing of S. 89°-04'-12" E., and distance of 178.47 feet, to a monument on the present southerly line of West Fayette Street, said monument being 2.77'-00"-00" E., a distance of 243.07 feet, as measured along said northerly line, from the intersection with the present westerly line of South East Street; thence N. 17°-00'-00" E., along said northerly line, a distance of 122.47 feet to a point; thence N. 17°-00'-00" E., a distance of 36.71 feet to a point; thence N. 77°-00'-00" E., a distance of 122.00 feet to a point; thence N. 17°-00'-00" E., a distance of 372.02 feet to a point situate in said southerly line of Erie Boulevard West; thence N. 77°-00'-00" E., along said southerly line, a distance of 225.63 feet to the point and place of beginning. The hereunto described parcel of land contains 8.28 acres (828.44 square meters), more or less, and is subject to and together with any and all easements, restrictions and/or rights of way of record.

6. Easement dated August 21, 1981 from the Syracuse Chamber of Commerce Economic Development Corporation to Erie Boulevard West, Inc. ...

7. Easement dated August 21, 1981 from the Syracuse Chamber of Commerce Economic Development Corporation to Erie Boulevard West, Inc. ...

8. Easement dated August 21, 1981 from the Syracuse Chamber of Commerce Economic Development Corporation to Erie Boulevard West, Inc. ...

9. Easement dated August 21, 1981 from the Syracuse Chamber of Commerce Economic Development Corporation to Erie Boulevard West, Inc. ...

10. Easement dated August 21, 1981 from the Syracuse Chamber of Commerce Economic Development Corporation to Erie Boulevard West, Inc. ...

11. Easement dated August 21, 1981 from the Syracuse Chamber of Commerce Economic Development Corporation to Erie Boulevard West, Inc. ...

12. Easement dated August 21, 1981 from the Syracuse Chamber of Commerce Economic Development Corporation to Erie Boulevard West, Inc. ...

13. Easement dated August 21, 1981 from the Syracuse Chamber of Commerce Economic Development Corporation to Erie Boulevard West, Inc. ...

14. Easement dated August 21, 1981 from the Syracuse Chamber of Commerce Economic Development Corporation to Erie Boulevard West, Inc. ...

15. Easement dated August 21, 1981 from the Syracuse Chamber of Commerce Economic Development Corporation to Erie Boulevard West, Inc. ...

16. Easement dated August 21, 1981 from the Syracuse Chamber of Commerce Economic Development Corporation to Erie Boulevard West, Inc. ...

17. Easement dated August 21, 1981 from the Syracuse Chamber of Commerce Economic Development Corporation to Erie Boulevard West, Inc. ...

18. Easement dated August 21, 1981 from the Syracuse Chamber of Commerce Economic Development Corporation to Erie Boulevard West, Inc. ...

19. Easement dated August 21, 1981 from the Syracuse Chamber of Commerce Economic Development Corporation to Erie Boulevard West, Inc. ...

20. Easement dated August 21, 1981 from the Syracuse Chamber of Commerce Economic Development Corporation to Erie Boulevard West, Inc. ...

21. Easement dated August 21, 1981 from the Syracuse Chamber of Commerce Economic Development Corporation to Erie Boulevard West, Inc. ...

22. Easement dated August 21, 1981 from the Syracuse Chamber of Commerce Economic Development Corporation to Erie Boulevard West, Inc. ...

23. Easement dated August 21, 1981 from the Syracuse Chamber of Commerce Economic Development Corporation to Erie Boulevard West, Inc. ...

24. Easement dated August 21, 1981 from the Syracuse Chamber of Commerce Economic Development Corporation to Erie Boulevard West, Inc. ...