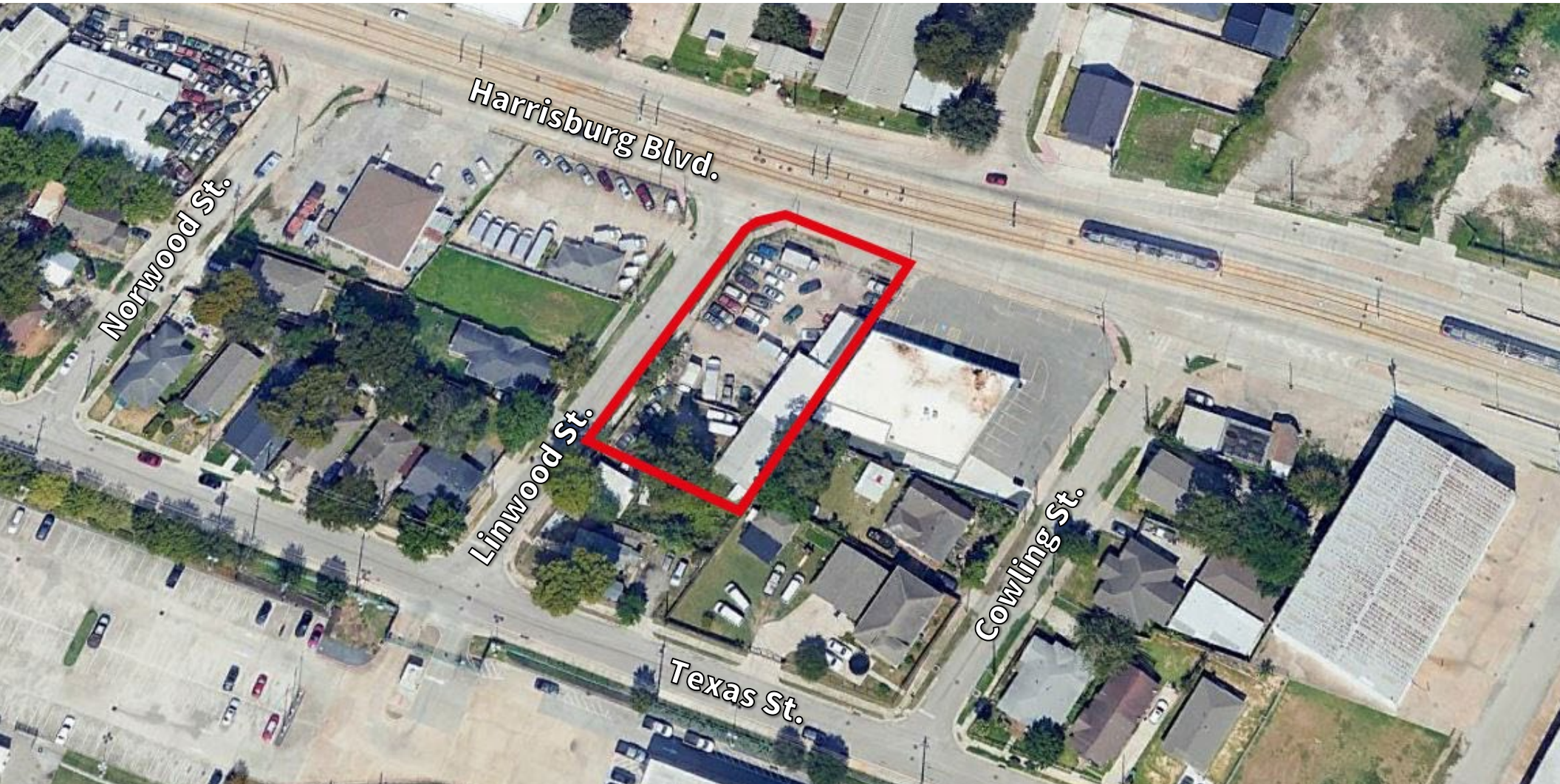


LAND FOR SALE **+0.50 AC**



5902 HARRISBURG BLVD. | HOUSTON, TX 77011 | **\$850,000 ASKING PRICE**

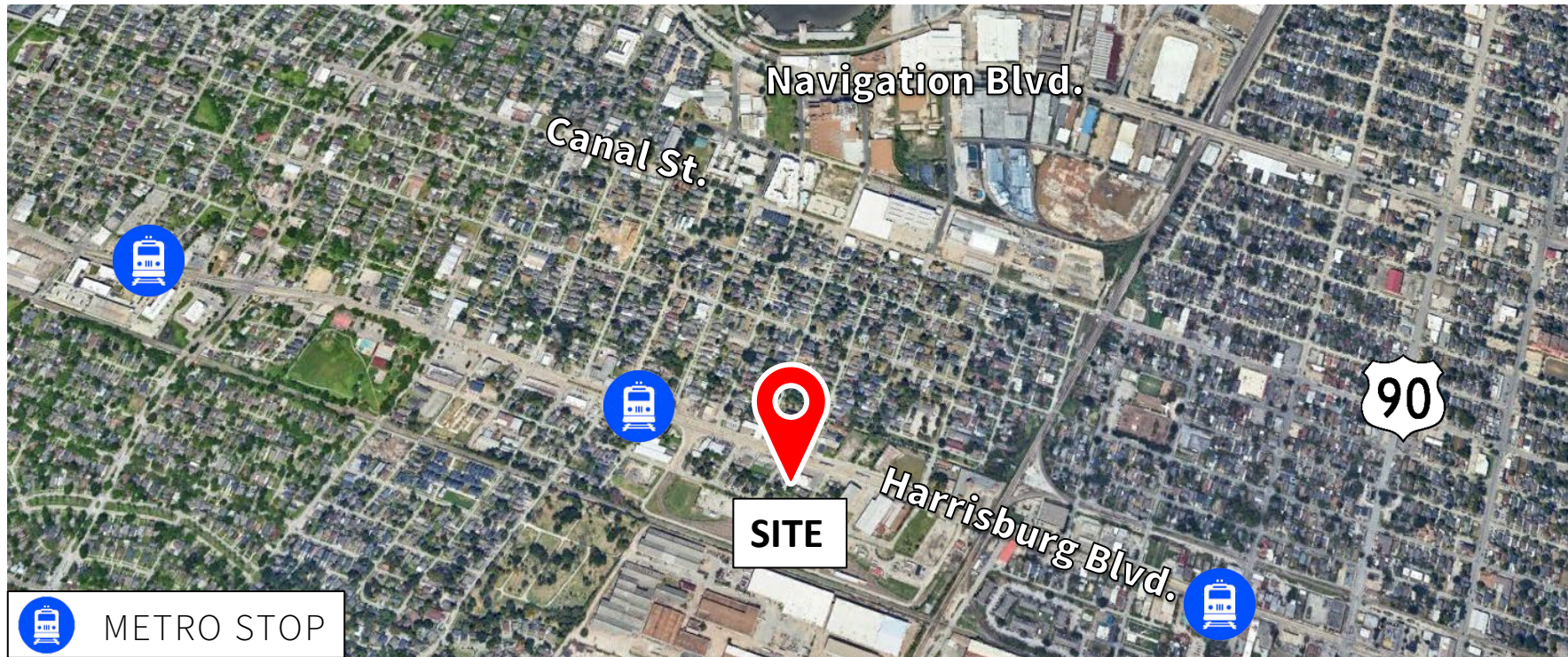


Anya Marmuscak
+1 713 425 5833
anya.marmuscak@jll.com

Clara VanLandingham
+1 713 425 1818
clara.vanlandingham@jll.com

AREA LOCATION

+0.50 AC | 5902 HARRISBURG BLVD. | HOUSTON, TX 77011  2



Location

Along Harrisburg Blvd., in between Houston's Second Ward and Greater East End neighborhoods

Surrounding Area

- Sits on newly expanded rail line with direct access to Downtown Houston
- Walking distance to several restaurants
- 1 mile from the University of Houston & newly renovated Gus Wortham Golf Course

Pricing

\$850,000 Sales Price (\$38.56/SF)



Demographics

Population Summary	2-Mile	5-Mile	10-Mile
2023 Population	51,661	330,564	1,173,219
Median Age	34.7	36.1	35.8
Average Household Income	\$59,157	\$76,982	\$90,434
Average Home Value	\$182,151	\$175,487	\$191,160



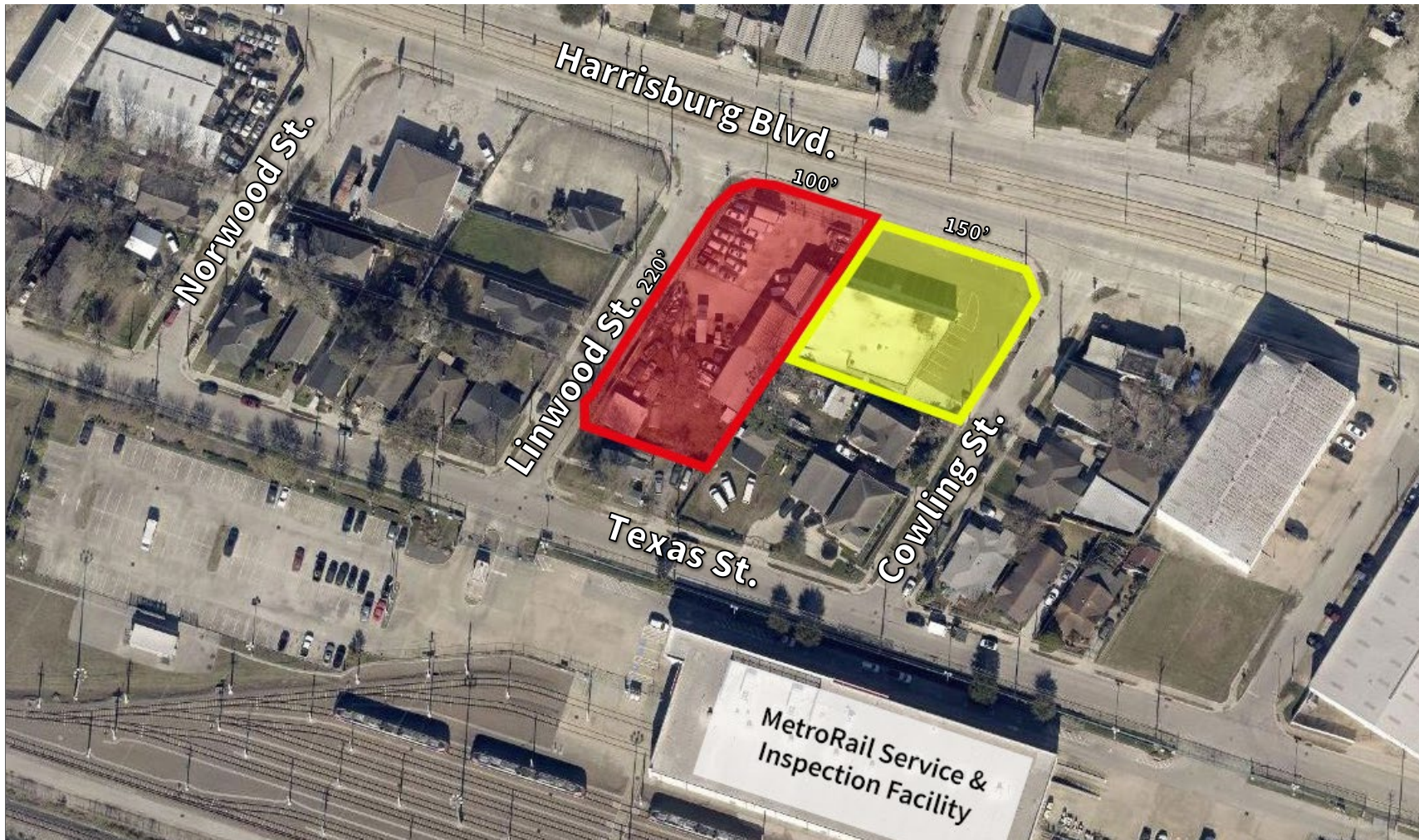
Drive Times

Locations	Minutes
Downtown Houston	3
William P. Hobby Airport	15
The Galleria	20
Houston George Bush Intercontinental Airport	29

PROPERTY SURVEY

+0.50 AC | 5902 HARRISBURG BLVD. | HOUSTON, TX 77011  3

5902 & 5914 HARRISBURG BLVD. (ON MARKET BY DIFFERENT OWNER) PROVIDE ENTIRE BLOCK FRONTAGE



VIEW 5914 HARRISBURG BLVD. INFORMATION [HERE](#)

PROPERTY AERIAL

+0.50 AC | C5902 HARRISBURG BLVD. | HOUSTON, TX 77011  4

