

FOR LEASE
FLEX SPACE
MULTIPLE
UNITS
AVAILABLE

14600

**SOUTH
INDUSTRIAL
PARKWAY**

MAPLE HEIGHTS, OH 44137

CBRE

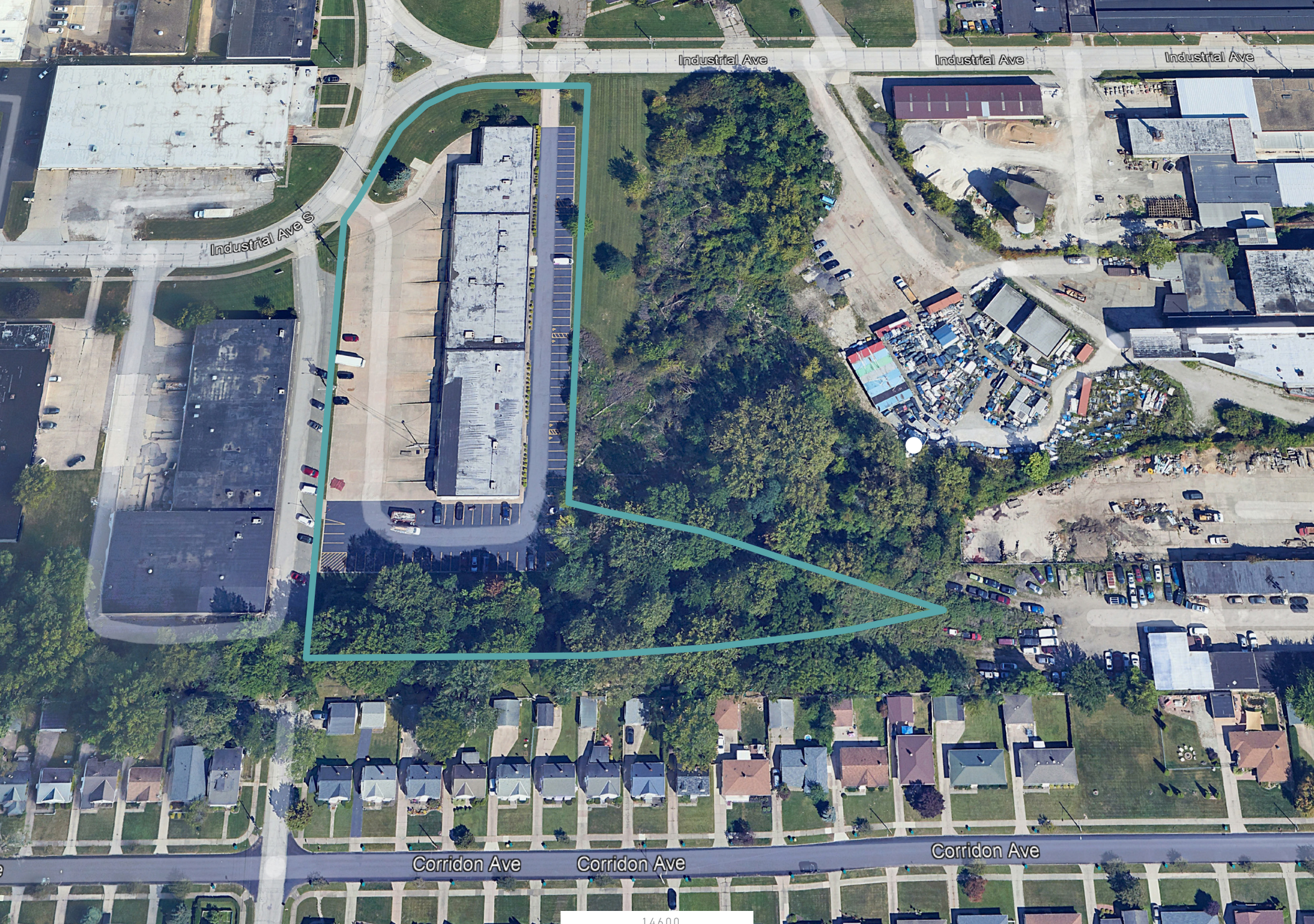
PROPERTY OVERVIEW - FLEX SPACE MULTIPLE UNITS AVAILABLE

Property Overview

- Total Available Space: ±5,800 SF; divisible to 3 units
All units are contiguous and can be combined.
- Grade level doors - 2 (14')
- Ample parking with large truck court
- Excellent location 12 miles southeast of downtown Cleveland with immediate access to I-480 and I-77
- Unit 1: 2400 SF warehouse with drive-in door
\$1,500/month
- Unit 2: 2,400 SF warehouse with drive-door and 600 SF office space
\$1,500/month
- Unit 3: 1,000 SF office
\$800/month



14600
South Industrial
Parkway



Industrial Ave

Industrial Ave

Industrial Ave

Industrial Ave S

Corridon Ave

Corridon Ave

Corridon Ave

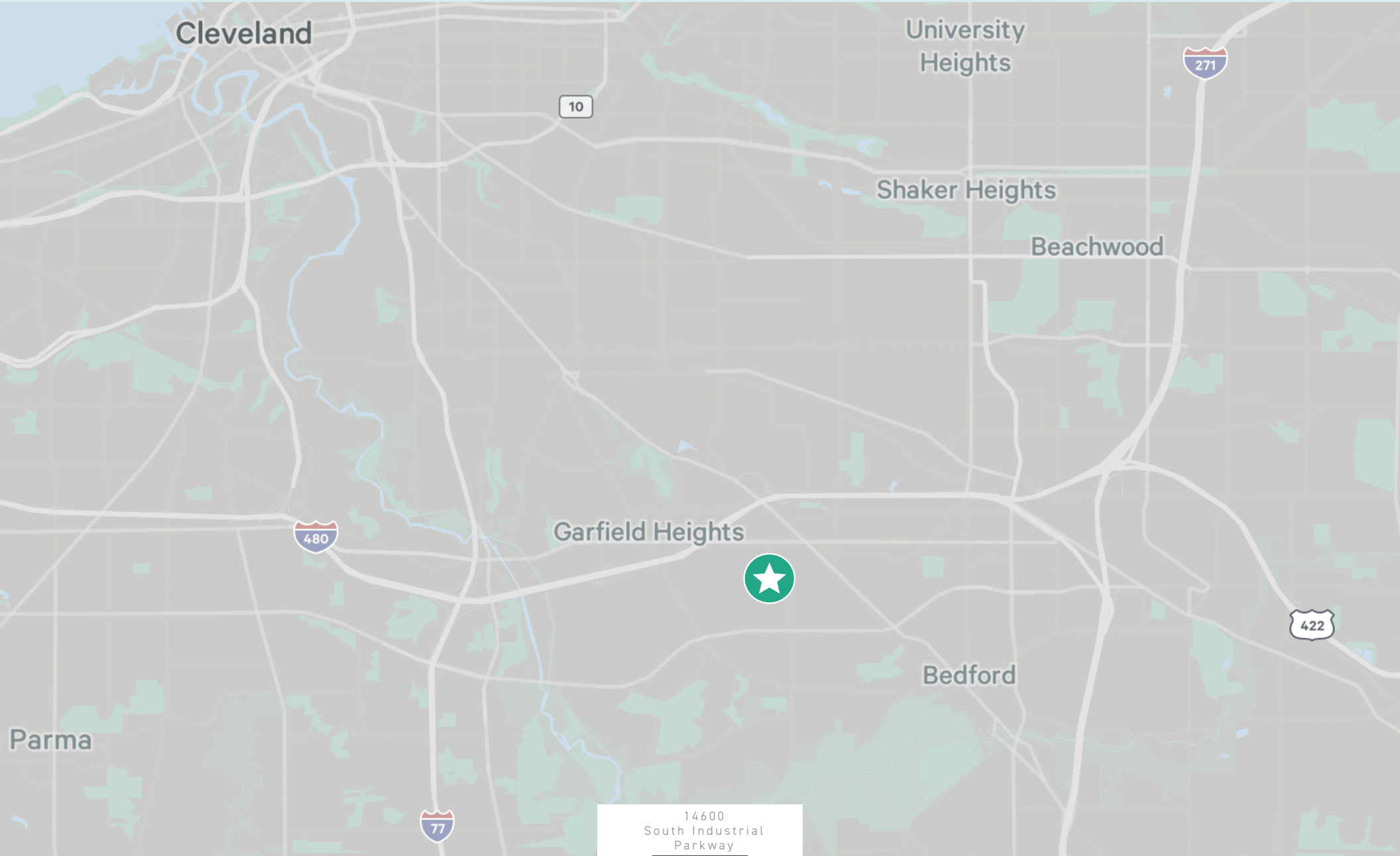
14600
South Industrial
Parkway



14600
South Industrial
Parkway

LOCATION MAP - FLEX SPACE MULTIPLE UNITS AVAILABLE

14600 S. INDUSTRIAL PARKWAY - MAPLE HEIGHTS, OH 44137



14600
South Industrial
Parkway

14600

SOUTH INDUSTRIAL PARKWAY

MAPLE HEIGHTS, OH 44137

CONTACT US

Michael J. Toth III

Vice President
+1 440 669 9422
michael.toth@cbre.com

Howard A. Lichtig, SIOR

Vice President
+1 216 363 6410
howard.lichtig@cbre.com

CBRE, Inc.

950 Main Avenue
Suite 800
Cleveland, Ohio 44113

© 2025 CBRE, Inc. All rights reserved. This information has been obtained from sources believed reliable, but has not been verified for accuracy or completeness. You should conduct a careful, independent investigation of the property and verify all information. Any reliance on this information is solely at your own risk. CBRE and the CBRE logo are service marks of CBRE, Inc. All other marks displayed on this document are the property of their respective owners, and the use of such logos does not imply any affiliation with or endorsement of CBRE. Photos herein are the property of their respective owners. Use of these images without the express written consent of the owner is prohibited. Licensed Real Estate Broker.



CBRE