

FOR SALE Fully Entitled Mixed Use Project



401 Shell Beach Rd. | Pismo Beach, CA

- Right next to the Pacific Ocean
- High visibility location
- Great outdoor seating
- Total of approximately 17,291 square feet of land in 3 parcels
- Commercial/restaurant space on the ground floor/residential on the second floor
- Designed by RRM

Chris Garner
805.928.2800 ext. 104
CGarner@PacificaCRE.com
Lic #01010310

PO Box 250 | Santa Maria, CA 93456 | PacificaCommercialRealty.com



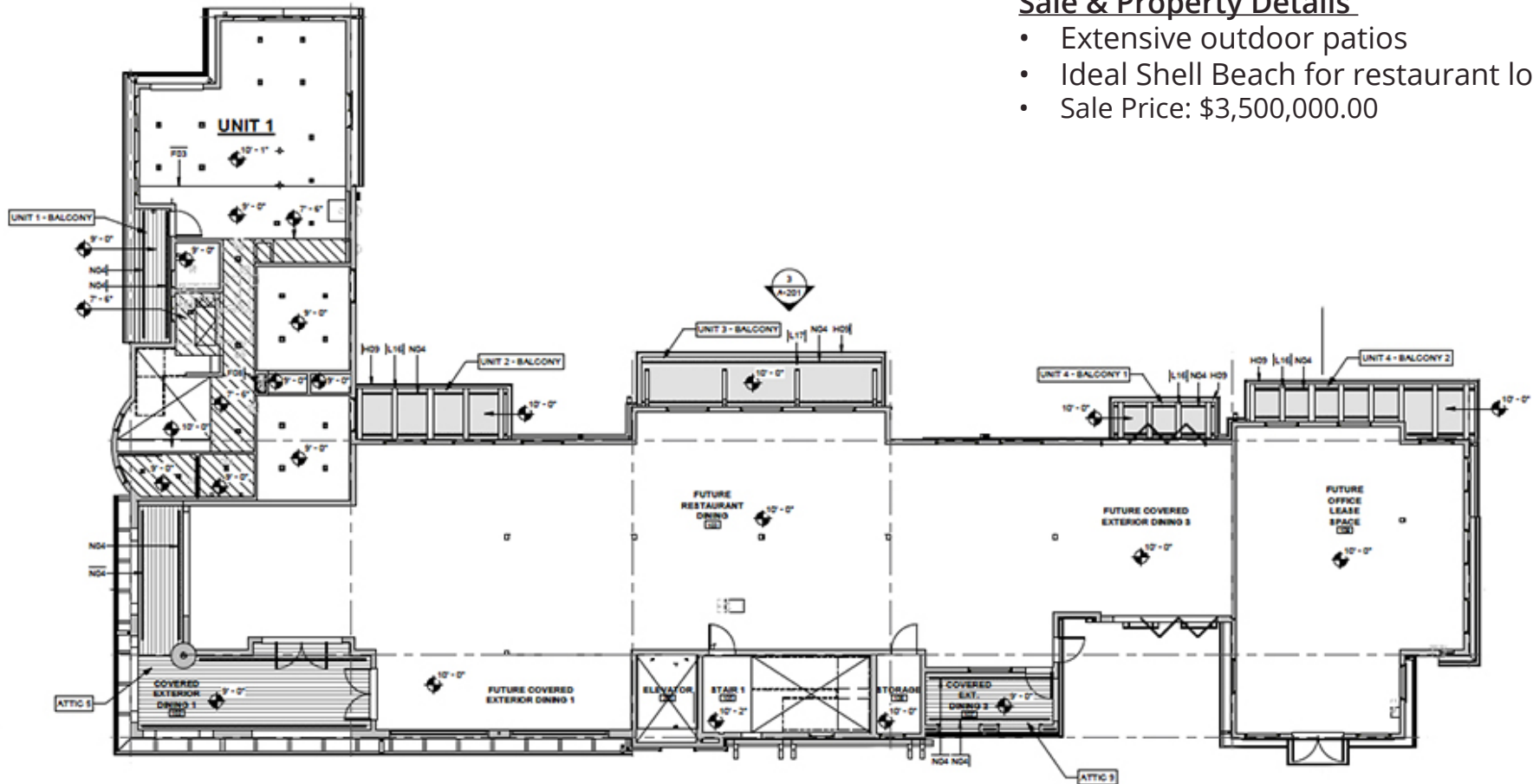
Information contained herein has been obtained from the owner of the property or from other sources deemed reliable. We have no reason to doubt its accuracy, but we do not guarantee it.

FOR SALE

401 Shell Beach Rd. | Pismo Beach, CA

Sale & Property Details

- Extensive outdoor patios
- Ideal Shell Beach for restaurant location
- Sale Price: \$3,500,000.00



Floor Plan- First Floor

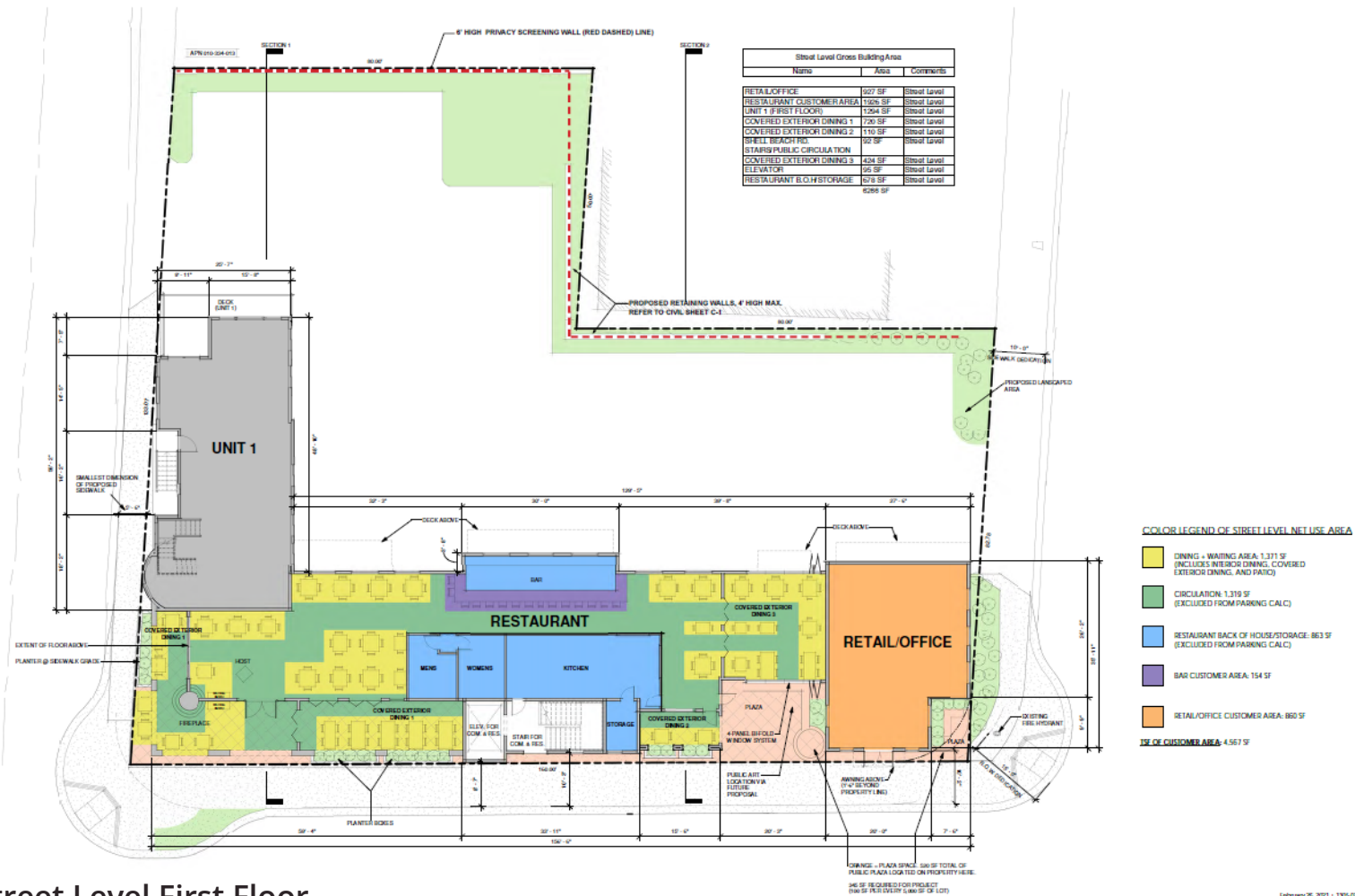
Chris Garner
805.928.2800 ext. 104
CGarner@PacificaCRE.com
Lic #01010310

PO Box 250 | Santa Maria, CA 93456 | PacificaCommercialRealty.com



Information contained herein has been obtained from the owner of the property or from other sources deemed reliable. We have no reason to doubt its accuracy, but we do not guarantee it.

FOR SALE 401 Shell Beach Rd. | Pismo Beach, CA



Street Level First Floor

February 26, 2021 | 1305-02-001

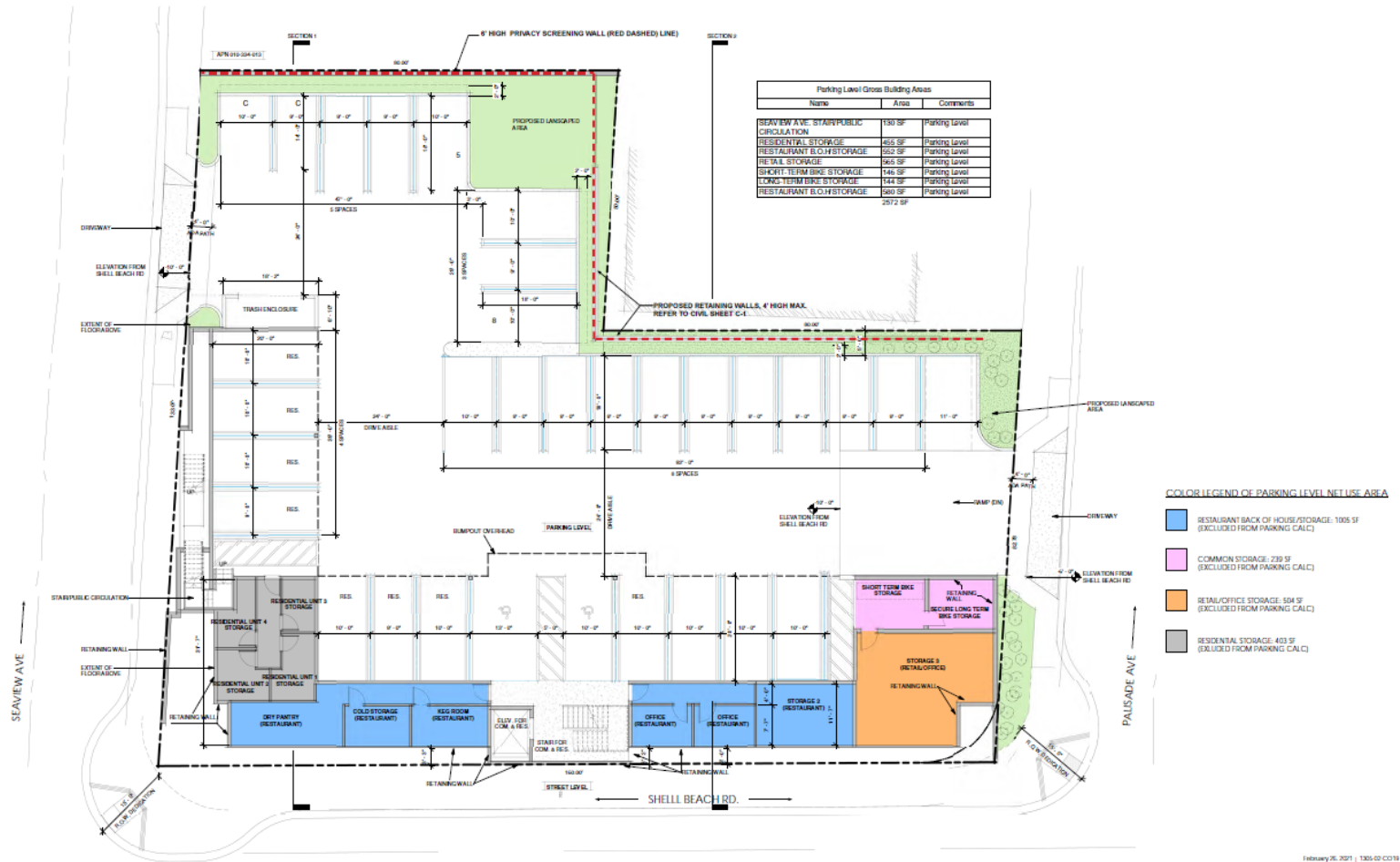
Chris Garner
 805.928.2800 ext. 104
 CGarner@PacificaCRE.com
 Lic #01010310

PO Box 250 | Santa Maria, CA 93456 | PacificaCommercialRealty.com



Information contained herein has been obtained from the owner of the property or from other sources deemed reliable. We have no reason to doubt its accuracy, but we do not guarantee it.

FOR SALE 401 Shell Beach Rd. | Pismo Beach, CA



Site Plan & Parking Level Plan

February 26, 2021 | 1305-02-C019

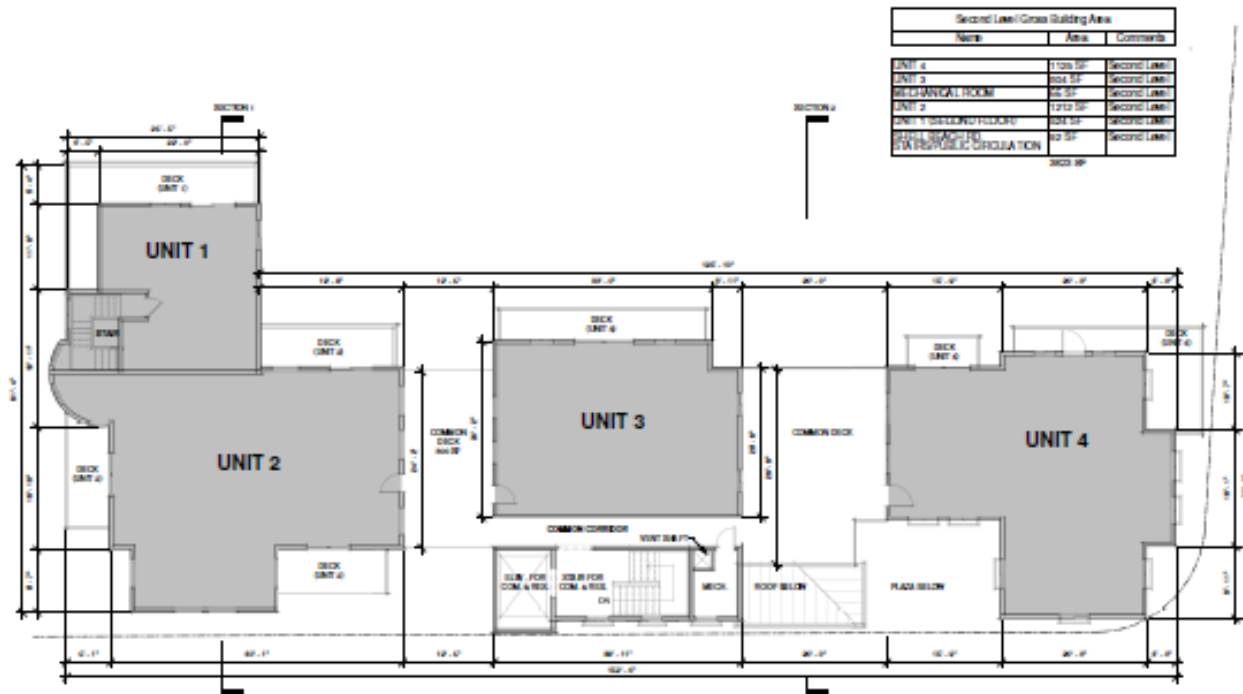
Chris Garner
 805.928.2800 ext. 104
 CGarner@PacificaCRE.com
 Lic #01010310

PO Box 250 | Santa Maria, CA 93456 | PacificaCommercialRealty.com



Information contained herein has been obtained from the owner of the property or from other sources deemed reliable. We have no reason to doubt its accuracy, but we do not guarantee it.

FOR SALE 401 Shell Beach Rd. | Pismo Beach, CA



Second Level Floor Plan

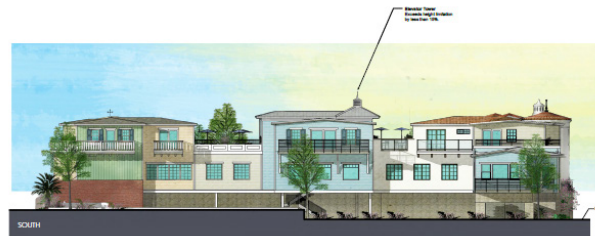
Chris Garner
 805.928.2800 ext. 104
 CGarner@PacificaCRE.com
 Lic #01010310

PO Box 250 | Santa Maria, CA 93456 | PacificaCommercialRealty.com



Information contained herein has been obtained from the owner of the property or from other sources deemed reliable. We have no reason to doubt its accuracy, but we do not guarantee it.

FOR SALE 401 Shell Beach Rd. | Pismo Beach, CA



BUILDING HEIGHT
 The height limitation for this site is 35' 0\"/>



FOR SALE

401 Shell Beach Rd. | Pismo Beach, CA



Chris Garner
805.928.2800 ext. 104
CGarner@PacificaCRE.com
Lic #01010310

PO Box 250 | Santa Maria, CA 93456 | PacificaCommercialRealty.com



Information contained herein has been obtained from the owner of the property or from other sources deemed reliable. We have no reason to doubt its accuracy, but we do not guarantee it.

FOR SALE

401 Shell Beach Rd. | Pismo Beach, CA



Chris Garner
805.928.2800 ext. 104
CGarner@PacificaCRE.com
Lic #01010310

PO Box 250 | Santa Maria, CA 93456 | PacificaCommercialRealty.com



Information contained herein has been obtained from the owner of the property or from other sources deemed reliable. We have no reason to doubt its accuracy, but we do not guarantee it.

FOR SALE

401 Shell Beach Rd. | Pismo Beach, CA



Chris Garner
805.928.2800 ext. 104
CGarner@PacificaCRE.com
Lic #01010310

PO Box 250 | Santa Maria, CA 93456 | PacificaCommercialRealty.com



Information contained herein has been obtained from the owner of the property or from other sources deemed reliable. We have no reason to doubt its accuracy, but we do not guarantee it.

FOR SALE

401 Shell Beach Rd. | Pismo Beach, CA



Chris Garner
805.928.2800 ext. 104
CGarner@PacificaCRE.com
Lic #01010310

PO Box 250 | Santa Maria, CA 93456 | PacificaCommercialRealty.com



Information contained herein has been obtained from the owner of the property or from other sources deemed reliable. We have no reason to doubt its accuracy, but we do not guarantee it.

FOR SALE

401 Shell Beach Rd. | Pismo Beach, CA



Chris Garner
805.928.2800 ext. 104
CGarner@PacificaCRE.com
Lic #01010310

PO Box 250 | Santa Maria, CA 93456 | PacificaCommercialRealty.com



Information contained herein has been obtained from the owner of the property or from other sources deemed reliable. We have no reason to doubt its accuracy, but we do not guarantee it.