



FOR LEASE

INDUSTRIAL OUTDOOR STORAGE YARD

3108 Blevins Road Whites
Creek, TN 37189

PRESENTED BY:

MATHEW GRAVES

C: 909.633.4818

O: 615.671.4544 x5

mathew.graves@svn.com



**All SVN® Offices are
Independently Owned and Operated**



±2.0 Acres



SP Zoning

PRICING OVERVIEW

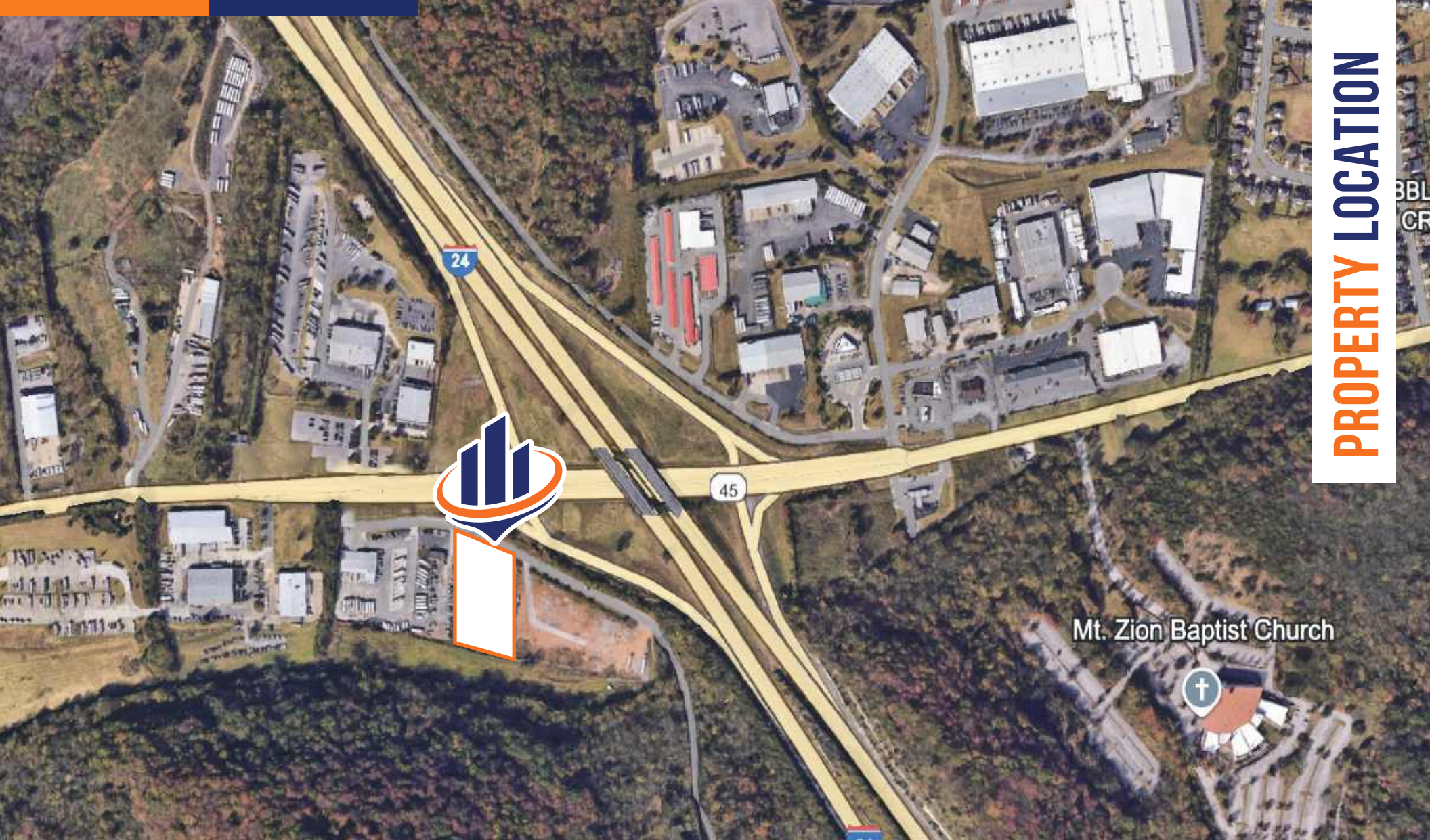
PRICE:	\$10,000 Per Month
LOT SIZE:	±2.0 Acres
ZONING:	SP
MARKET:	Whites Creek
PARCEL#:	040-00-0-060-00

PROPERTY HIGHLIGHTS

- Immediate Access to Interstate 24
- Prime Location for Trucking
- Graveled, Lit, & Secured Yard

PROPERTY OVERVIEW

This premier industrial outdoor storage yard offers immediate access to Interstate 24 via Exit 40 (Old Hickory Blvd) and is strategically located near key cities and transportation hubs. With a daily traffic count of 67,260 vehicles on I-24, the property is approximately 9 miles from Downtown Nashville, 35 miles from Clarksville, 40 miles from Murfreesboro, 30 miles from Mount Juliet, and 18 miles from Nashville International Airport (BNA). Zoned under a Specific Plan permitting CS (Commercial Service) and IWD (Industrial Warehousing/Distribution) uses. The site is fully gravelled, well-lit, and securely fenced, making it an ideal turnkey solution for various commercial and industrial operations.



PROPERTY LOCATION



Mt. Zion Baptist Church

3108 Blevins Road Whites Creek, TN 37189

- Downtown Nashville:** Approximately 9 miles
- Clarksville, TN:** Approximately 35 miles
- Murfreesboro, TN:** Approximately 40 miles
- Mount Juliet, TN:** Approximately 30 miles
- Nashville International Airport (BNA):** Approximately 18 miles

- Dickson, TN:** 45 miles
- Spring Hill, TN:** 42 miles
- Portland, TN:** 30 miles

MATHEW GRAVES

C: 909.633.4818 | O: 615.671.4544 x5
mathew.graves@svn.com