



Stonecreek Pointe



11201 NORTH TATUM BLVD | PHOENIX, AZ 85028

CBRE

Stonecreek Pointe

is a beautiful three-story, ±110,766 SF, Class A office building. Situated on ±5 acres, the property overlooks Stonecreek Golf Course and offers a contemporary creative office environment with spectacular panoramic views of Camelback Mountain, Piestawa Peak, and the Phoenix Mountains Preserve.

The property is located in the heart of one of Metro Phoenix's executive housing communities and is just a 5-minute drive from the Paradise Valley Mall redevelopment opening in 2024.

New upgrades completed at Stonecreek Pointe include:

- New outdoor tenant amenity patio on the Stonecreek Golf Course
- Upgrades to existing interior tenant amenity lounge



PROPERTY FEATURES



Walk out access to the golf course



Balcony extensions on many suites



Large, functional ±37,000 SF floor plates



Prominent window lines



Activated and contemporary lobby



High-end creative office finishes



Monument signage on Tatum Blvd



New tenant lounge with comfortable seating areas, streaming news, and complimentary coffee and Wi-Fi



AVAILABLE SPEC SUITES

Suite 144

±1,909 SF

Suite 255

±3,365 SF

Suite 335

±1,809 SF

Suite 340

±1,069 SF

EXPENSES

Base Year

TIs

Negotiable

PARKING

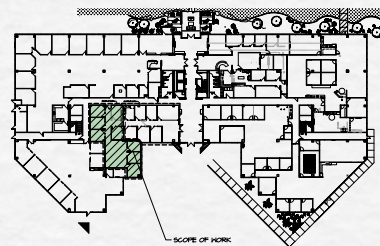
3.9/1,000 offering a combination of surface and structured parking.

- + Covered Reserved Garage: \$65.00/Month
- + Covered Reserved Surface: \$50.00/Month

Suite 144

±1,909 SF

\$34.00/SF full service

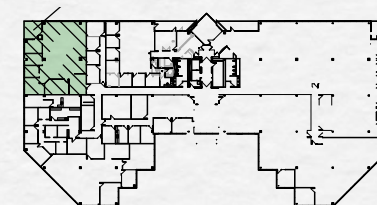
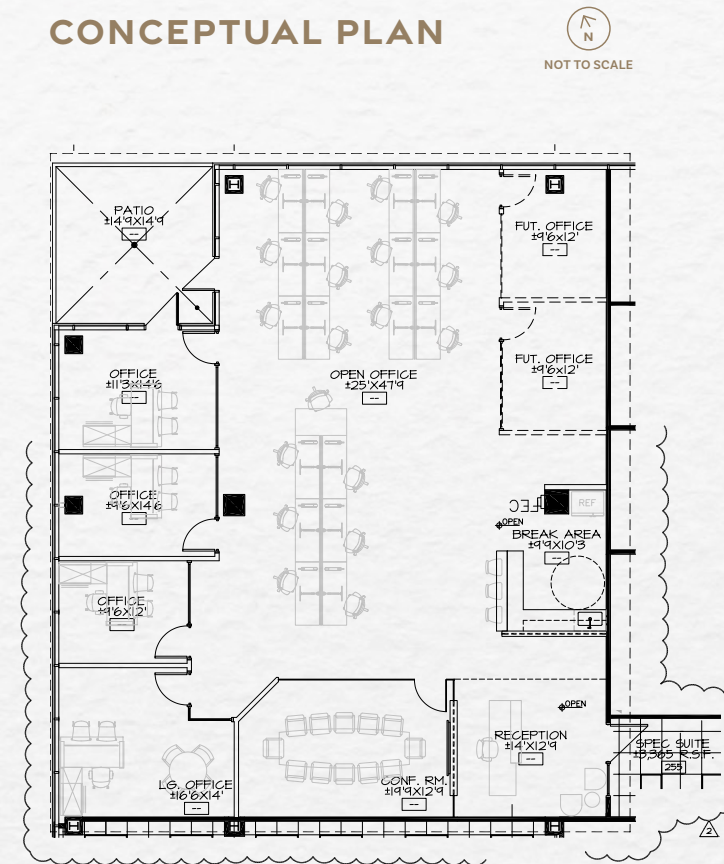


Suite 255

±3,365 SF

\$34.00/SF full service

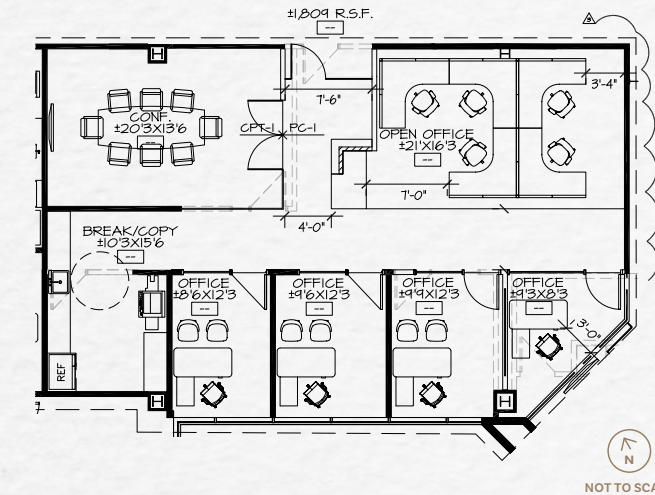
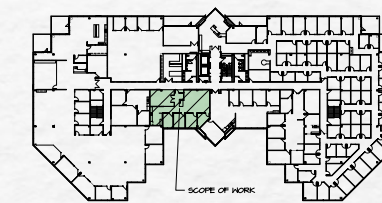
CONCEPTUAL PLAN



Suite 335

±1,809 SF

\$34.00/SF full service

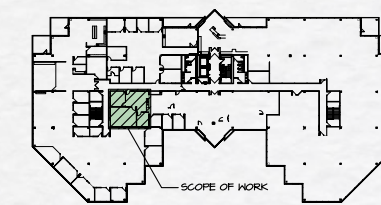
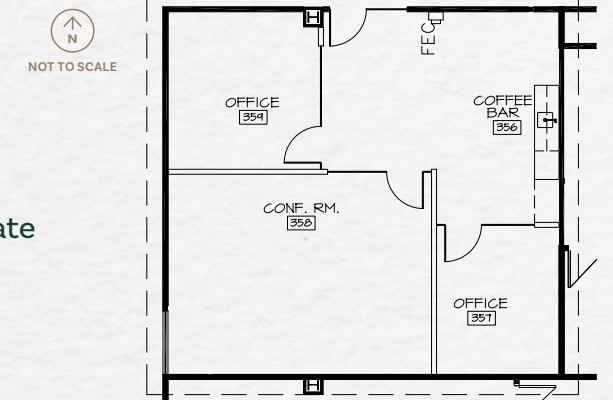


Suite 340

±1,069 SF

\$2,999 per month full service

Suite comes with furniture in private offices and reception area.



Superior Location

Stonecreek Pointe's location offers a full array of mixed-use amenities:

STONECREEK GOLF COURSE

18-hole championship golf course & clubhouse

PARADISE VALLEY GATEWAY

Adjacent to Paradise Valley Gateway retail center featuring Albertson's, Bed Bath & Beyond, Chase Bank, Walgreens, Five Guys, Panera Bread, Ross, Staples, Starbucks, and Z-Tejas Grill.



ABUNDANT RETAIL

±2.3M SF of combined amenities in eight retail centers nearby, including the ±1.1M SF Paradise Valley Mall, which is anchored by Macy's, Dillard's, Sears, JCPenney, and Costco. Convenient access to Embassy Suites Hotel, LA Fitness, Fry's Marketplace, Orange Theory Gym, Trader Joe's, and Whole Foods.

CONVENIENT FREEWAY ACCESS

The property is conveniently located in the Paradise Valley, Tatum Boulevard corridor, just five minutes from SR-51 and 10 minutes from the Loop 101 freeway.



CLICK TO VIEW THE
VIRTUAL DRONE TOUR



EXPLORE THE AREA
WITH AERIALSPHERE





Stonecreek Pointe

11201 NORTH TATUM BLVD | PHOENIX, AZ 85028

LUKE WALKER

Senior Vice President

+1 602 735 1711 | luke.walker@cbre.com

JAMIE SWIRTZ

Senior Vice President

+1 602 735 5630 | jamie.swirtz@cbre.com

NORTH BEACON CAPITAL, LLC
ASSET MANAGEMENT

CBRE

© 2025 CBRE, Inc. All rights reserved. This information has been obtained from sources believed reliable, but has not been verified for accuracy or completeness. You should conduct a careful, independent investigation of the property and verify all information. Any reliance on this information is solely at your own risk. All marks displayed on this document are the property of their respective owners, and the use of such logos does not imply any affiliation with or endorsement of CBRE. Photos herein are the property of their respective owners. Use of these images without the express written consent of the owner is prohibited. PMStudio_August2025