

OFFERING MEMORANDUM

# 1521 NORTH BROADWAY

*A vacant professional retail/office property  
located in Santa Ana, California*



SANTA ANA, CA 92706

**km** Kidder  
Mathews

# TABLE OF CONTENTS

01

OFFERING  
SUMMARY

02

LOCATION  
OVERVIEW

03

PROPERTY  
OVERVIEW

04

COMPARABLES

05

OFFERING  
PROCEDURES

*Exclusively  
Listed by*

**JON MITCHELL**  
Senior Vice President  
949.557.5021  
jon.mitchell@kidder.com  
LIC N° 01227852

**KIDDER.COM**



The information contained in the following Marketing Brochure is proprietary and strictly confidential. It is intended to be reviewed only by the party receiving it from Kidder Mathews and should not be made available to any other person or entity without the written consent of Kidder Mathews.

This Marketing Brochure has been prepared to provide summary, unverified information to prospective purchasers, and to establish only a preliminary level of interest in the subject property. The information contained herein is not a substitute for a thorough due diligence investigation. Kidder Mathews has not made any investigation, and makes no warranty or representation, with respect to the income or expenses for the subject property, the future projected financial performance of the property, the size and square footage of the property and improvements, the presence or absence of contaminating substances, PCB's or asbestos, the compliance with State and Federal regulations, the physical condition of the improvements thereon, or the financial condition or business prospects of any tenant, or any tenant's plans or intentions to continue its occupancy of the subject property. The information contained in this Marketing Brochure has been obtained from sources we believe to be reliable; however, Kidder Mathews has not verified, and will not verify, any of the information contained herein, nor has Kidder Mathews conducted any investigation regarding these matters and makes no warranty or representation whatsoever regarding the accuracy or completeness of the information provided. All potential buyers must take appropriate measures to verify all of the information set forth herein.

This information has been secured from sources we believe to be reliable. We make no representations or warranties, expressed or implied, as to the accuracy of the information. References to square footage or age are approximate. Recipient of this report must verify the information and bears all risk for any inaccuracies.



# OFFERING SUMMARY

# *PRIME* COMMERCIAL OPPORTUNITY LOCATED IN MIDTOWN SANTA ANA

*As exclusive advisor and Listing Agent, Jonathan N. Mitchell is pleased to present the opportunity to acquire 1521 N Broadway (the “Property”), a property located in Santa Ana, CA.*

Welcome to 1521 N Broadway, an exceptional commercial property located in the heart of Santa Ana’s thriving Midtown District. Positioned just south of 17th Street and minutes from the 5 Freeway, this standalone building offers outstanding visibility, convenient access, and strong potential in one of the city’s most rapidly evolving corridors.

Previously operated as a dental office (currently vacant), the property is thoughtfully configured for medical, dental, or professional office use. The versatile layout features four treatment stations with existing plumbing and electrical connections, a spacious reception and lobby area, private doctor’s office, two bathrooms, kitchen/breakroom space, and secure gated parking with one handicap and seven spots. With six private rooms/offices, the flexible floor plan can accommodate a variety of professional or administrative uses.

Situated within the Midtown Specific Plan (SP3) and designated as an Opportunity Zone, this property aligns with Santa Ana’s long-term vision for economic revitalization and mixed-use growth, presenting excellent potential for owner-users, medical professionals, or investors seeking to modernize and capitalize on the area’s continued development.

Whether you are expanding your practice, launching a new business, or investing in a strategic redevelopment corridor, this property delivers location, functionality, and future opportunity in the center of Santa Ana’s flourishing Midtown community.

Buyer to verify zoning, permitted uses, and Opportunity Zone benefits with the City of Santa Ana.

Please see the link below for more information regarding the Midtown Specific Plan (SP3).

→ [VIEW MIDTOWN SPECIFIC PLAN \(SP3\)](#)







# LOCATION OVERVIEW



# SANTA ANA'S MARKET IS RIPE FOR INVESTMENT

*Santa Ana is a city situated in Orange County and serves as the county seat.*

Santa Ana is located in the Los Angeles metropolitan area and is positioned along the Santa Ana River. The city is located near major regional transportation routes including Interstate 5 and the State Route 55 and State Route 22 freeways. The landscape includes a downtown core with a historic district, government administrative centers, and various residential and commercial neighborhoods. Notable landmarks include the Bowers Museum, the Discovery Cube Orange County, and the MainPlace Mall.

The local economy is supported by a variety of sectors such as government, healthcare, and manufacturing. As the county seat, the city contains numerous municipal, county, and federal facilities. Additional economic activity is concentrated in the retail trade, professional services, and hospitality sectors. The city's infrastructure and centralized location within the county support a diverse range of commercial and industrial operations.

310,087

SANTA ANA  
POPULATION (2025)

\$93,774

CITY MEDIAN HOUSEHOLD  
INCOME (2025)

33.8

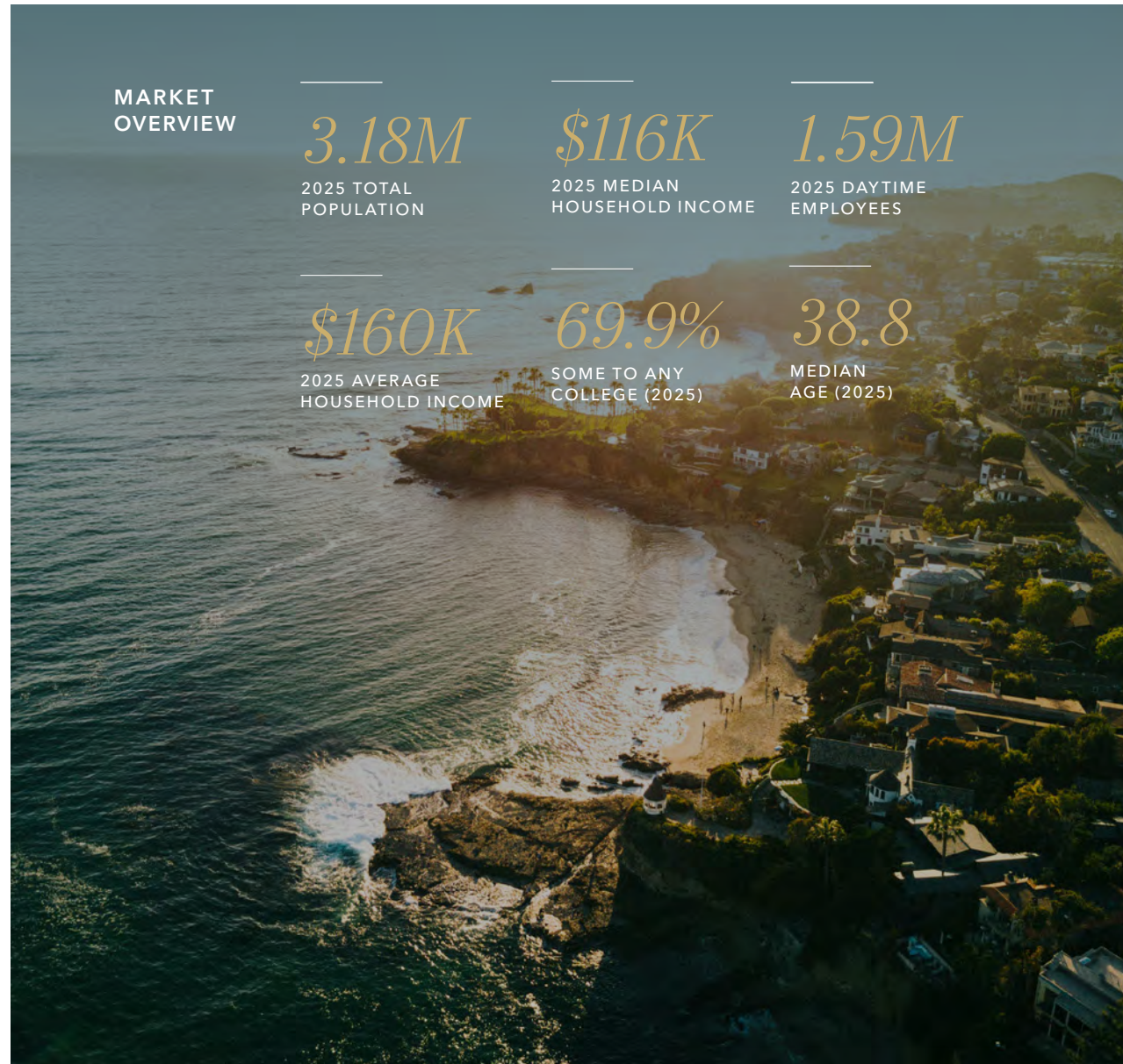
SANTA ANA  
MEDIAN AGE (2025)

## ORANGE COUNTY, CA

The Property is located in Orange County, one of the most desirable residential and commercial areas in Southern California. It is close to other major metropolitan areas and offers a high quality of life for its residents. Orange County has a diverse and affluent population with a high level of education and a strong corporate presence. The market has ten Fortune 1,000 companies in various sectors such as technology, tourism, healthcare and financial services. The market also has excellent demographics, a robust economy, top-notch educational institutions and attractive amenities that create a steady demand for multifamily housing in the long term.

### DIVERSE ECONOMIC DRIVERS

- High Tech/Gaming
- Life Sciences
- Action Sports
- Healthcare
- Tourism
- Business & Professional Services
- Green Economy
- Quick Serve Restaurants

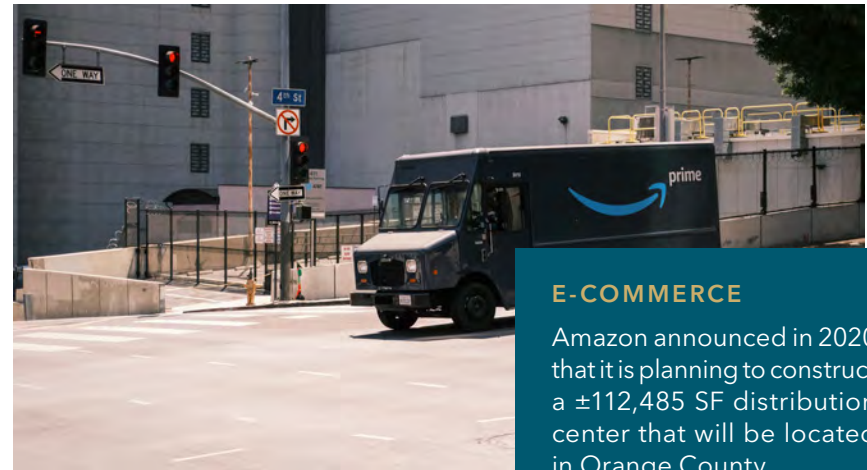


## ORANGE COUNTY GROWTH



### TOURISM

The Walt Disney Company announced in 2024 one of its largest expansions of Disneyland in over 20 years.



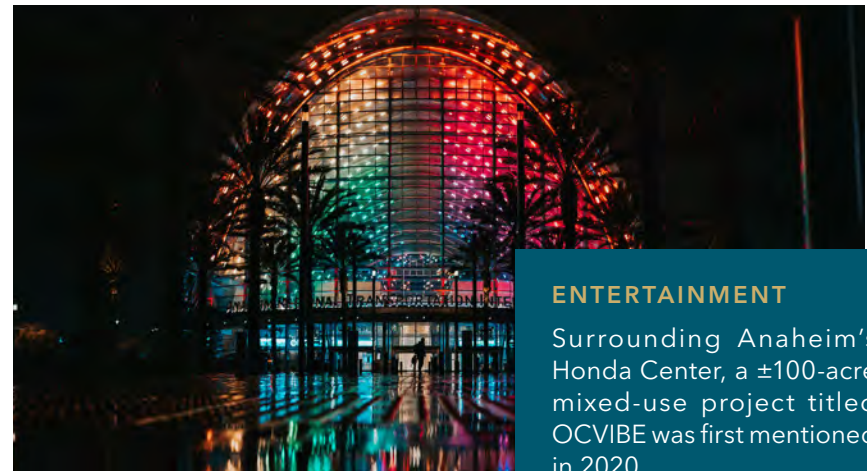
### E-COMMERCE

Amazon announced in 2020 that it is planning to construct a ±112,485 SF distribution center that will be located in Orange County.



### DEFENSE

Anduril Industries, a government defense contractor, announced in 2021 a large lease was signed in Orange County.



### ENTERTAINMENT

Surrounding Anaheim's Honda Center, a ±100-acre mixed-use project titled OCVIBE was first mentioned in 2020.



# PROPERTY OVERVIEW

# PROPERTY *DESCRIPTION*

*1521 N Broadway, a vacant professional retail/office property located in Santa Ana, California. The property is located near multiple retail and recreation options.*

## PROPERTY HIGHLIGHTS

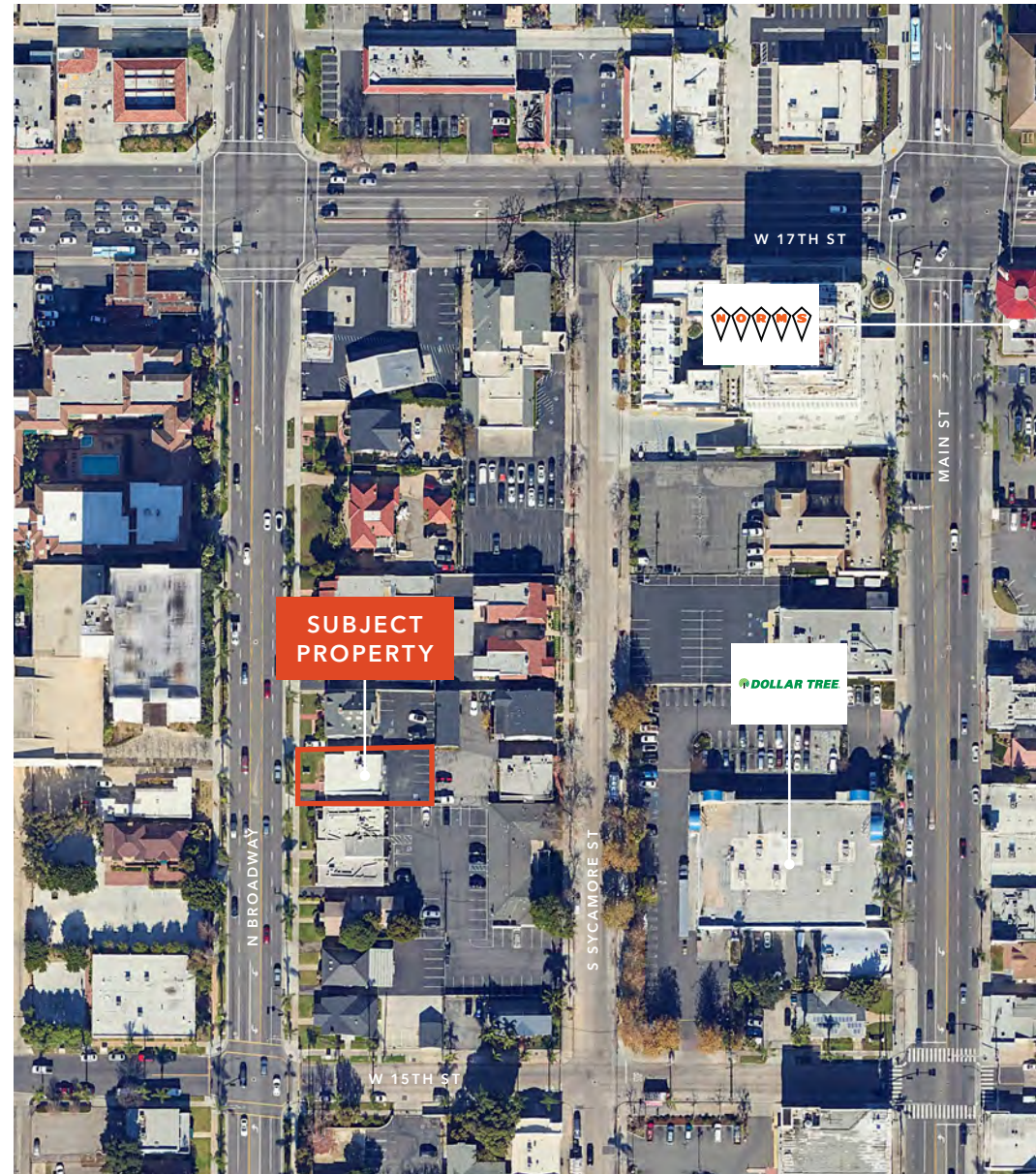
- Building Size: ±1,875 SF
- Land Size: ±6,098 SF (±0.140 AC)
- Year Built: 1924
- Parking Ratio: 4.3/1,000
- Zoning: Professional
- High Foot Traffic
- APN/Parcel ID: 005-152-07
- Price/SF: \$499.73
- Vacant Owner-User Opportunity

**\$937,000**

PRICE

**+3 MIN**

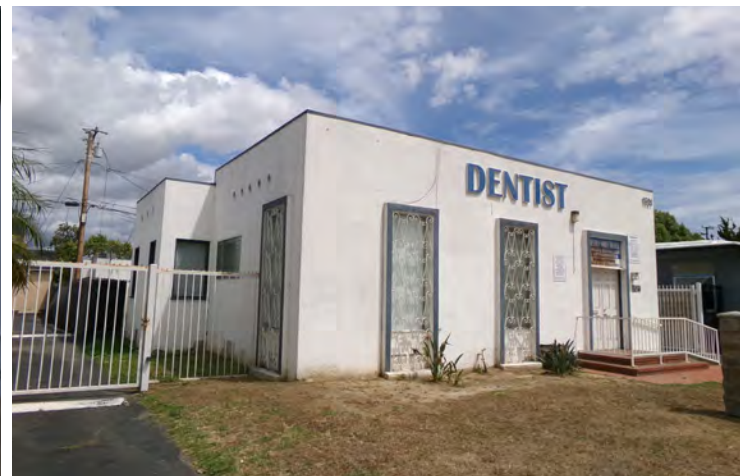
DRIVE TO BOWERS MUSEUM



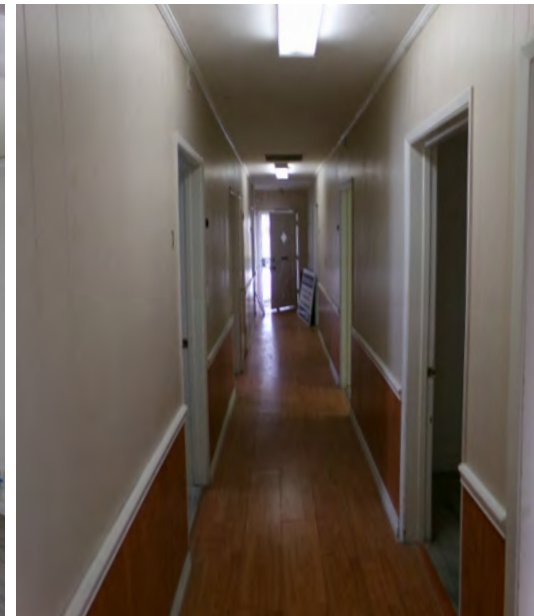
# PROPERTY OVERVIEW



# EXTERIOR PHOTOS



# INTERIOR PHOTOS

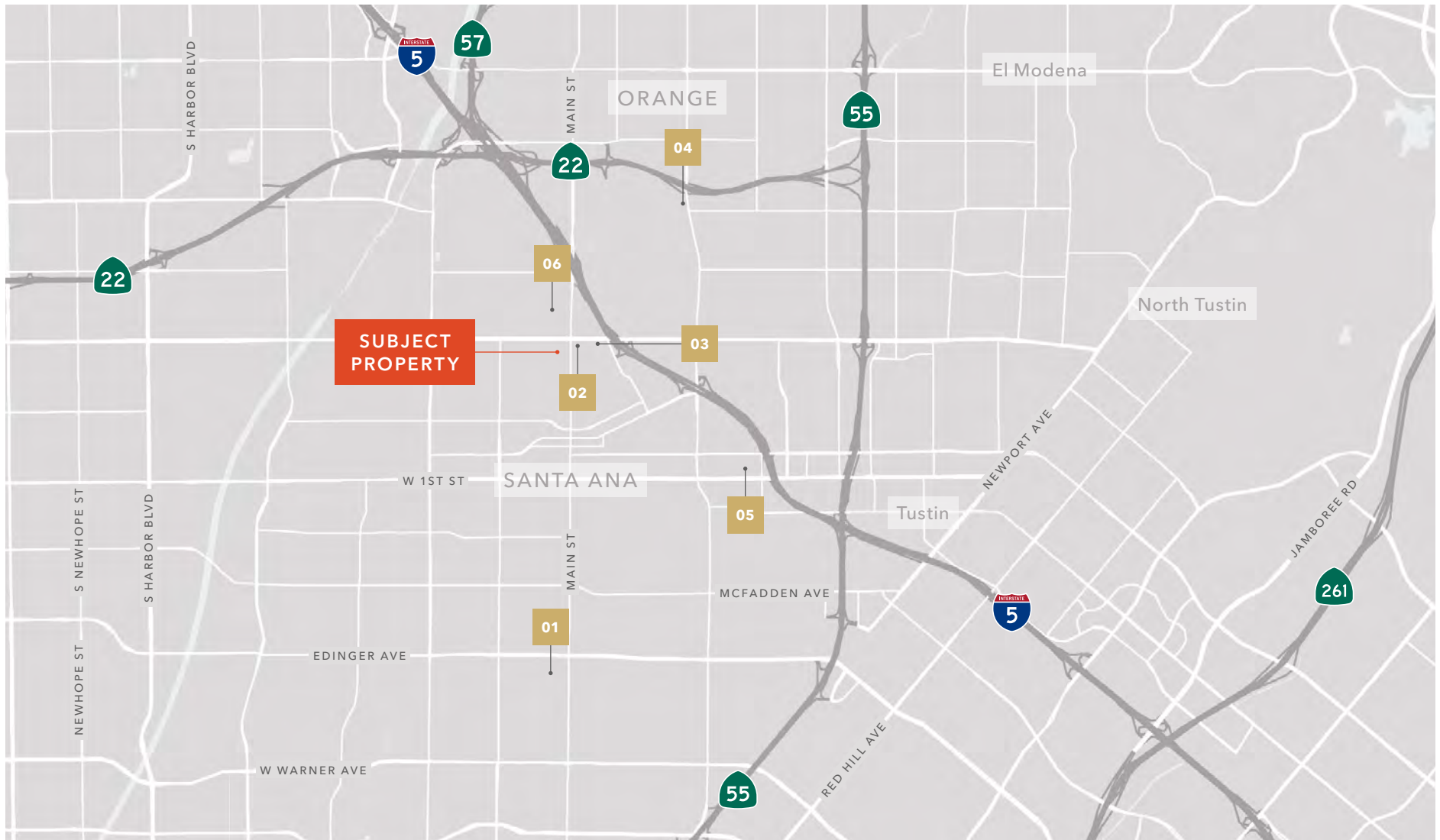




# COMPARABLES

*Section 04*

# SALE COMPARABLES



## SALE COMPARABLES

	Address	Sale Date	Sale Price	Price/SF	RBA (SF)	Land Area	Built/Renovated
01	<b>1626 S BROADWAY</b> Santa Ana, CA 92707	Pending	\$970,000	\$626.21	1,549 SF	5,663 SF	1963
02	<b>1602 N BUSH ST</b> Santa Ana, CA 92701	1/21/2025	\$887,265	\$427.60	2,075 SF	6,708 SF	1948
03	<b>1618-1620 N FRENCH ST</b> Santa Ana, CA 92701	1/7/2025	\$1,000,000	\$438.60	2,280 SF	7,087 SF	1957
04	<b>2710 N GRAND AVE</b> Santa Ana, CA 92705	12/23/2024	\$1,300,000	\$406.25	3,200 SF	13,749 SF	1972
05	<b>1630 N PALM ST</b> Santa Ana, CA 92701	10/22/2024	\$1,969,500	\$419.22	4,698 SF	18,295 SF	1974
06	<b>2014 N BROADWAY</b> Santa Ana, CA 92706	3/29/2024	\$1,540,000	\$464.27	3,317 SF	13,068 SF	1961

Buyer is solely responsible for independently verifying the information contained in this document. Any reliance on it is entirely at your own risk.



# OFFERING PROCEDURES

# OFFERING PROCEDURES

*Prospective investors wishing to make an offer are requested to submit —*

- RIPA or AIR contracts
- Letter of intent
- Resume and/or business letter indicating recent or current assets owned and purchased
- Transaction references
- Banking references
- Source of equity for acquisition

## INTEREST OFFERED

100% fee simple interest.

## TERMS

The Property is being offered on an all-cash basis with new financing available.

## SALE CONDITIONS

Property is being offered in an AS-IS, where-is condition with all faults, if any, and without representations or warranties of any kind or nature, expressed or implied, written or oral.

**Buyer is solely responsible for independently verifying the information contained in this document. Any reliance on it is entirely at your own risk. Loan information is subject to change.**

## PROPERTY TOURS

Prospective investors are encouraged to visit the subject property prior to submitting an offer. Please DO NOT contact on-site management or staff without prior approval. All property showings are by appointment only. Contact Jonathan Mitchell at Kidder Mathews.

### JON MITCHELL

Senior Vice President

949.557.5021

jon.mitchell@kidder.com

LIC N° 01227852



*Exclusively listed by*

**JON MITCHELL**  
Senior Vice President  
949.557.5021  
jon.mitchell@kidder.com  
LIC N° 01227852

[KIDDER.COM](http://KIDDER.COM)

