



Prime Retail Opportunities On Lincoln Road

Join New Tenants Coming Soon **edikt-ed**



901-939 LINCOLN ROAD | MIAMI BEACH, FLORIDA 33139

CBRE

PROPERTY OVERVIEW

Take Your Place On Lincoln Road

Situated in the heart of Miami Beach's most prominent retail corridor, 901–939 Lincoln Road offers unmatched visibility amid world-renowned brands such as Apple, Nike, Lululemon, and Alo Yoga. The site is just steps from the Miami Beach Convention Center, the Fillmore Miami Beach, the New World Symphony, and SoundScape Park.

The ±4,650 SF space (formerly Pink) features ±39 feet of frontage on Lincoln Road, providing premier visibility to both pedestrian and vehicular traffic. Two additional retail opportunities of ± 1,300 SF and ± 2,800 SF are also available on the middle and west side the property, both fronting Lincoln Road. With a 97 Walk Score and more than 10 million annual visitors, Lincoln Road remains one of South Florida's most iconic and high-performing retail destinations.



UNMATCHED LOCATION

Prime Visibility and Heavy Foot Traffic

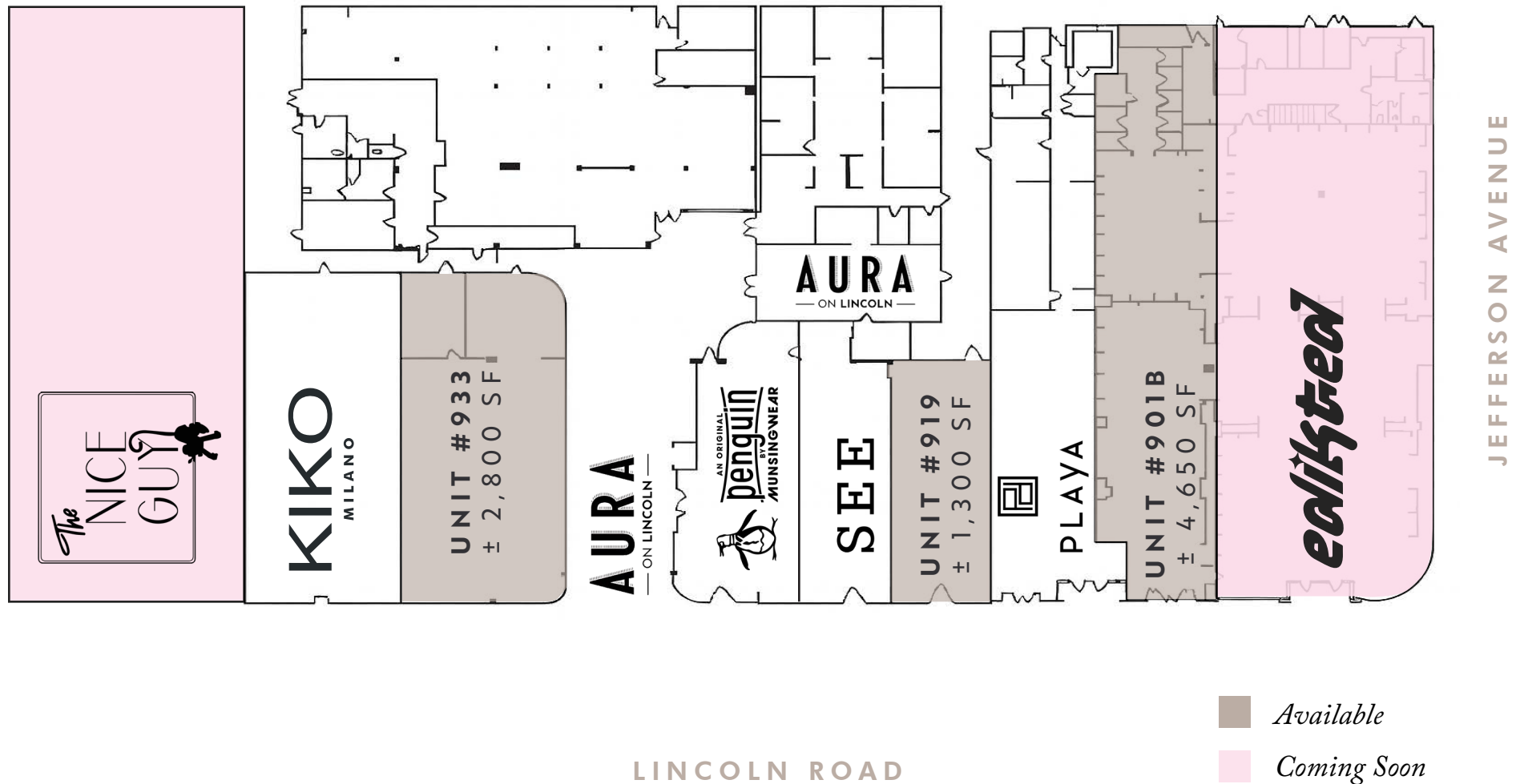
LOCATION HIGHLIGHTS

- + Surrounded by luxury residences, top-tier retail, and destination hospitality venues
- + Metered street parking, surface lot, and nearby garage parking
- + Frontage On Lincoln Road's best corner, Between Jefferson & Michigan Avenue
- + Easy accessibility to major roadways, including Alton Road, Collins Ave & Washington Ave



Site Plan

901-939 LINCOLN ROAD | MIAMI BEACH, FLORIDA 33139



Unit #901B

901-939 LINCOLN ROAD | MIAMI BEACH, FLORIDA 33139

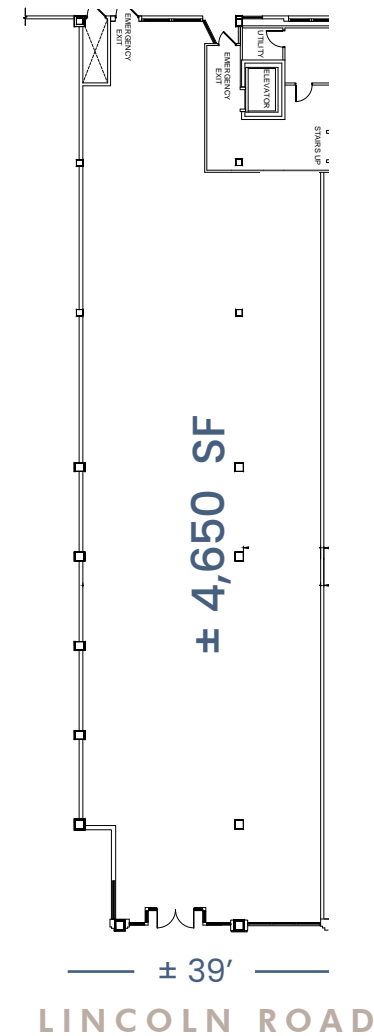


AVAILABILITY

± 4,650 SF

FRONTAGE

± 39' on Lincoln Road



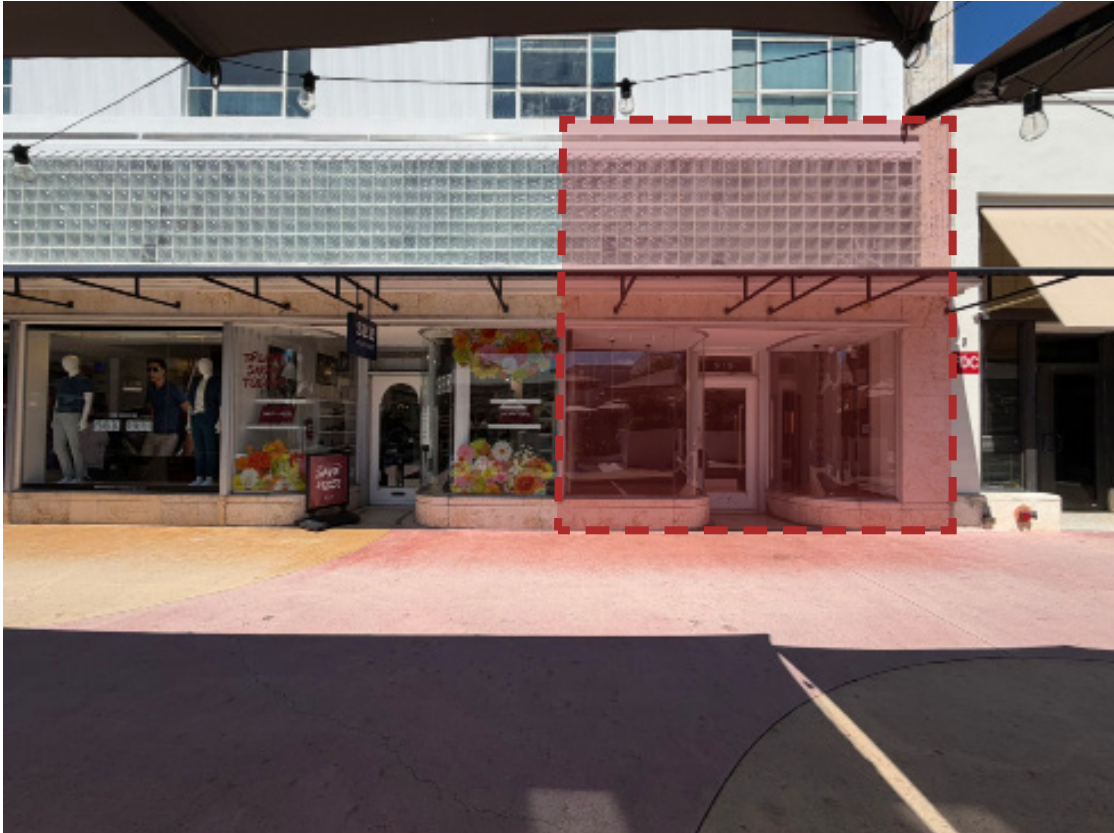
Unit #901B

901-939 LINCOLN ROAD | MIAMI BEACH, FLORIDA 33139



Unit #919

901-939 LINCOLN ROAD | MIAMI BEACH, FLORIDA 33139

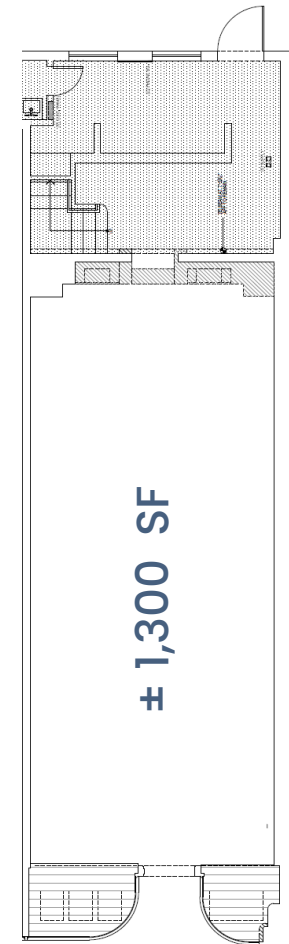


AVAILABILITY

± 1,300 SF

FRONTAGE

± 17' on Lincoln Road



— ± 17' —

LINCOLN ROAD

Unit #919

901-939 LINCOLN ROAD | MIAMI BEACH, FLORIDA 33139



Unit #933

901-939 LINCOLN ROAD | MIAMI BEACH, FLORIDA 33139

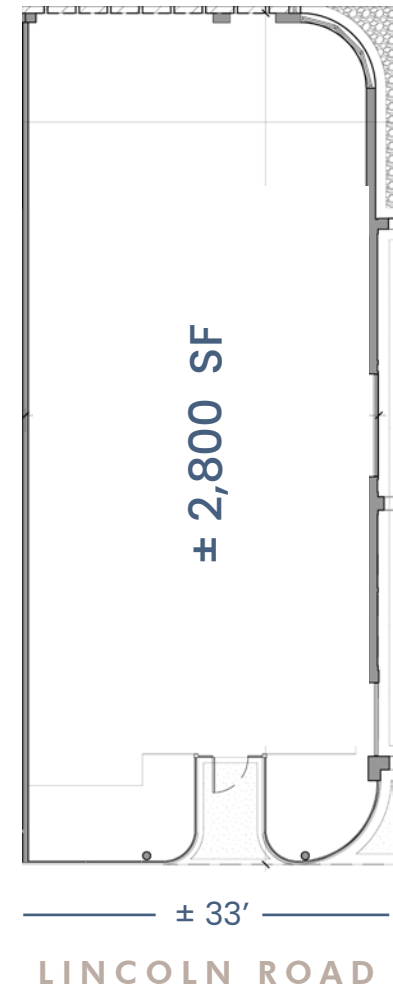


AVAILABILITY

± 2,800 SF

FRONTAGE

± 33' on Lincoln Road



Unit #933

901-939 LINCOLN ROAD | MIAMI BEACH, FLORIDA 33139



LINCOLN ROAD

Retail Hub In Miami Beach

Lincoln Road is Miami Beach's iconic eight-block pedestrian promenade, blending world-class shopping, dining, and culture. Designed by legendary architect Morris Lapidus, the corridor attracts over 10 million annual visitors and is home to more than 200 retailers, restaurants, and art galleries. With over 200 retailers, restaurants, and art galleries—including global brands like Apple, Nike, and Lululemon—Lincoln Road offers unmatched visibility in one of America's top high-street retail destinations. Surrounded by lush landscaping, public art, and historic architecture, it's where commerce meets culture in true Miami style.

8 Blocks

Washington-Alton

11 Million

Annual Visitors (USA + Int'l)

23K Visitors Daily

200+

Businesses

177 Retailers & 79 Restaurants



Area Demographics

| | 3 Miles | 5 Miles | 10 Miles |
|--------------------------|-----------|-----------|-----------|
| Population | 48,246 | 121,312 | 727,544 |
| Daytime Population | 86,021 | 193,234 | 881,606 |
| Median Age | 43.9 | 38.6 | 41.0 |
| Average Household Income | \$139,157 | \$134,919 | \$105,377 |



Home to Established Brands



ZARA



ALDO



 **ATHLETA**

for all mankind®



MILÄ

PANDORA



JO MALONE
LONDON

MANGO

Brandy Melville



ORO



Ray-Ban



— SUSHI • BAR —
NEGRONI
— CAFE • BISTRO —



Quidres
Carne de Res



ANTHROPOLOGIE

GAP

DISCOVER MIAMI BEACH



- › *Premier Global Destination*
- › *High-Density Foot Traffic*
- › *Over 10 Million Annual Visitors*
- › *International Brand Presences*
- › *Strong Leasing Demand From National Tenants*

Miami Beach is a prominent tourist destination with rich culture, art and history. Miami Beach spans seven miles of world-renowned beaches with vibrant parks, golf courses, and cultural destinations. It draws a diverse mix of tourists, locals, and global tastemakers year-round. The economic boom has brought refurbishment to the Art Deco Historic District, modernized transportation infrastructure and a new way of life that features arts, culture, sports, and entertainment.

This area boasts one of the strongest retail markets in Miami-Dade, driven by high visitor traffic and a mix of local and seasonal residents. Investors are increasingly focused on mixed-use properties, fueled by strong demographics, robust tourism, and ongoing urban-core redevelopment.



901 - 939 LINCOLN ROAD

Lease the Corner of Miami Beach's Most Iconic Block

DREW SCHAUL

+1 305 742 5112

drew.schaul@cbre.com

MICHAEL BETANCOURT

+1 786 356 1021

michael.betancourt@cbre.com

ALEX CESAR

+1 646 246 6007

alex.cesar@cbre.com

JORDAN LANDMAN

+1 305 428 5017

jordan.landman@cbre.com

© 2025 CBRE, Inc. All rights reserved. This information has been obtained from sources believed reliable, but has not been verified for accuracy or completeness. You should conduct a careful, independent investigation of the property and verify all information. Any reliance on this information is solely at your own risk. CBRE and the CBRE logo are service marks of CBRE, Inc. All other marks displayed on this document are the property of their respective owners, and the use of such logos does not imply any affiliation with or endorsement of CBRE.

CBRE