



# OFFICE SPACE FOR LEASE

## 5550 MEADOWBROOK COURT ROLLING MEADOWS, IL 60008

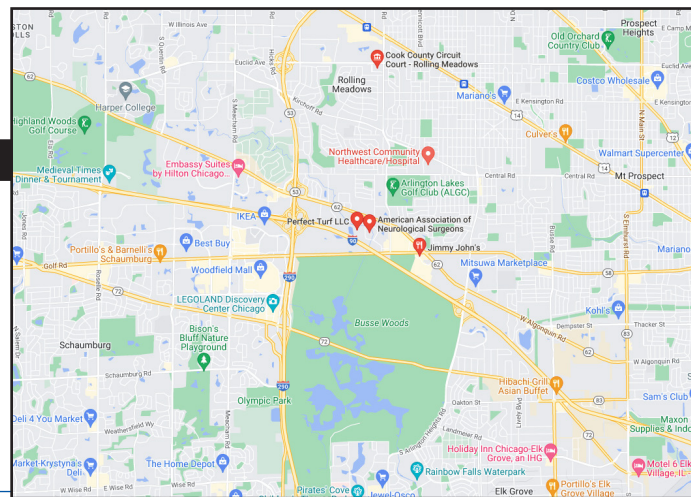


### BUILDING FEATURES:

- 4,270-9,660 SF Office Space Available
- Located between Algonquin Rd & Golf Rd
- Minutes from RT 53 & I-90
- Tenant controlled HVAC & 24-hour access
- Comcast high-speed internet and cable available
- Beautifully landscaped
- Excellent windowline & High Ceilings
- Full height Glass & Glass Transoms Throughout
- Zoned M-1 Business Park
- Suites have Skylights & Full Height Glass
- Strong Ownership by the American Association of Neurological Surgeons
- See [www.chicagolandcommercial.com](http://www.chicagolandcommercial.com) for 3-D Virtual Tours of each space!
- Asking Rent: \$14.75-\$16.50 PSF Modified Gross

### AVAILABLE SPACE:

SUITE	SIZE	SUITE NOTES	Available
120	4,270 SF	Private Offices, high ceilings, open areas, kitchen, skylights & more!	ASAP
210	5,390 SF		ASAP
120 & 210	9,660 SF		



### FOR MORE INFORMATION:

**RANDY OLCZYK**  
 President/Principal  
 Direct: 847.246.9611  
[randy@chicagolandcommercial.com](mailto:randy@chicagolandcommercial.com)

**RAY OKIGAWA**  
 Senior Vice President  
 Direct: 847.246.9632  
[ray@chicagolandcommercial.com](mailto:ray@chicagolandcommercial.com)



4811 Emerson Ave Suite 112, Palatine, IL

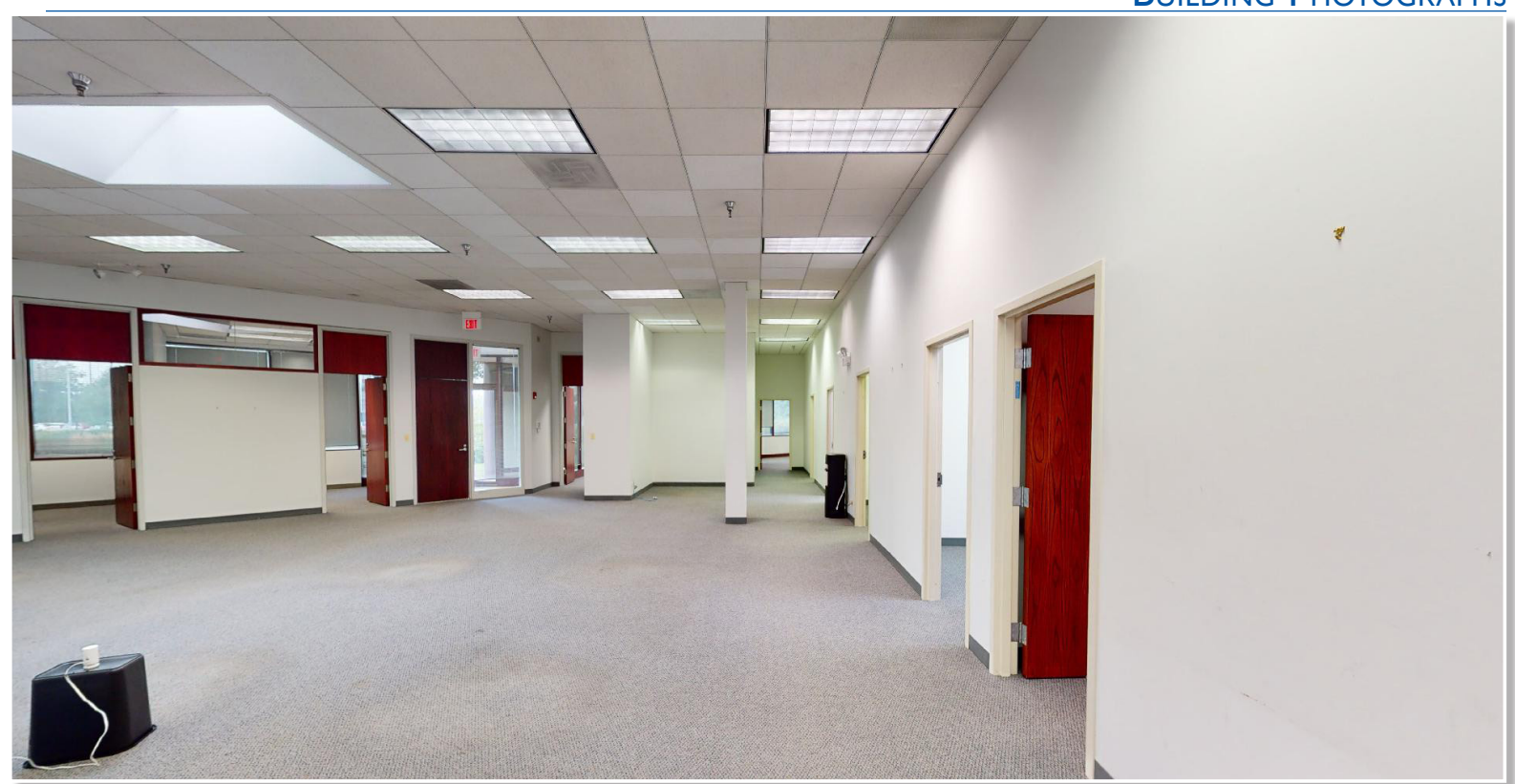




# OFFICE SPACE FOR LEASE

5550 MEADOWBROOK COURT ROLLING MEADOWS, IL 60008

## BUILDING PHOTOGRAPHS



FULL HEIGHT GLASS, SKYLIGHTS &  
HIGH END OFFICE FINISHES

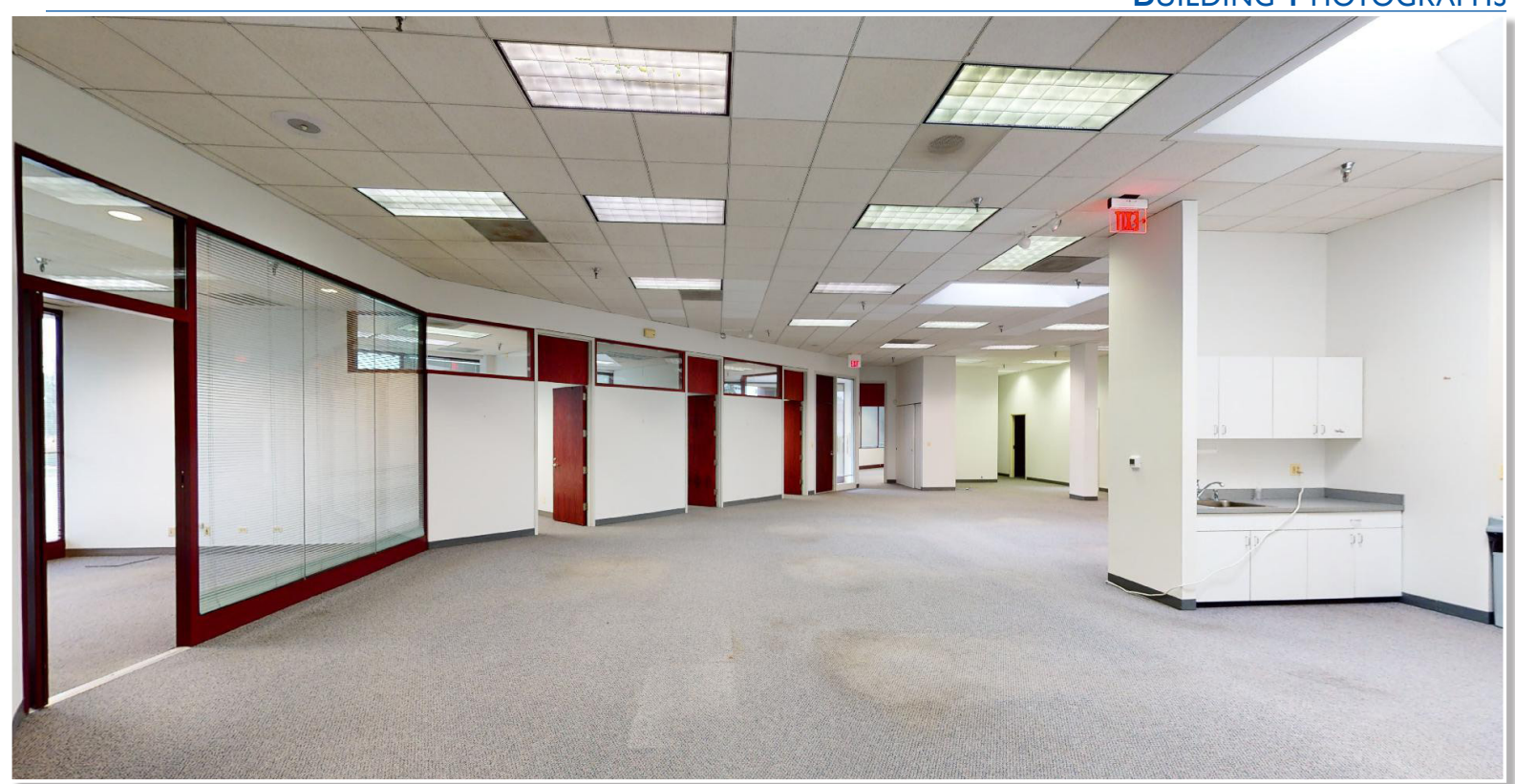




# OFFICE SPACE FOR LEASE

5550 MEADOWBROOK COURT ROLLING MEADOWS, IL 60008

## BUILDING PHOTOGRAPHS



FULL HEIGHT GLASS, SKYLIGHTS &  
HIGH END OFFICE FINISHES





# OFFICE SPACE FOR LEASE

5550 MEADOWBROOK COURT ROLLING MEADOWS, IL 60008

## BUILDING PHOTOGRAPHS



FULL HEIGHT GLASS, SKYLIGHTS &  
HIGH END OFFICE FINISHES

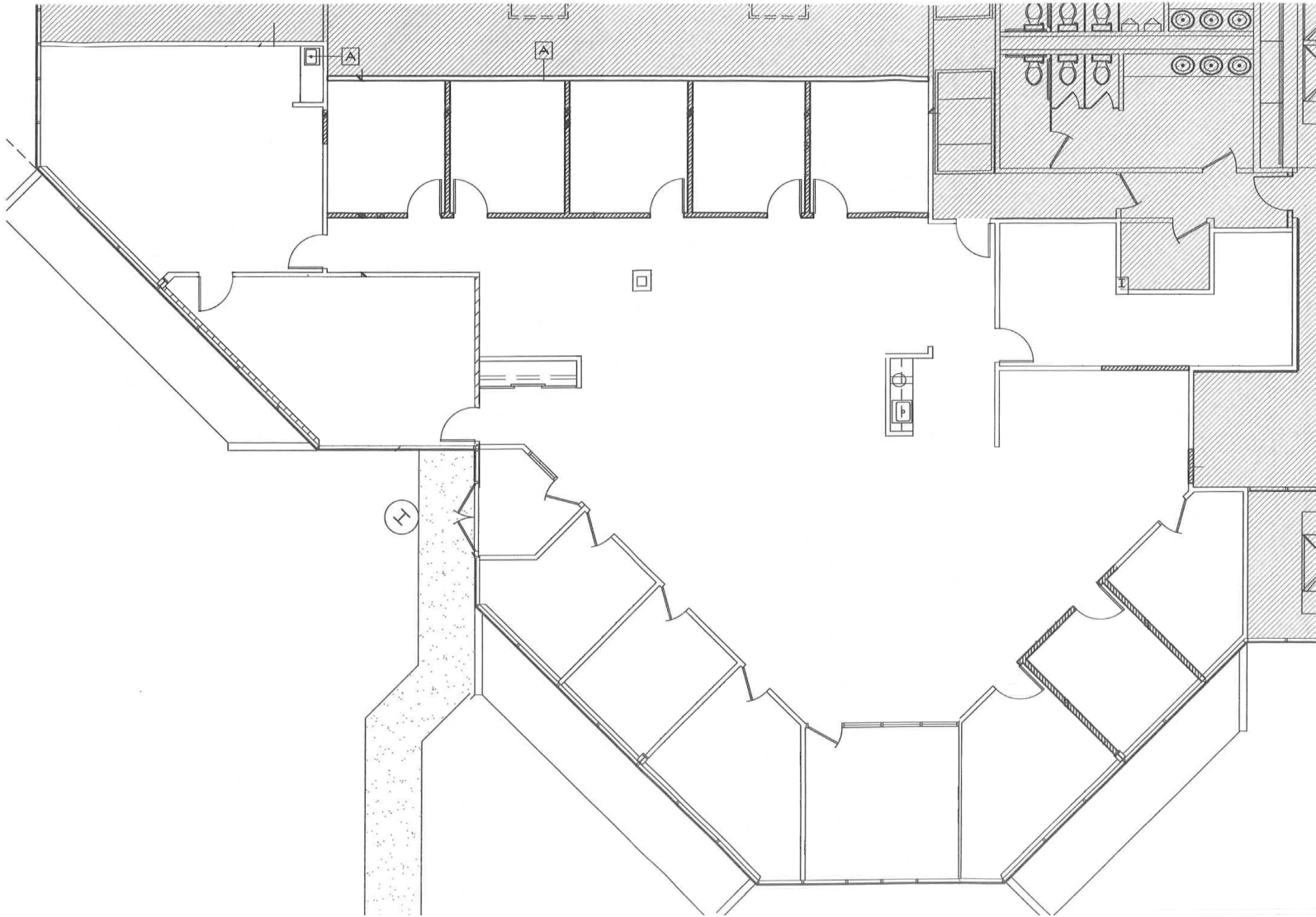




# OFFICE SPACE FOR LEASE

5550 MEADOWBROOK COURT ROLLING MEADOWS, IL 60008

## SOUTH PLAN (5,390 SF) SUITE 210 FLOOR PLAN



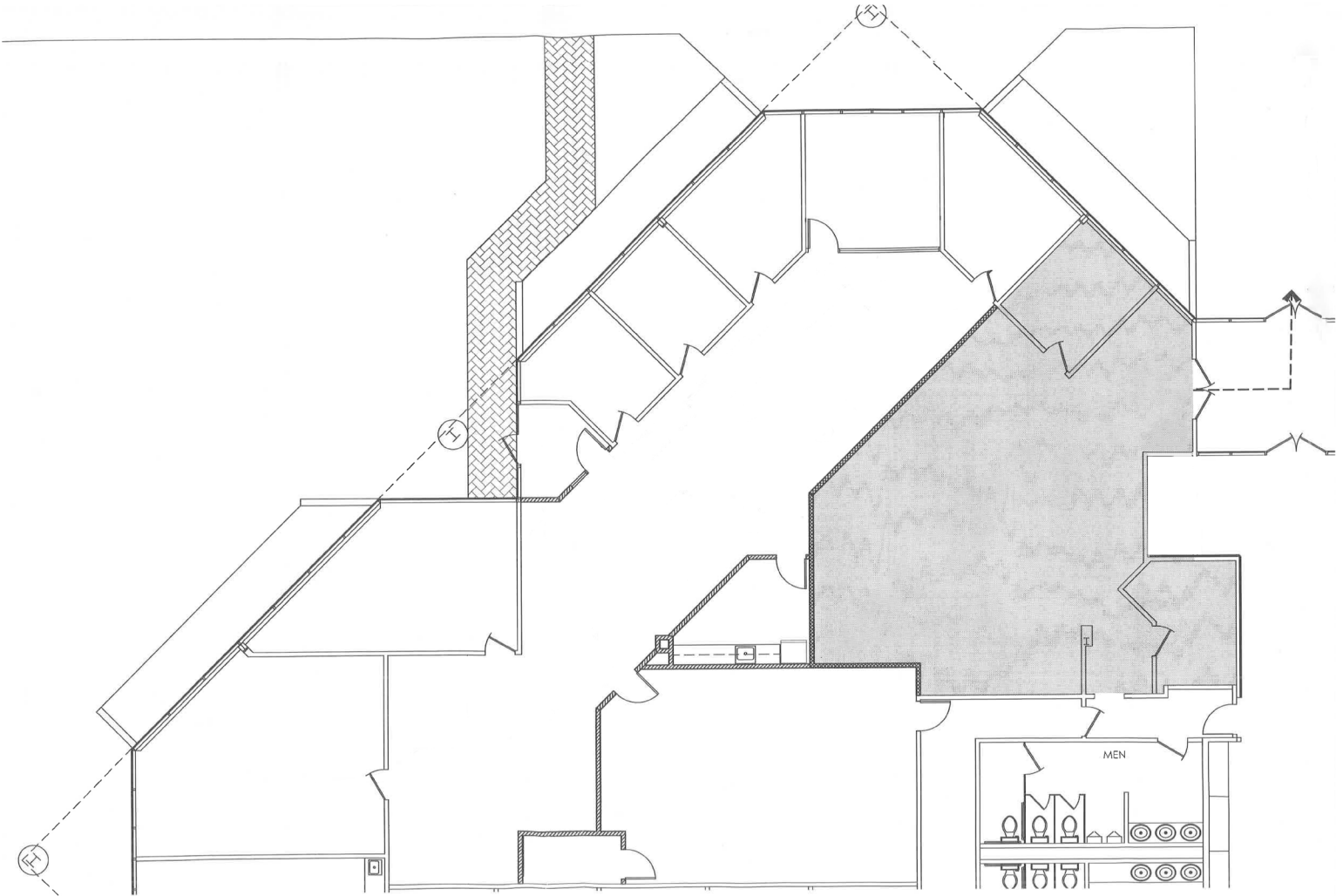
- Suites can be easily combined for a total of 9,660 SF



# OFFICE SPACE FOR LEASE

5550 MEADOWBROOK COURT ROLLING MEADOWS, IL 60008

## NORTH PLAN (4,270 SF) SUITE 120 FLOOR PLAN



- Suites can be easily combined for a total of 9,660 SF