

Warehouse Space For Lease

LORTON, VIRGINIA

**Exceptionally
Clean, Newly
Renovated
Warehouse
Space !!!**

7205 - 7207 LOCKPORT PLACE

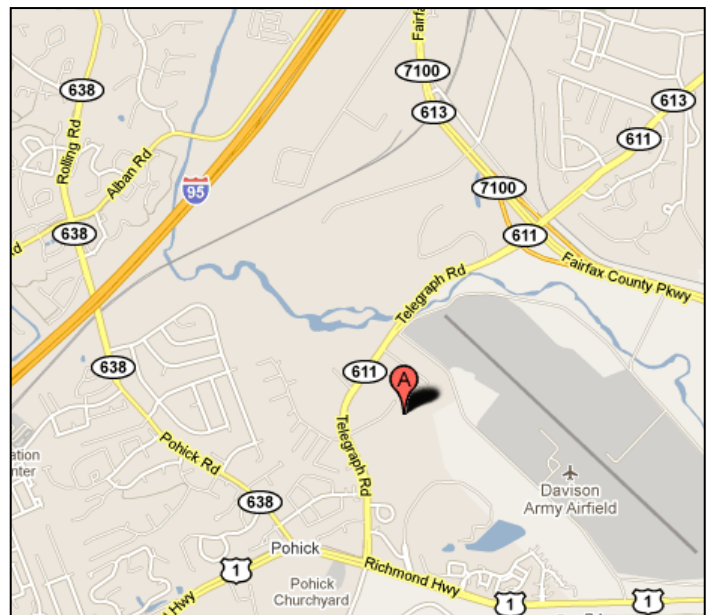


1. Loading Dock & Drive-in Bays
2. Excellent Tractor Trailer Access
3. Excellent Parking
4. Space is Exceptionally Clean
5. Minutes to Fairfax County Pkwy, Fort Belvoir, 95 and 495

The following spaces are available in the above project:

- *1,800 sf Drive-In Warehouse
- *1,850 sf Loading Dock Warehouse
- *Combined for 3,650 sf

- 3,550 sf Loading Dock Warehouse



**FOR MORE INFORMATION
PLEASE CONTACT:**

ROBERT BLUM
301-309-9500
ROBERT@KOSSOWMANAGEMENT.COM

ANDREW KOSSOW
301-309-9500
ANDREW@KOSSOWMANAGEMENT.COM

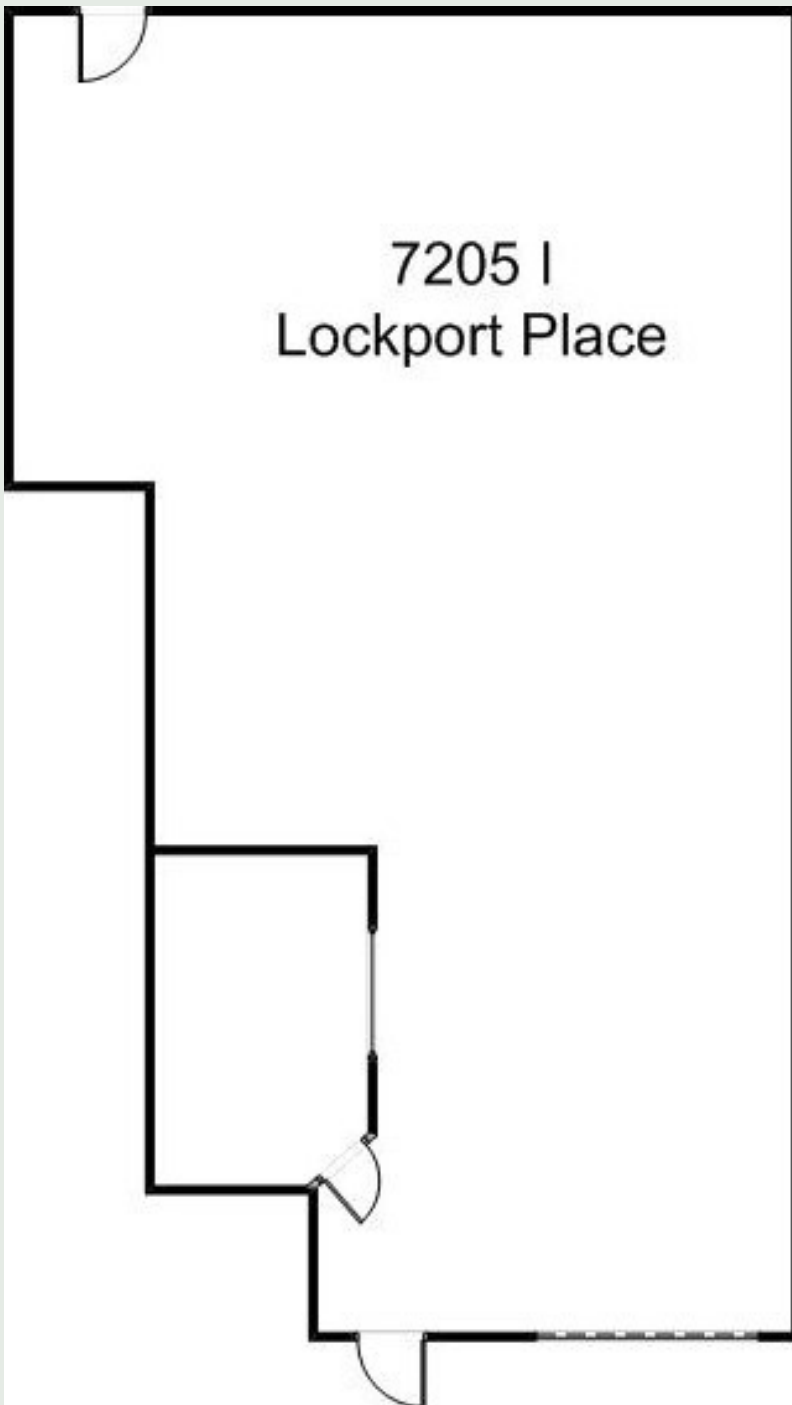
Kossow Management Corp.

1,800 SF Drive-In Warehouse Available

Warehouse Space Includes:

Private Office • Restroom Access

- 10' Overhead Bay Door • Warehouse Heating • 16' Ceilings



* Drawing not to scale



Warehouse Interior



Warehouse Interior



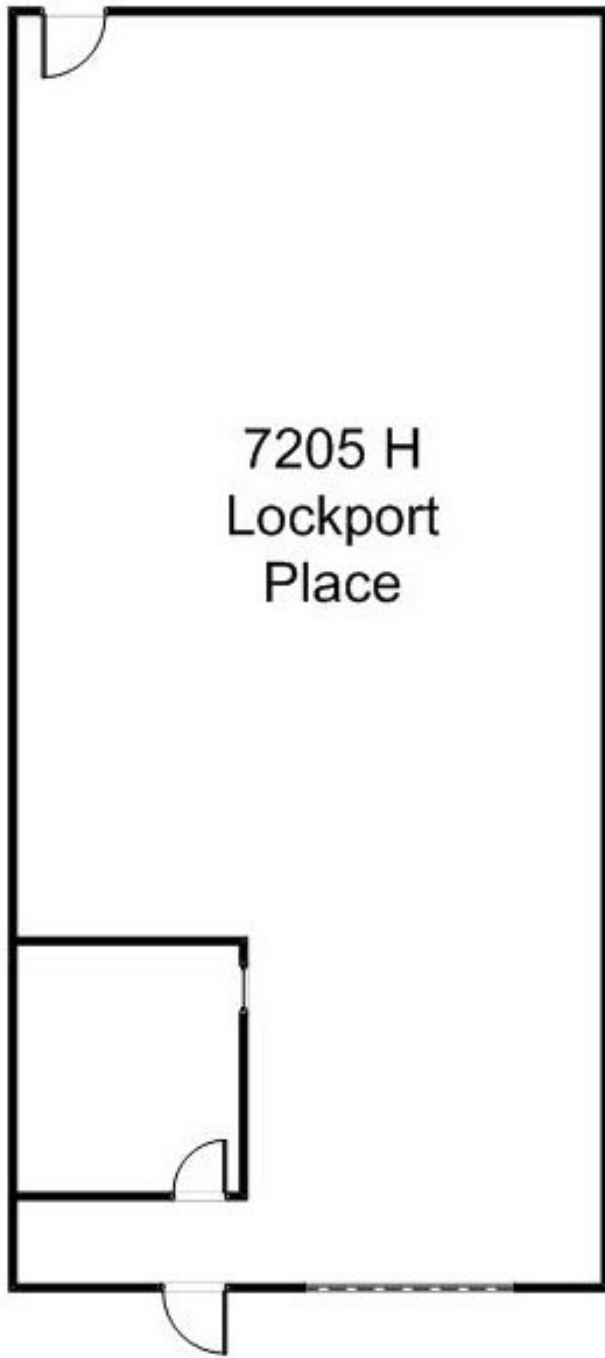
Drive-In Access w/ Ramp

Kossov Management Corp.
(301) 309-9500

1,850 SF Warehouse Available with Loading Dock

Warehouse Space Includes:

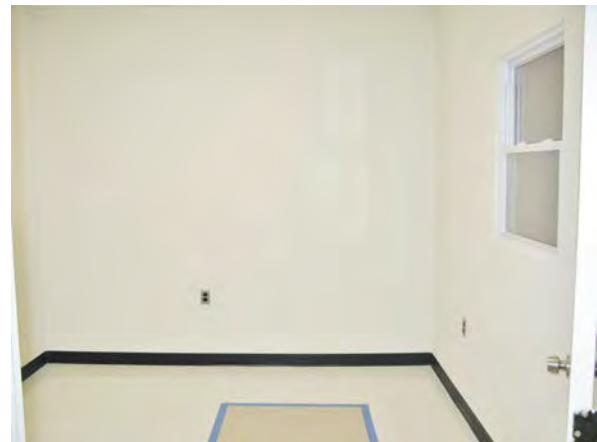
- Private Office • Restroom Access
- 10' Overhead Bay Door • 16' Ceilings • Warehouse Heating



* Drawing not to scale



Warehouse Interior



Private Office Space



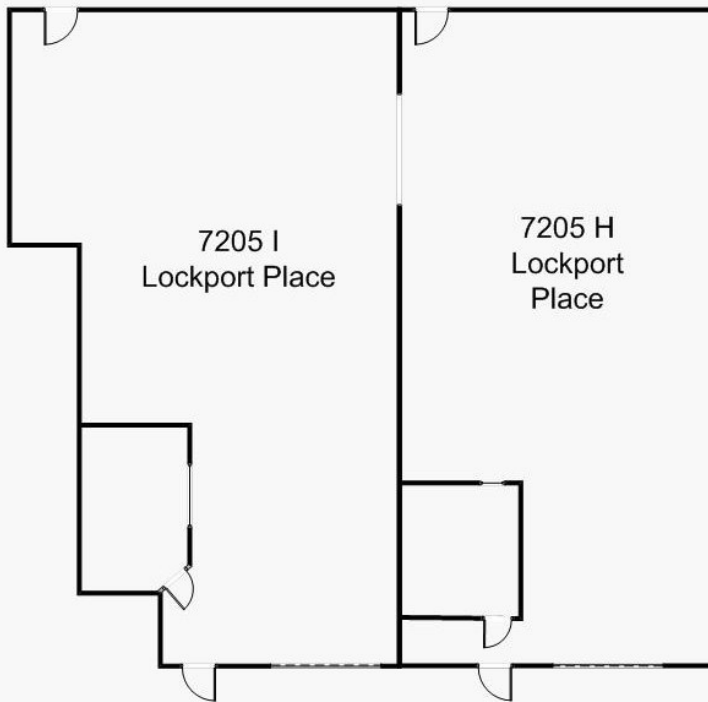
Loading Dock Access

Kossov Management Corp.
(301) 309-9500

3,650 SF Drive-In & Loading Dock Warehouse

Warehouse Spaces Include:

- 2 Private Offices • Restroom Access
- (2) 10' Overhead Bay Doors • 16' Ceilings • Warehouse Heating



* Drawing not to scale



Warehouse Interior



Warehouse Interior



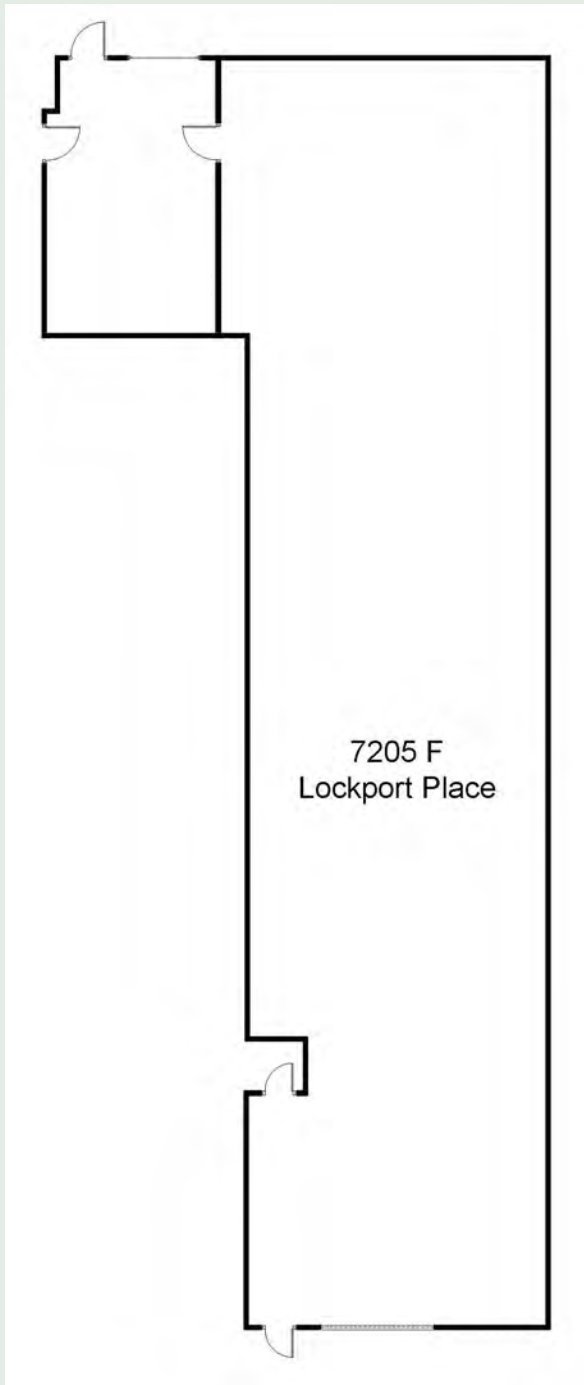
Drive-In & Loading Dock

Kossov Management Corp.
(301) 309-9500

3,550 SF Warehouse Available with Loading Dock

Warehouse Space Includes:

- Large Office with Floor-to-Ceiling Windows
- 10' Overhead Bay Door
- 16' Ceilings
- Gas Warehouse Heating



* Drawing not to scale



Warehouse Interior



Front Office & Entry



Loading Dock Entrance

Kossow Management Corp.

(301) 309-9500