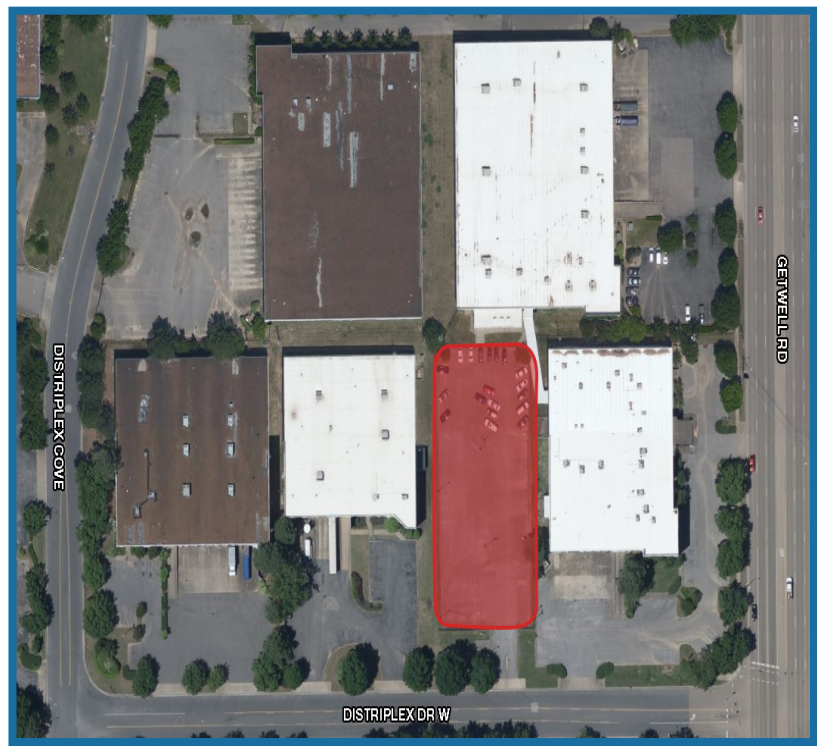


**FOR LEASE OR SALE**  
**.90 ACRES AVAILABLE**



**TRUCK PARKING | INDUSTRIAL OUTDOOR STORAGE**

**3760 Distriplex Dr N**  
Memphis, TN 38118

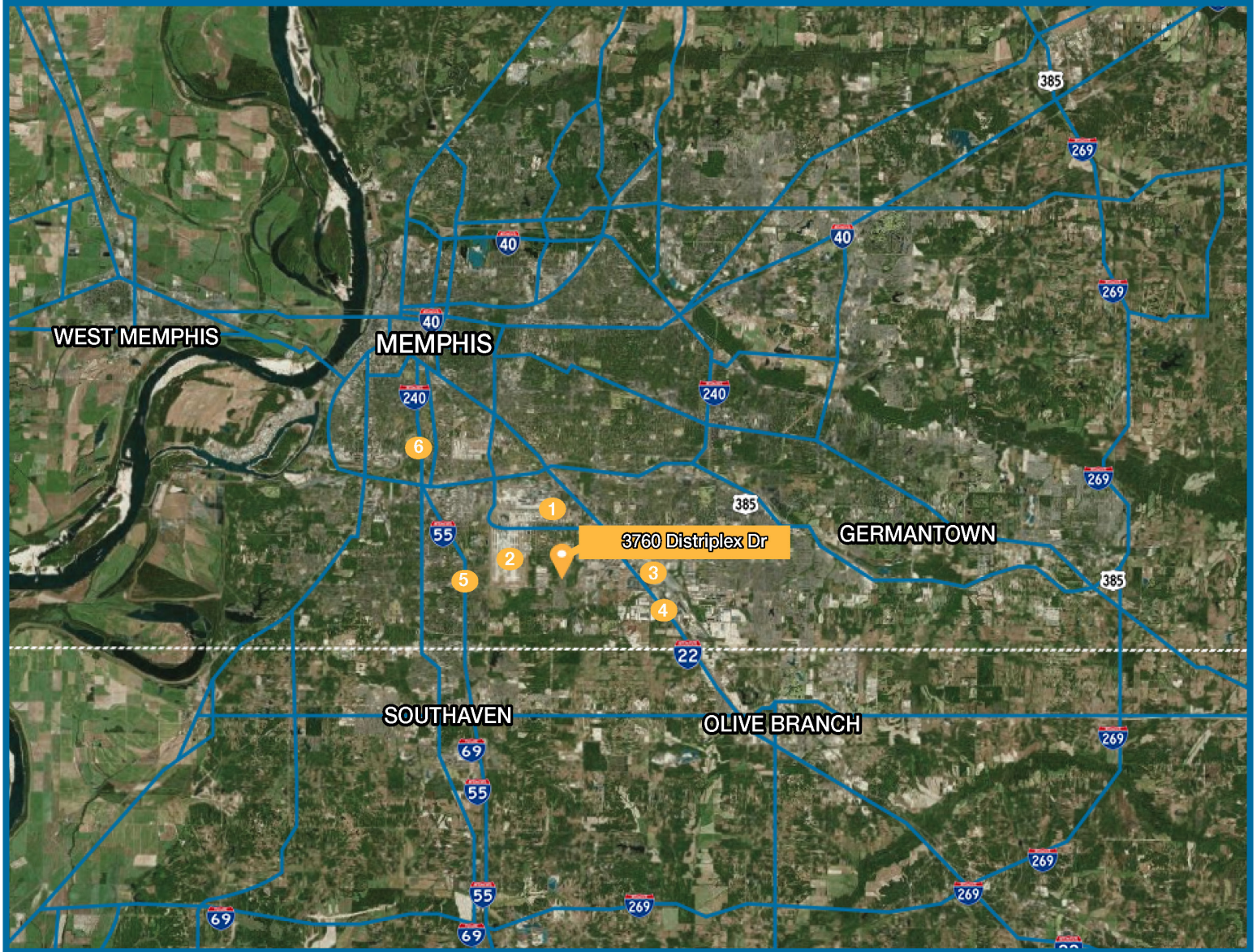


### Property Highlights

- +/- 0.90 acres
- Fully fenced yard
- Gated Entry
- Overhead Security Lighting
- Electrical, Sewer and Water connections on site
- Zoned EMP (light Industrial)
- Direct Access to FedEx local drop facility

For more information:  
**Hank Martin, SIOR**  
Manager / Vice President  
901 526 3100  
hmartin@saigcompany.com

# DRIVE TIME



## Hubs

- |                    |            |
|--------------------|------------|
| 1. FedEx World Hub | 11 Minutes |
| 1. UPS Hub         | 11 Minutes |

## Intermodals

- |         |            |
|---------|------------|
| 3. BNSF | 13 Minutes |
|---------|------------|

## Airport

- |                                  |            |
|----------------------------------|------------|
| 2. Memphis International Airport | 10 Minutes |
|----------------------------------|------------|

## Interstates

- |           |            |
|-----------|------------|
| 4. HWY 78 | 9 Minutes  |
| 5. I-55   | 10 Minutes |
| 6. I-240  | 13 Minutes |

