



4,630 - 9,856 SF AVAILABLE

4225 Phil Niekro Parkway
Norcross, GA 30093

OWNED BY:



FOR LEASE



BUILDING INFORMATION

- Total Size:** 40,195 SF
- Clear Height:** 18' - 20'
- Sprinklers:** Wet System
- Loading:** Fourteen (14) Dock High Doors
Four (4) Drive-In Doors
- Zoning:** M1 - Light Industrial
- Available:** Immediately
- Location:** +/- 2 miles from I-85
+/- 8 miles from I-285
+/- 20 miles from I-20
+/- 32 miles from Atlanta Airport



3500 Lenox Road NE | Suite 1275 | Atlanta, GA 30326 | apexindustrialre.com

For more information, please contact:

MORGAN MCMENAMY

Office: (404) 806 - 6631
Cell: (404) 771 -1199
mmcmenamy@apexindustrialre.com

TREY WEGHORST

Office: (770) 264 - 9420
Cell: (404) 276 - 9314
tweghorst@apexindustrialre.com

RYAN BLACKBURN

Office: (404) 974 - 2716
Cell: (404) 821 - 7715
rblackburn@apexindustrialre.com

Although the information contained therein was provided from sources believed to be reliable, Apex Industrial makes no representation, expressed or implied, as to its accuracy and said information is subject to errors, omissions or changes.



9,856 SF AVAILABLE

4225 Phil Niekro Parkway
Suite 116
Norcross, GA 30093

OWNED BY:



FLOORPLAN



SUITE 116 INFORMATION

- Total Size:** 9,856 SF
- Office:** 1,971 SF
- Warehouse:** 7,885 SF
- Clear Height:** 18' - 20'
- Sprinklers:** Wet System
- Loading:** Two (2) Dock High Doors
Two (2) Drive-In Doors
- Available:** Immediately



3500 Lenox Road NE | Suite 1275 | Atlanta, GA 30326 | apexindustrialre.com

For more information, please contact:

MORGAN MCMENAMY

Office: (404) 806 - 6631
Cell: (404) 771 -1199
mmcmenamy@apexindustrialre.com

TREY WEGHORST

Office: (770) 264 - 9420
Cell: (404) 276 - 9314
tweghorst@apexindustrialre.com

RYAN BLACKBURN

Office: (404) 974 - 2716
Cell: (404) 821 - 7715
rblackburn@apexindustrialre.com

Although the information contained therein was provided from sources believed to be reliable, Apex Industrial makes no representation, expressed or implied, as to its accuracy and said information is subject to errors, omissions or changes.



4,630 SF AVAILABLE

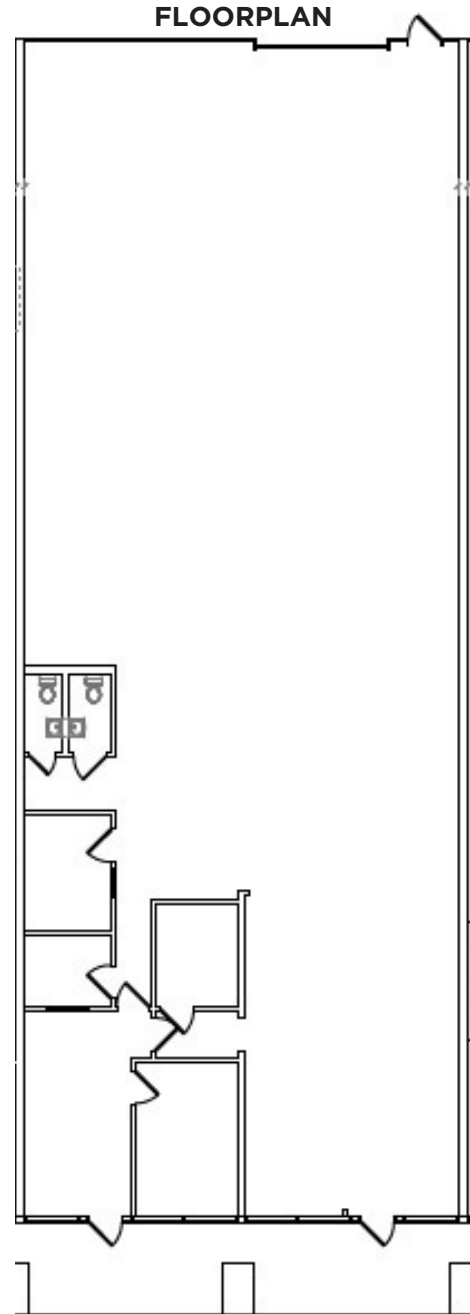
4225 Phil Niekro Parkway
Suite 108-109
Norcross, GA 30093

OWNED BY:



SUITE 108 - 109 INFORMATION

Total Size: 4,630 SF
Office: 1,117 SF
Warehouse: 3,513 SF
Clear Height: 18' - 20'
Sprinklers: Wet System
Loading: One (1) Dock High Door
Available: Immediately



3500 Lenox Road NE | Suite 1275 | Atlanta, GA 30326 | apexindustrialre.com

For more information, please contact:

MORGAN MCMENAMY

Office: (404) 806 - 6631
Cell: (404) 771 -1199
mmcmenamy@apexindustrialre.com

TREY WEGHORST

Office: (770) 264 - 9420
Cell: (404) 276 - 9314
tweghorst@apexindustrialre.com

RYAN BLACKBURN

Office: (404) 974 - 2716
Cell: (404) 821 - 7715
rblackburn@apexindustrialre.com

Although the information contained therein was provided from sources believed to be reliable, Apex Industrial makes no representation, expressed or implied, as to its accuracy and said information is subject to errors, omissions or changes.