

# OFFICE SUITE FOR LEASE 1014 CROMWELL BRIDGE ROAD

Towson, MD 21286

Available: 4,000 SF



## LISTING DATA

**AVAILABLE SF:** 4,000 SF

## ECONOMIC DATA

**LEASE RATE:** \$17.50 SF/yr (MG)

## PROPERTY INFORMATION

**COUNTY:** Baltimore

**MARKET:** Baltimore

**SUBMARKET:** Towson- Baltimore

## BUILDING DATA

**TOTAL BUILDING SF:** 24,000 SF

**YEAR BUILT:** 1985

## PROPERTY OVERVIEW

4,000 square feet of office with direct entrance located in Towson

## PROPERTY HIGHLIGHTS

- Located directly off I-695
- Less than 2 miles from Towson Town Center
- Space is separately metered with its own direct entrance, this space is perfect for any tenant wanting to control their own hours of operation

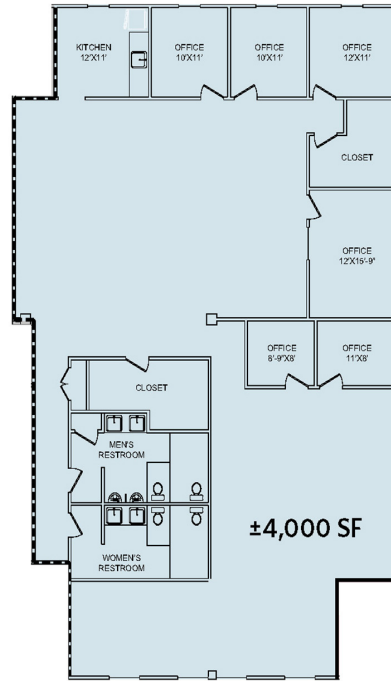
**Ben Brooks**  
Associate  
443.741.4053  
bbrooks@lee-associates.com

All information furnished regarding property for sale, rental or financing is from sources deemed reliable, but no warranty or representation is made to the accuracy thereof and same is submitted to errors, omissions, change of price, rental or other conditions prior to sale, lease or financing or withdrawal without notice. No liability of any kind is to be imposed on the broker herein.

# OFFICE SUITE FOR LEASE 1014 CROMWELL BRIDGE ROAD

Towson, MD 21286

Available: 4,000 SF



## LEASE INFORMATION

Lease Type:	MG	Lease Term:	Negotiable
Total Space:	4,000 SF	Lease Rate:	\$17.50 SF/yr

## AVAILABLE SPACES

SUITE	SIZE (SF)	LEASE TYPE	LEASE RATE
Suite 1014	4,000 SF	Modified Gross	\$17.50 SF/yr

**Ben Brooks**  
Associate  
443.741.4053  
bbrooks@lee-associates.com

All information furnished regarding property for sale, rental or financing is from sources deemed reliable, but no warranty or representation is made to the accuracy thereof and same is submitted to errors, omissions, change of price, rental or other conditions prior to sale, lease or financing or withdrawal without notice. No liability of any kind is to be imposed on the broker herein.

# OFFICE SUITE FOR LEASE 1014 CROMWELL BRIDGE ROAD

Towson, MD 21286

Available: 4,000 SF

**LEE & ASSOCIATES**  
COMMERCIAL REAL ESTATE SERVICES



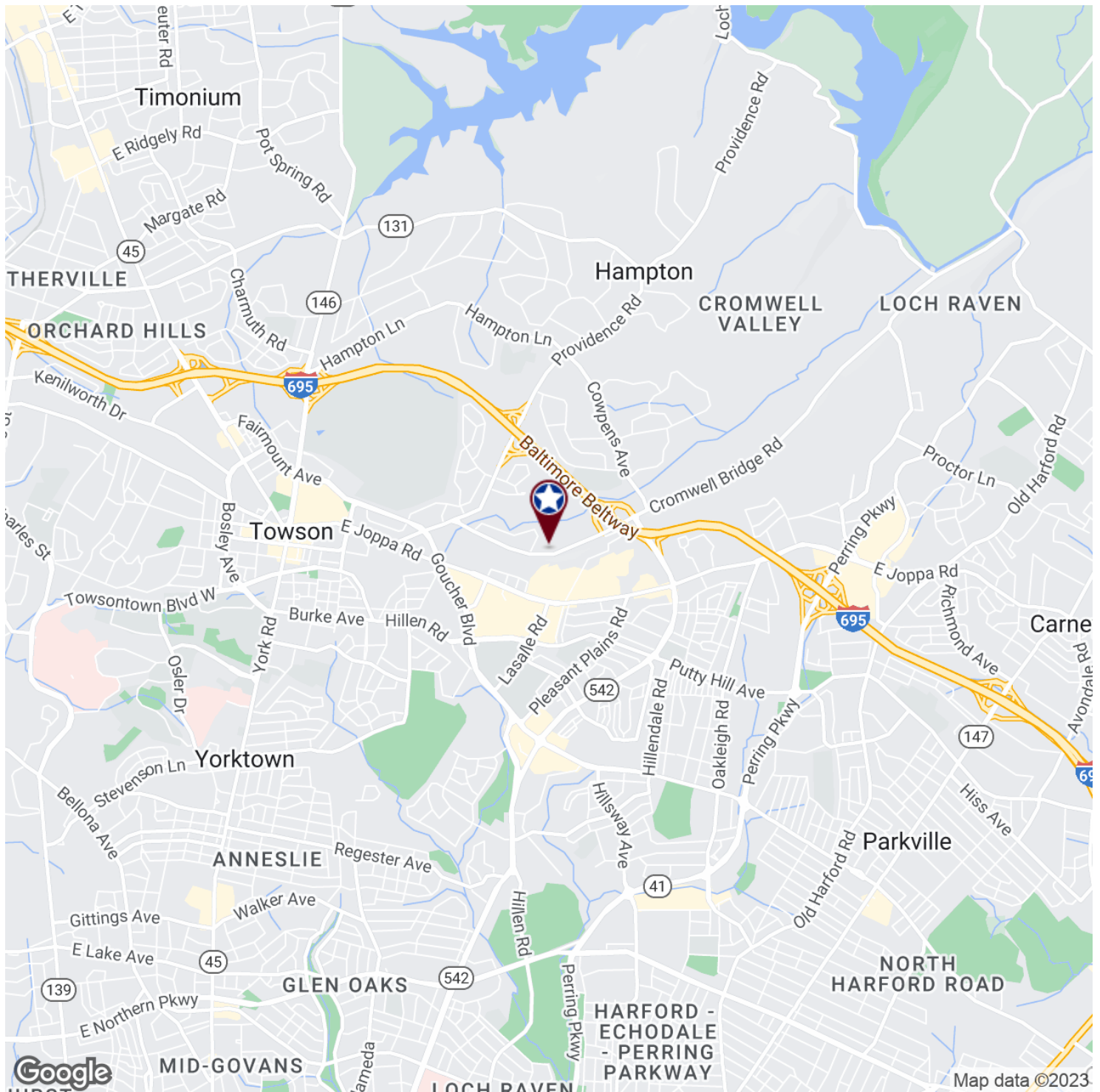
**Ben Brooks**  
Associate  
443.741.4053  
bbrooks@lee-associates.com

All information furnished regarding property for sale, rental or financing is from sources deemed reliable, but no warranty or representation is made to the accuracy thereof and same is submitted to errors, omissions, change of price, rental or other conditions prior to sale, lease or financing or withdrawal without notice. No liability of any kind is to be imposed on the broker herein.

# OFFICE SUITE FOR LEASE 1014 CROMWELL BRIDGE ROAD

Towson, MD 21286

Available: 4,000 SF



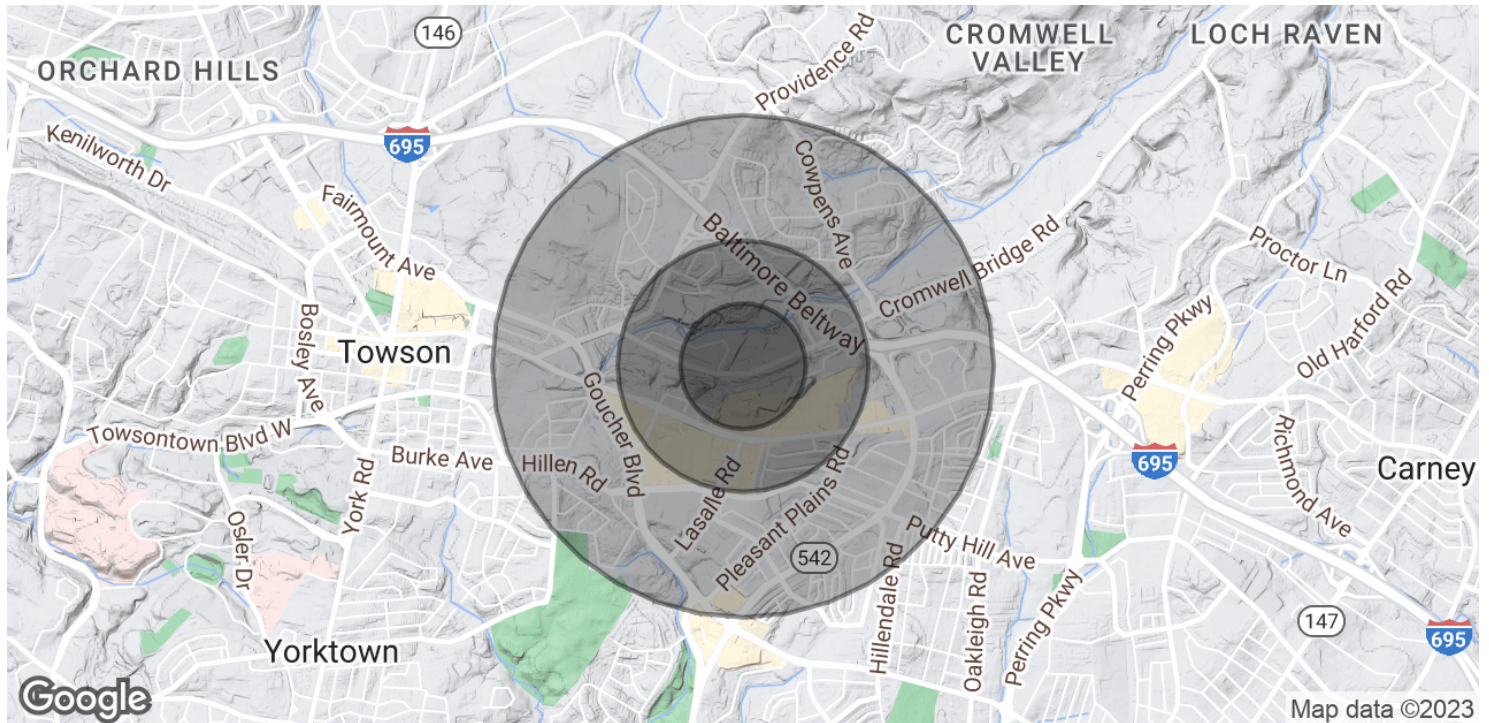
**Ben Brooks**  
Associate  
443.741.4053  
bbrooks@lee-associates.com

All information furnished regarding property for sale, rental or financing is from sources deemed reliable, but no warranty or representation is made to the accuracy thereof and same is submitted to errors, omissions, change of price, rental or other conditions prior to sale, lease or financing or withdrawal without notice. No liability of any kind is to be imposed on the broker herein.

# OFFICE SUITE FOR LEASE 1014 CROMWELL BRIDGE ROAD

Towson, MD 21286

Available: 4,000 SF



## POPULATION

	0.25 MILES	0.5 MILES	1 MILE
Total Population	660	2,461	13,731
Average Age	38.5	38.7	35.8
Average Age (Male)	39.0	39.8	35.8
Average Age (Female)	33.7	34.7	35.3

## HOUSEHOLDS & INCOME

	0.25 MILES	0.5 MILES	1 MILE
Total Households	292	1,072	5,942
# of Persons per HH	2.3	2.3	2.3
Average HH Income	\$99,560	\$102,494	\$88,361
Average House Value	\$297,545	\$291,998	\$253,349

\* Demographic data derived from 2020 ACS - US Census

**Ben Brooks**  
Associate  
443.741.4053  
bbrooks@lee-associates.com

All information furnished regarding property for sale, rental or financing is from sources deemed reliable, but no warranty or representation is made to the accuracy thereof and same is submitted to errors, omissions, change of price, rental or other conditions prior to sale, lease or financing or withdrawal without notice. No liability of any kind is to be imposed on the broker herein.