

Development Lot | Adjacent to The Benz | Land For Sale or Lease

420 Chapel St, Atlanta, GA 30313



Property Description

420 Chapel Street sits on a corner lot and is adjacent to the \$5 Billion mixed use project known as Centennial Yards (also known as "The Gulch"). Centennial Yards is a 50 acre mixed use development that will include 12 million square feet across a mix of offices, retail, residential, and hospitality.

Property Highlights

- Zoned MRC-2C within City of Atlanta
- Located just a few hundred yards South of "The Benz"
- Perfect future hospitality site
- Steps away from Castleberry Hill retail

OFFERING SUMMARY

Lease Rate:	\$8,500.00 per month (NNN)
Purchase Price:	Call for Details
Available SF:	0.56 Acres
Lot Size:	24,290 SF
Zoning:	MRC-2C

DEMOGRAPHICS

	1 MILE	2 MILES	3 MILES
Total Households	5,846	25,241	59,637
Total Population	18,451	71,686	147,744
Average HH Income	\$37,527	\$44,083	\$58,402

DANNY GLUSMAN

BROKER

404.465.3941

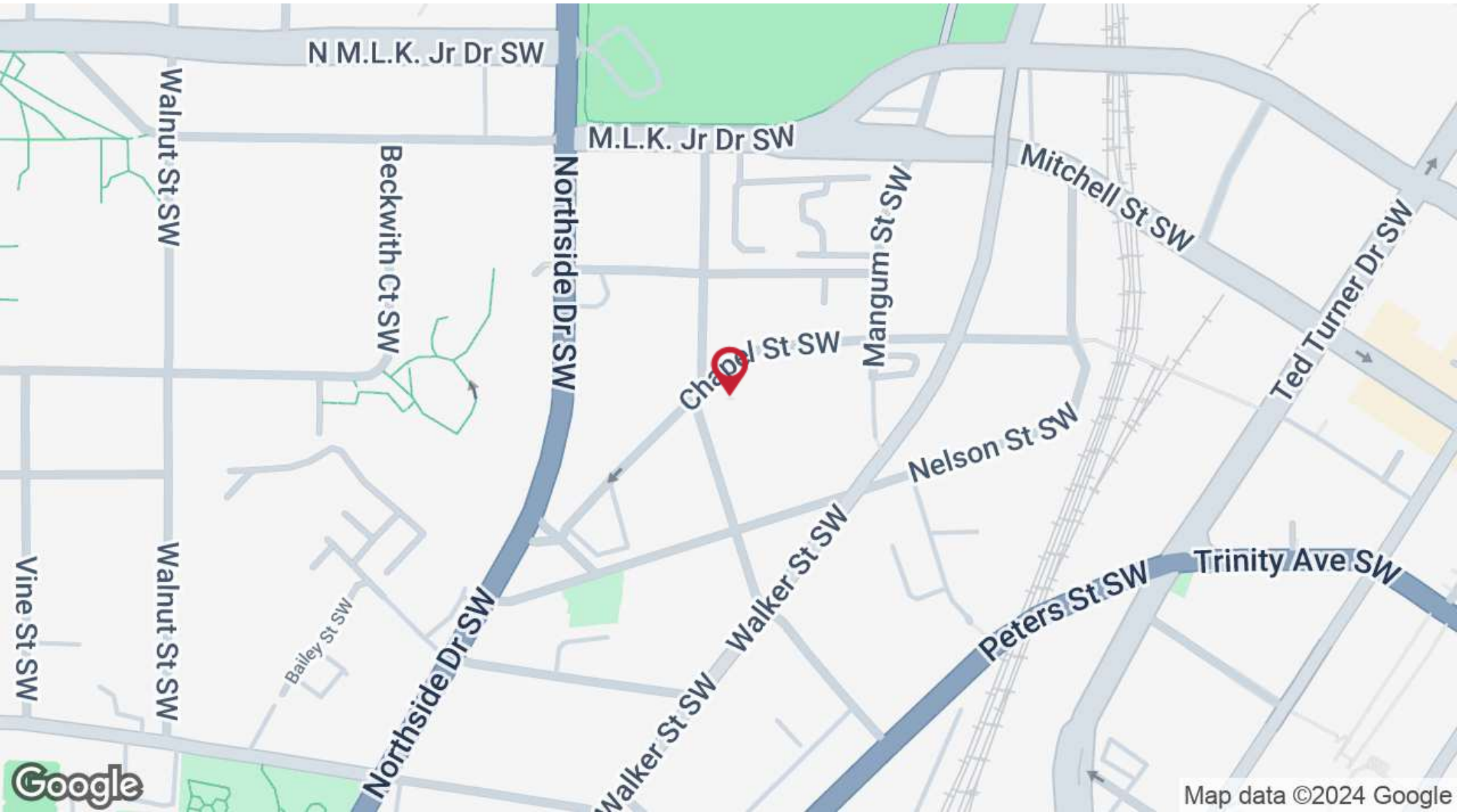
dglusman@widespreadgroup.com

WIDESPREAD
COMMERCIAL GROUP

widespreadgroup.com

Development Lot | Adjacent to The Benz | Land For Sale or Lease

420 Chapel St, Atlanta, GA 30313



DANNY GLUSMAN

BROKER

404.465.3941

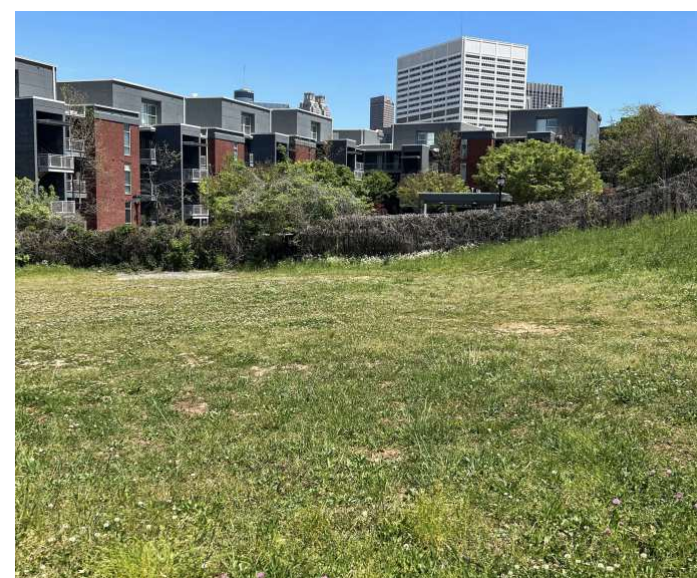
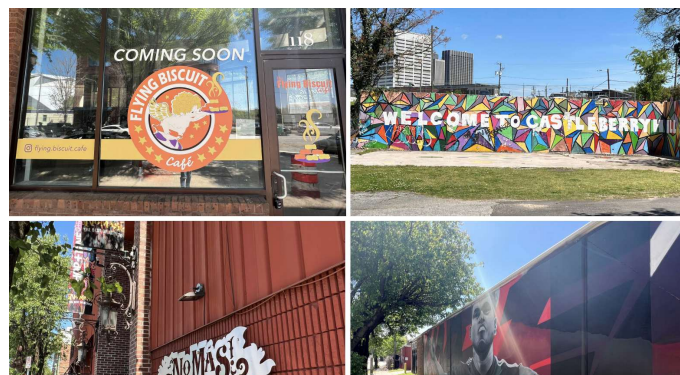
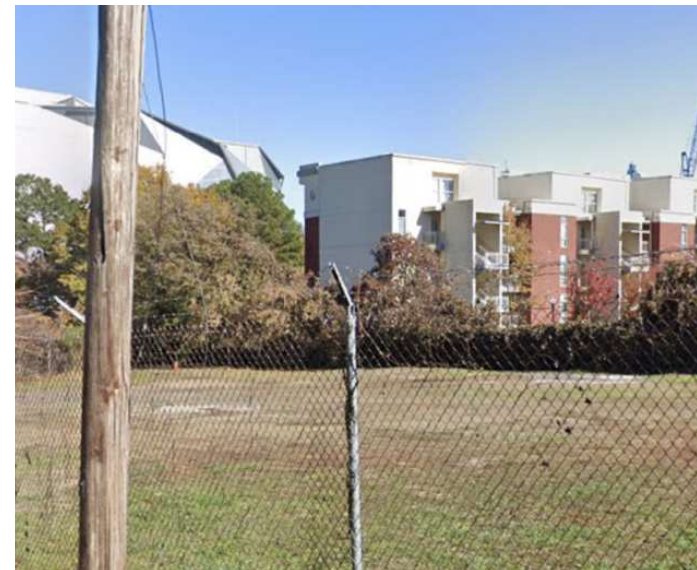
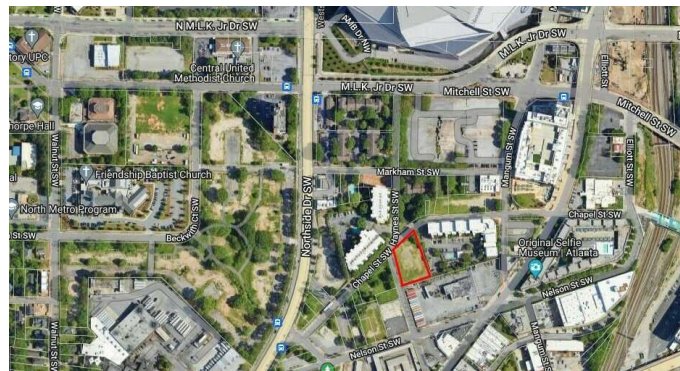
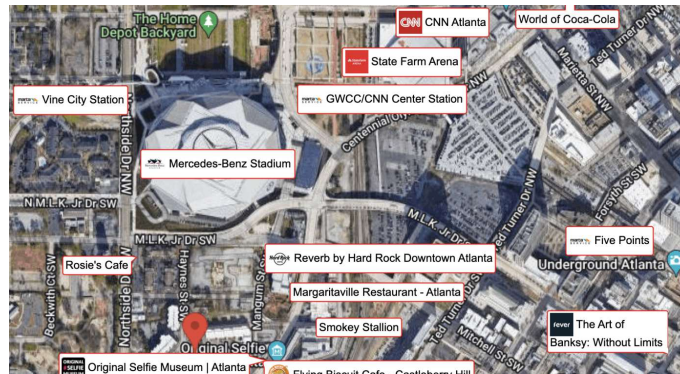
dglusman@widespreadgroup.com

WIDESPREAD
COMMERCIAL GROUP

widespreadgroup.com

Development Lot | Adjacent to The Benz | Land For Sale or Lease

420 Chapel St, Atlanta, GA 30313



DANNY GLUSMAN
BROKER
404.465.3941
dglusman@widespreadgroup.com

WIDESPREAD
COMMERCIAL GROUP

widespreadgroup.com

Development Lot | Adjacent to The Benz | Land For Sale or Lease

420 Chapel St, Atlanta, GA 30313



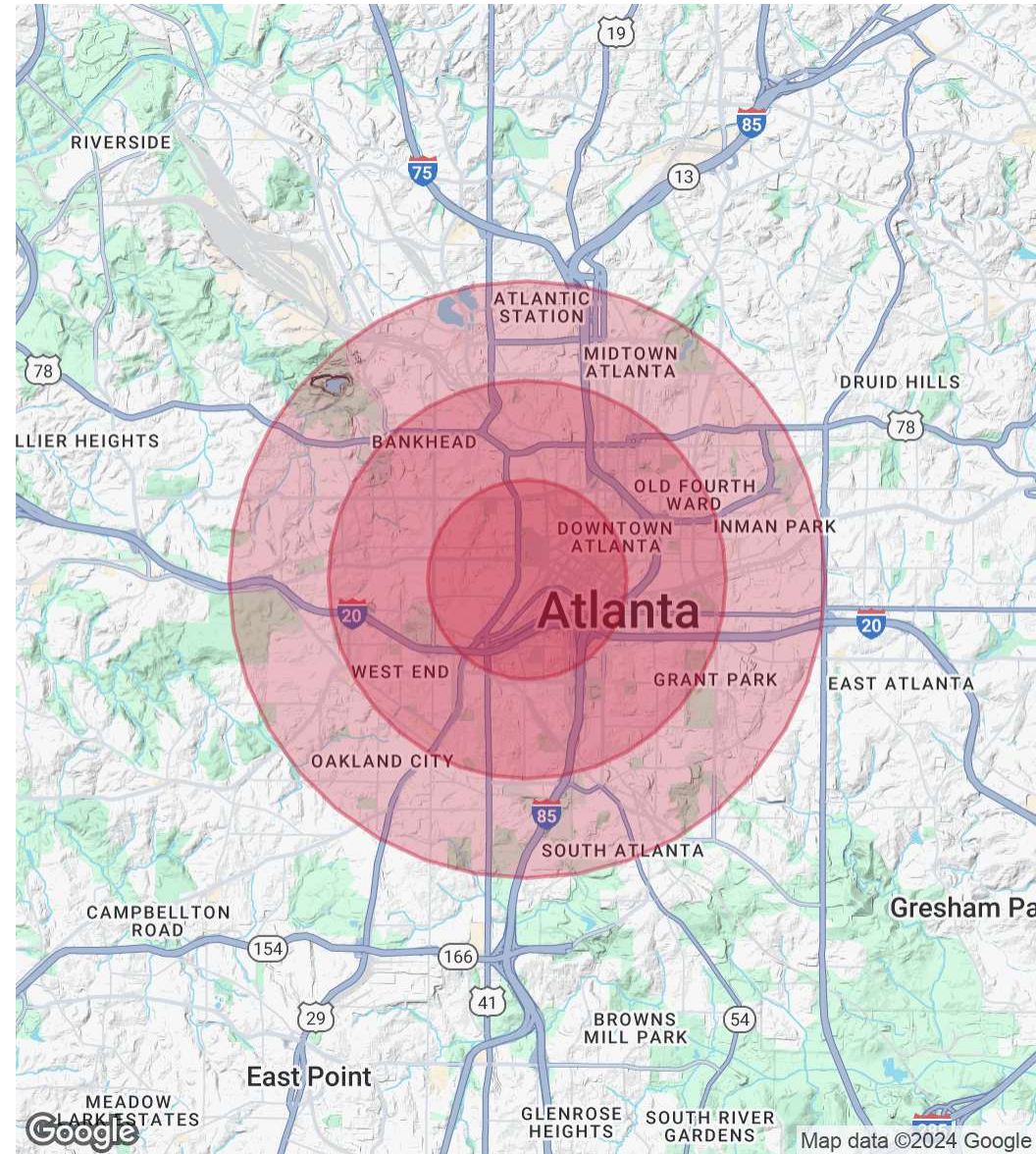
POPULATION

	1 MILE	2 MILES	3 MILES
Total Population	18,451	71,686	147,744
Average Age	25.4	29.3	31.3
Average Age (Male)	28.4	29.8	31.5
Average Age (Female)	25.5	29.4	31.5

HOUSEHOLDS & INCOME

	1 MILE	2 MILES	3 MILES
Total Households	5,846	25,241	59,637
# of Persons per HH	3.2	2.8	2.5
Average HH Income	\$37,527	\$44,083	\$58,402
Average House Value	\$263,463	\$213,195	\$235,941

2020 American Community Survey (ACS)



DANNY GLUSMAN

BROKER

404.465.3941

dglusman@widespreadgroup.com

WIDESPREAD
COMMERCIAL GROUP

widespreadgroup.com