



#305 - 2730 Commercial Drive | Vancouver, BC

FOR SUBLEASE | Improved Office Space

To sublease a 2,050 SF improved office on Commercial Drive and 11th Ave. The current use is a clinic for naturopathic and integrated health services and is on the top floor of the building facing northeast. It is improved with reception, a waiting area, 6 private offices, open workspace, kitchenette and lab room.



#305 - 2730 Commercial Dr Vancouver, BC

Location

This property is located at the northeast corner of Commercial Drive and E 11th Avenue. It is 2 blocks from the Commercial Broadway SkyTrain Station where the Expo Line and Millennium Lines meet.

Commercial Drive is a vibrant and culturally rich neighbourhood in East Vancouver known for its wide variety of restaurants and cuisines from around the world, unique shops, vintage stores, bars, pubs, coffee houses and live music venues.

Features

- ▶ Currently used for naturopathic and integrated health services
- ▶ Improved with reception, 6 private offices, open work space, kitchenette and waiting area
- ▶ Air-conditioned
- ▶ Internal washer and dryer
- ▶ Windows facing north and east
- ▶ Secure underground parking – ratio 1 stall per 800 SF leased

NAI Commercial

Property Details

Address

#305 - 2730 Commercial Drive
Vancouver, BC V5N 5P4

Size

2,050 SF

Base Rent

Contact Listing Agent

Additional Rent (2024 est.)

\$19.75/SF

Sublease Expiry

July 30th, 2026

Conor Finucane*

Commercial Sales & Leasing

604 691 6604

cfinucane@naicommercial.ca

*Personal Real Estate Corporation

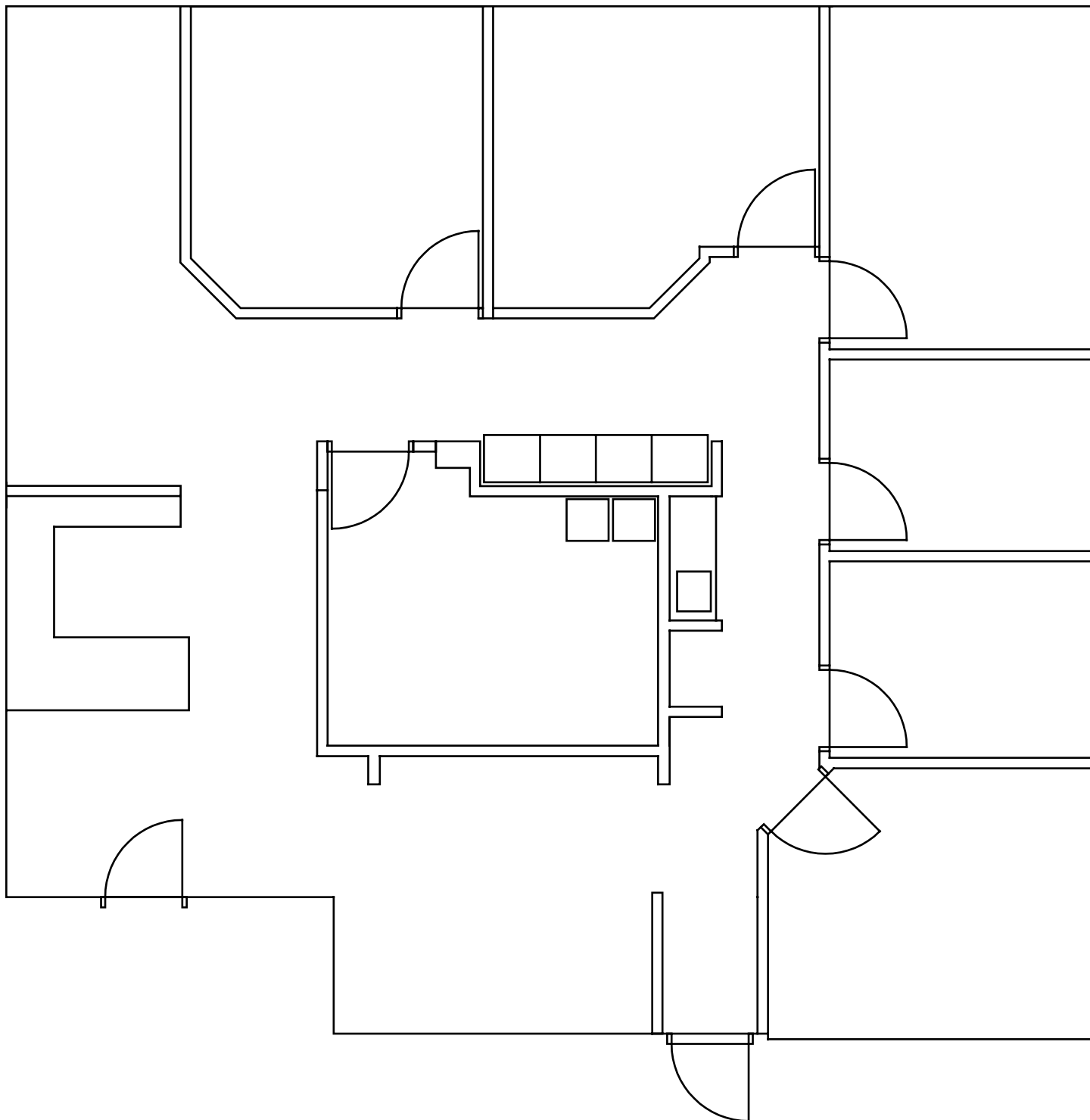


#305 - 2730 Commercial Drive

Vancouver, BC



Floor Plan



Conor Finucane*

Commercial Sales & Leasing

604 691 6604

cfinucane@naicommercial.ca

*Personal Real Estate Corporation

NAI Commercial

1075 W Georgia St, Suite 1300

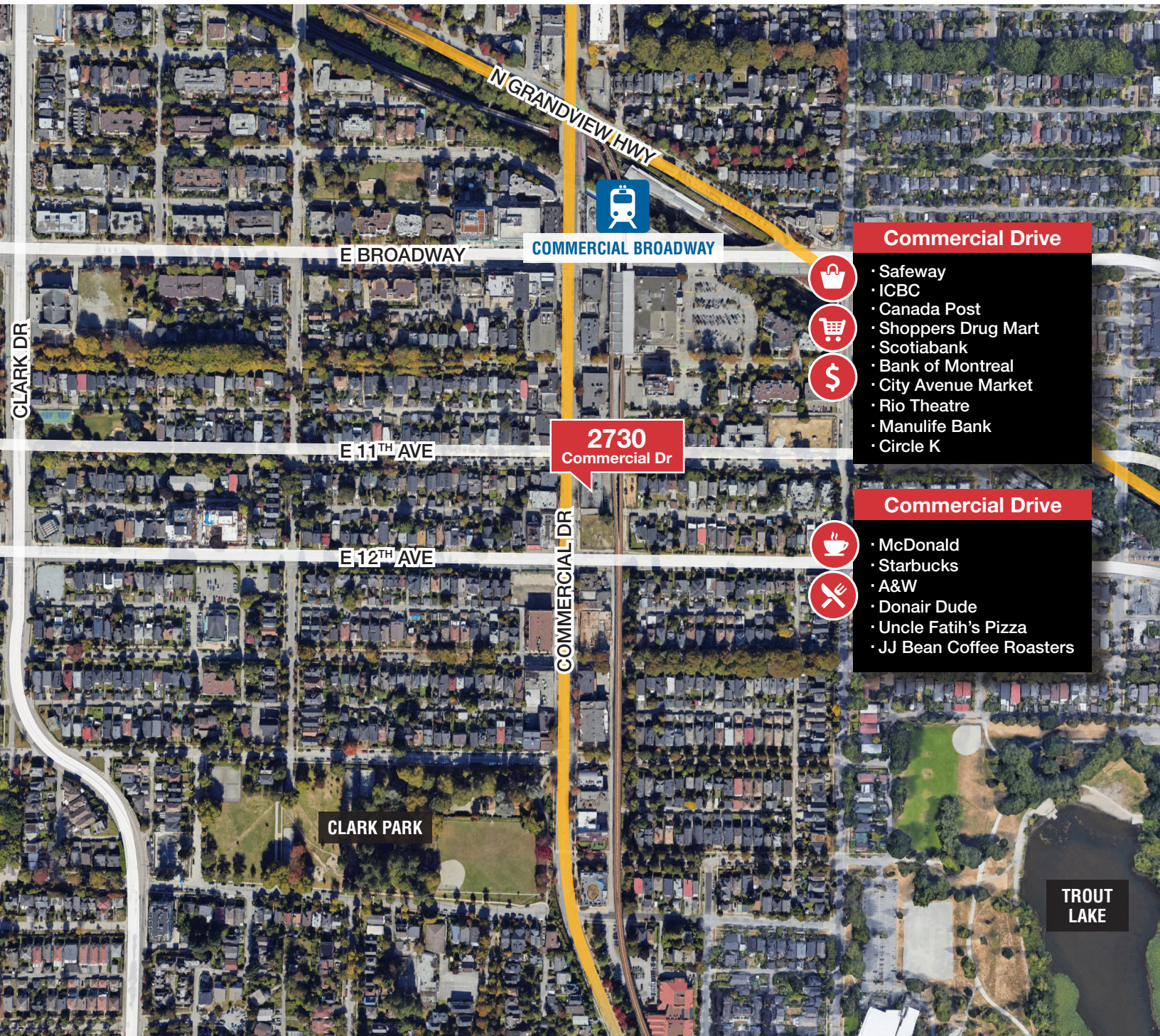
Vancouver, BC V6E 3C9

+1 604 683 7535

naicommercial.ca

#305 - 2730 Commercial Drive

Vancouver, BC



Commercial Drive

- Safeway
- ICBC
- Canada Post
- Shoppers Drug Mart
- Scotiabank
- Bank of Montreal
- City Avenue Market
- Rio Theatre
- Manulife Bank
- Circle K

Commercial Drive

- McDonald
- Starbucks
- A&W
- Donair Dude
- Uncle Fatih's Pizza
- JJ Bean Coffee Roasters

Conor Finucane* | Commercial Sales & Leasing

604 691 6604 | cfinucane@naicommercial.ca

*Personal Real Estate Corporation

No warranty or representation, express or implied, is made as to the accuracy of the information contained herein, and the same is submitted subject to errors, omissions, change of price, rental or other conditions, prior sale, lease or financing, or withdrawal without notice, and of any special listing conditions imposed by our principals no warranties or representations are made as to the condition of the property or any hazards contained therein are any to be implied.

NAICommercial

NAI Commercial | 1300-1075 W Georgia St
Vancouver, BC V6E 3C9 | naicommercial.ca