



31501 FM 306

31501 FM 306, Spring Branch, TX 78070



Shawn Chervinskis

Texas Network Realty
101 Ledge Spgs, Boerne, TX 78006
shawn@texasnetworkrealty.com
(210) 968-7653

31501 FM 306

\$1,300,000

Prime Commercial Land for Sale: Exceptional and Growing Location

Discover a rare opportunity to own 6.54 acres of prime commercial land, perfectly situated next to the proposed HEB located on US Hwy 281 & FM 306. This strategic location offers unparalleled visibility and connectivity.

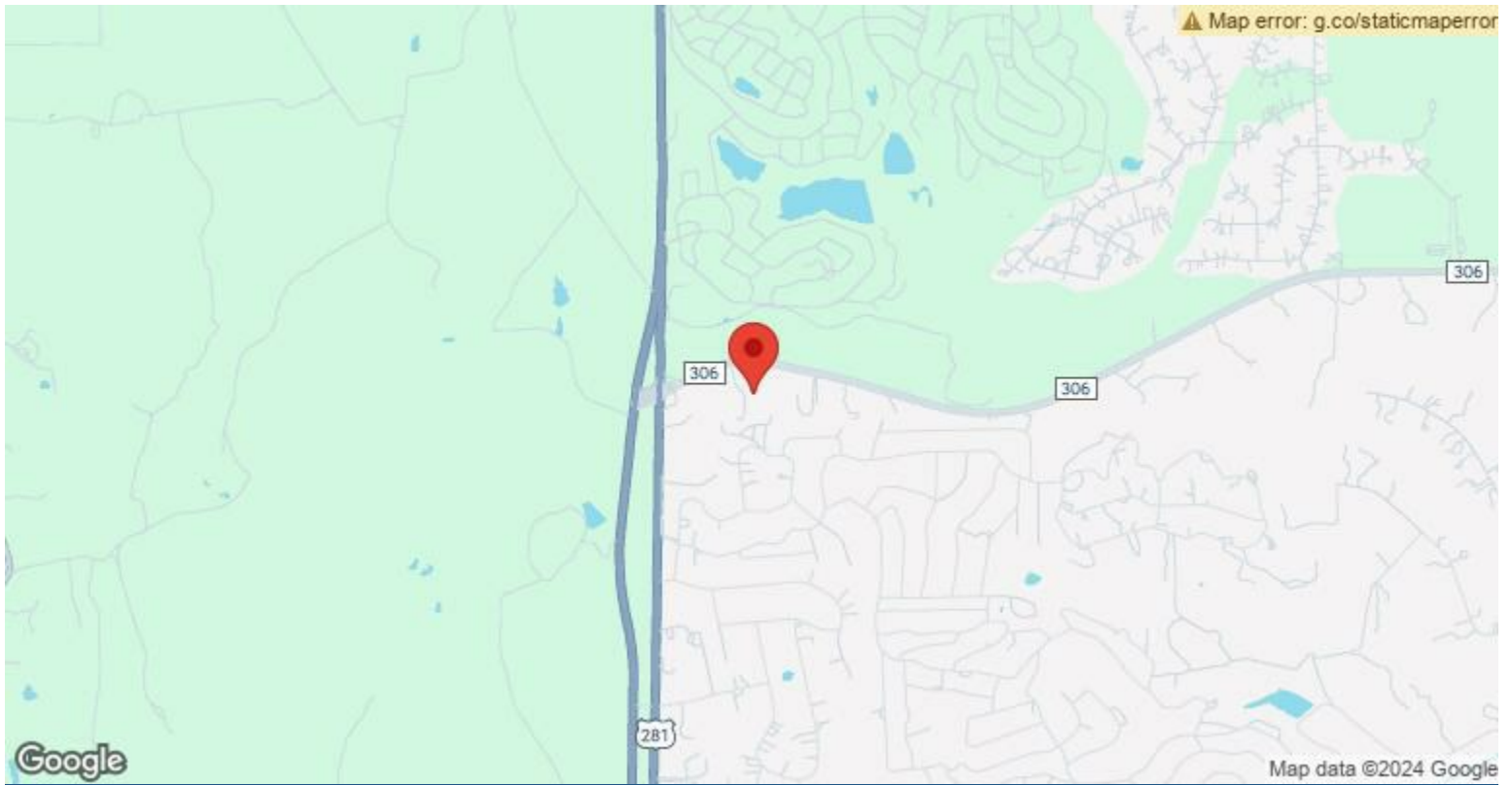
Key Features:

- Size: 6.56 acres
- Location: 24 miles north of San Antonio, 0.5 miles east of US Hwy 281, on FM 306
- Proximity to Major Developments
- Home Depot Store and Tractor Supply are major anchors within approximately 10 miles
- Creekside Retail Center and Creekside Office Building enhance the area's commercial appeal
- Corner Gas Station Remodel
- Surrounded by new and established neighborhoods

- Situated next to proposed HEB
- Development Opportunity
- Growing Area



Price:	\$1,300,000
Property Type:	Land
Property Subtype:	Commercial
Proposed Use:	Retail
Sale Type:	Investment or Owner User
Total Lot Size:	6.56 AC
No. Lots:	1
Zoning Description:	OCL
APN / Parcel ID:	83088



31501 FM 306, Spring Branch, TX 78070

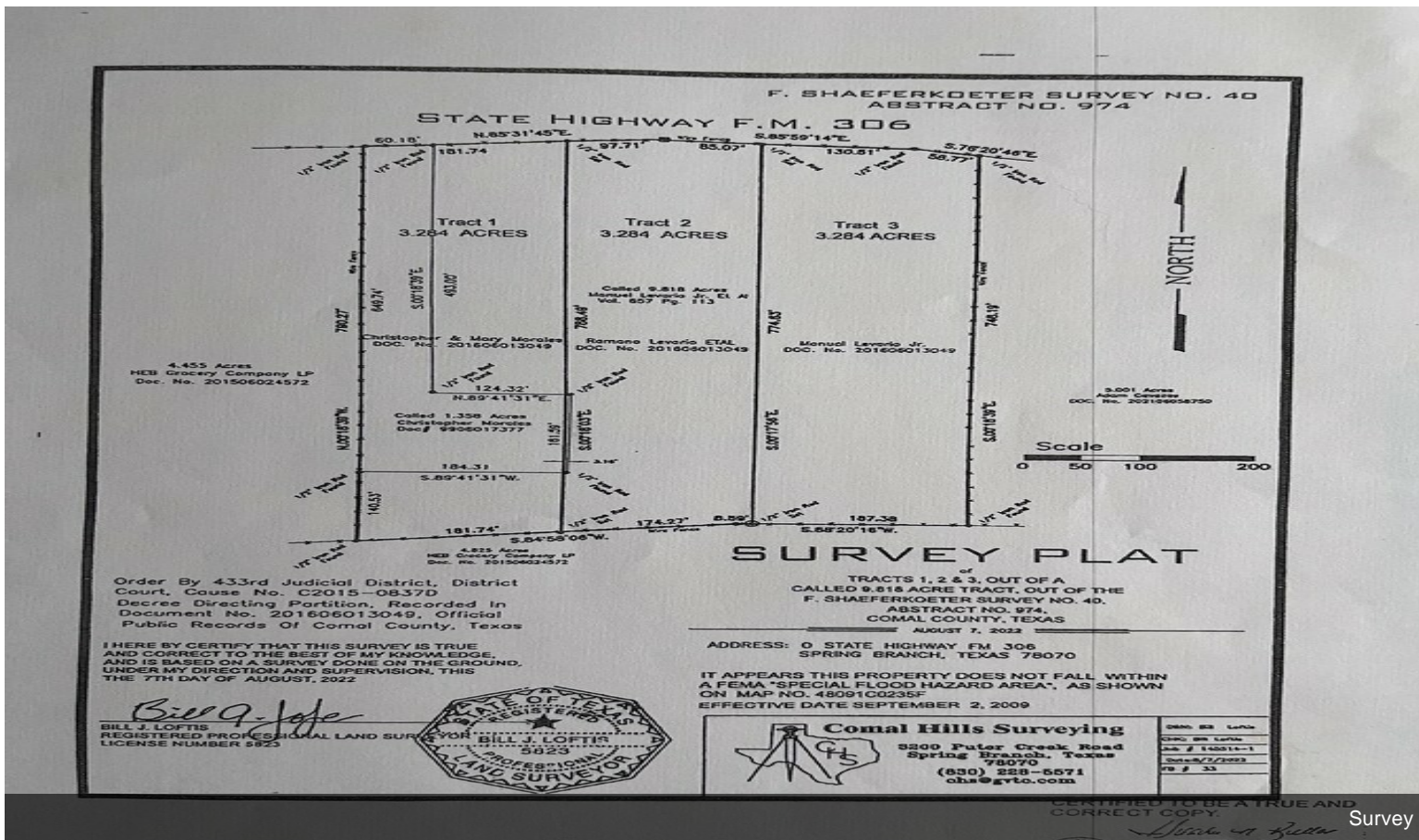
Property Photos



Property Photos



Flat



Property Photos

