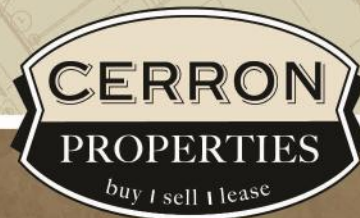


# OFFICE / SHOWROOM NEAR DOWNTOWN LAKEVILLE

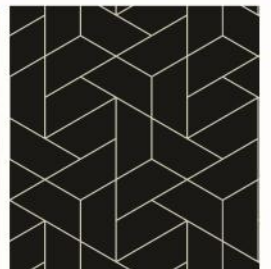
8485 WEST 210TH STREET, SUITE D, LAKEVILLE, MN 55044



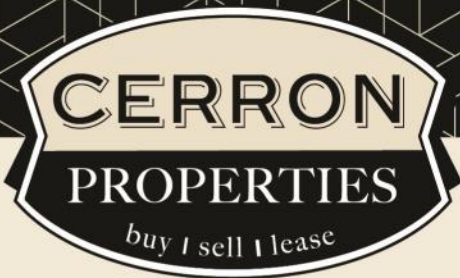
FOR LEASE | OFFICE SHOWROOM w/DRIVE-IN DOOR



CERRON Commercial Properties, LLC | 21476 Grenada Avenue | Lakeville, MN 55044  
[WWW.CERRON.COM](http://WWW.CERRON.COM)







CERRON Commercial Properties, LLC  
21476 Grenada Avenue  
Lakeville, MN 55044  
[www.CERRON.com](http://www.CERRON.com)

## ■ PROPERTY HIGHLIGHTS

- Approx. 2,376 SF
- Office Showroom Space with Drive-In Door (8'x10')
- Private Restroom
- Zoned C-3 (General Commercial District)
- Ample parking
- Excellent visibility & proximity to downtown Lakeville
- NW side of building with patio and private entrance
- Available February 1, 2026
- \$2,300/month gross lease rate



# OFFICE / SHOWROOM NEAR DOWNTOWN LAKEVILLE

8485 WEST 210TH STREET, SUITE D, LAKEVILLE, MN 55044

FOR LEASE | OFFICE SHOWROOM w-DRIVE-IN DOOR



DISCLAIMER: The information contained herein is deemed reliable but is not guaranteed. We have not verified its accuracy nor do we make any warranty or representation about it. You and your tax and legal advisors should conduct your own investigation of the property and transaction.



For more information,  
please contact:  
**Roz Peterson**  
612.708.5281  
[rozp@cerron.com](mailto:rozp@cerron.com)

# OFFICE / SHOWROOM NEAR DOWNTOWN LAKEVILLE

8485 WEST 210TH STREET, SUITE D, LAKEVILLE, MN 55044

## SUMMARY



### ■ TRAFFIC COUNTS:

- 6,446 vpd @ 210th Street West (CR 50)

### ■ DEMOGRAPHICS:

	1 Mile	3 Mile	5 Mile
Population	3,118	12,286	33,563
Median HH Income	\$72,836.33	\$92,333.18	\$102,030.26
Avg. HH Income	\$79,379.00	\$98,061.27	\$106,033.84

DISCLAIMER: The information contained herein is deemed reliable but is not guaranteed. We have not verified its accuracy nor do we make any warranty or representation about it. You and your tax and legal advisors should conduct your own investigation of the property and transaction.



For more information,  
please contact:

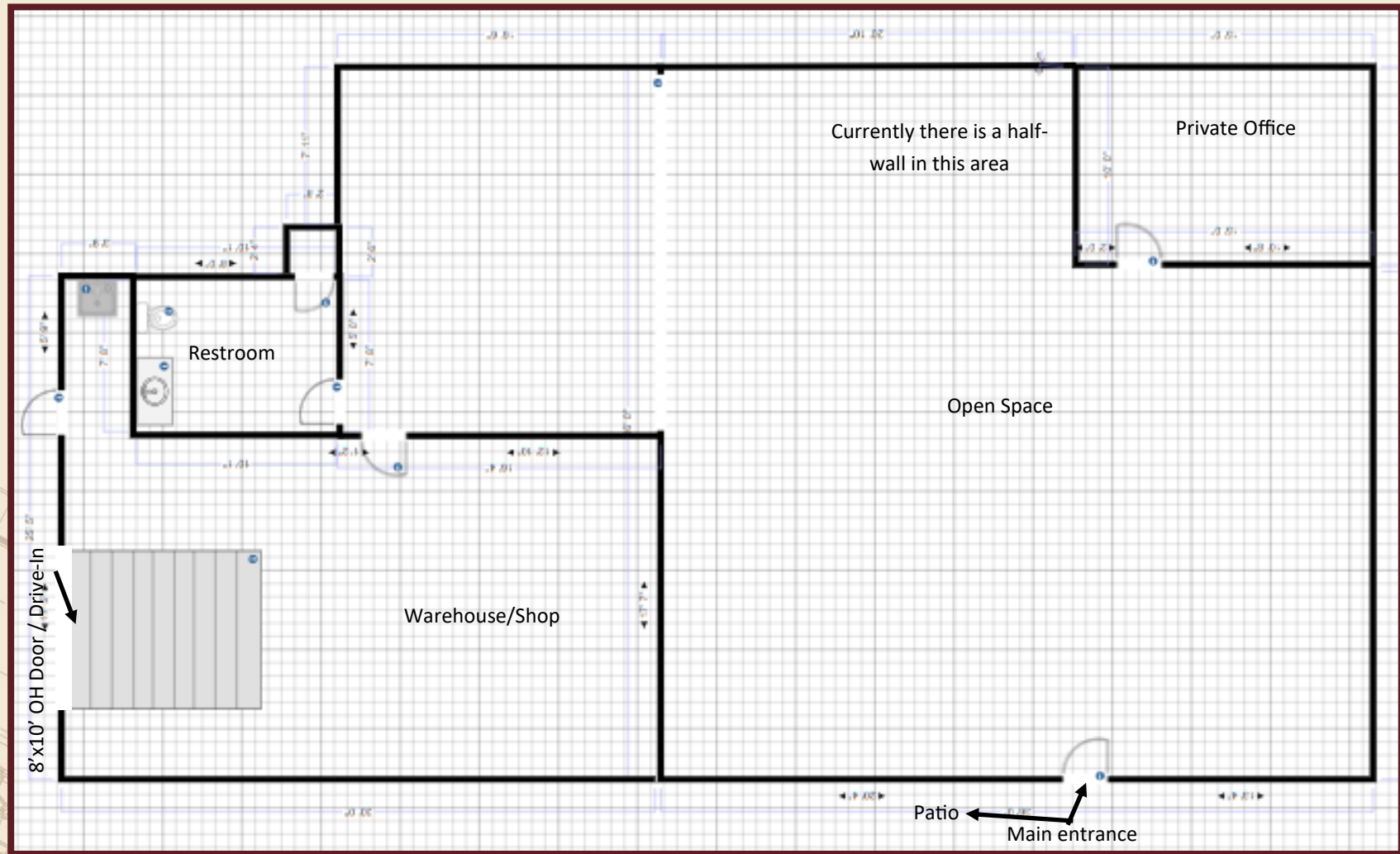
**Roz Peterson**  
**612.708.5281**  
rozp@cerron.com



## FLOOR PLAN

# OFFICE / SHOWROOM NEAR DOWNTOWN LAKEVILLE

8485 WEST 210TH STREET, SUITE D, LAKEVILLE, MN 55044



DISCLAIMER: The information contained herein is deemed reliable but is not guaranteed. We have not verified its accuracy nor do we make any warranty or representation about it. You and your tax and legal advisors should conduct your own investigation of the property and transaction.



For more information,  
please contact:  
**Roz Peterson**  
612.708.5281  
rozp@cerron.com

## PHOTOS

# OFFICE / SHOWROOM NEAR DOWNTOWN LAKEVILLE

8485 WEST 210TH STREET, SUITE D, LAKEVILLE, MN 55044



DISCLAIMER: The information contained herein is deemed reliable but is not guaranteed. We have not verified its accuracy nor do we make any warranty or representation about it. You and your tax and legal advisors should conduct your own investigation of the property and transaction.



For more information,  
please contact:

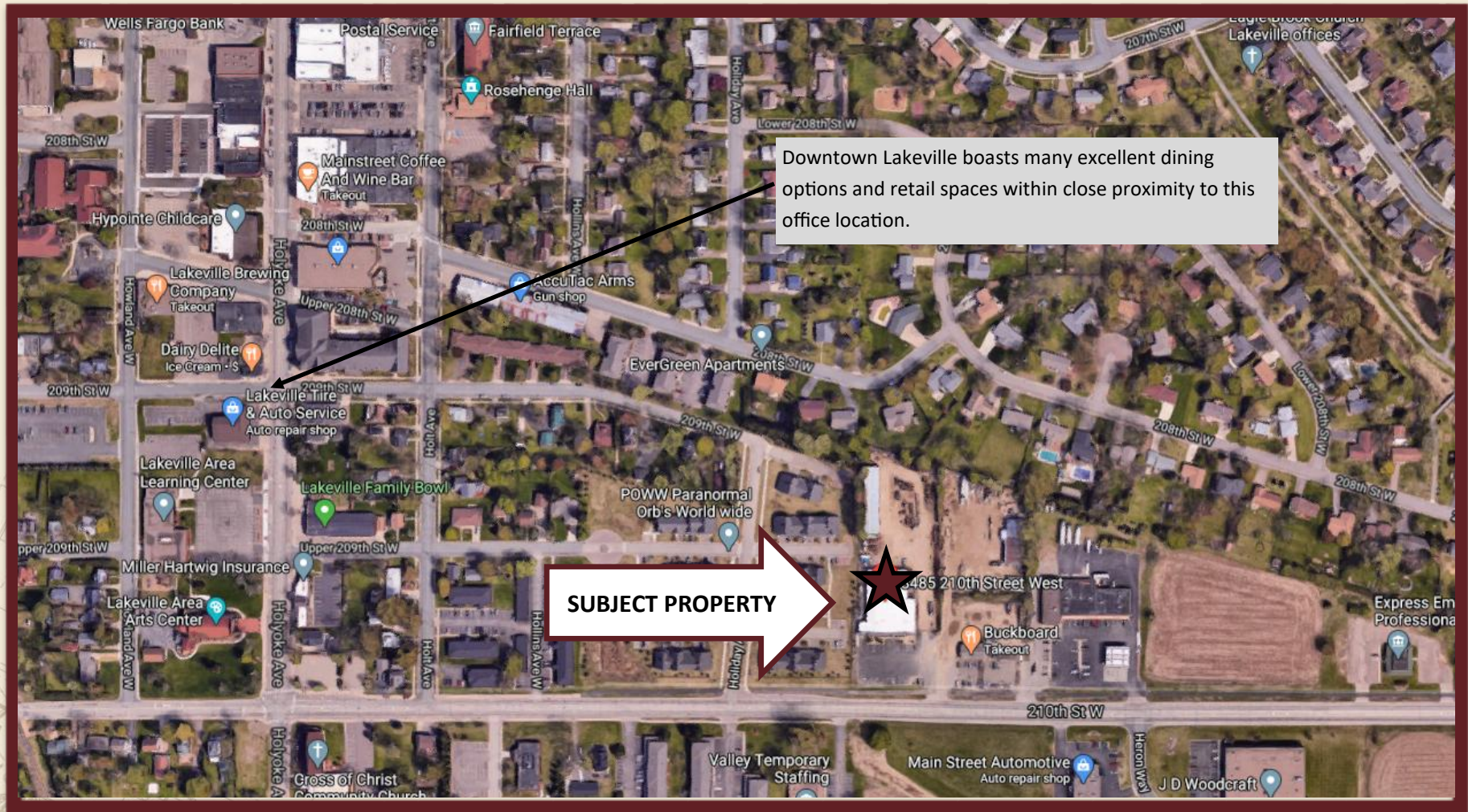
**Roz Peterson**  
612.708.5281  
rozp@cerron.com



## AREA MAP

# OFFICE / SHOWROOM NEAR DOWNTOWN LAKEVILLE

8485 WEST 210TH STREET, SUITE D, LAKEVILLE, MN 55044



DISCLAIMER: The information contained herein is deemed reliable but is not guaranteed. We have not verified its accuracy nor do we make any warranty or representation about it. You and your tax and legal advisors should conduct your own investigation of the property and transaction.



For more information,  
please contact:  
**Roz Peterson**  
612.708.5281  
rozp@cerron.com