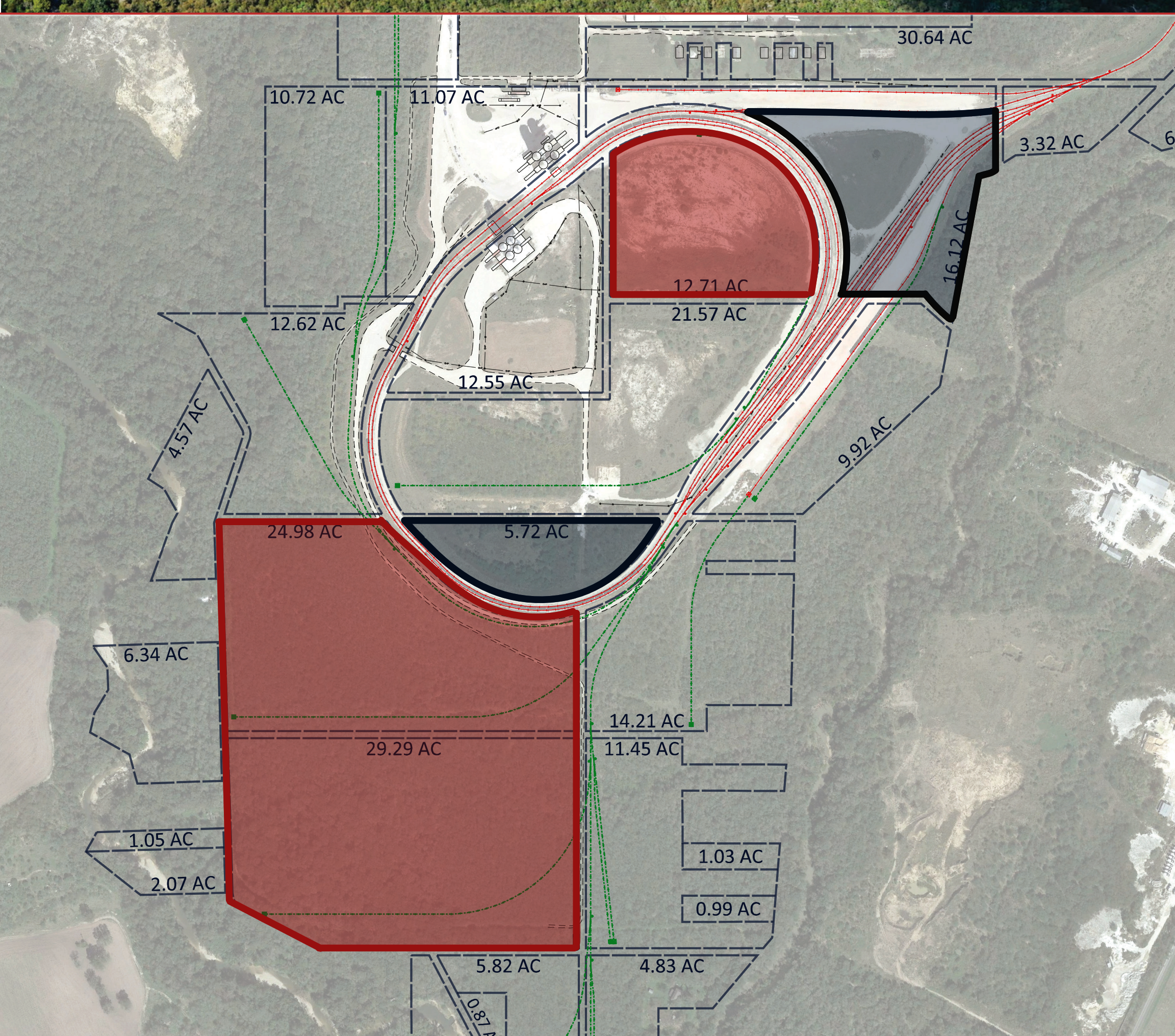




BUILD READY ACRE SITE

(FOR LEASE, D/B OR BUILD-TO-SUIT)



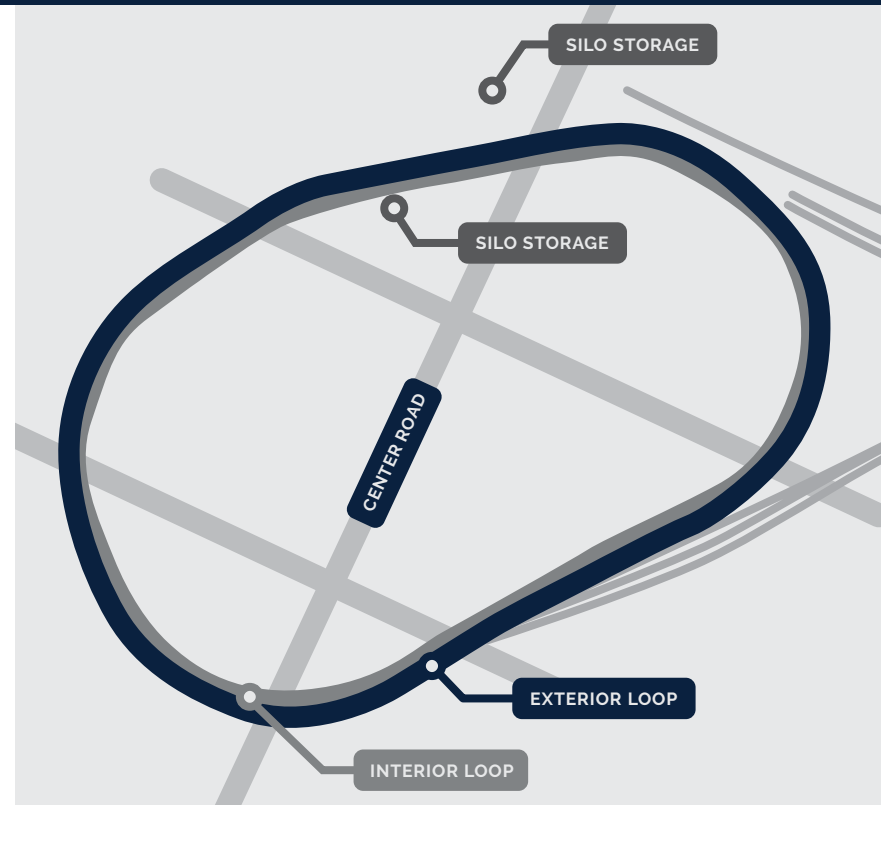
12070 CENTRAL RD, SAN ANTONIO, TX 78223
USRL SAN ANTONIO

PROPERTY DETAILS

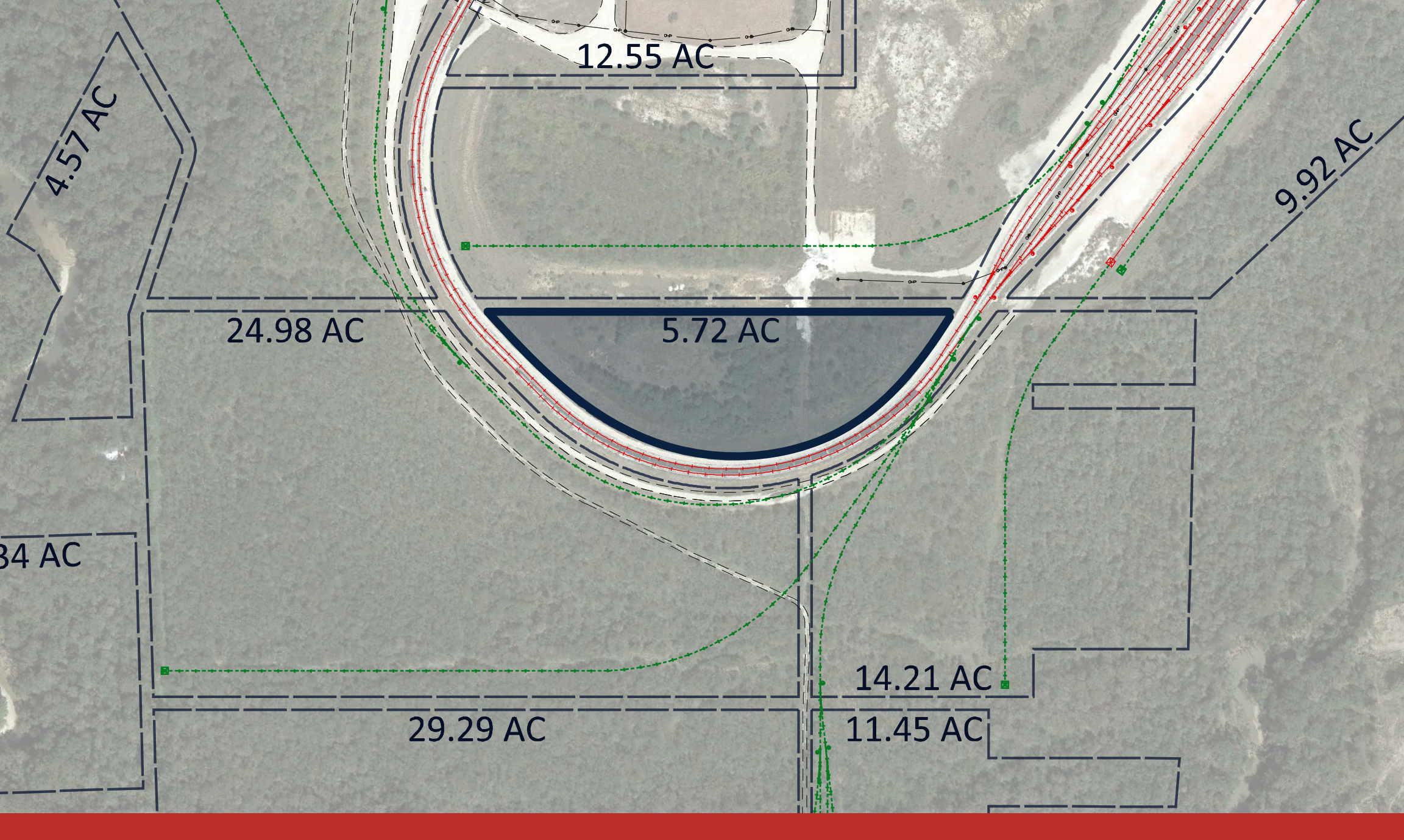
- Lots Divisible
- Platted Lots Available

DEVELOPMENT INFO

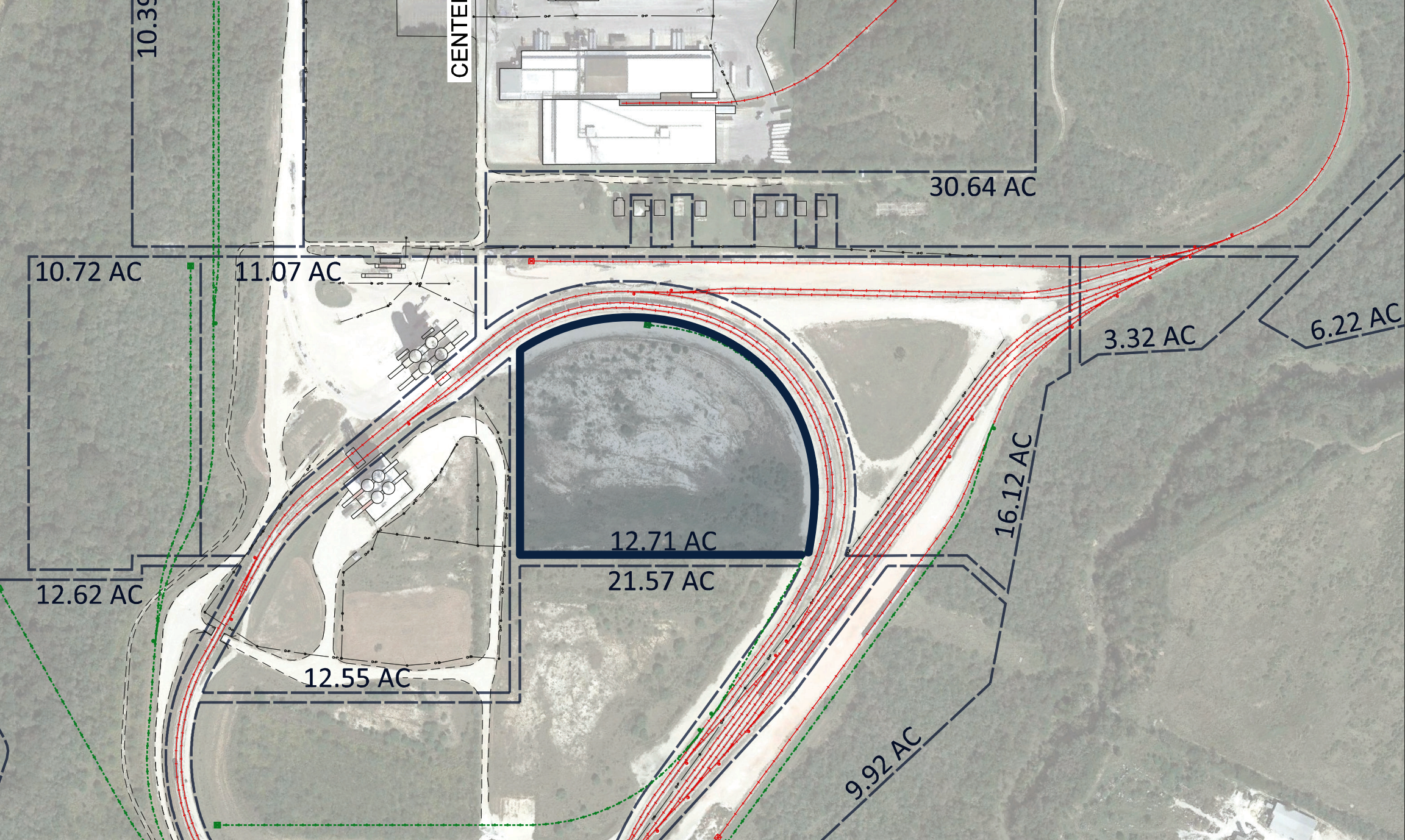
- Dual Rail Service Offering
Competitive Pricing (UP & BNSF)
- State-of-the-Art Rail Terminal
& Transload Facility
- Easy Access via I35 and I37



BUILD READY 5.72 ACRE PLOT



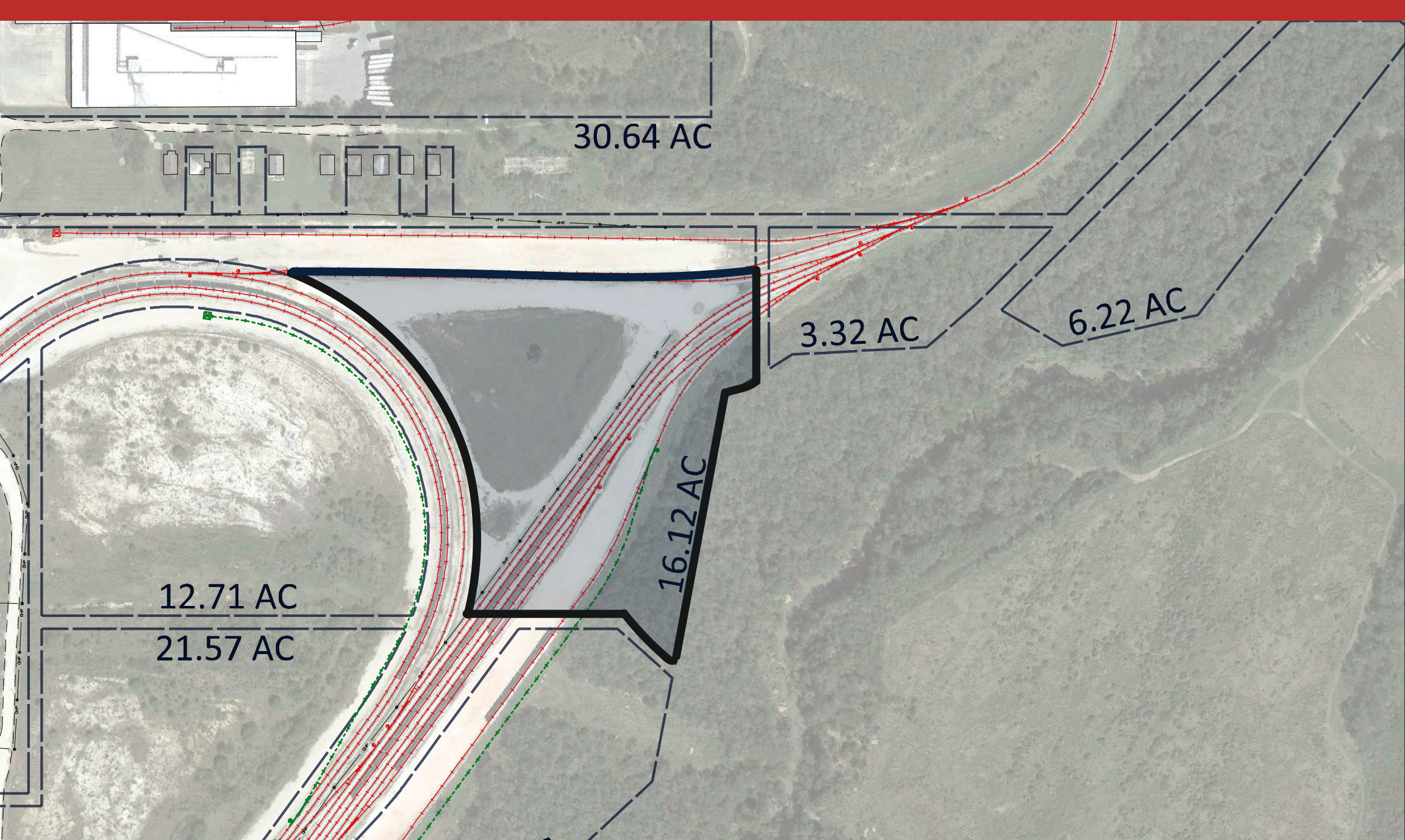
BUILD READY 12.71 ACRE PLOT



BUILD READY 24.98 & 29.29 ACRE PLOTS



BUILD READY 16.12 ACRE PLOT



UNITED STATES
RAIL & LOGISTICS

Leading the way in
Transloading, Rail Services,
and Facilities Management.