

# 2348 JERROLD AVENUE

FOR LEASE | FULL WAREHOUSE OPPORTUNITY W/ LARGE FENCED YARD

**TCP**  
TOUCHSTONE  
COMMERCIAL PARTNERS

  
**CITIVISION**  
COMMERCIAL REAL ESTATE



[WWW.TCPRE.COM](http://WWW.TCPRE.COM)

**ZACH HAUPERT** [zhaupert@tcpre.com](mailto:zhaupert@tcpre.com)  
D 415.539.1121 | C 415.812.1219

**MICHAEL SANBERG** [msanberg@tcpre.com](mailto:msanberg@tcpre.com)  
D 415.539.1103 | C 415.697.6088

**TREVOR GUDIM** [trevor@tcpre.com](mailto:trevor@tcpre.com)  
D 415.539.1122 | C 858.922.2632

**ED MAIELLO** [ed@citivisioncommercial.com](mailto:ed@citivisioncommercial.com)  
D 415.543.2002 | C 415.407.3523



# 2348 JERROLD AVENUE

## PROPERTY SUMMARY

### ADDRESS

2348 Jerrold Avenue, San Francisco, CA 94124

### AVAILABLE SPACE

Warehouse: +/- 12,000 Square Feet  
Fenced Yard / Parking: +/- 15,600 Square Feet

### RENTAL RATE

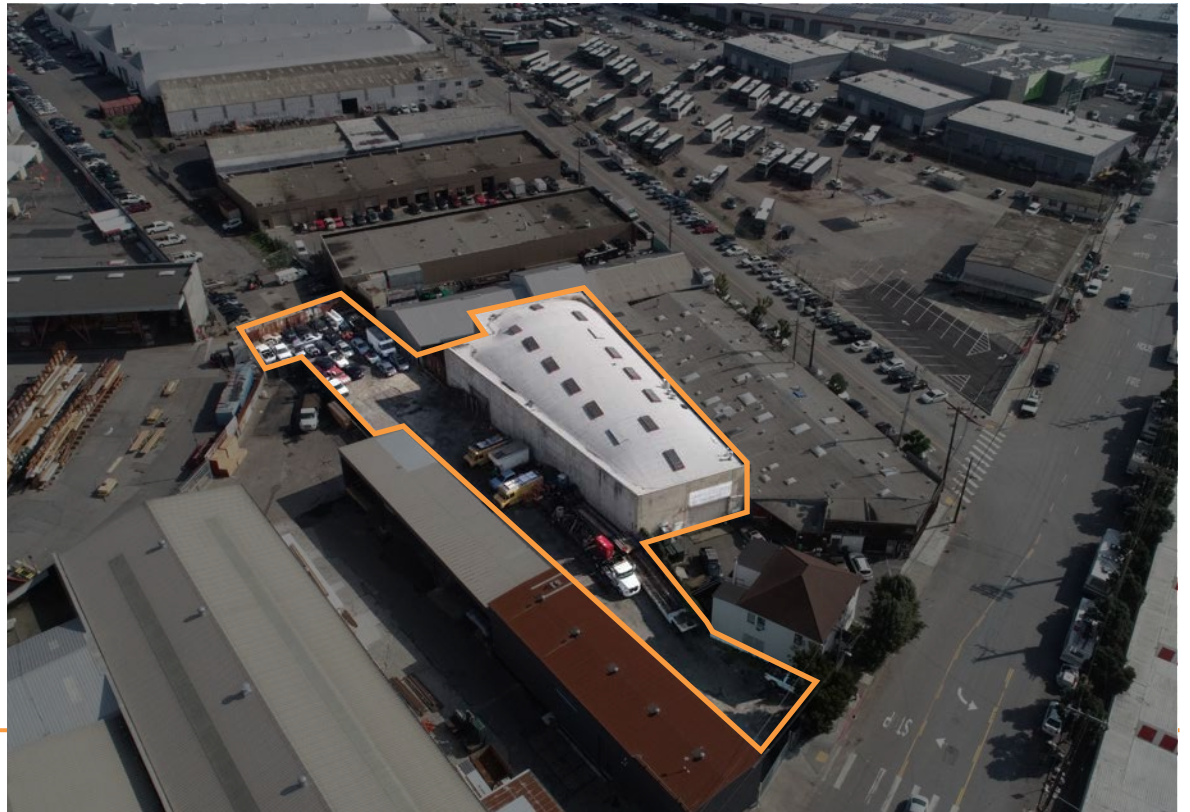
Negotiable

### AVAILABLE

Immediately

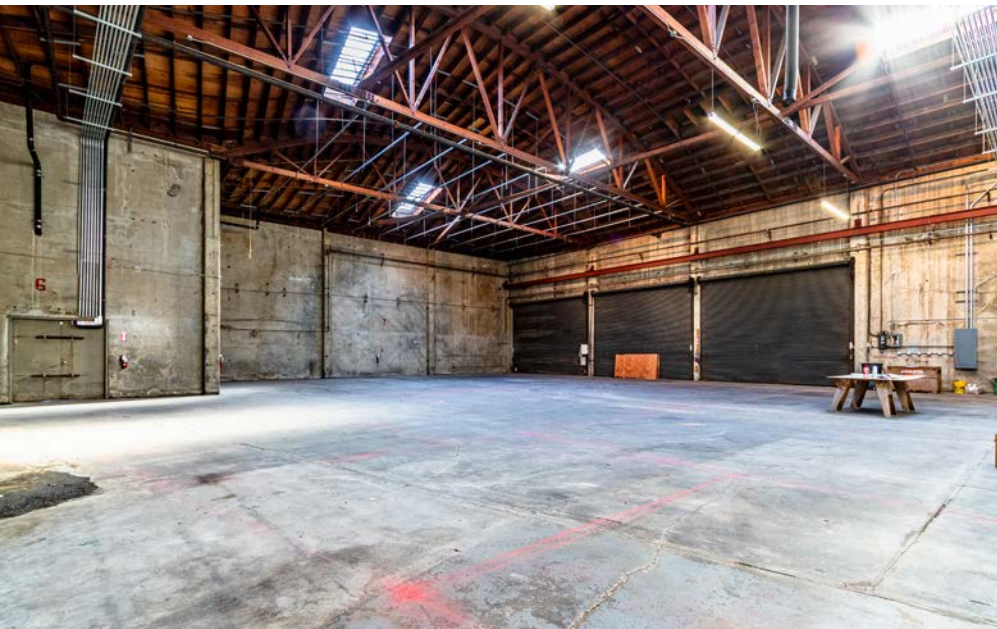
## BUILDING ATTRIBUTES

- + **HEAVY POWER: 1600 Amps / 480 Volts / 3-Phase**
- + Open Industrial Warehouse
- + One (1) 19.5' W x 14.5' H Drive-In Roll-Up Door
- + 33' High Ceilings
- + Skylights Throughout Building
- + Two (2) Restrooms
- + Fully Sprinklered
- + Demising Wall in Warehouse Can Be Removed





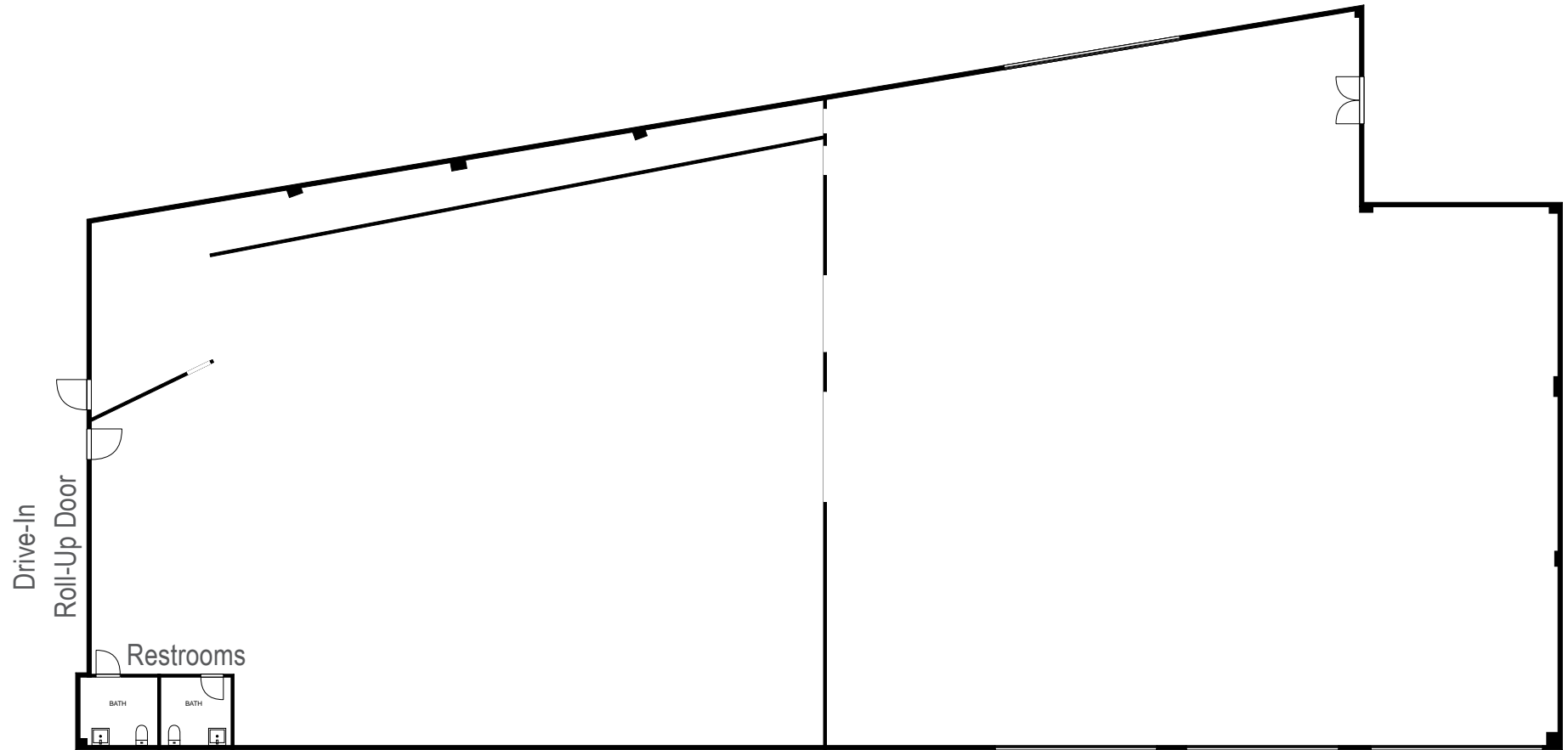
# 2348 JERROLD AVENUE



# 2348 JERROLD AVENUE

## Floor Plans

+/- 12,000 Square Feet



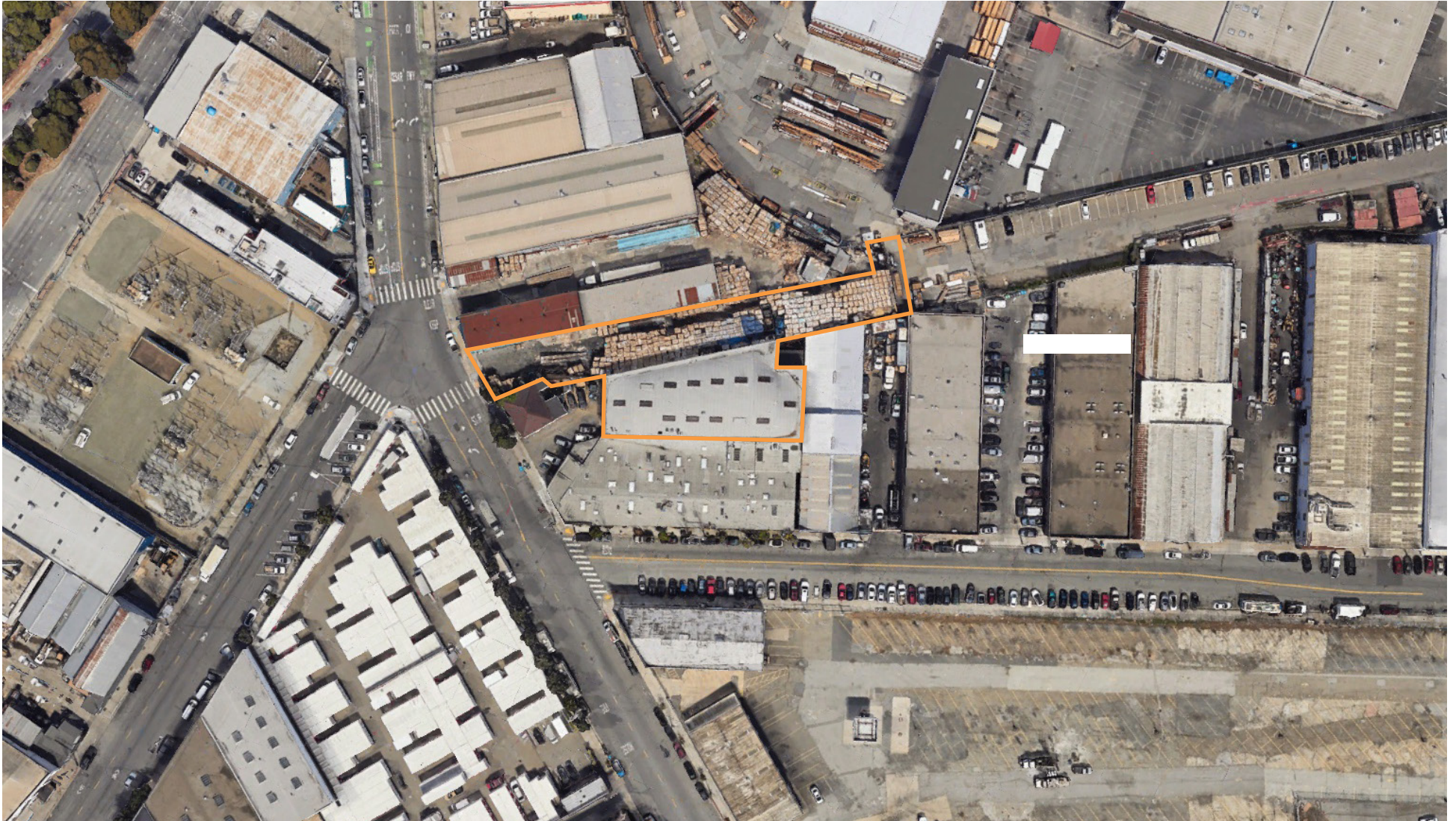


# 2348 JERROLD AVENUE

## Site Plan

Building: +/- 12,000 Square Feet

Lot: +/- 15,600 Square Feet





# 2348 JERROLD AVENUE

## LOCATION OVERVIEW

Desirable Industrial / Warehouse Space in Produce Market, walkable to nearby amenities, public transportation and to surrounding neighborhoods.



**09 MIN** to Ferry Plaza Muni  
**26 MIN** to Portrero Hill  
**37 MIN** to Cesar Chavez Bart



**10 MIN** to Mission District  
**14 MIN** to SOMA  
**17 MIN** to Financial District



**02 MIN** to 101 On-Ramp  
**06 MIN** to 280 On-Ramp  
**09 MIN** to 80 On-Ramp

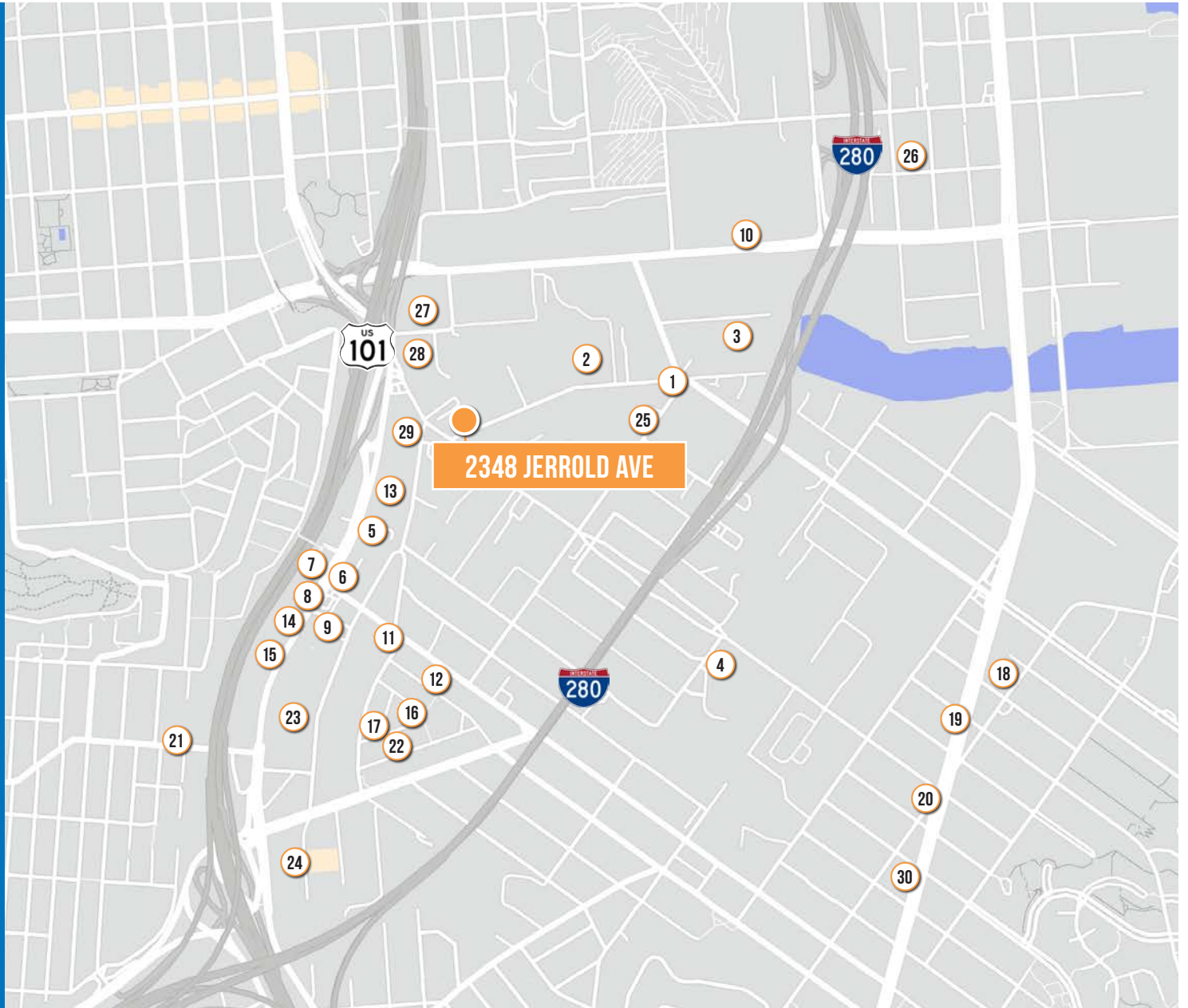




# 2348 JERROLD AVENUE

## NEARBY AMENITIES

- 1.....Kid Abelha Sanduiche
- 2..... United States Postal Service
- 3.....FedEx Ship Center
- 4..... Grubmarket, Inc
- 5..... Burger King
- 6..... The Old Clam House
- 7..... Bayshore Taqueria
- 8..... Domino's Pizza
- 9..... McDonald's
- 10..... Grand Seven Liquor & Deli
- 11..... The Chairman
- 12..... Feve Artisan Chocolatier
- 13..... BevMo!
- 14..... Silver Crest Donut Shop
- 15..... Jack in the Box
- 16..... Sequoia Sake
- 17..... Cellars 33
- 18..... Starbucks
- 19..... Constanso's
- 20..... All Good Pizza
- 21..... Barebottle Brewing Company
- 22..... Grumpy Cafe
- 23..... Lowe's Home Improvement
- 24..... Wingstop
- 25..... The Deli Lama
- 26..... Harmonic Brewing
- 27..... Caffè Duetto
- 28..... Public Storage
- 29..... Chevron
- 30..... Las Isletas Restaurant





# 2348 JERROLD AVENUE



HARMONIC BREWING



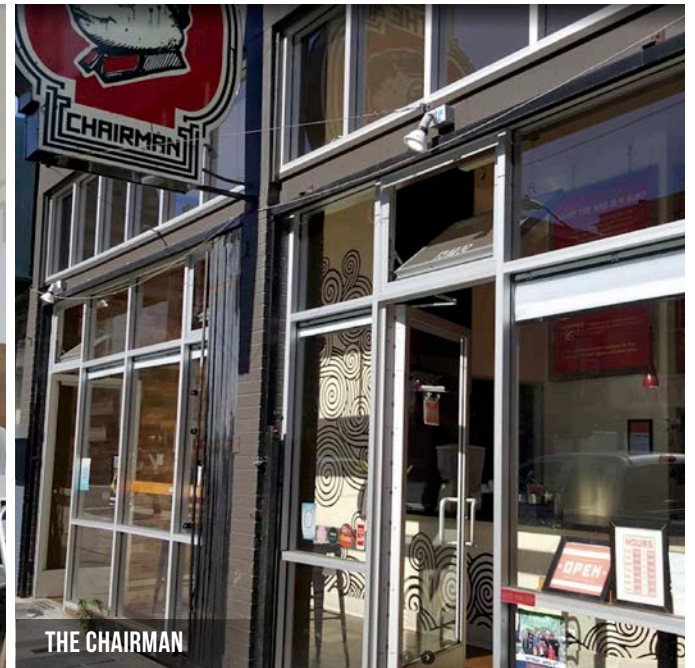
BAREBOTTLE BREWING CO.



OLD CLAM HOUSE



CAFE DUETTO



THE CHAIRMAN



# 2348 JERROLD AVENUE



**TCP**  
TOUCHSTONE  
COMMERCIAL PARTNERS

**CITIVISION**  
COMMERCIAL REAL ESTATE

## ZACH HAUPERT

D 415.539.1121 C 415.812.1219  
zhaupert@tcp.com DRE # 01822907

## MICHAEL SANBERG

D 415.539.1103 C 415.697.6088  
msanberg@tcp.com DRE # 01930041

## TREVOR GUDIM

D 415.539.1122 C 858.922.2632  
trevor@tcp.com DRE # 01979980

## ED MAIELLO

D 415.543.2002 C 415.407.3523  
ed@citivisioncommercial.com DRE # 00974529

This document has been prepared by Touchstone Commercial Partners for advertising and general information only. Touchstone Commercial Partners makes no guarantees, representations or warranties of any kind, expressed or implied, regarding the information including, but not limited to, warranties of content, accuracy and reliability. Any interested party should undertake their own inquiries as to the accuracy of the information. Touchstone Commercial Partners excludes unequivocally all inferred or implied terms, conditions and warranties arising out of this document and excludes all liability for loss and damages arising there from. This publication is the copyrighted property of Touchstone Commercial Partners and/or its licensor(s). ©2024. All rights reserved.

Corp. Lic. 01112906  
www.tcp.com