

# SINGLE-TENANT INDUSTRIAL FACILITY FOR SALE OR LEASE

501 Republic Circle, Birmingham, AL 35214



**JAKE BOTTCHER**  
205.873.5943  
jbottcher@jhberry.com

**EDWIN MOSS, SIOR, CCIM**  
205.529.1310  
emoss@jhberry.com

**SONNY POTTER**  
205.999.0923  
rspotter@jhberry.com

  
Commercial Real Estate

# 501 Republic Circle

Birmingham, AL 35214

## SINGLE-TENANT INDUSTRIAL FACILITY FOR SALE OR LEASE

### JH / Property Features

<b>BUILDING SIZE</b>	+/- 44,487 SF
<b>OFFICE SIZE</b>	13,579 SF
<b>WAREHOUSE</b>	30,908 SF Fully conditioned
<b>SITE SIZE</b>	+/- 2.76 Acres
<b>CONSTRUCTION</b>	PEMB w/ stone office
<b>CLEAR HEIGHT</b>	18'-20' clear
<b>LOADING</b>	Seven (7) dock-high doors
<b>DRIVE-IN DOORS</b>	One (1) drive-in door
<b>ELECTRICAL</b>	3-Phase; 4,000 AMPS
<b>ROOF</b>	Recently replaced

### TRAVEL TIMES



**11 Miles**  
TO AIRPORT  
B'ham-Shuttlesworth  
Int'l



**2.5 Miles**  
TO HWY 1-22/I-65  
Regional Interstate  
access



**95 Miles**  
TO PORT  
Port of Hunstville  
Inland Port



**5 Miles**  
TO DOWNTOWN  
BHM  
Central Business  
District



### PRICING:

## Call for pricing

**JAKE BOTTCER**  
205.873.5943  
jbottcher@jhberr.com

**EDWIN MOSS, SIOR, CCIM**  
205.529.1310  
emoss@jhberr.com

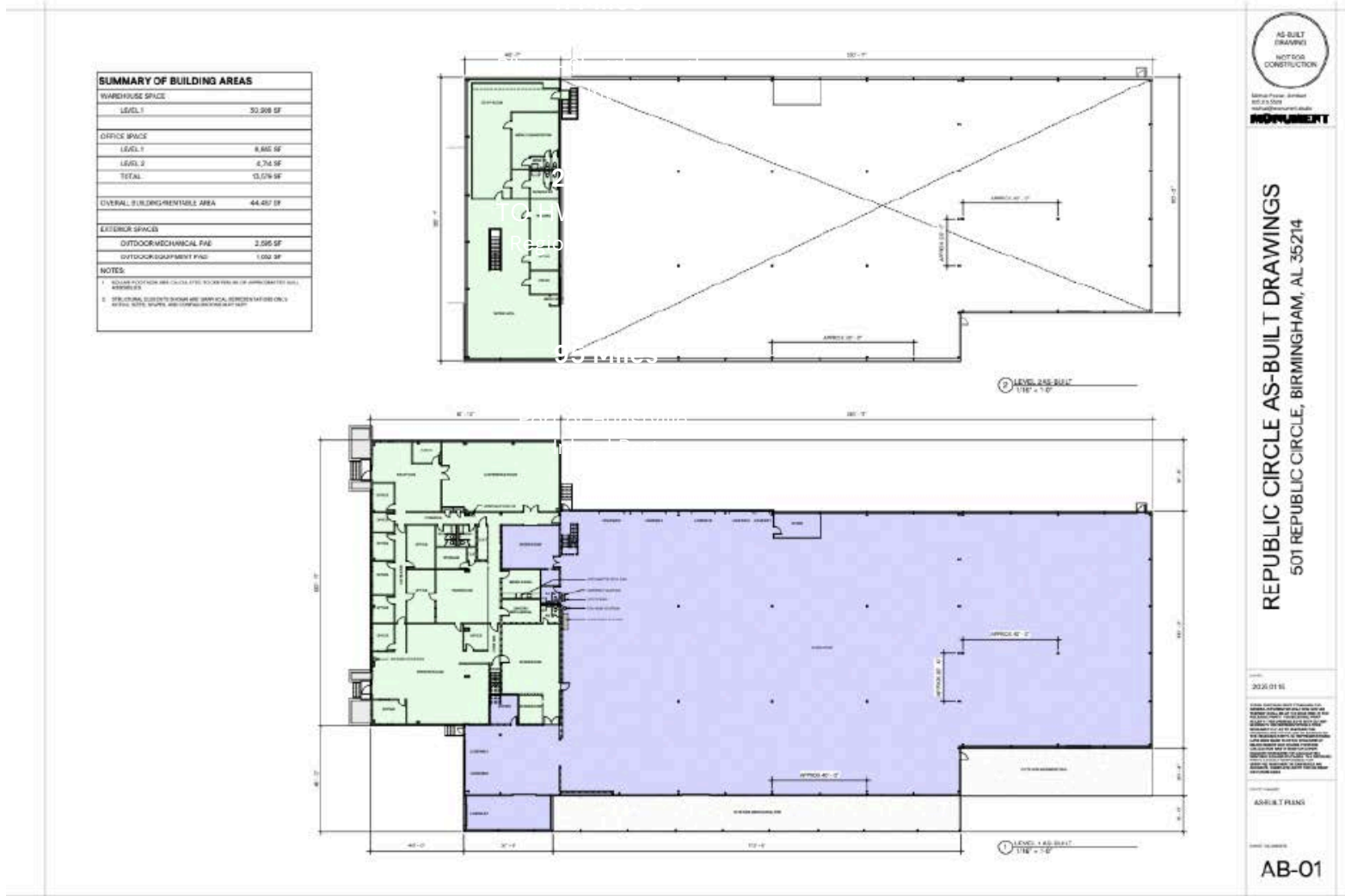
**SONNY POTTER**  
205.999.0923  
rspotter@jhberr.com

# 501 Republic Circle

Birmingham, AL 35214

## SINGLE-TENANT INDUSTRIAL FACILITY FOR SALE OR LEASE

### JHB / Building Overview



**PRICING:**  
Call for pricing

**JAKE BOTTCHE**  
205.873.5943  
jbottcher@jhberr.com

**EDWIN MOSS, SIOR, CCIM**  
205.529.1310  
emoss@jhberr.com

**SONNY POTTER**  
205.999.0923  
rspotter@jhberr.com

# Commercial Real Estate is Complex. We Simplify it.



Visit [jhberry.com](http://jhberry.com) to learn more.

**JAKE BOTTCHE**  
205.873.5943  
[jbottcher@jhberry.com](mailto:jbottcher@jhberry.com)

**EDWIN MOSS, SIOR, CCIM**  
205.313.5943  
[emoss@jhberry.com](mailto:emoss@jhberry.com)

**SONNY POTTER**  
205.313.4367  
[spotter@jhberry.com](mailto:spotter@jhberry.com)