



# COMMERCE 429

## LOGISTICS PARK

SCAN  
FOR MORE  
INFORMATION



1290 Ocoee-Apopka Rd  
Ocoee, FL 32218

# AVAILABLE IMMEDIATELY

# 185,824 SF



# CBRE

## Contact Us:

David Murphy  
Vice Chairman  
+1 407 404 5020  
[david.murphy@cbre.com](mailto:david.murphy@cbre.com)

Monica Wonus  
Executive Vice President  
+1 407 404 5042  
[monica.wonus@cbre.com](mailto:monica.wonus@cbre.com)

Gaby Gissy  
Associate  
+1 407 404 5012  
[gaby.gissy@cbre.com](mailto:gaby.gissy@cbre.com)

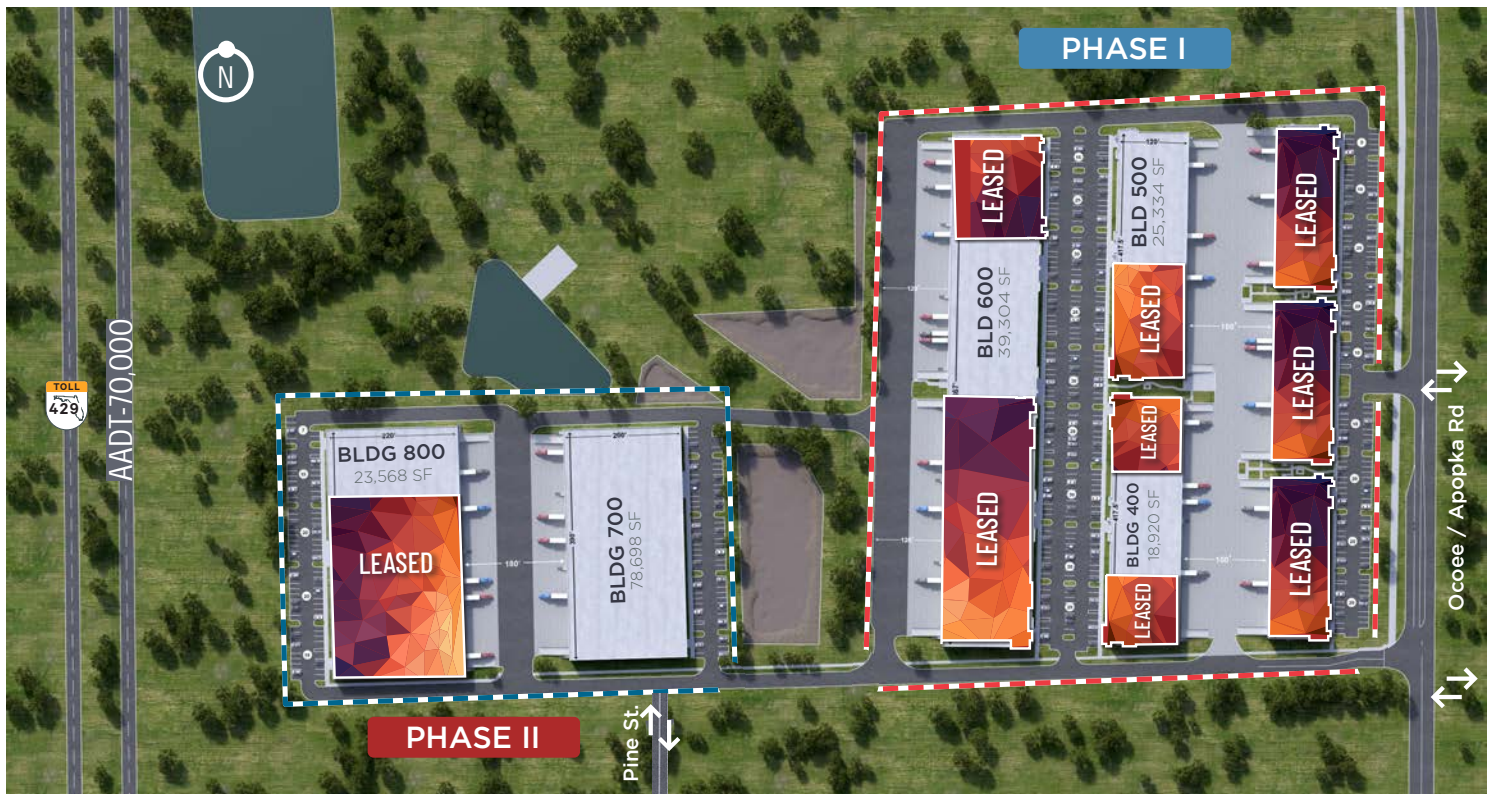
Lee Earle  
Client Services Specialist  
+1 407 404 5095  
[lee.earle@cbre.com](mailto:lee.earle@cbre.com)

# PROPERTY OVERVIEW



Commerce 429 is your future-proof decision, convenient to Orlando's Beltway and Florida's Turnpike, and offers a host of purposeful design features.

This park provides a significant advantage with small to medium sized buildings, thus offering a wide variety of configurations.



## NOW AVAILABLE!



12,750 - 78,698 SF  
AVAILABLE



IMMEDIATE ACCESS  
TO 429



28' - 32'  
CLEAR HEIGHT



AMPLE  
EMPLOYEE PARKING



## Building 400: 18,920 SF

451 Prosperity Farm Road

BUILDING 400	
Total SF	18,920 SF
Office SF	1,107 SF
Clear Height	28'
Building Depth	120'
Column Space	52' x 60'
Dock Doors	11
Drive-In Doors	0
Truck Court	150' (Shared)
Parking	25 Spaces
Sprinklers	ESFR
Lighting	LED (Motion)
Power	1,200 amp main service at 277/480v
Fiber	AT&T



## Building 500: 12,750 - 25,334 SF

453 Prosperity Farm Road

BUILDING 500	
Total SF	25,334 SF
Office SF	1,107 SF
Clear Height	28'
Building Depth	120'
Column Space	52' x 60'
Dock Doors	27
Drive-In Doors	2
Truck Court	150' (Shared)
Parking	40 Spaces
Sprinklers	ESFR
Lighting	LED (Motion)
Power	1,200 amp main service at 277/480v
Fiber	AT&T



## Building 600: 39,304 SF

475 Prosperity Farm Road

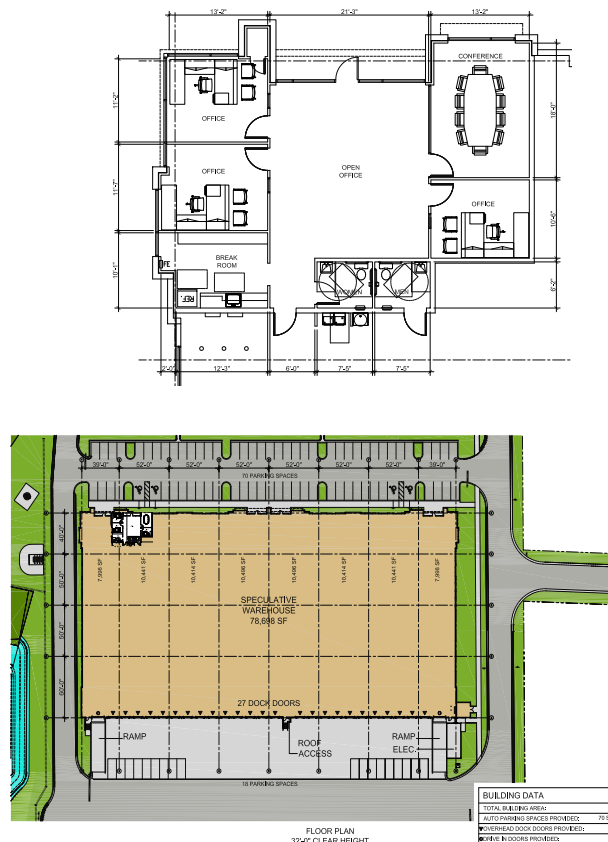
BUILDING 600	
Total SF	39,304 SF
Office SF	1,578 SF
Clear Height	32'
Building Depth	150'
Column Space	52' x 45'
Dock Doors	16
Drive-In Doors	1
Truck Court	120'
Parking	35 Spaces
Sprinklers	ESFR
Lighting	LED (Motion)
Power	1,600 amp remaining at 277/480v
Fiber	AT&T



## Building 700: 18,439 - 78,698 SF

525 Prosperity Farm Road

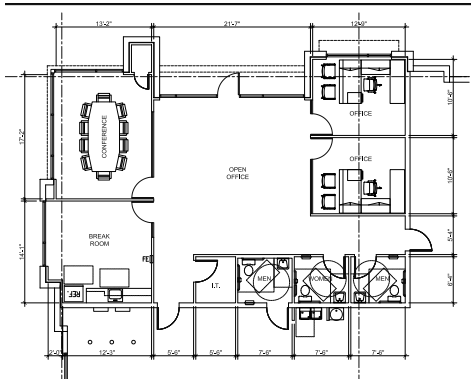
BUILDING 700	
Total SF	78,698 SF
Office SF	1,626 SF
Clear Height	32'
Building Depth	200'
Column Space	52' x 50'
Dock Doors	25
Drive-In Doors	4
Truck Court	180'
Parking	70 Spaces
Sprinklers	ESFR
Lighting	LED (Motion)
Power	1,600 amp main service at 277/480v
Fiber	AT&T



# Building 800: 23,568 SF

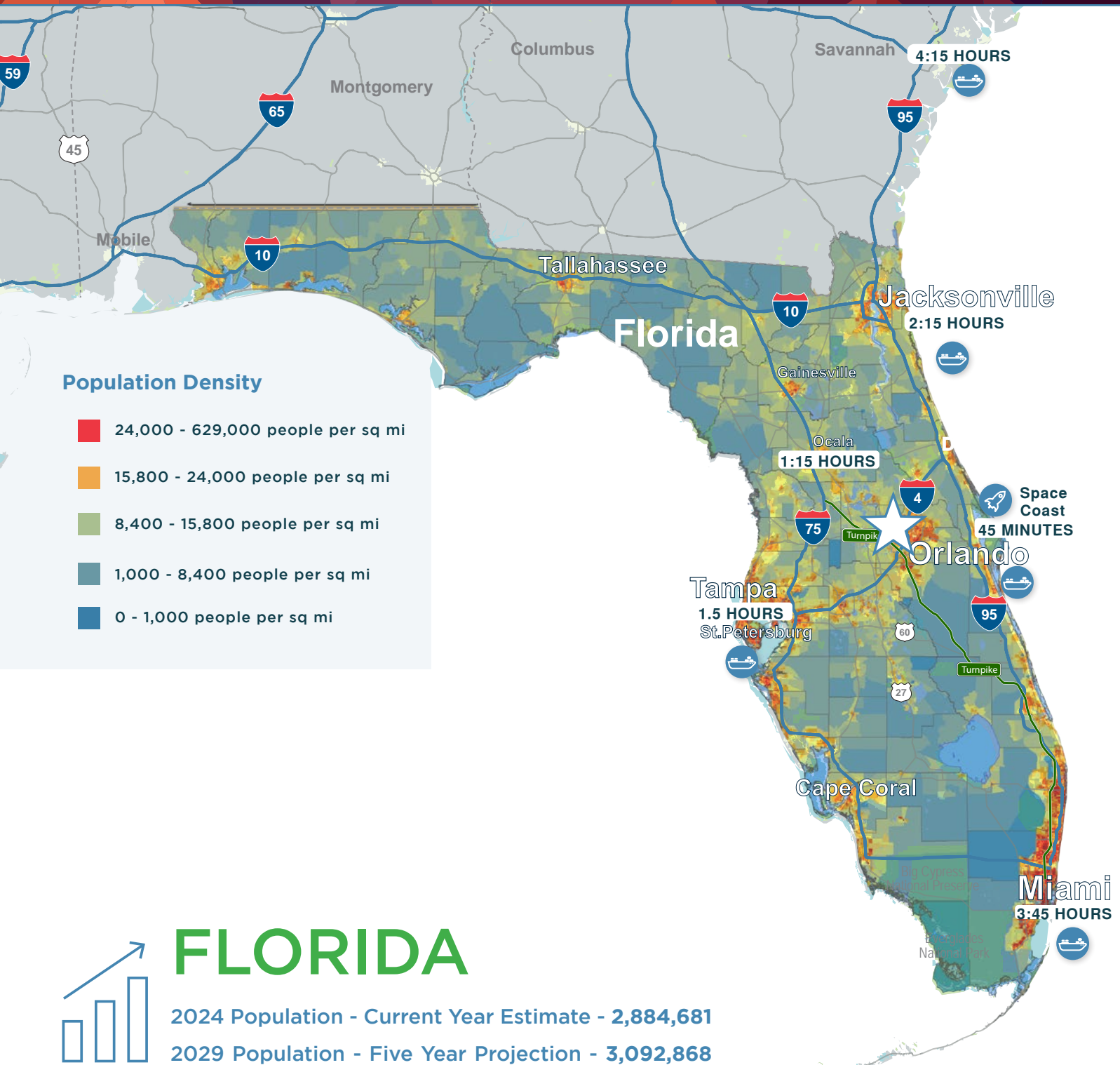
537 Prosperity Farm Road

BUILDING 800	
Total SF	23,568 SF
Office SF	1,578 SF
Clear Height	32'
Building Depth	220'
Column Space	52' x 40'
Dock Doors	6
Drive-In Doors	1
Truck Court	180'
Parking	20 Spaces
Sprinklers	ESFR
Lighting	LED (Motion)
Power	1,600 amp main service at 277/480v
Fiber	AT&T



# STRATEGIC LOCATION

With unparalleled connectivity to major routes—less than 5 miles from Florida's Turnpike (via SR-429)—this is an ideal site for local and regional distribution.









# COMMERCE 429

## LOGISTICS PARK

1290 Ocoee Apopka Rd | Ocoee, FL 32218



### Contact Us:

David Murphy  
Vice Chairman  
+1 407 404 5020  
[david.murphy@cbre.com](mailto:david.murphy@cbre.com)

Monica Wonus  
Executive Vice President  
+1 407 404 5042  
[monica.wonus@cbre.com](mailto:monica.wonus@cbre.com)

Gaby Gissy  
Associate  
+1 407 404 5012  
[gaby.gissy@cbre.com](mailto:gaby.gissy@cbre.com)

Lee Earle  
Client Services  
+1 407 404 5095  
[lee.earle@cbre.com](mailto:lee.earle@cbre.com)

© 2025 CBRE, Inc. All rights reserved. This information has been obtained from sources believed reliable, but has not been verified for accuracy or completeness. You should conduct a careful, independent investigation of the property and verify all information. Any reliance on this information is solely at your own risk. CBRE and the CBRE logo are service marks of CBRE, Inc. All other marks displayed on this document are the property of their respective owners, and the use of such logos does not imply any affiliation with or endorsement of CBRE. Photos herein are the property of their respective owners. Use of these images without the express written consent of the owner is prohibited.



# CBRE