

SUPER VACANT LAND REAL ESTATE OPPORTUNITIES ESTATE SALE

Panama City - Bay County, Florida - Northwest Florida

12 VACANT LAND PARCELS AVAILABLE

From .72± Acres up to 130± Acres Available

Waterfront and Interior Parcels

North Bay Frontage

Deer Point Lake Frontage

Highway 2321 and Deer Point Dam Area

Prices from \$30,000 and Up

EXCELLENT SITES

For a Single Family Home or Several Single Family Homes

EXCELLENT OPPORTUNITY

**For Medium to Large Waterfront Residential and Mixed Use
Developments**

FIRST TIME OFFERED ON THE OPEN MARKET

NOW is your opportunity to purchase your dream property

ALL PARCELS PRICED TO SELL!

CHARLIE HAAS



850-896-2240

charlie.haas@countsrealestate.com



Phone: 850-248-3640

Fax: 850-248-3624

**3009 Hwy 77, Suite H
Panama City, Florida 32405**

JIM EVERITT



850-814-9924

jimeveritt46@gmail.com

SUPER VACANT LAND REAL ESTATE OPPORTUNITIES

ESTATE SALE - 12 Vacant Land Parcels Available

Waterfront (North Bay and Deer Point Lake) and Interior Parcels
From .72± Acres up to 130± Acres



CHARLIE HAAS



850-896-2240

charlie.haas@countsrealestate.com



Phone: 850-248-3640

Fax: 850-248-3624

3009 Hwy 77, Suite H
Panama City, Florida 32405

JIM EVERITT



850-814-9924

jimeveritt46@gmail.com

Information contained herein was obtained from sources believed reliable; however, Counts Real Estate Group, Inc. makes no guarantees, warranties or representations as to the completeness or accuracy thereof. This presentation of the property is submitted subject to errors, omissions, change of price or conditions, prior sale or lease, or withdrawal without notice. 1-29-2020

SUPER VACANT LAND REAL ESTATE OPPORTUNITIES
ESTATE SALE - North Bay - Development Opportunity
Highway 2321 - Panama City - Bay County - Northwest Florida



SITE 1 - ~~\$350,000.00~~ **NOW! \$250,000 \$210,000** - 1.5± Acres - North Bay (165± FT. W by 400± Ft. D)

SITE 2 - ~~\$2,200,000.00~~ **NOW! \$1,980,000** - 46.5± Acres; North Bay and McKitchen's Bayou Frontage

SITE 2A - \$350,000.00 - 3.5± Acres (Bait Shop Area; Size and dimensions to be determined)

UTILITIES: Available - City Of Lynn Haven, Florida (Must be annexed)

ZONING: Site 1: Residential (R1) - Bay County; Site 2: Agriculture (AG2) – Bay County
 Would require annexation into City of Lynn Haven for Mixed Use.

NOTE: Power Line is planned to be relocated adjacent to Highway 2321

CHARLIE HAAS



850-896-2240

charlie.haas@countsrealestate.com



Phone: 850-248-3640

Fax: 850-248-3624

3009 Hwy 77, Suite H
 Panama City, Florida 32405

JIM EVERITT



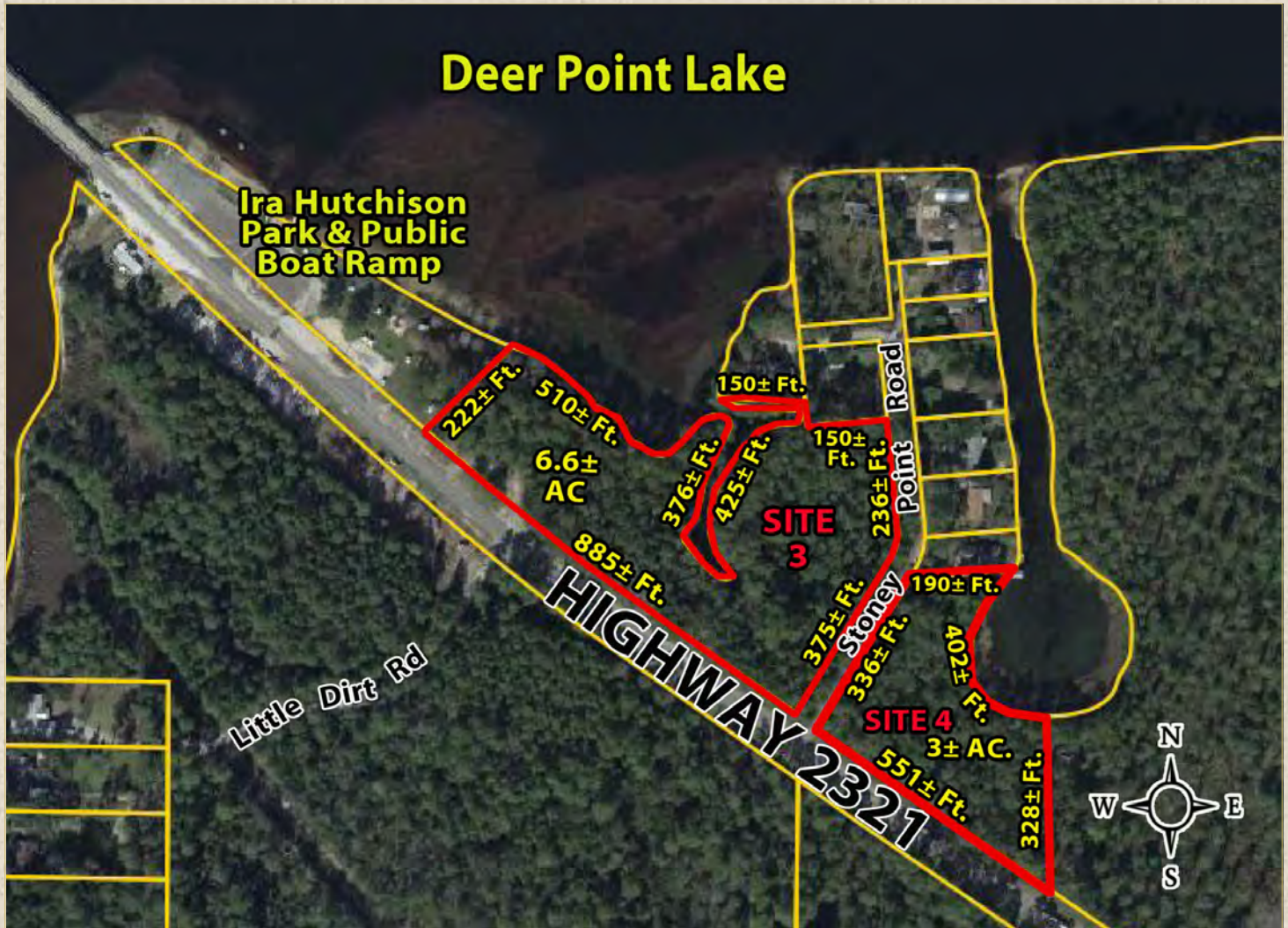
850-814-9924

jimeveritt46@gmail.com

SUPER VACANT LAND REAL ESTATE OPPORTUNITIES

ESTATE SALE - Deer Point Lake - Highway 2321

Panama City - Bay County - Northwest Florida



SITE 3 - ~~\$295,000.00~~ **NOW! \$265,500** - 6.6± Acres

SITE 4 - ~~\$225,000.00~~ **NOW! \$202,500** - 3± Acres

UTILITIES: Available - City Of Lynn Haven, Florida (Must be annexed)

ZONING: Agriculture/ Timberland (AG-2) - Bay County. Would require annexation into City of Lynn Haven for Mixed Use.

CHARLIE HAAS



850-896-2240

charlie.haas@countsrealestate.com



Phone: 850-248-3640

Fax: 850-248-3624

3009 Hwy 77, Suite H
Panama City, Florida 32405

JIM EVERITT



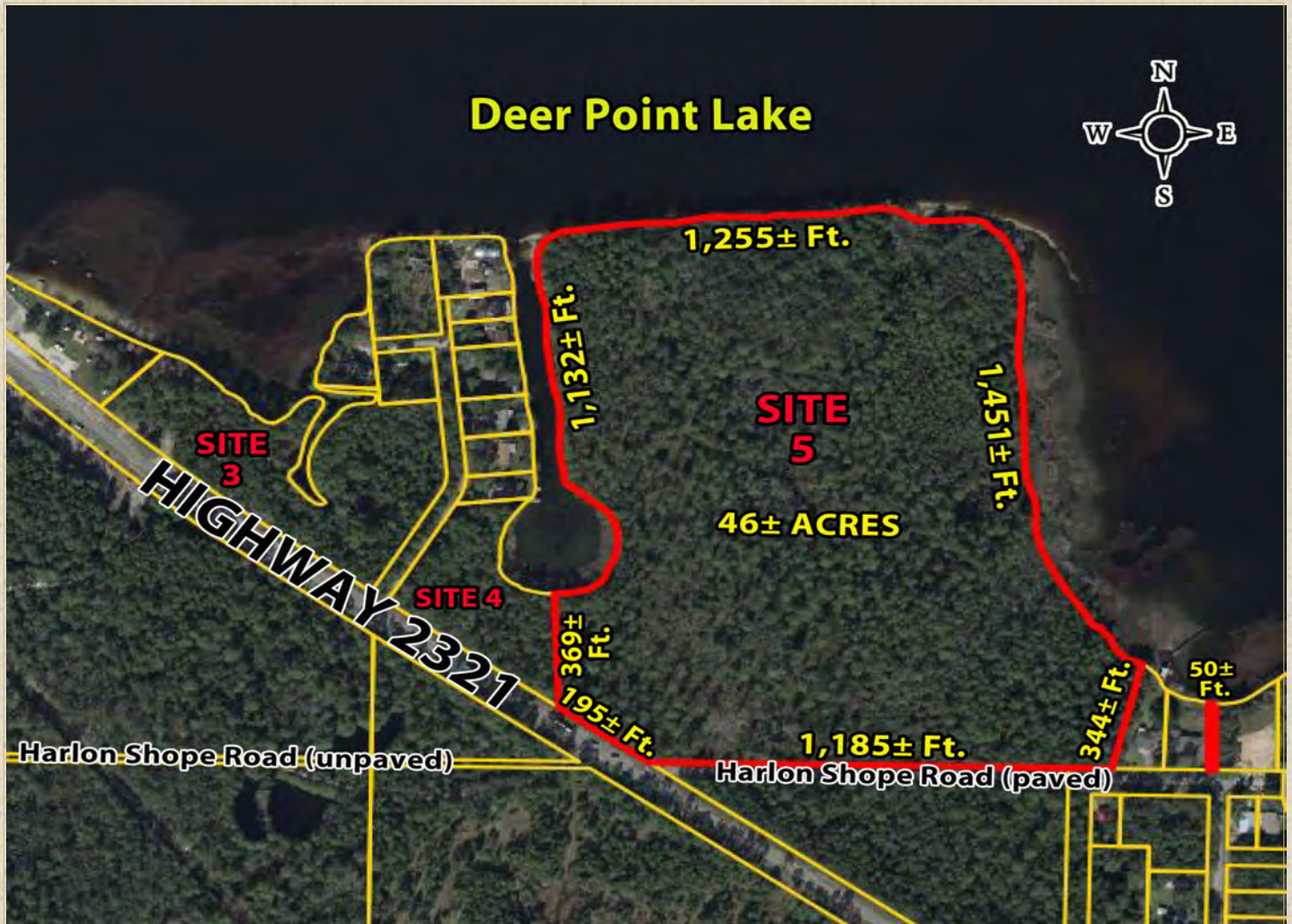
850-814-9924

jimeveritt46@gmail.com

Information contained herein was obtained from sources believed reliable; however, Counts Real Estate Group, Inc. makes no guarantees, warranties or representations as to the completeness or accuracy thereof. This presentation of the property is submitted subject to errors, omissions, change of price or conditions, prior sale or lease, or withdrawal without notice. 1-29-2020

SUPER VACANT LAND REAL ESTATE OPPORTUNITIES

ESTATE SALE - Deer Point Lake - 46± Acres
Panama City - Bay County - Northwest Florida



SITE 5 - ~~\$1,400,000.00~~ **NOW! \$1,100,000 \$900,000** - 46± Acres; 2,706± Ft on Deer Point Lake; 1,132± Ft on the Canal

UTILITIES: Water and Sewer Available - City of Lynn Haven (would require annexation)

ZONING: Residential (R-1) - Bay County; Would require annexing into City of Lynn Haven for Mixed Use

CHARLIE HAAS



850-896-2240

charlie.haas@countsrealestate.com



Phone: 850-248-3640

Fax: 850-248-3624

3009 Hwy 77, Suite H
Panama City, Florida 32405

JIM EVERITT



850-814-9924

jimeveritt46@gmail.com

Information contained herein was obtained from sources believed reliable; however, Counts Real Estate Group, Inc. makes no guarantees, warranties or representations as to the completeness or accuracy thereof. This presentation of the property is submitted subject to errors, omissions, change of price or conditions, prior sale or lease, or withdrawal without notice. 1-29-2020

SUPER VACANT LAND REAL ESTATE OPPORTUNITIES

ESTATE SALE - Several Sites Available

Highway 2321 - Deer Point Area - Panama City - Bay County - Northwest Florida



SITE 6 - ~~\$275,000.00~~ **NOW! \$247,500** - 8± Acres

SITE 7 - ~~\$225,000.00~~ **NOW! \$202,500** - 3.4± Acres

SITE 6 and 7 - ~~\$450,000.00~~ **NOW! \$405,000** - 11.4± Acres; Parcels Separated by a County Right of Way

UTILITIES: Available - City Of Lynn Haven, Florida (Must be annexed)

ZONING: Site 6 - Agriculture/ Timberland (AG-2) - Bay County; Site 7 - Residential (R-2) - Bay County.
Would require annexation into City of Lynn Haven for Mixed Use

CHARLIE HAAS



850-896-2240

charlie.haas@countsrealestate.com



Phone: 850-248-3640

Fax: 850-248-3624

3009 Hwy 77, Suite H

Panama City, Florida 32405

JIM EVERITT



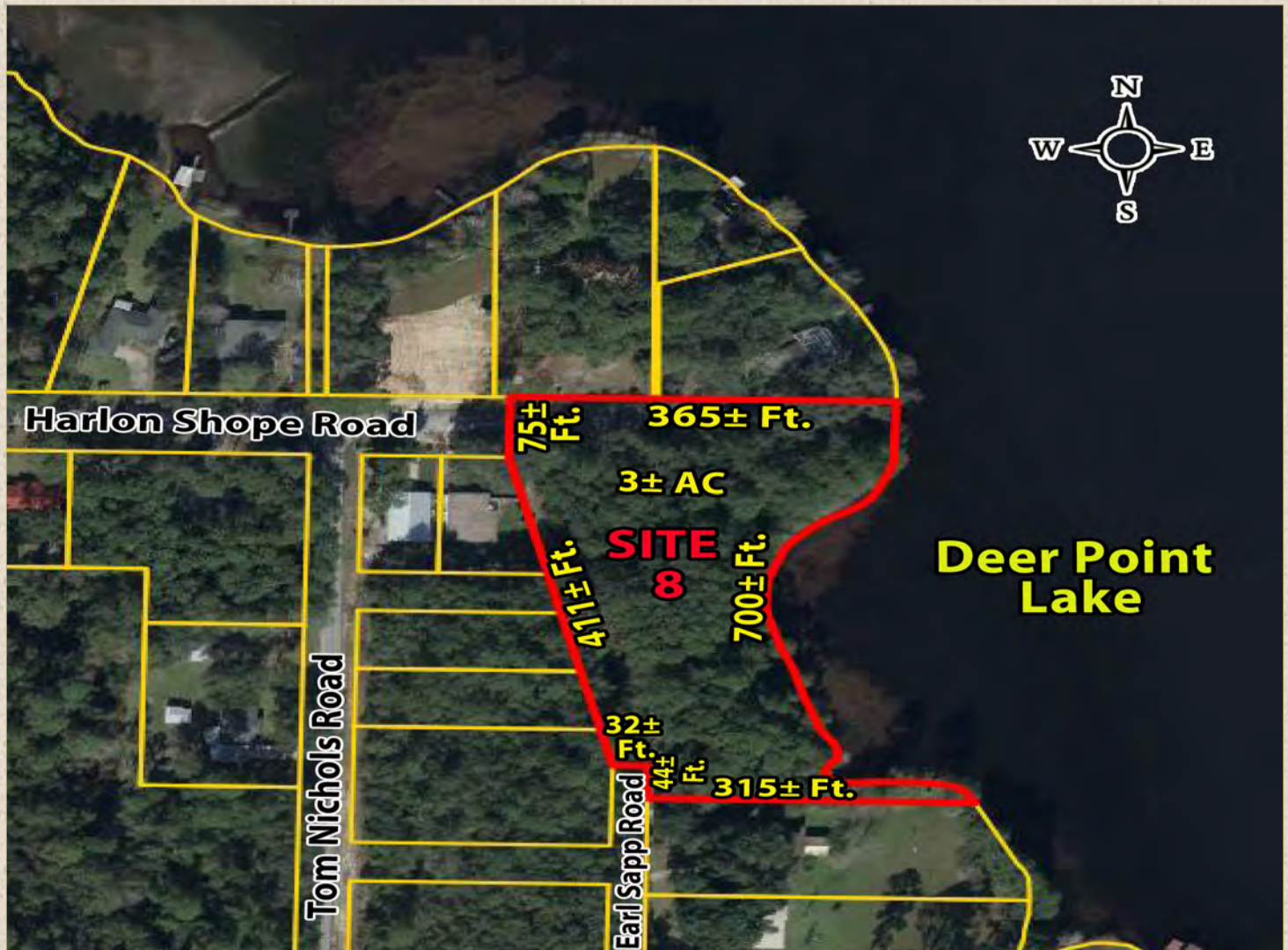
850-814-9924

jimeveritt46@gmail.com

SUPER VACANT LAND REAL ESTATE OPPORTUNITIES

ESTATE SALE - Several Sites Available

Highway 2321 - Deer Point Area - Panama City - Bay County - Northwest Florida



SITE 8 - ~~\$250,000.00~~ **NOW! \$225,000**

DESCRIPTION: 3± Acres - Beautifully wooded parcel. Located at the East side of Harlon Shope Road and at the North end of Earl Sapp Road, Off Highway 2321

UTILITIES: Private Well and Septic Required

ZONING: Agriculture/ Timberland (AG-2) - Bay County. Would require annexation into City of Lynn Haven for Mixed Use.

CHARLIE HAAS



850-896-2240

charlie.haas@countsrealestate.com



Phone: 850-248-3640

Fax: 850-248-3624

3009 Hwy 77, Suite H

Panama City, Florida 32405

JIM EVERITT



850-814-9924

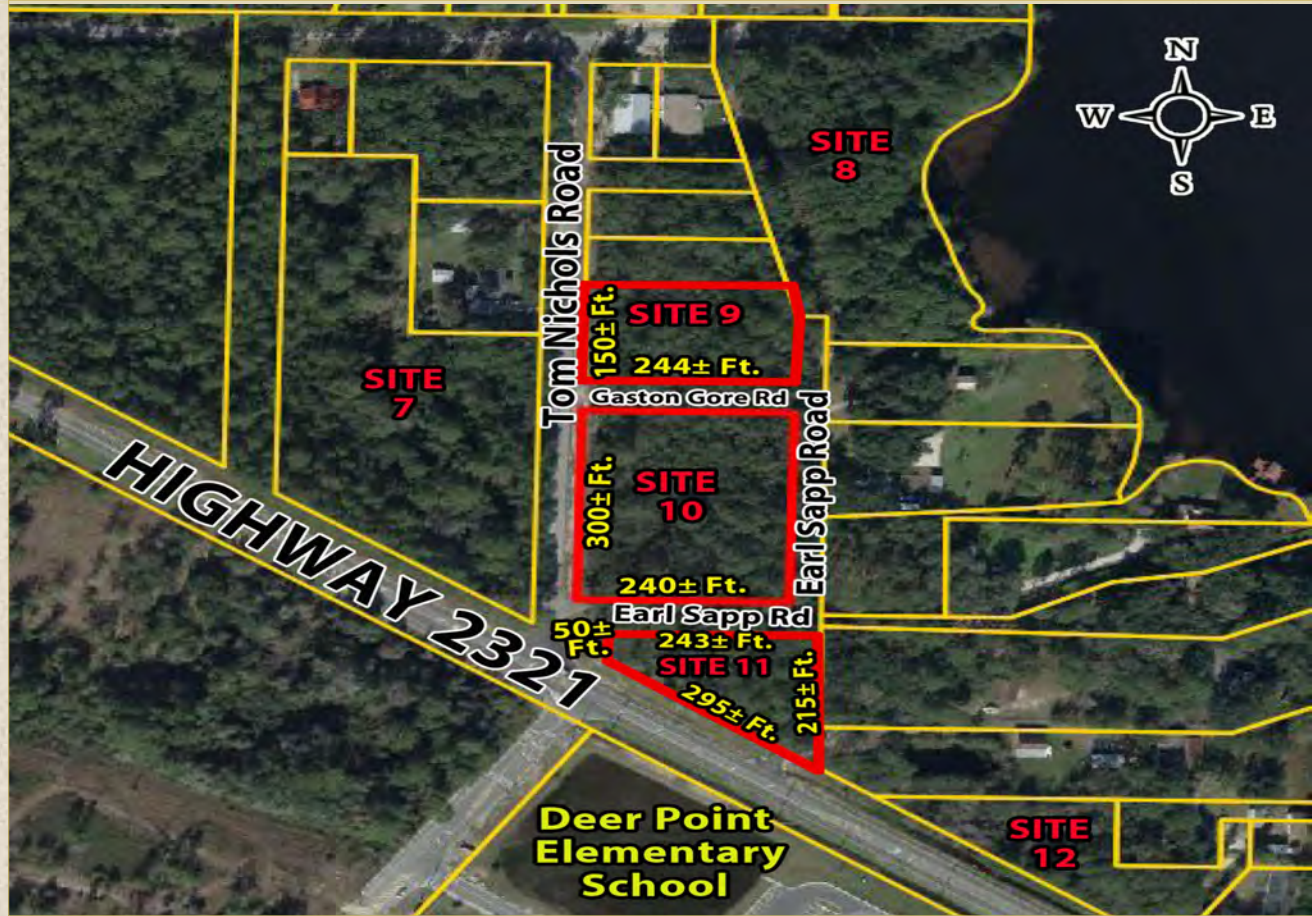
jimeveritt46@gmail.com

Information contained herein was obtained from sources believed reliable; however, Counts Real Estate Group, Inc. makes no guarantees, warranties or representations as to the completeness or accuracy thereof. This presentation of the property is submitted subject to errors, omissions, change of price or conditions, prior sale or lease, or withdrawal without notice. 1-29-2020

SUPER VACANT LAND REAL ESTATE OPPORTUNITIES

ESTATE SALE - Several Sites Available

Highway 2321 - Deer Point Area - Panama City - Bay County - Northwest Florida



SITE 9 - ~~\$85,000.00~~ **NOW! \$76,500** - .84± Acres (150± Ft. Tom Nichols Road by 244± Ft. on Gaston Gore Road—Unimproved) (Lots 4,5,6 and 7, Block D; Deer Point Lake Subdivision Recorded February 23, 1965)

SITE 10 - ~~\$150,000.00~~ **NOW! \$135,000** - 1.6± Acres (300± Ft. wide on Tom Nichols Road by 240± Ft. Deep on Earl Sapp Road) (Lots 1-8, Block D; Deer Point Lake Subdivision Recorded February 23, 1965)

SITE 11 - **SOLD** - \$30,000.00 - .72± Acres (295± Ft. on Hwy 2321, 50± Ft. on Tom Nichols Road, 243± Ft. on Earl Sapp Road (North) and 215± Ft. on Earl Sapp Road (East))

UTILITIES: Private Well and Septic Required

ZONING: Site 9 & 10 - Residential (R-2) - Bay County; Site 11 - Agriculture/Timberland (AG-2) - Bay County. Would require annexation into City of Lynn Haven for Mixed Use.

CHARLIE HAAS



850-896-2240

charlie.haas@countsrealestate.com



Phone: 850-248-3640

Fax: 850-248-3624

3009 Hwy 77, Suite H
Panama City, Florida 32405

JIM EVERITT



850-814-9924

jimeveritt46@gmail.com

SUPER VACANT LAND REAL ESTATE OPPORTUNITIES

ESTATE SALE - Several Sites Available

Highway 2321 - Deer Point Area - Panama City - Bay County - Northwest Florida



SITE 12 - ~~\$40,000.00~~ **NOW! \$36,000** – 1.35± Acres; 685± Ft. on Hwy 2321 across from Deer Point Elementary School. Irregular Shape; somewhat two triangles separated by an ingress - egress access easement. The East triangle is approximately .52± Acres, the West triangle is approximately .83± Acres.

UTILITIES: Private Well and Septic Required

ZONING: Agriculture/ Timberland (AG-2) - Bay County. Would require annexation into City of Lynn Haven for Mixed Use.

CHARLIE HAAS



850-896-2240

charlie.haas@countsrealestate.com



Phone: 850-248-3640

Fax: 850-248-3624

3009 Hwy 77, Suite H
Panama City, Florida 32405

JIM EVERITT



850-814-9924

jimeveritt46@gmail.com

Information contained herein was obtained from sources believed reliable; however, Counts Real Estate Group, Inc. makes no guarantees, warranties or representations as to the completeness or accuracy thereof. This presentation of the property is submitted subject to errors, omissions, change of price or conditions, prior sale or lease, or withdrawal without notice. 1-29-2020