

46987-46989 LIBERTY DRIVE
WIXOM, MICHIGAN

INDUSTRIAL FOR LEASE
6,718 Square Feet Available



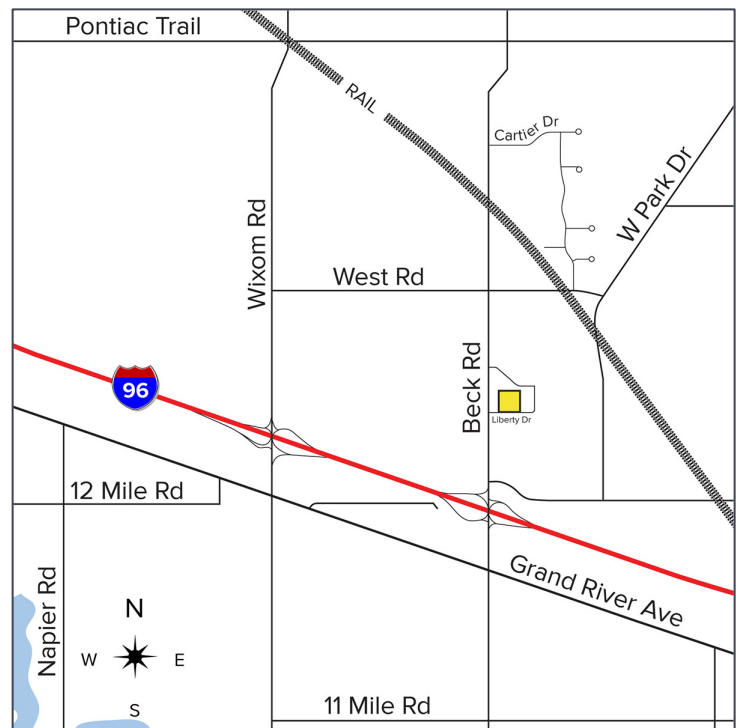
**SIGNATURE
ASSOCIATES**
KNOW SIGNATURE | KNOW RESULTS

WIXOM BUSINESS CENTER



PROPERTY FEATURES

- 6,718 square feet available
- 718 square feet office
- 18' clear height
- (1) 12' x 16' grade level door
- (2) truckwells
- 200 amps, 3-phase power
- Fully air-conditioned space
- Lease Rate: \$9.25/sq. ft. NNN



For more information, please contact:

JIM MONTGOMERY
(248) 359 0614

jmontgomery@signatureassociates.com

CHRISTOPHER M. D'ANGELO
(248) 948 0109

cdangelo@signatureassociates.com

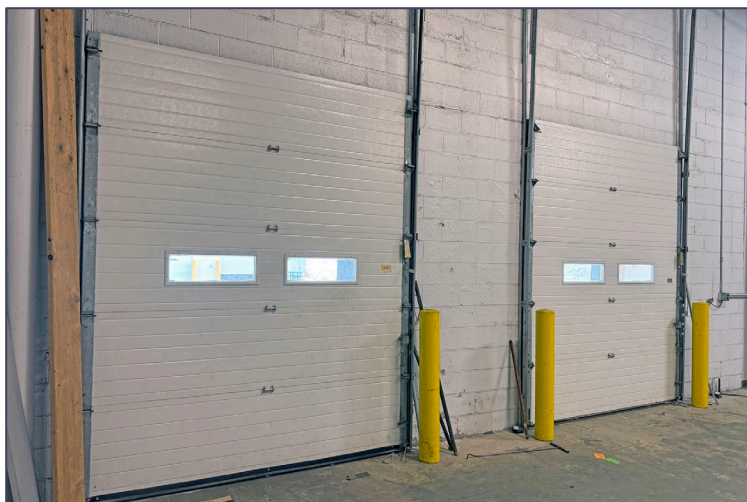
SIGNATURE ASSOCIATES
One Towne Square, Suite 1200
Southfield, MI 48076
www.signatureassociates.com

46987-46989 Liberty Drive – Wixom, Michigan

Industrial For Lease

6,718
Square Feet
AVAILABLE

Interior Photos



For more information, please contact:

JIM MONTGOMERY

(248) 359 0614

jmontgomery@signatureassociates.com

CHRISTOPHER M. D'ANGELO

(248) 948 0109

cdangelo@signatureassociates.com

SIGNATURE ASSOCIATES

One Towne Square, Suite 1200

Southfield, MI 48076

www.signatureassociates.com

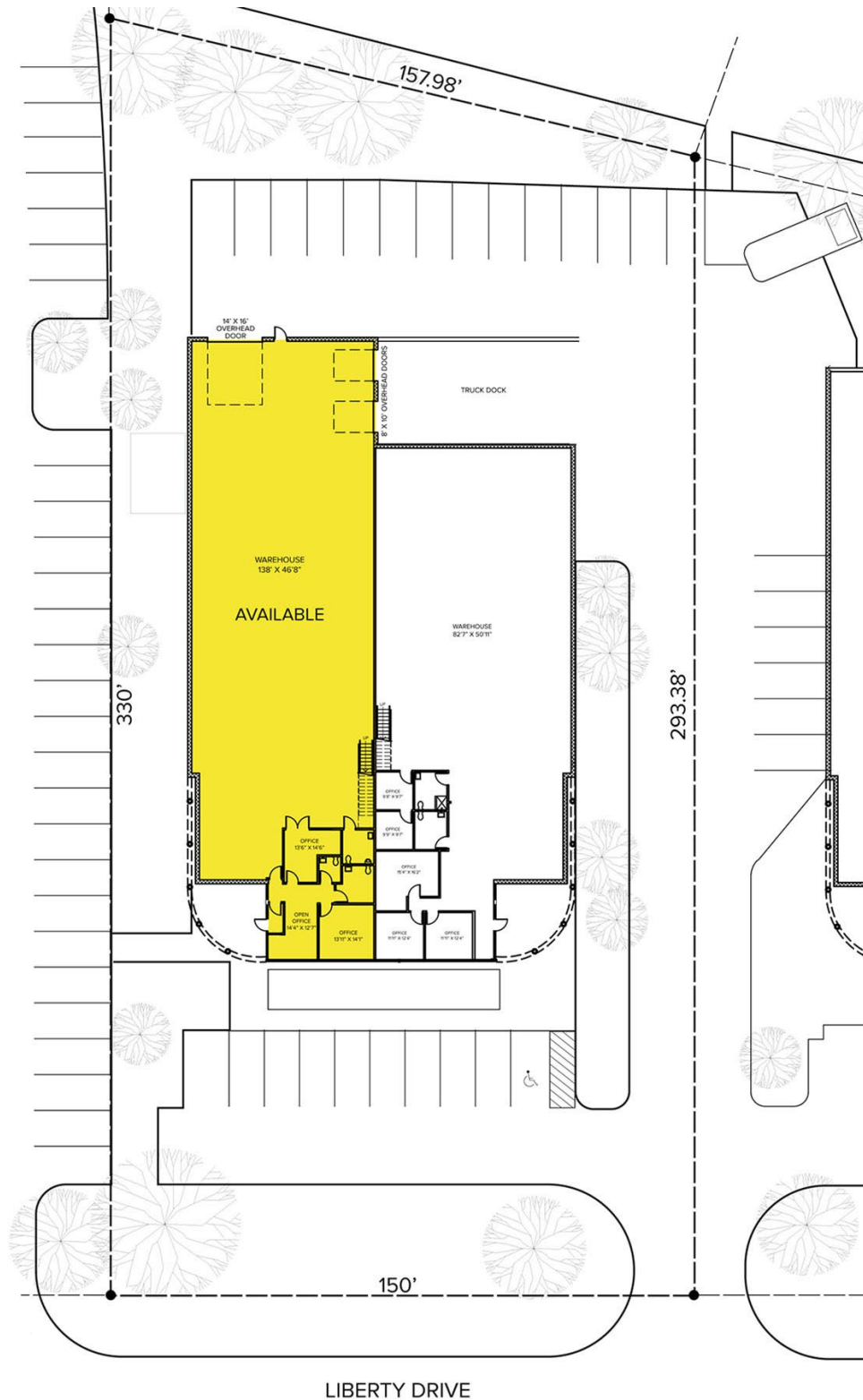
Information is subject to verification and no liability for errors or omissions is assumed. Price is subject to change and listing withdrawal.

46987-46989 Liberty Drive – Wixom, Michigan

Industrial For Lease

6,718
Square Feet
AVAILABLE

Site Plan



For more information, please contact:

JIM MONTGOMERY

(248) 359 0614

jmontgomery@signatureassociates.com

CHRISTOPHER M. D'ANGELO

(248) 948 0109

cdangelo@signatureassociates.com

SIGNATURE ASSOCIATES

One Towne Square, Suite 1200

Southfield, MI 48076

www.signatureassociates.com

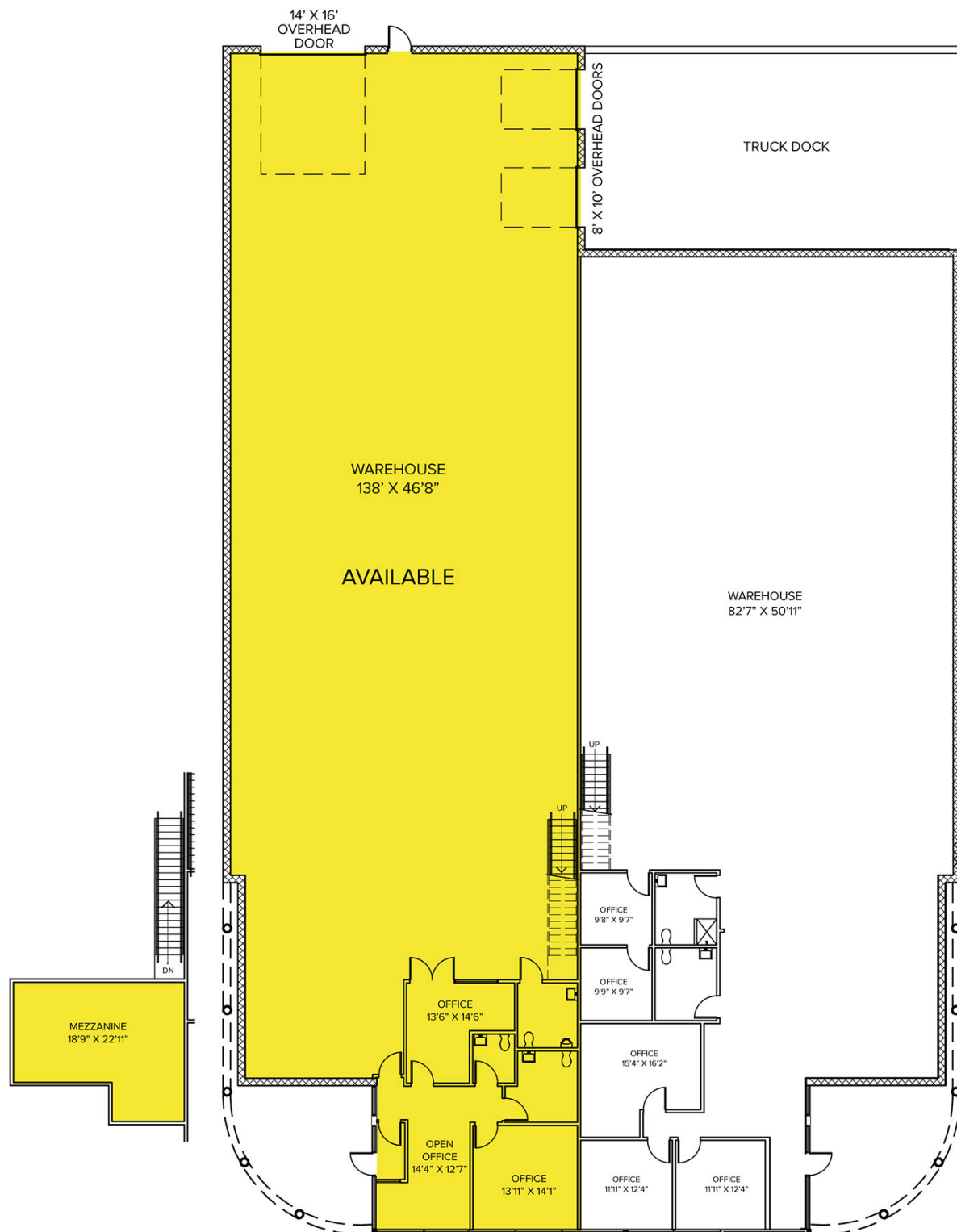
Information is subject to verification and no liability for errors or omissions is assumed. Price is subject to change and listing withdrawal.

46987-46989 Liberty Drive – Wixom, Michigan

Industrial For Lease

6,718
Square Feet
AVAILABLE

Floor Plan



For more information, please contact:

JIM MONTGOMERY

(248) 359 0614

jmontgomery@signatureassociates.com

CHRISTOPHER M. D'ANGELO

(248) 948 0109

cdangelo@signatureassociates.com

SIGNATURE ASSOCIATES

One Towne Square, Suite 1200

Southfield, MI 48076

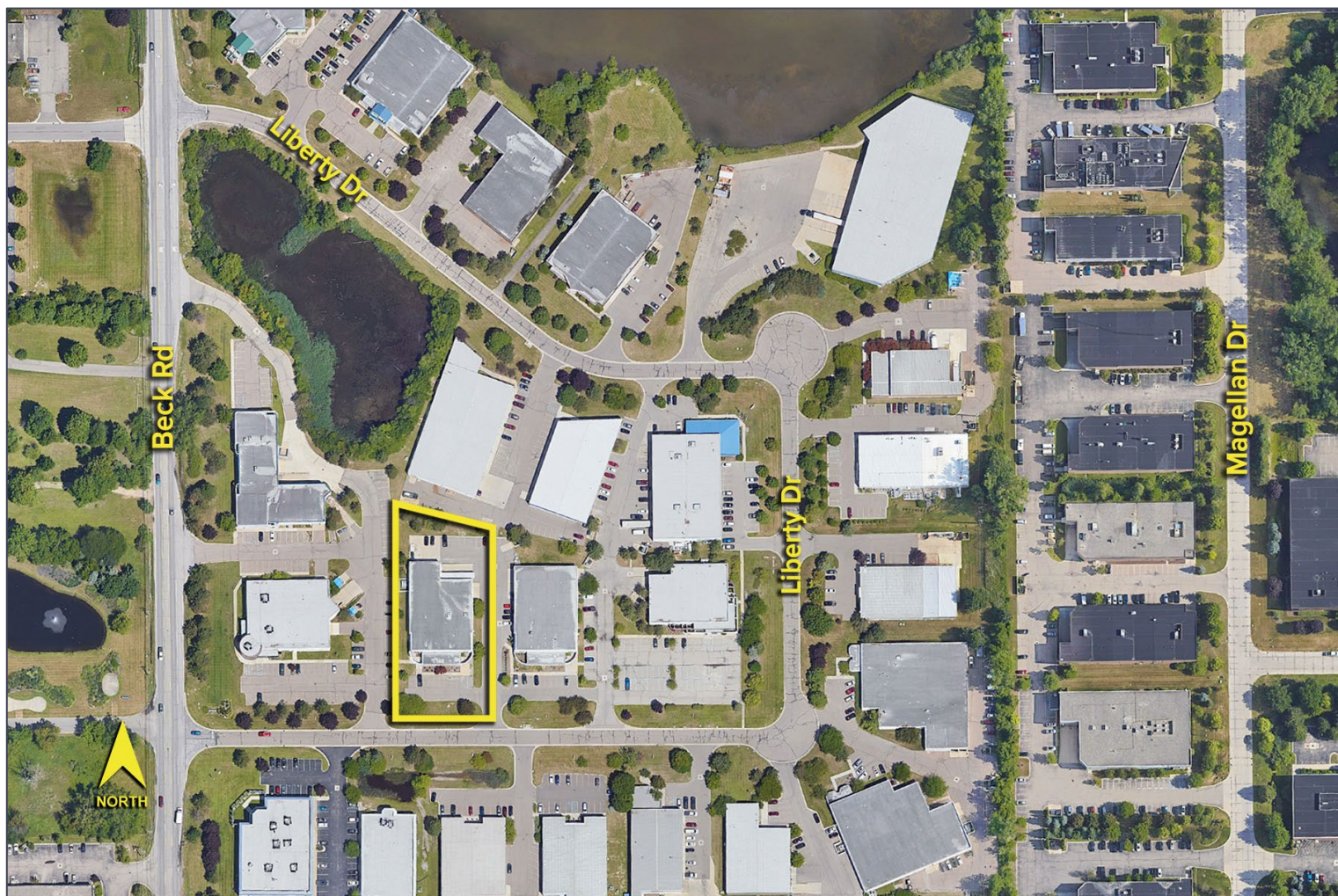
www.signatureassociates.com

46987-46989 Liberty Drive – Wixom, Michigan

Industrial For Lease

6,718
Square Feet
AVAILABLE

Aerial



For more information, please contact:

JIM MONTGOMERY

(248) 359 0614

jmontgomery@signatureassociates.com

CHRISTOPHER M. D'ANGELO

(248) 948 0109

cdangelo@signatureassociates.com

SIGNATURE ASSOCIATES

One Towne Square, Suite 1200

Southfield, MI 48076

www.signatureassociates.com

Information is subject to verification and no liability for errors or omissions is assumed. Price is subject to change and listing withdrawal.