

OFFICE/RETAIL
LEASE



CEDAR PLAZA

3630 - 3680 S Cedar Street, Tacoma, WA 98409

Jack Rosen

425.289.2221

jack@rosenharbottle.com

425.454.3030
rosenharbottle.com

PO Box 5003
Bellevue, WA 98009 - 5003



TACOMA OFFICE/RETAIL AND WAREHOUSE SPACE

1,500 SF - 7,680 SF Available

\$21.00/SF, Modified Gross

PROPERTY DETAILS:

- Near Tacoma Mall and Retail/Restaurant Amenities
- Neighboring Anchor Retailers Include: Ross, Guitar Center, Michael's, McDonald's, Costco, & More
- Ample Parking
- Quick Access to I-5 and Highway-16
- Pylon Signage Available



Building A (3630)



Building B (3680)

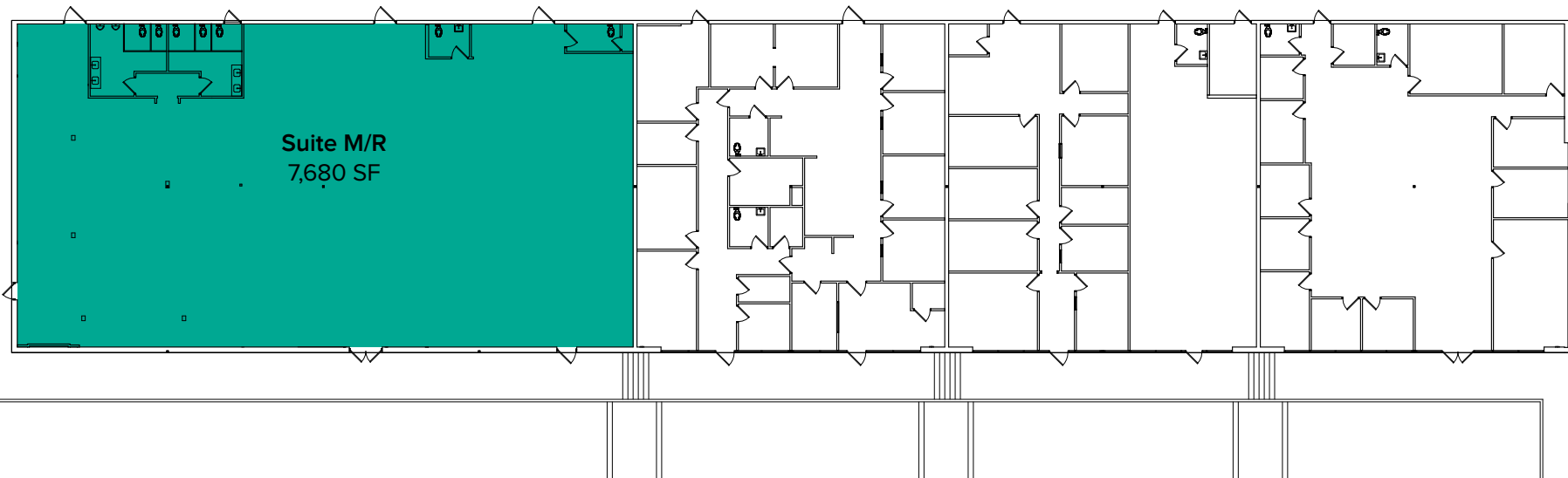


Building D - Top Level (3640)

The information provided herein has been obtained from sources believed to be reliable, but no representation or warranty, express or implied, is made with respect to the accuracy or completeness of any such information. Each prospective buyer or tenant should independently investigate, evaluate and verify all information provided herein and any other matters deemed material. Please consult your attorney, tax advisor or other professional advisor. The terms of sale or lease set forth herein are subject to change or withdrawal at any time and without notice.

BUILDING A (3630)

Suite	Square Feet	Rate	Notes
M/R	1,907 SF - 7,680 SF	\$21.00/SF, Mod Gross	Former restaurant space with open work area and restrooms. Space is divisible. Available with 30 days' notice.



The information provided herein has been obtained from sources believed to be reliable, but no representation or warranty, express or implied, is made with respect to the accuracy or completeness of any such information. Each prospective buyer or tenant should independently investigate, evaluate and verify all information provided herein and any other matters deemed material. Please consult your attorney, tax advisor or other professional advisor. The terms of sale or lease set forth herein are subject to change or withdrawal at any time and without notice.

SUITE 3630-M/R SAMPLE FLOOR PLAN

SUITE R FEATURES

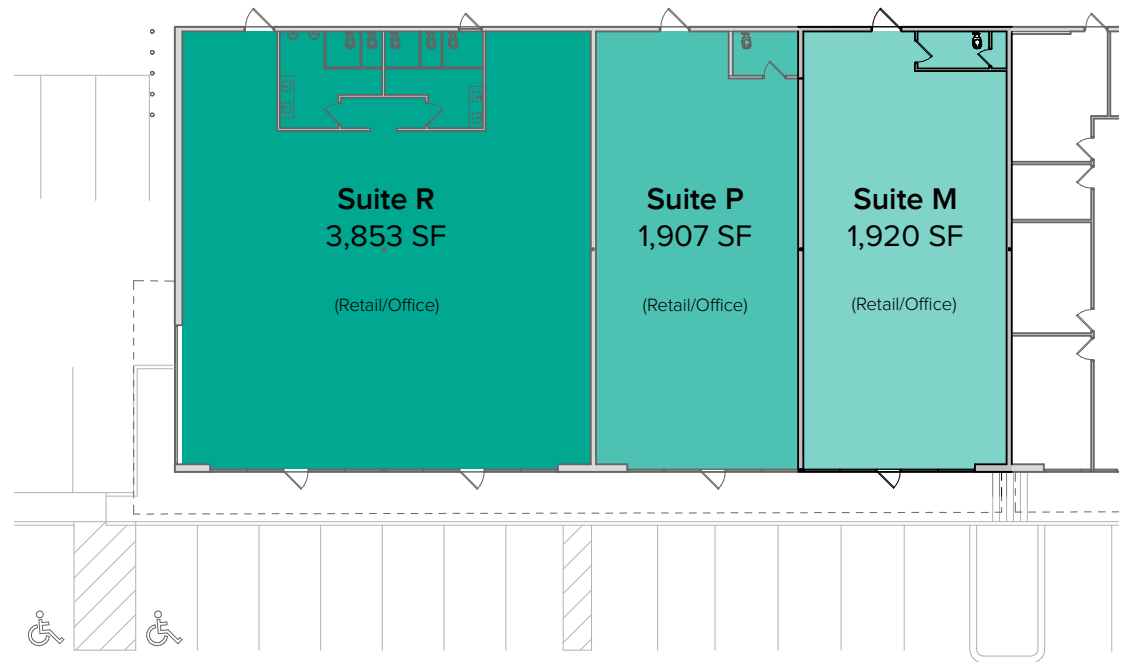
- **Endcap Retail/Office Space**
- **3,853 SF**
- Open floor layout
- 2 restrooms
- Direct front & back entrances

SUITE P FEATURES

- **Retail/Office Space**
- **1,907 SF**
- Open floor layout
- 1 private restroom
- Direct front & back entrances

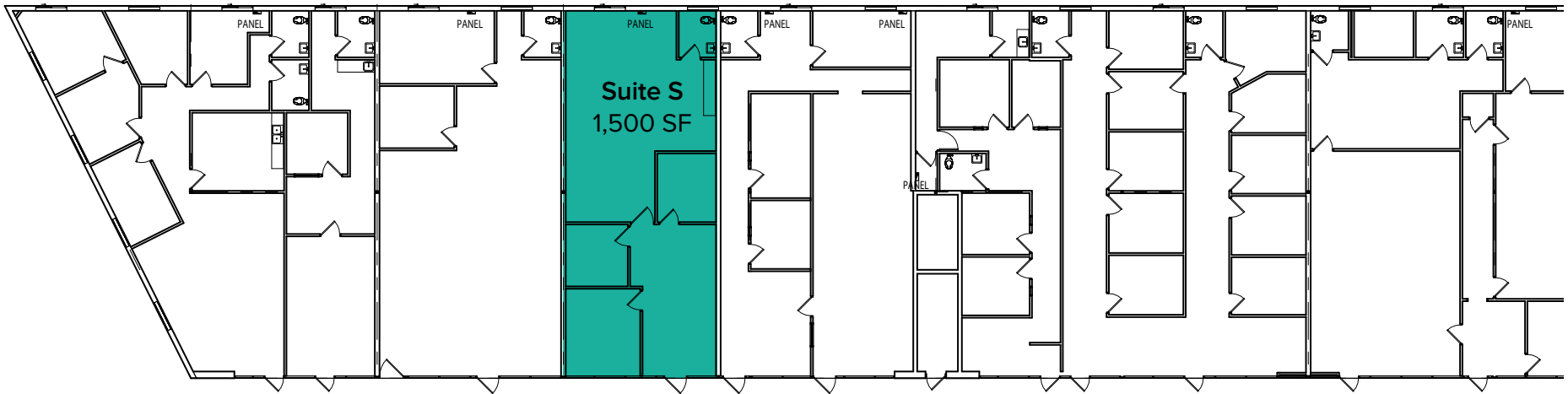
SUITE M FEATURES

- **Retail/Office Space**
- **1,920 SF**
- Open floor layout
- 1 private restroom
- Direct front & back entrances



BUILDING D (3640) TOP LEVEL FLOOR PLAN

Suite	Square Feet	Rate	Notes
S	1,500 SF	\$21.00/SF, Mod Gross	Office space with 3 private offices, open work area, and one restroom. Available 11/1/25.



The information provided herein has been obtained from sources believed to be reliable, but no representation or warranty, express or implied, is made with respect to the accuracy or completeness of any such information. Each prospective buyer or tenant should independently investigate, evaluate and verify all information provided herein and any other matters deemed material. Please consult your attorney, tax advisor or other professional advisor. The terms of sale or lease set forth herein are subject to change or withdrawal at any time and without notice.

SITE PLAN



The information provided herein has been obtained from sources believed to be reliable, but no representation or warranty, express or implied, is made with respect to the accuracy or completeness of any such information. Each prospective buyer or tenant should independently investigate, evaluate and verify all information provided herein and any other matters deemed material. Please consult your attorney, tax advisor or other professional advisor. The terms of sale or lease set forth herein are subject to change or withdrawal at any time and without notice.

LOCATION MAP

