

FOR LEASE: OUTPATIENT MEDICAL SPACE

VIRTUAL
TOUR
LINKS
INSIDE

GRENADA MEDICAL COMPLEX

2,160–3,142 RSF Available

1300 Sunset Drive, Grenada, MS 38901

Proudly owned by

Healthpeak® | DOC
LISTED
NYSE

AMY HALL, CCIM
SVP- LEASING AND PORTFOLIO STRATEGY
414-367-5531 | AHall@healthpeak.com



PROPERTY OVERVIEW

This complex is the top outpatient medical building in Grenada with local, on-site professional management. Specialties offered at this building include a pharmacy, lab, internal medicine, family medicine, orthopedics and sports medicine, neurology, ENT, hearing care, a foot clinic, and counseling. The building is 1.3 miles from the only hospital in Grenada, The University of Mississippi Medical Center, and is 5.4 miles from the Grenada Municipal Airport.

CAMPUS SETTING

Off campus

BUILDING DETAILS

53,025 RSF
Built in 1972
Renovated in 2000
One story

AVAILABLE

Suite K: 2,921 RSF
Suite N: 3,142 RSF
Suite A-1: 2,681 RSF
Suite T: 2,160 RSF (timeshare suite)
Suite B: 3,000 RSF

ACCESS

Access from I-55 and
Hwy 8/ Sunset Drive

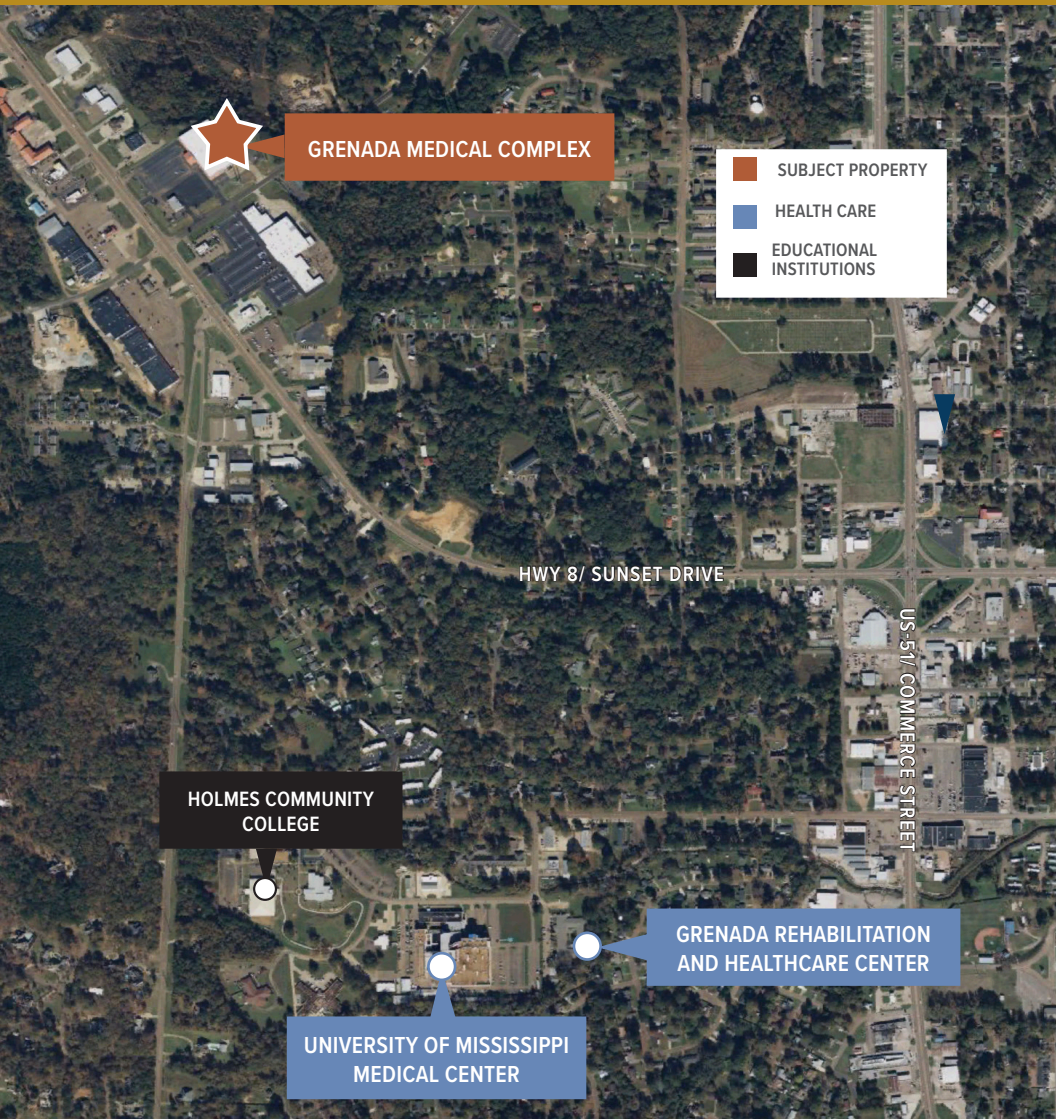
PARKING

Ample free parking

Proudly owned by

Healthpeak® | **DOC**
LISTED
NYSE

RAOUL RICHARDSON
RRichardson@healthpeak.com



NEARBY HEALTH CARE

The University of Mississippi Medical Center (UMMC) is located 1.3 miles from the Grenada Medical Complex. UMMC is a 156-bed community hospital providing a broad range of health services to adults and children available through the state's only academic medical center. These services include over 20 types of specialty care, such as cancer care, urology care, orthopaedics, wound care, and hyperbaric medicine.

AREA OVERVIEW

Strategically located on Interstate-55, Grenada, Mississippi, is halfway between Jackson, Mississippi, and Memphis, Tennessee. Grenada's Historic District and Downtown Square provide an abundance of small-town charm, while the beautiful Grenada Lake, many parks, and an expansive golf course designed by an award-winning golf architect offer numerous recreational opportunities. Area educational institutions include the Holmes Community College Grenada Campus and the University of Mississippi Grenada. Top area employers include Modine, Lennox, the Grenada School District, and UMMC.

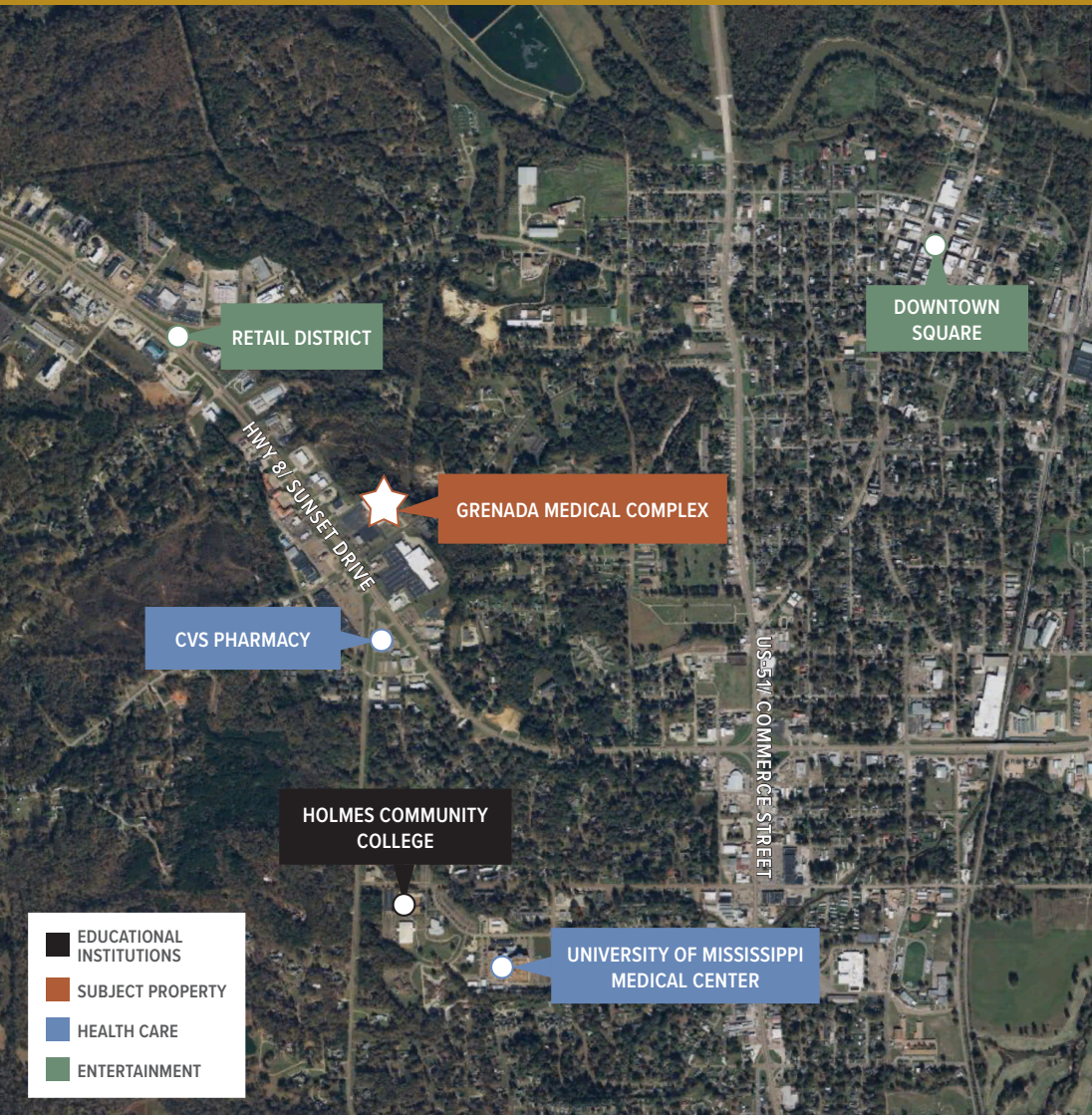
Proudly owned by

Healthpeak® | **DOC**
LISTED
NYSE

AMY HALL, CCIM
SVP- LEASING AND PORTFOLIO STRATEGY
414-367-5531 | AHall@healthpeak.com

GRENADA MEDICAL COMPLEX

1300 Sunset Drive, Grenada, MS 38901



DEMOGRAPHICS

| Distance | Total Population | Median Household Income |
|----------|------------------|-------------------------|
| 1-Mile | 4,137 | \$25,194 |
| 3-Miles | 10,319 | \$29,500 |
| 5-Miles | 12,942 | \$38,720 |



Area Health Care

Brandon, MS

- Crossgates River Oaks Hospital
- Merit Health Rankin
- Baptist Health Systems

Ridgeland, MS

- First Choice Health Plan of Mississippi
- Baptist Medical Group
- Select Specialty Hospital

Vicksburg, MS

- Merit Health River Region

Meridian, MS

- Rush Health Systems
- Anderson Regional Medical Center

Hattiesburg, MS

- Merit Health Wesley
- Forrest General hospital

Proudly owned by

Healthpeak® | **DOC**
LISTED
NYSE

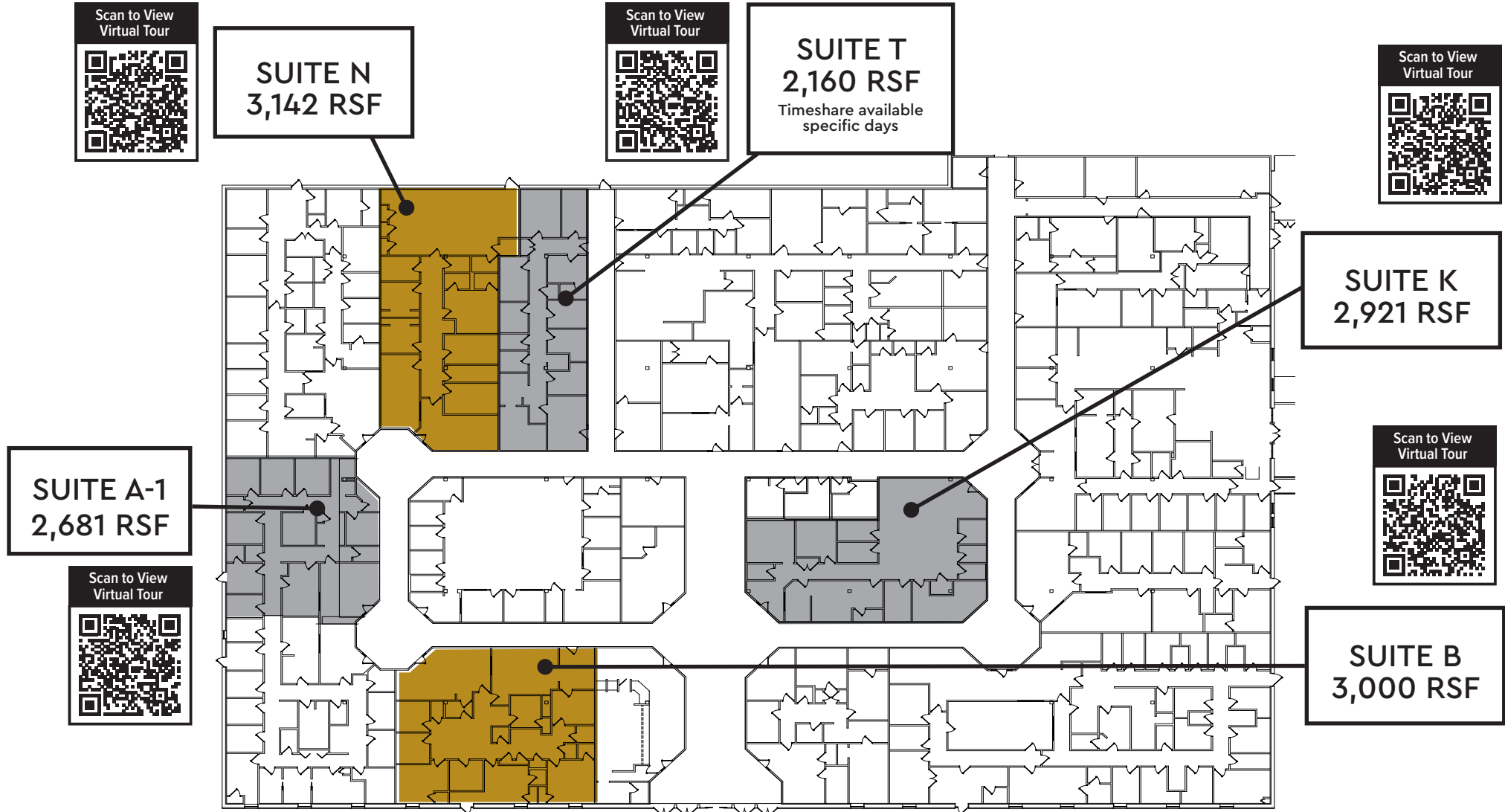
AMY HALL, CCIM

SVP- LEASING AND PORTFOLIO STRATEGY

414-367-5531 | AHall@healthpeak.com

GRENADA MEDICAL COMPLEX

1300 Sunset Drive, Grenada, MS 38901



Proudly owned by

Healthpeak® | **DOC**
LISTED
NYSE

AMY HALL, CCIM
SVP- LEASING AND PORTFOLIO STRATEGY
414-367-5531 | AHall@healthpeak.com

