

Heritage Park Apartments

40 Unit Apartment in Lee's Summit, MO (Age restricted 55+)

FOR SALE



Offering Unpriced

Highlights

- Significant upside via unit remodel
- Extremely stable occupancy
- Low maintenance construction
- Adjacent to regional retirement community

Property Information

Bldg. Name	Heritage Park Apartments
Bldg. Type	Villa Style Apartments (10 single story fourplex buildings)
Address	239 NW Murray Road Lee's Summit, Missouri 64081
Rentable Area	30,620 SF
Unit Count	40 Total
Unit Mix	20 (1Bed,1Bath) - 14 (2Bed,1Bath) - 6 (2Bed,1 ½ Bath)
Land Area	3.65 AC
Year Built	1996
Private Parking	Yes, 88 surface parking stalls
Age Restricted	Yes, tenants must be over age 55

Asset Information

NOI	\$299,726 (Proforma)
Occupancy	100% (as of 6/30/2024)

For more information, please contact:

Christopher Binkley | Director of Strategic Capital | AMG | Cell: 816.651.7150 | cbinkley@assetmgmtgrp.com

Heritage Park Apartments

40 Unit Apartment in Lee's Summit, MO (Age restricted 55+)

FOR SALE



For more information, please contact:

Christopher Binkley | Director of Strategic Capital | AMG | Cell: 816.651.7150 | cbinkley@assetmgmtgrp.com

Heritage Park Apartments

40 Unit Apartment in Lee's Summit, MO (Age restricted 55+)

FOR SALE



For more information, please contact:

Christopher Binkley | Director of Strategic Capital | AMG | Cell: 816.651.7150 | cbinkley@assetmgmtgrp.com

Heritage Park Apartments

40 Unit Apartment in Lee's Summit, MO (Age restricted 55+)

FOR SALE



For more information, please contact:

Christopher Binkley | Director of Strategic Capital | AMG | Cell: 816.651.7150 | cbinkley@assetmgmtgrp.com

Heritage Park Apartments

40 Unit Apartment in Lee's Summit, MO (Age restricted 55+)

FOR SALE



For more information, please contact:

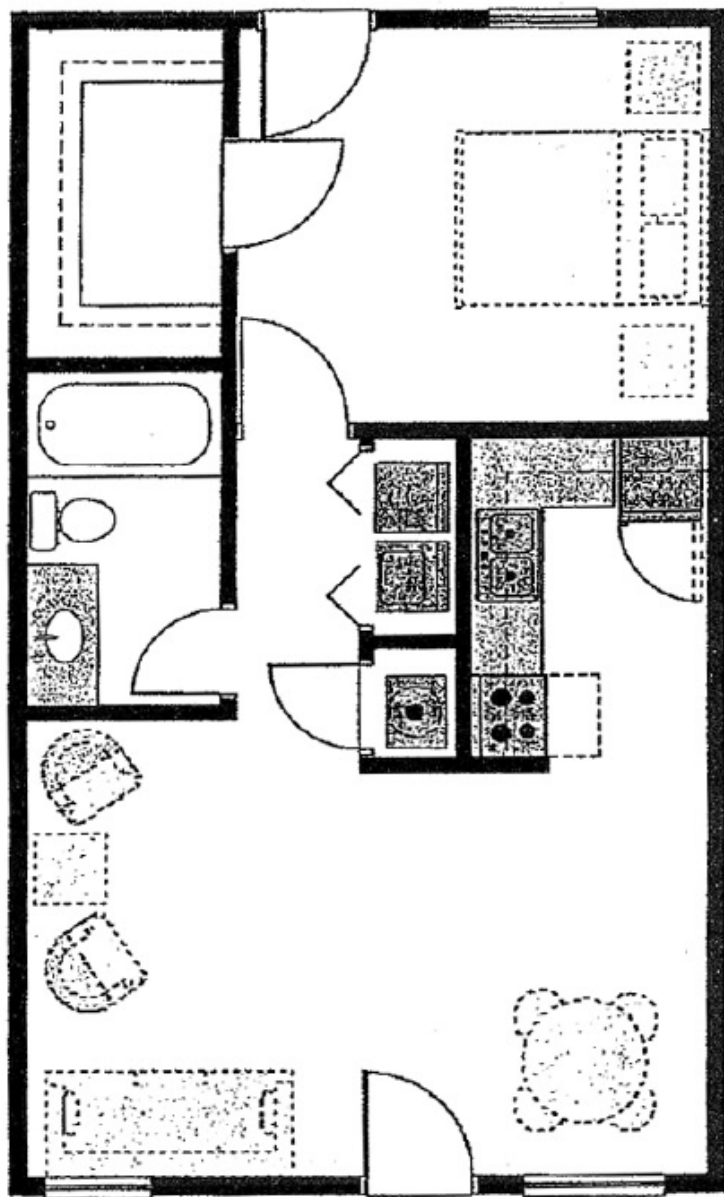
Christopher Binkley | Director of Strategic Capital | AMG | Cell: 816.651.7150 | cbinkley@assetmgmtgrp.com

Heritage Park Apartments

40 Unit Apartment in Lee's Summit, MO (Age restricted 55+)

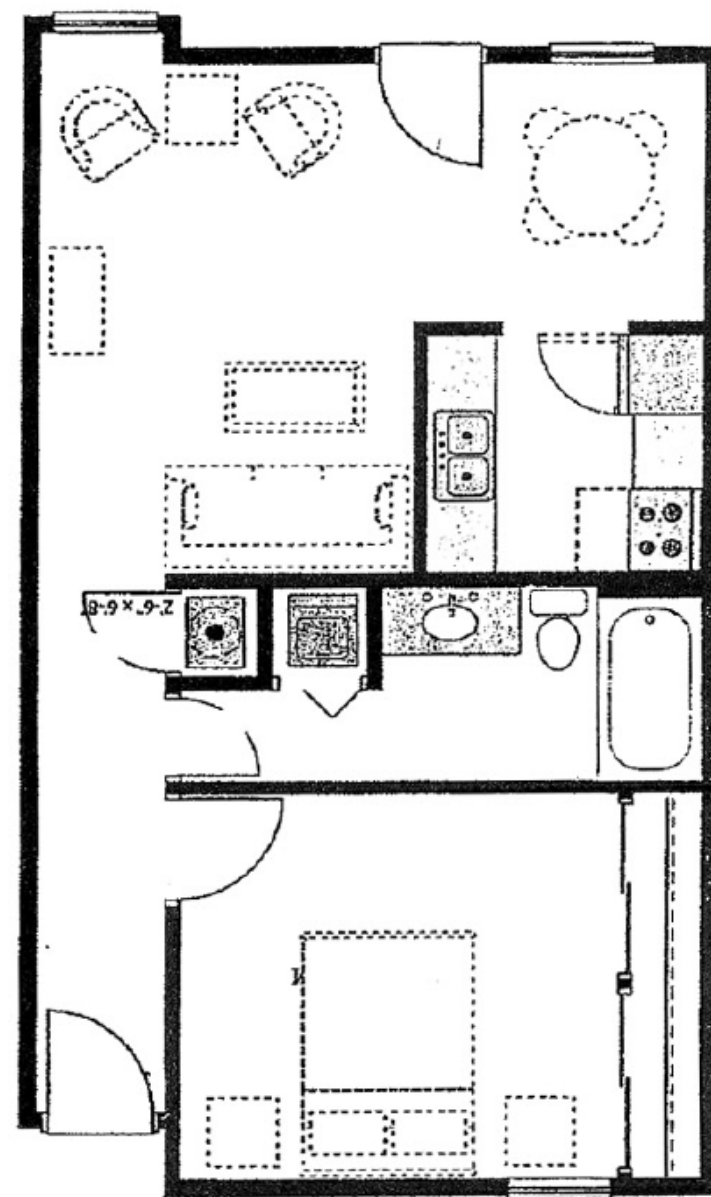
FOR SALE

"The Dover"
1 Bed, 1 Bath



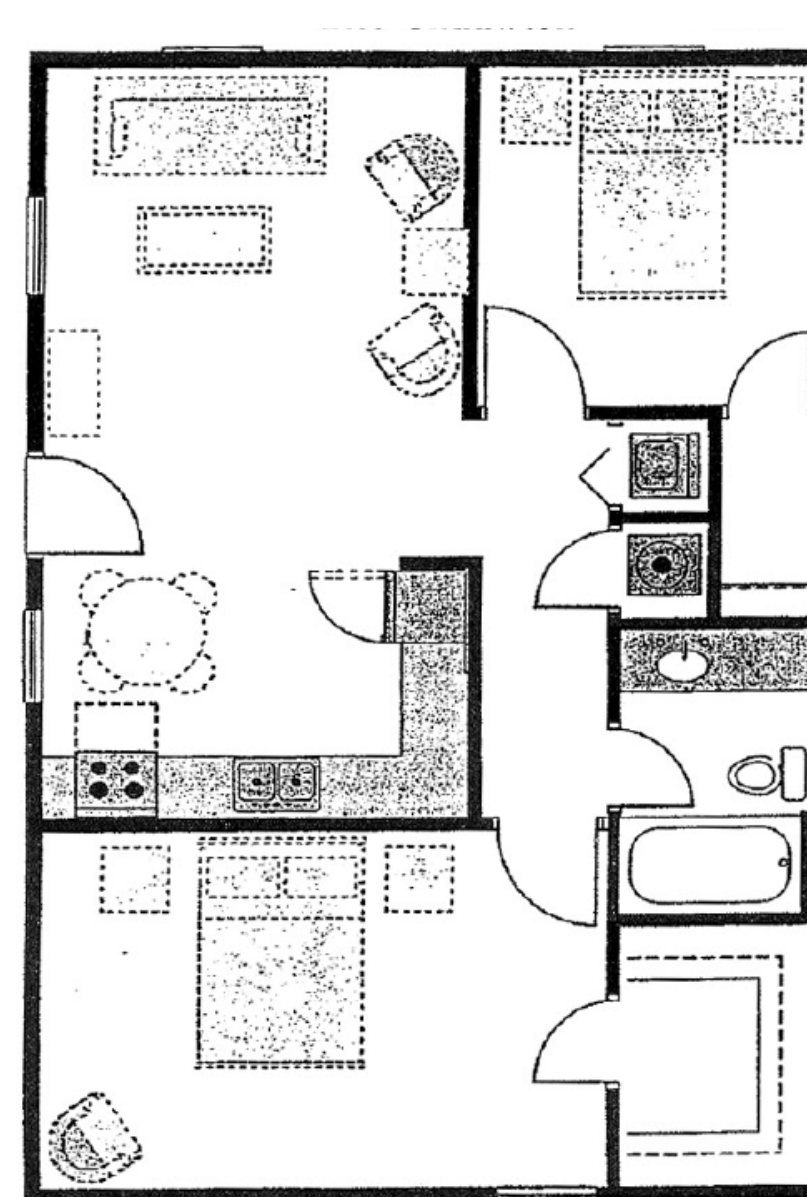
(Parking)

"The Hampton"
1 Bed, 1 Bath



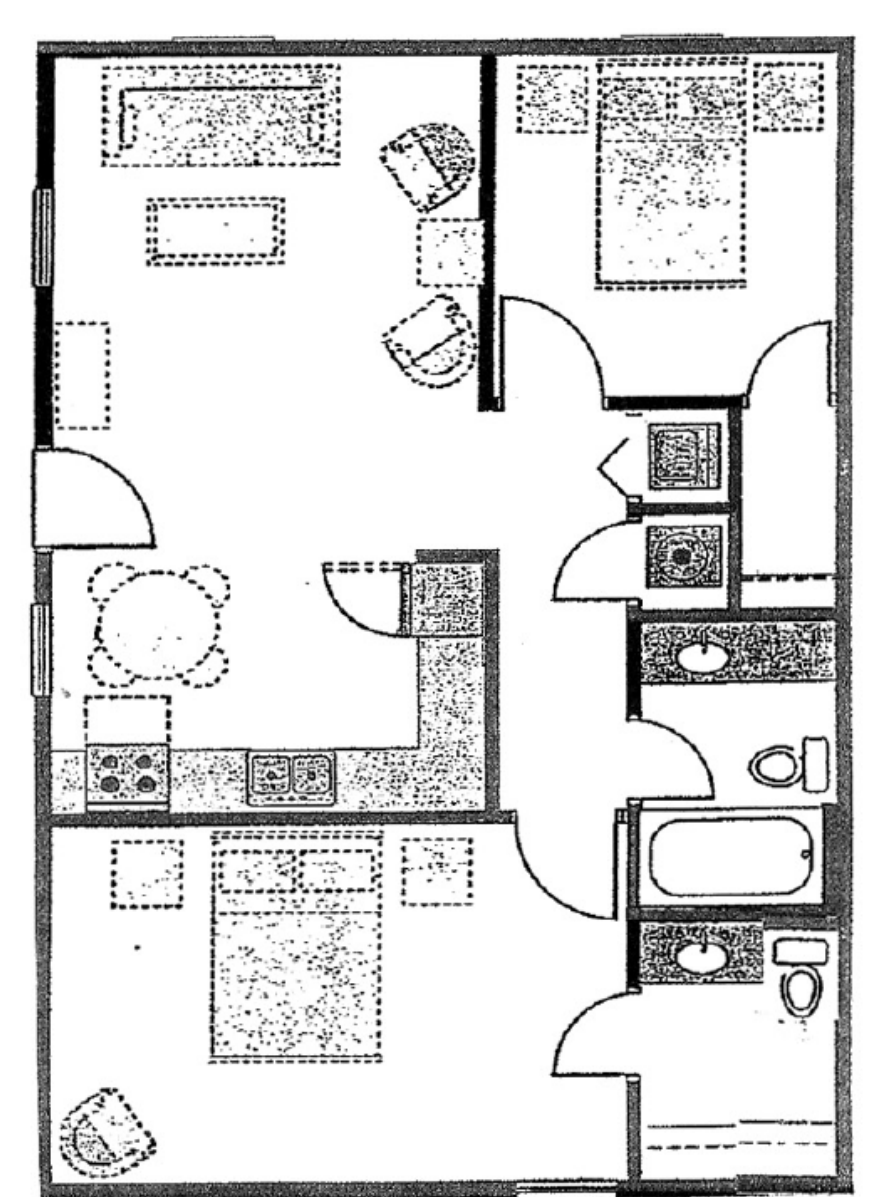
(Parking)

"The Chadwick"
2 Bed, 1 Bath



(Parking)

"The Chadwick"
2 Bed, 1 1/2 Bath



(Parking)

For more information, please contact:

Christopher Binkley | Director of Strategic Capital | AMG | Cell: 816.651.7150 | cbinkley@assetmgmtgrp.com

