



1118 Elko Dr.

1110-1118 Elko Dr, Sunnyvale, CA 94089

Ray Heidari
Portisi LLC
, San Jose, CA 95123
rheidari@yahoo.com
(408) 314-5666



1118 Elko Dr.

\$30.00 /SF/YR

Close to 101 and 237 freeways, This industrial space offers 3000 sf of light industrial space. It has 1000 SQ FT of office & 2000 SQ FT of warehouse. There is also HVAC in the office area. Two 8ft rollup doors in the warehouse area. New epoxy floor in the warehouse as well....

- Close to 237 and 101 Freeways
- HVAC in Office Space
- Two Rollup Doors in Warehouse Area
- New Epoxy Flooring in the Warehouse
- 1000 SQ FT of Office Space
- 2000 SQ FT of Warehouse



Rental Rate:	\$30.00 /SF/YR
Property Type:	Industrial
Property Subtype:	Service
Rentable Building Area:	10,710 SF
Year Built:	1972
Taxes:	\$0.12 USD/SF/MO
Operating Expenses:	\$0.03 USD/SF/MO
Rental Rate Mo:	\$2.50 /SF/MO

1st Floor Ste 1118

Space Available	3,000 SF
Rental Rate	\$30.00 /SF/YR
Date Available	Now
Service Type	Triple Net (NNN)
Office Size	1,000 SF
Space Type	Relet
Space Use	Industrial
Lease Term	Negotiable



1110-1118 Elko Dr, Sunnyvale, CA 94089

Close to 101 and 237 freeways, This industrial space offers 3000 sf of light industrial space. It has 1000 SQ FT of office & 2000 SQ FT of warehouse. There is also HVAC in the office area. Two 8ft rollup doors in the warehouse area. New epoxy floor in the warehouse as well.

Property Photos

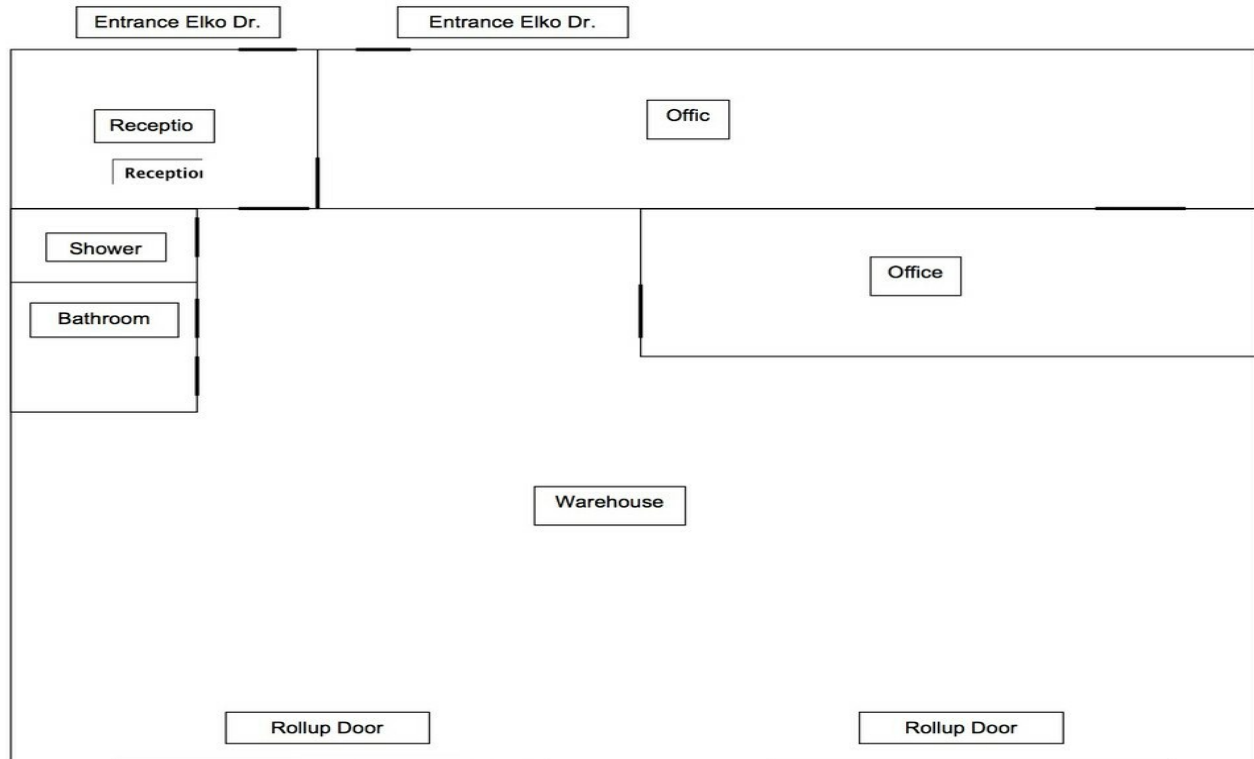


304498_1118 Elko Dr (1)_254477624



304498_1118 Elko Dr (1)_25797698

Property Photos



304498_1118 Elko Dr (1)_523659721



C80_5531

Property Photos



C80_5530



C80_5533

Property Photos



C80_5534

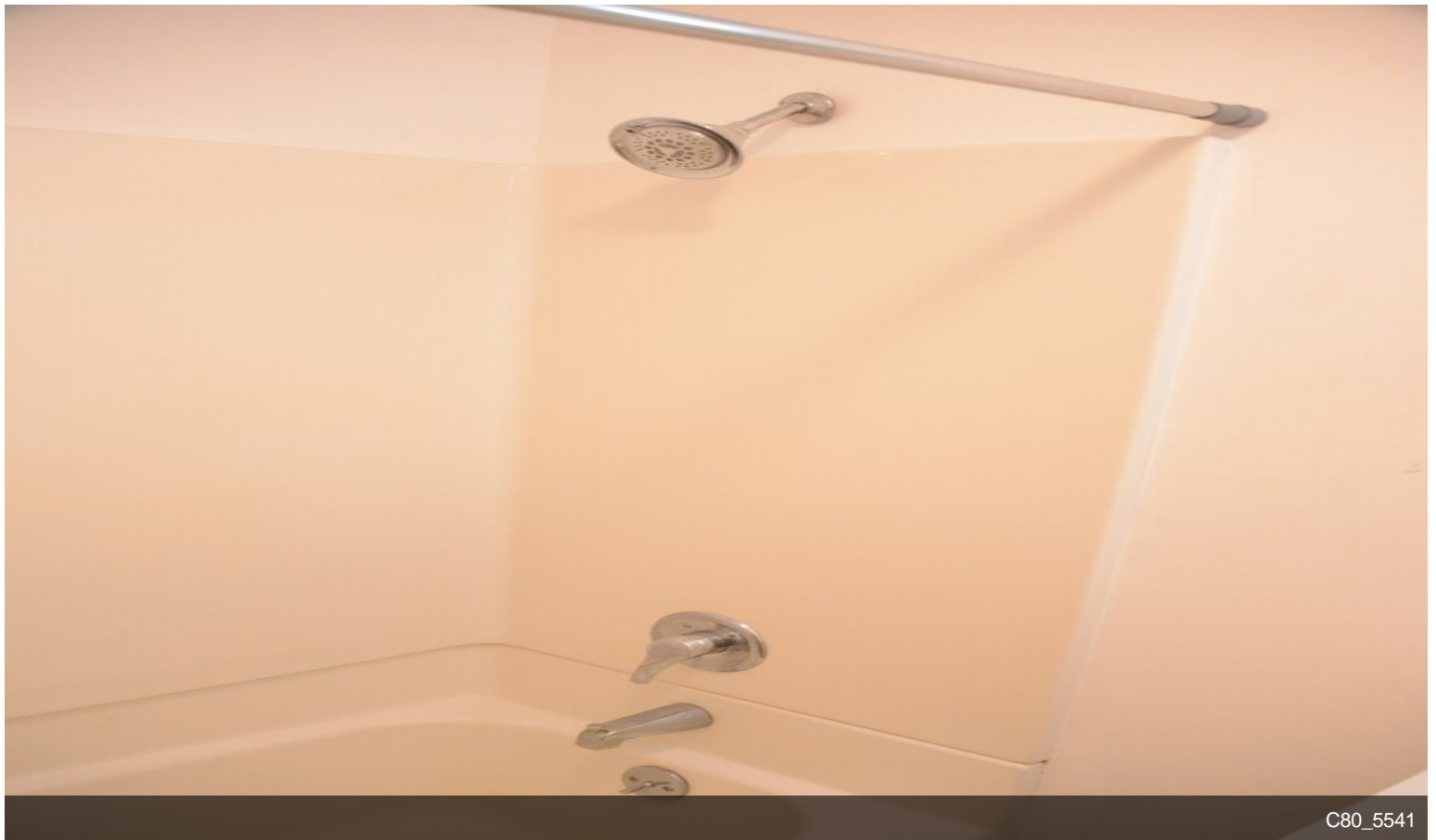


C80_5535

Property Photos

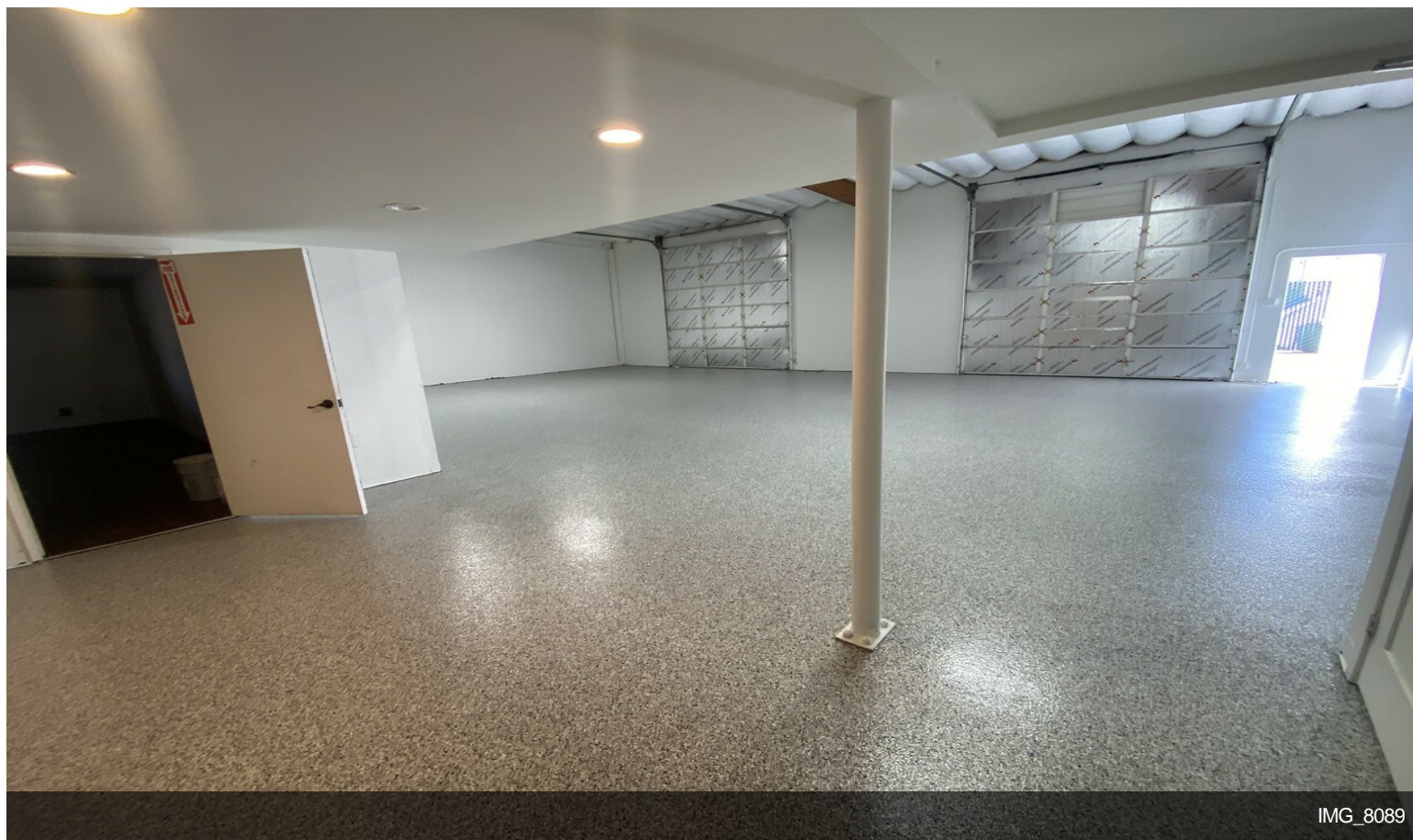


C80_5537



C80_5541

Property Photos



IMG_8089



IMG_8090

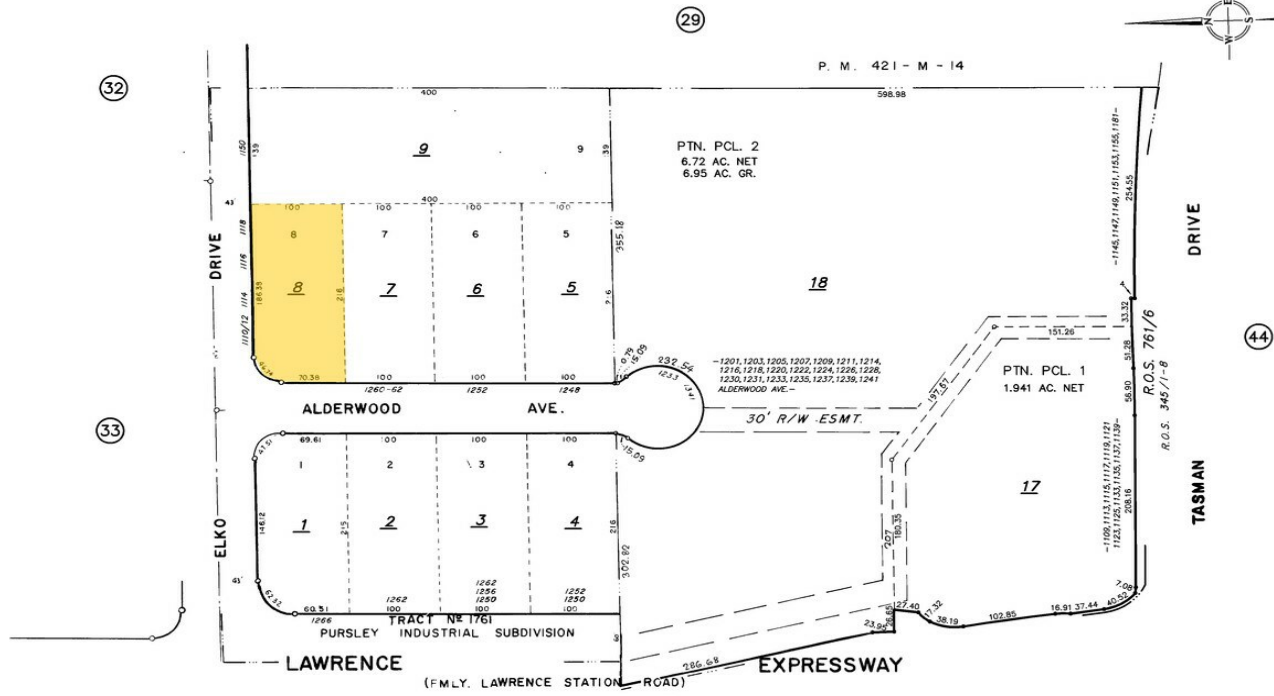
Property Photos



Property Photos

OFFICE OF COUNTY ASSESSOR — SANTA CLARA COUNTY, CALIFORNIA

BOOK 104 PAGE 24



TRA DET. MAP 92
LAWRENCE F. STONE — ASSESSOR
Consulted map for assessment purposes only.

304498_1118 Elko Dr. 30082578