

BUILDING EDGE COMPANY

6505 E. 82nd Street, Suite 209,
Indianapolis, IN 46250

E-MAIL: info@b-edge.com
WEBSITE: www.b-edge.com

PROJECT NAME
REMODELING

LW HOLDINGS 710 EAST
64TH STREET
INDIANAPOLIS, IN 46220

APPROVAL CIRCUIT AND REVISION HISTORY

12-09-2024	REV. 00
DATE	ISSUE

PROFESSIONALS SEAL

CLIENT NAME

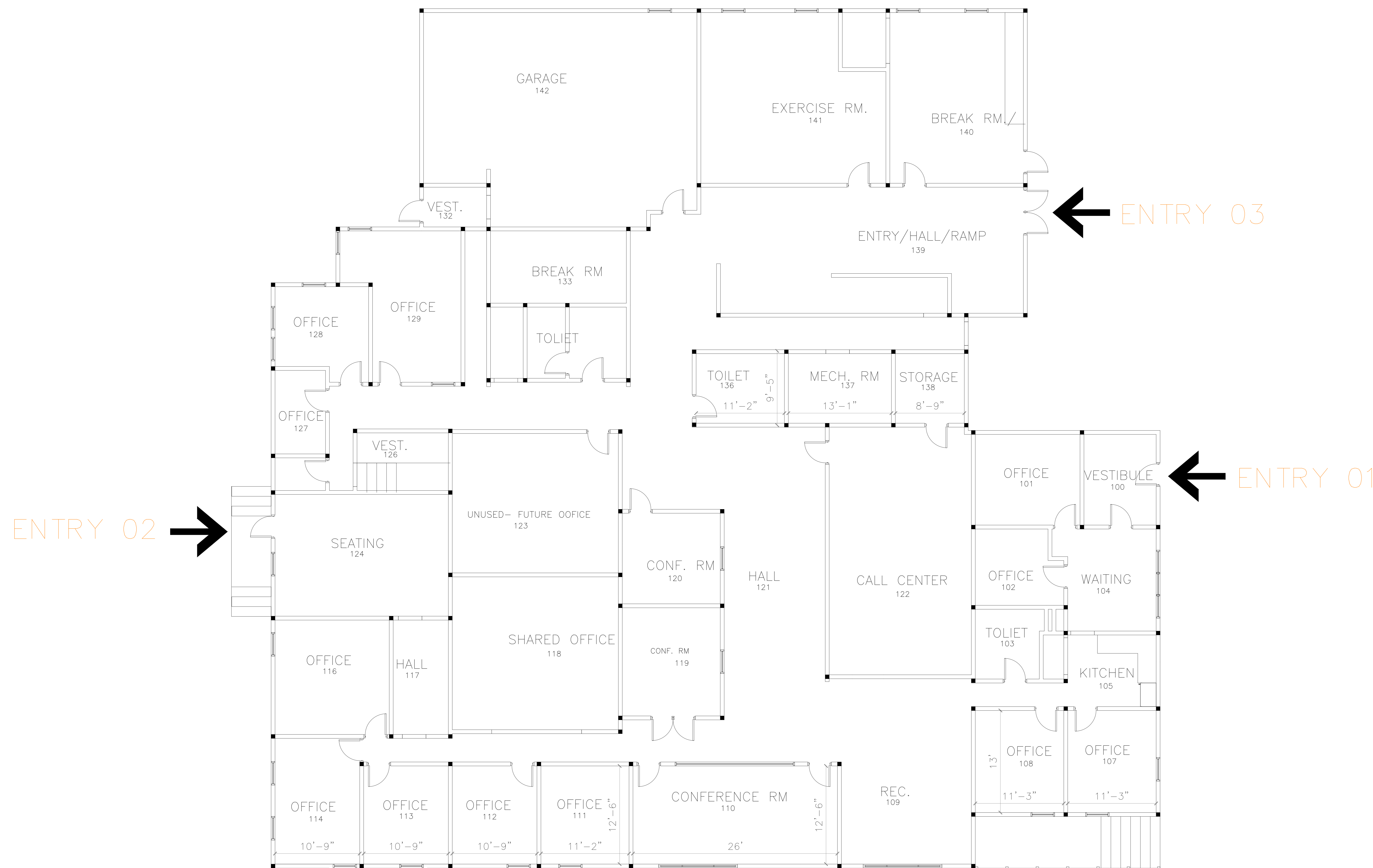
HAMADA IBRAHIM

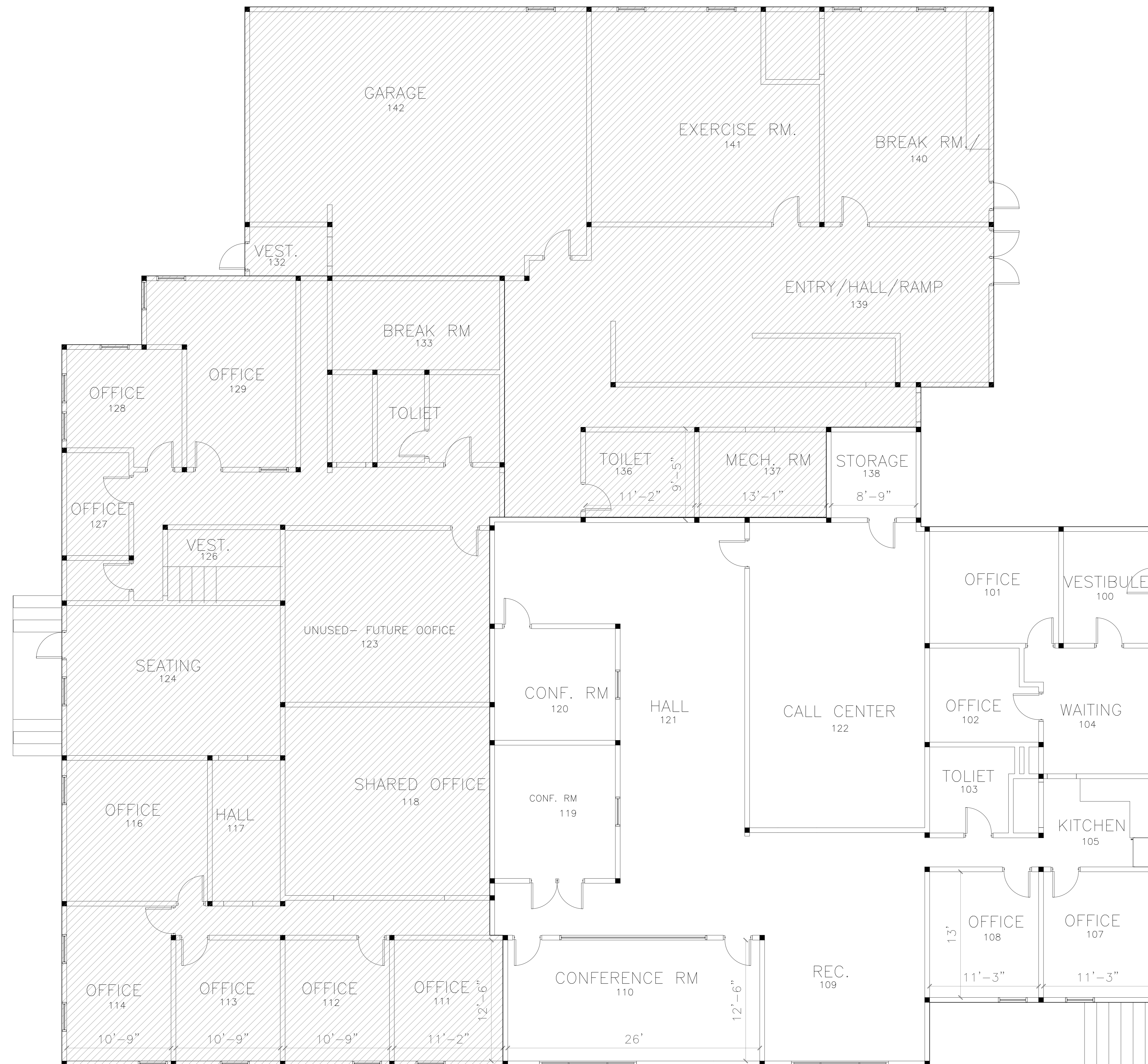
DRAWING TITLE

GROUND FLOOR GENERAL PLAN

DRAWING NUMBER

A100





← OFFICE 01
3785 Sq. Ft.



BUILDING EDGE COMPANY

6505 E. 82nd Street, Suite 209,
Indianapolis, IN 46250

E-MAIL: info@b-edge.com
WEBSITE: www.b-edge.com

PROJECT NAME
REMODELING

LW HOLDINGS 710 EAST
64TH STREET
INDIANAPOLIS, IN 46220

APPROVAL CIRCUIT AND REVISION HISTORY

12-09-2024	REV. 00
DATE	ISSUE

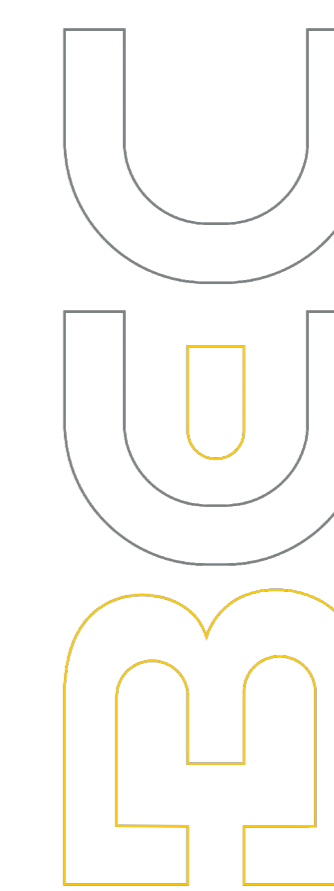
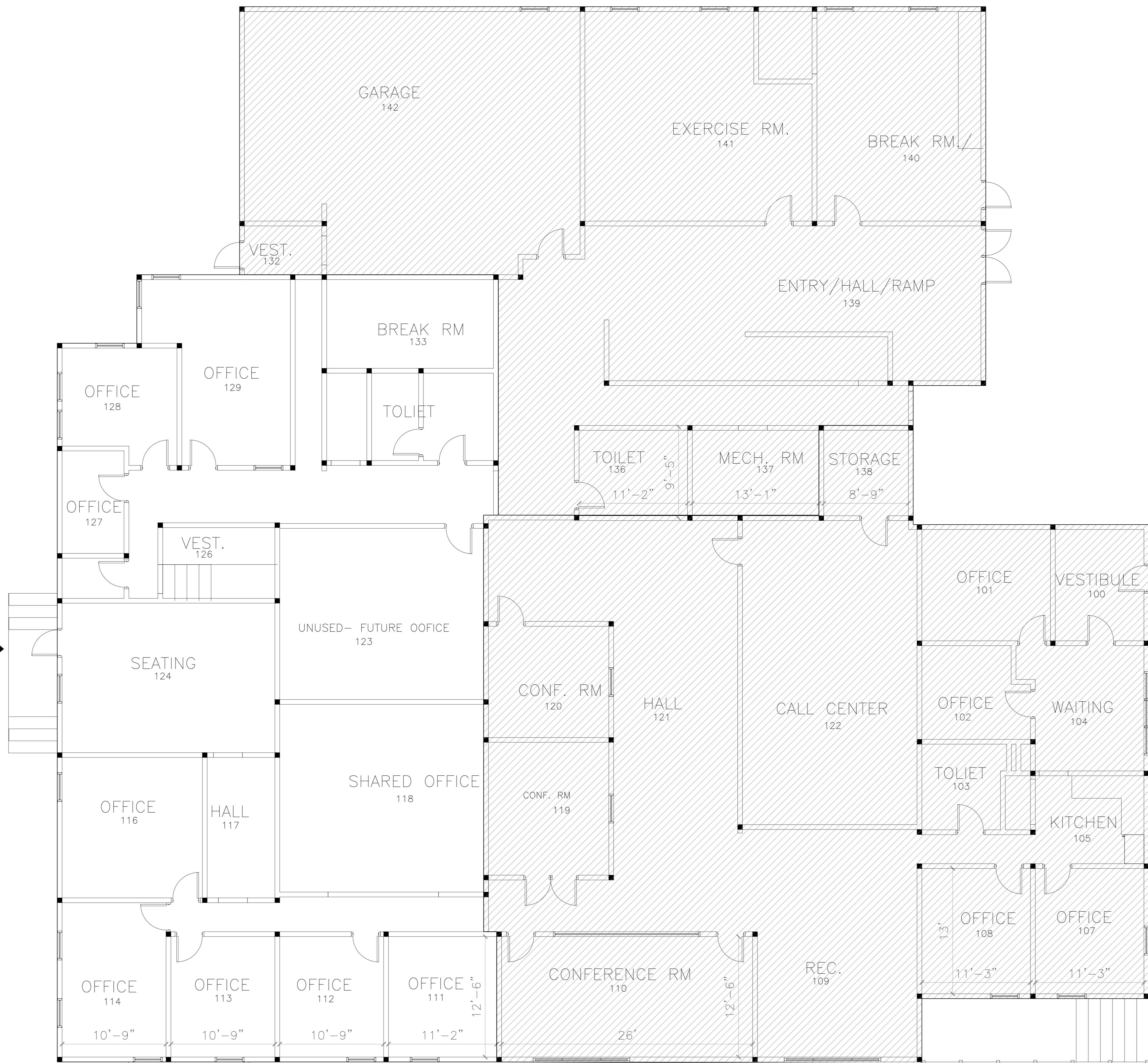
PROFESSIONALS SEAL

CLIENT NAME
HAMADA IBRAHIM

DRAWING TITLE
OFFICE 01

DRAWING NUMBER
A101

OFFICE 02
4580 Sq. Ft. →



BUILDING EDGE COMPANY

6505 E. 82nd Street, Suite 209,
Indianapolis, IN 46250

E-MAIL: info@b-edge.com
WEBSITE: www.b-edge.com

PROJECT NAME
REMODELING

LW HOLDINGS 710 EAST
64TH STREET
INDIANAPOLIS, IN 46220

APPROVAL CIRCUIT AND REVISION HISTORY

12-09-2024	REV. 00
DATE	ISSUE

PROFESSIONALS SEAL

CLIENT NAME

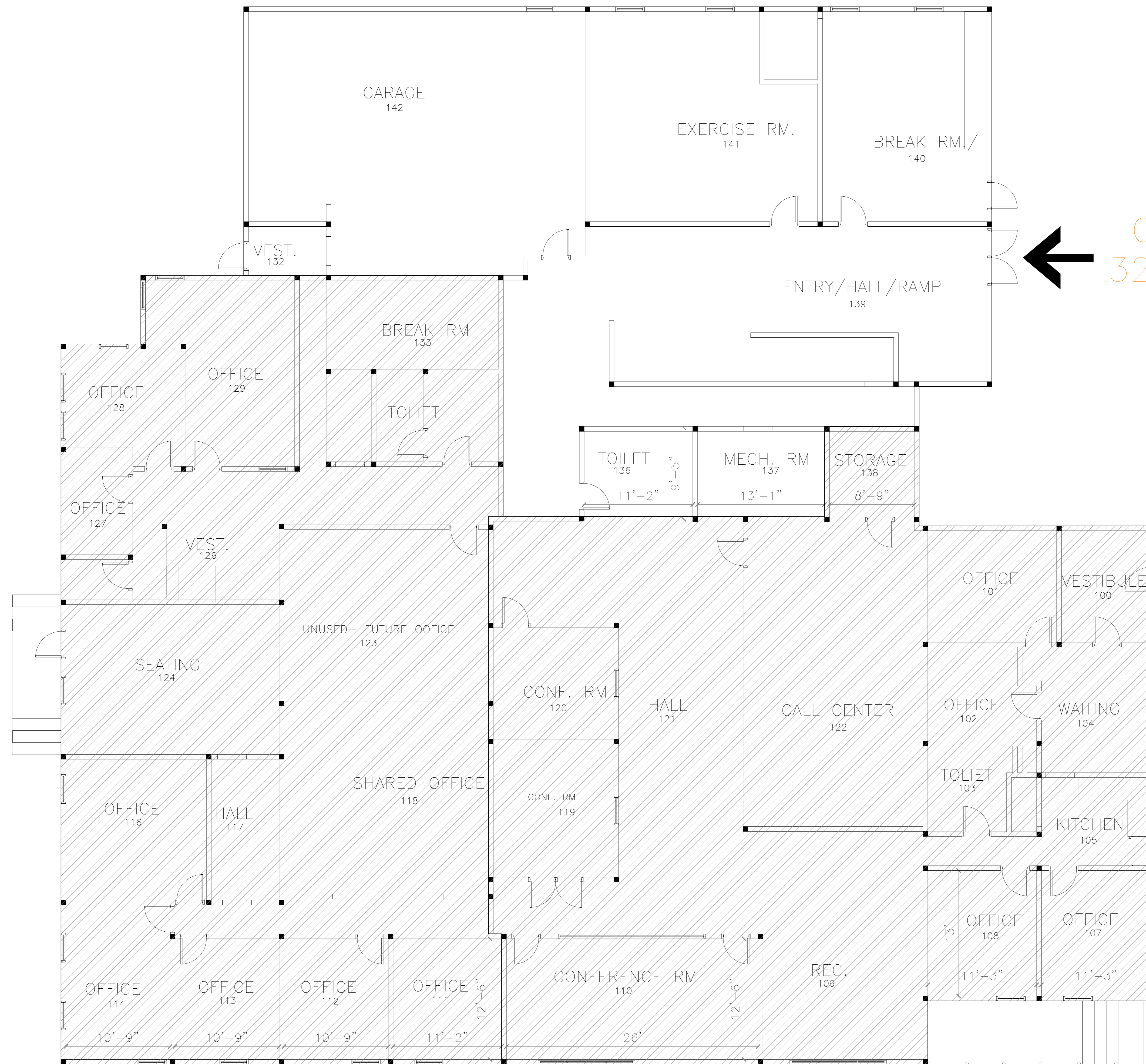
HAMADA IBRAHIM

DRAWING TITLE

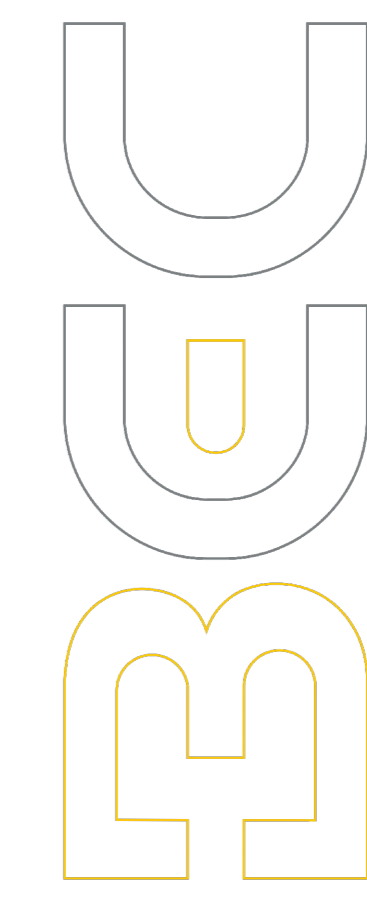
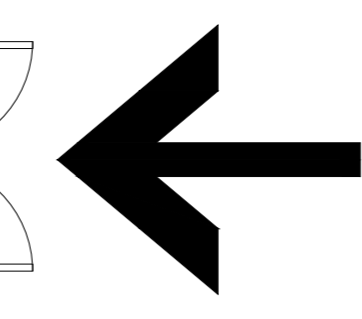
OFFICE 02

DRAWING NUMBER

A102



OFFICE 03
3200 Sq. Ft.



BUILDING EDGE COMPANY

6505 E. 82nd Street, Suite 209,
Indianapolis, IN 46250

E-MAIL: info@b-edge.com
WEBSITE: www.b-edge.com

PROJECT NAME
REMODELING

LW HOLDINGS 710 EAST
64TH STREET
INDIANAPOLIS, IN 46220

APPROVAL CIRCUIT AND REVISION HISTORY

12-09-2024	REV. 00
DATE	ISSUE

PROFESSIONALS SEAL

CLIENT NAME
HAMADA IBRAHIM

DRAWING TITLE
OFFICE 03

DRAWING NUMBER
A103