

Fingerlakes Crossing

1620-1622 Clark Street Road, Auburn NY 13021



45,000 SF Anchor Position & Pad Site Available for Sale or Lease

David Townes
Managing Director
+1 917 993 5515
david.townes@jll.com

Alana Friedman
Vice President
+1 201 741 0990
alana.friedman@jll.com

Amie Culver
CBRE Upstate NY
+1 315 663 1865
amie.culver@cbre-syr.com

Jaymes T. Keenan
CBRE Upstate NY
+1 585 615 1413
james.keenan@cbre-Rochester.com



1620-1622 Clark Street Rd, Auburn NY

Property Location

- » Fingerlakes Crossing Power Center located 40 minutes outside of Syracuse, NY in the Fingerlakes region
- » Dominant anchors include Home Depot, Kohl's & Petco
- » Across the street from Bass Pro Shops!
- » Easy access via Route 20/Clark Street Rd (14,460 VPD)

Space Availability

- » 45,000 SF – former Dick's Sporting Goods
- » Pad Site Available
- » 21.7' clear ceiling height (24' to the deck)
- » 1 loading dock
- » 800 amps electric
- » Ideal for Retail, Entertainment, Big Box, Medical, Self Storage, Warehouse and many other uses

Neighboring Tenants



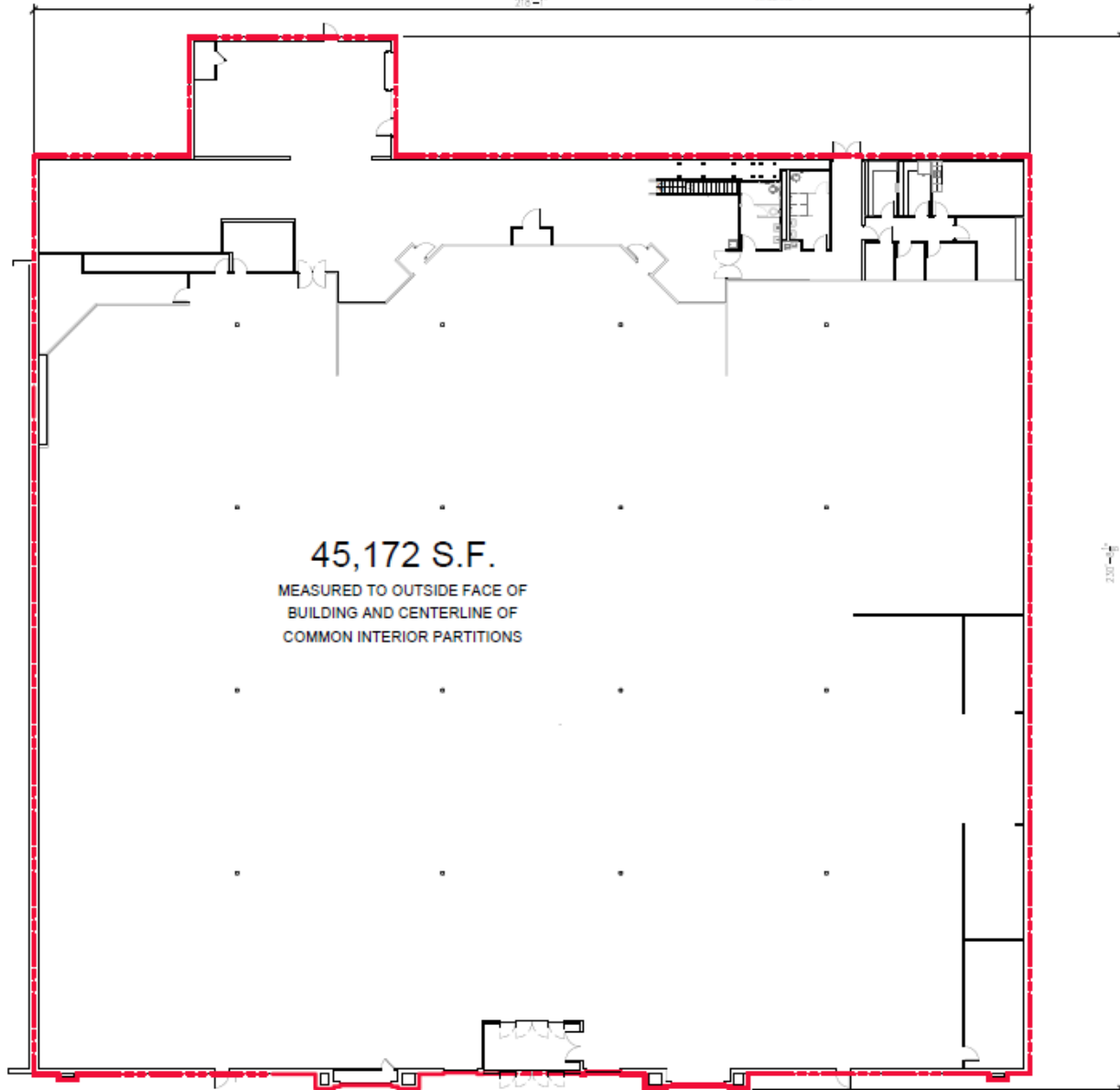
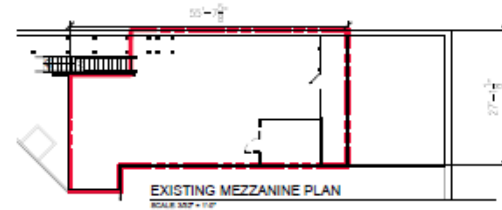
Site Plan



Floor Plan

1,459 S.F.

MEASURED TO OUTSIDE FACE OF
BUILDING AND CENTERLINE OF
COMMON INTERIOR PARTITIONS



45,172 S.F.

MEASURED TO OUTSIDE FACE OF
BUILDING AND CENTERLINE OF
COMMON INTERIOR PARTITIONS

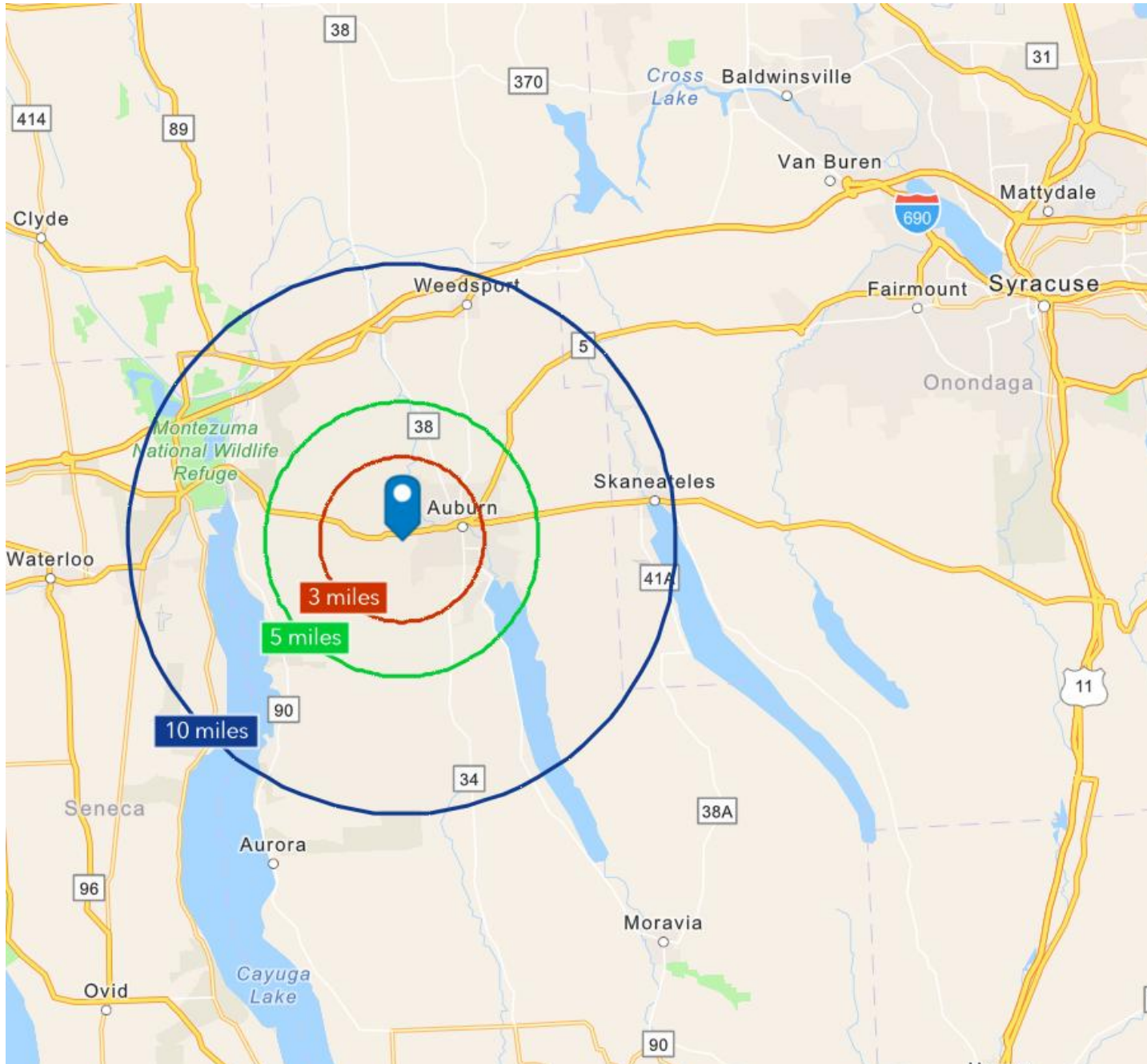


EXISTING MAIN LEVEL FLOOR PLAN
SCALE 3/32"

Interior Photos



Demographics



3 Mile	5 Mile	10 Mile
22,643	34,756	62,130

Population



3 Mile	5 Mile	10 Mile
\$50,419	\$60,110	\$66,499

Med. HH Income



3 Mile	5 Mile	10 Mile
26,214	36,408	60,478

Employees



3 Mile	5 Mile	10 Mile
1,037	1,470	2,459

Businesses



David Townes
 Managing Director
 M +1 917 993 5515
david.townes@jll.com

Alana Friedman
 Vice President
 M +1 201 741 0990
alana.friedman@jll.com

Amie Culver
 CBRE Upstate NY
 M +1 315 663 1865
amie.culver@cbre-syr.com

Jaymes T. Keenan
 CBRE Upstate NY
 +1 585 615 1413
james.keenan@cbre-Rochester.com

Although information has been obtained from sources deemed reliable, JLL does not make any guarantees, warranties or representations, express or implied, as to the completeness or accuracy as to the information contained herein. Any projections, opinions, assumptions or estimates used are for example only. There may be differences between projected and actual results, and those differences may be material. JLL does not accept any liability for any loss or damage suffered by any party resulting from reliance on this information. If the recipient of this information has signed a confidentiality agreement with JLL regarding this matter, this information is subject to the terms of that agreement. ©2024. Jones Lang LaSalle IP, Inc. All rights reserved.