



NEW OWNERSHIP - COMMITTED TO A BETTER TENANT EXPERIENCE

TROY TECHNOLOGY PARK - BLDG A
1960 TECHNOLOGY DRIVE
TROY, MI 48083



Contact Broker
For Pricing



±83,822 SF



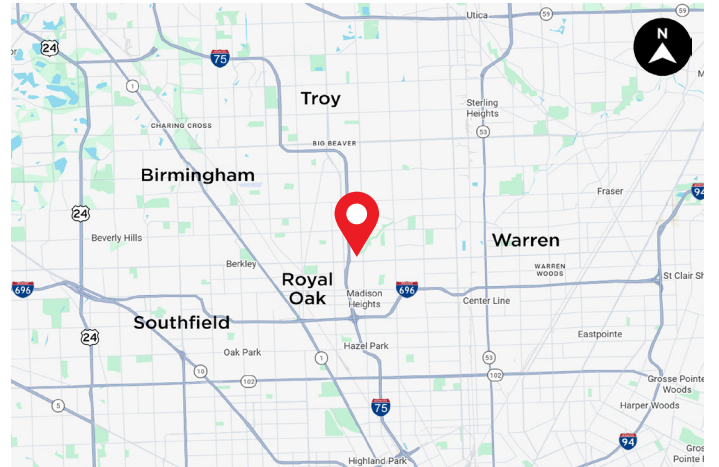
Elevator Access



3.77/1000 SF

PROPERTY HIGHLIGHTS

- 3-story office Building located in the front of Troy Technology Park
- Large, open floor plates with 10' ceilings and expansive window lines
- Suites ranging from ±2,000 SF up to a full floor for ±28,000 SF of office space
- Recently renovated lobbies and common areas
- Competitive leasing terms and incentives
- Prominent building façade and monument signage along John R or Industrial Drive
- Dedicated property management team committed to providing responsive service and maintaining high standards
- Fiber-optic internet connectivity and infrastructure in-place
- Ample parking and easy access for employees and visitors
- Major automotive and technology companies located within the park including Magna Powertrain, LG Energy, LG Electronics, LabCorp Group, and Rousch Industries
- Situated just North of Oakland Mall and within proximity of several restaurants and entertainment venues



ROBERT GAGNIUK
ROBERT.GAGNIUK@FREG.COM

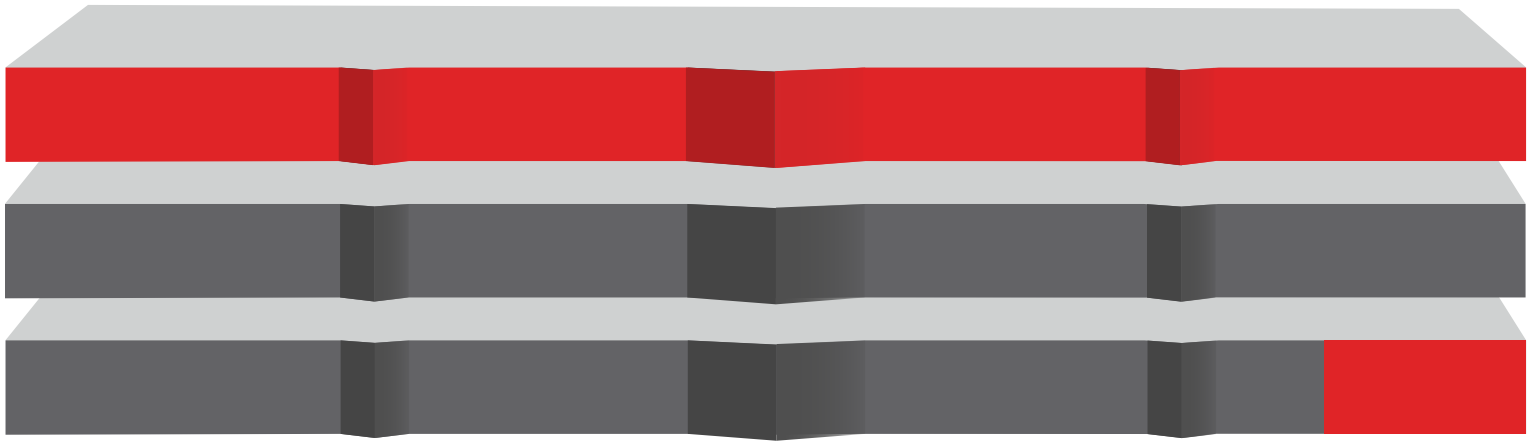


JARED FRIEDMAN
JARED.FRIEDMAN@FREG.COM

TROY TECHNOLOGY PARK - BLDG A PROPERTY OVERVIEW



TROY TECHNOLOGY PARK - BLDG A PROPERTY OVERVIEW



■ AVAILABLE

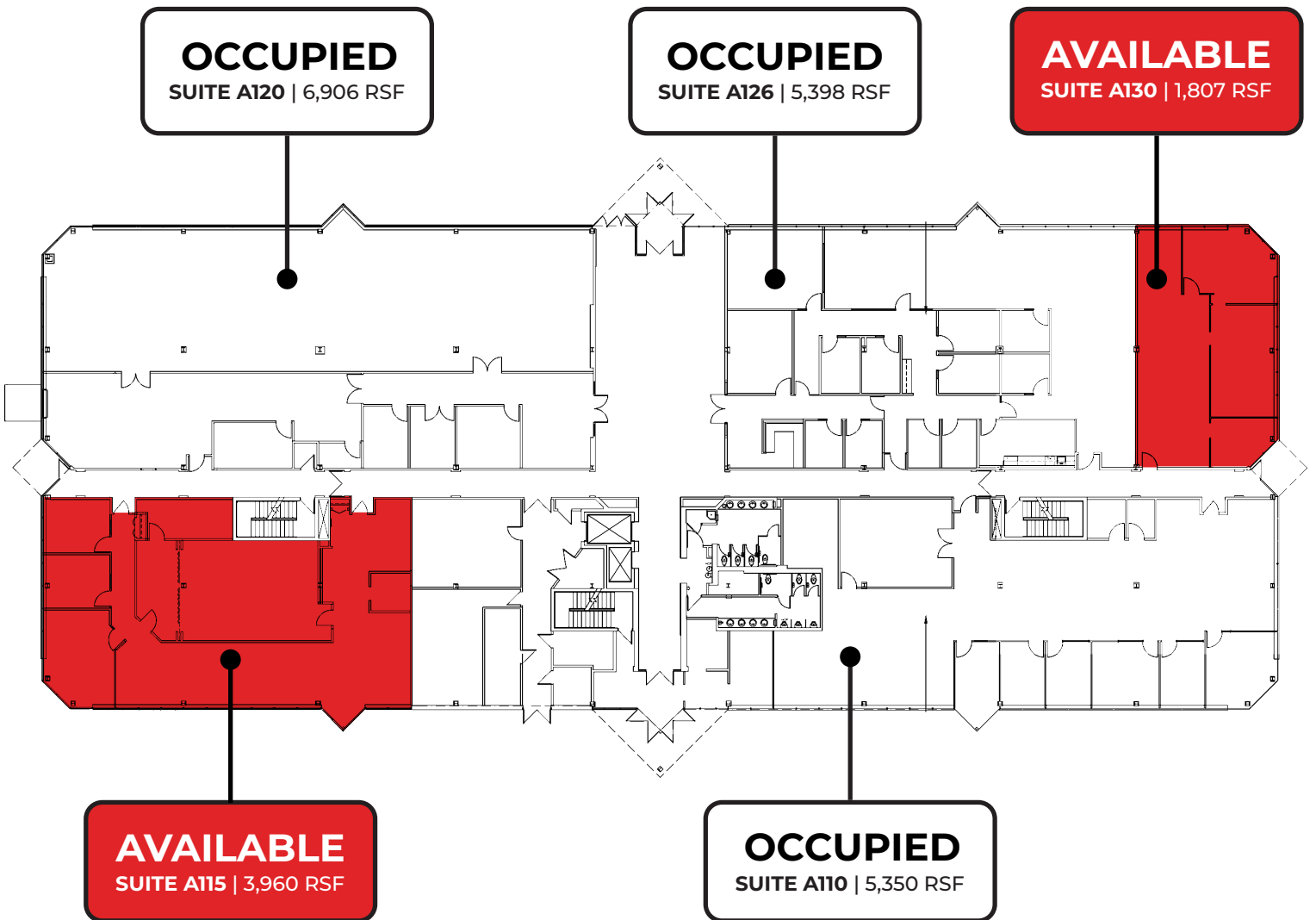
■ OCCUPIED

PROPERTY DETAILS	
Address	1960 Technology Drive
Number of Floors	3
Building Size:	± 83,822 SF
Year Built:	1985; Renovated in 2005
Property Type:	Office

AVAILABLE SF	
3 RD Floor	± 29,922 SF
2 ND Floor	-
1 ST Floor	± 5,767 SF
Contiguous	± 29,922 SF
Total Available	± 35,689 SF

TROY TECHNOLOGY PARK - BLDG A

FLOOR PLAN - 1ST FLOOR



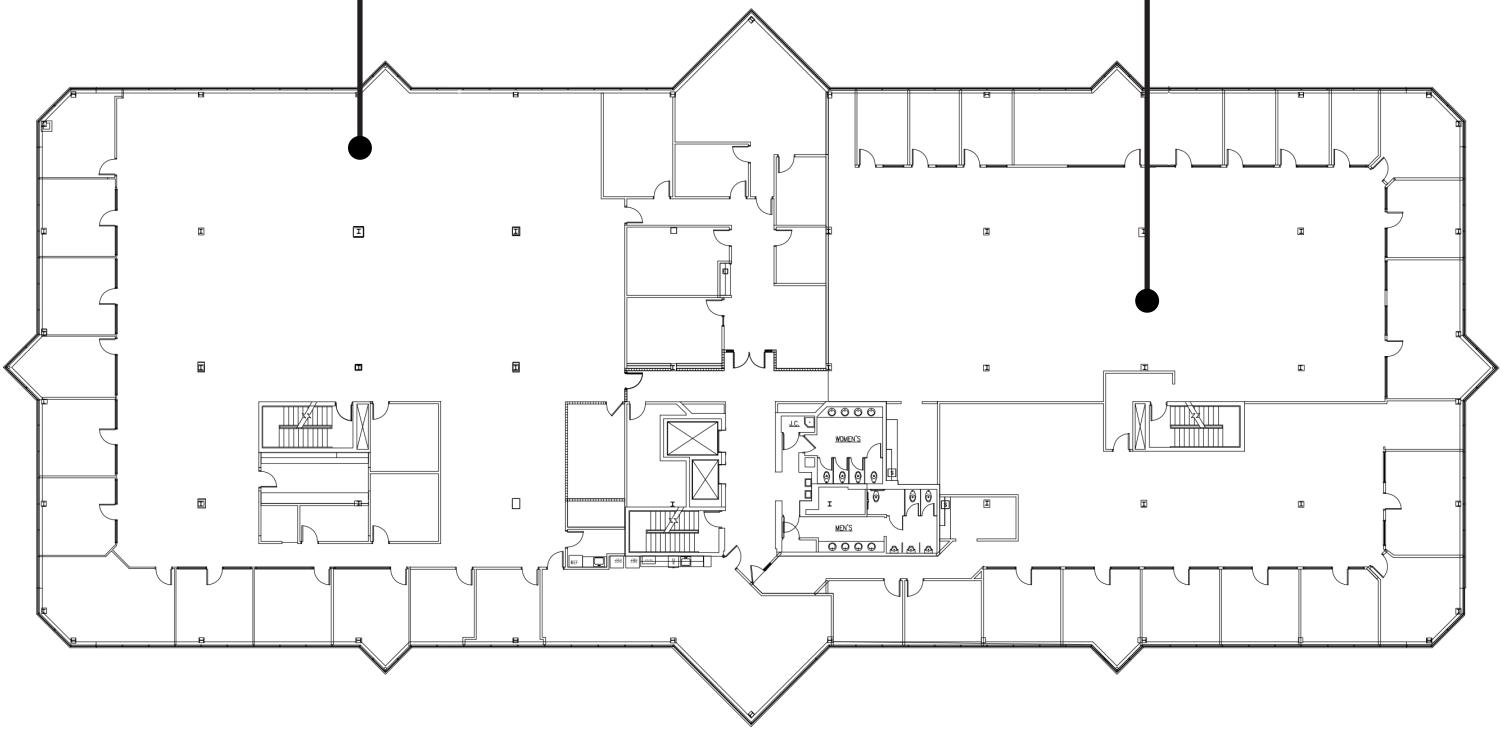
TROY TECHNOLOGY PARK - BLDG A

FLOOR PLAN - 2ND FLOOR



OCCUPIED
SUITE A200 | 16,544

OCCUPIED
SUITE A250 | 13,350 RSF



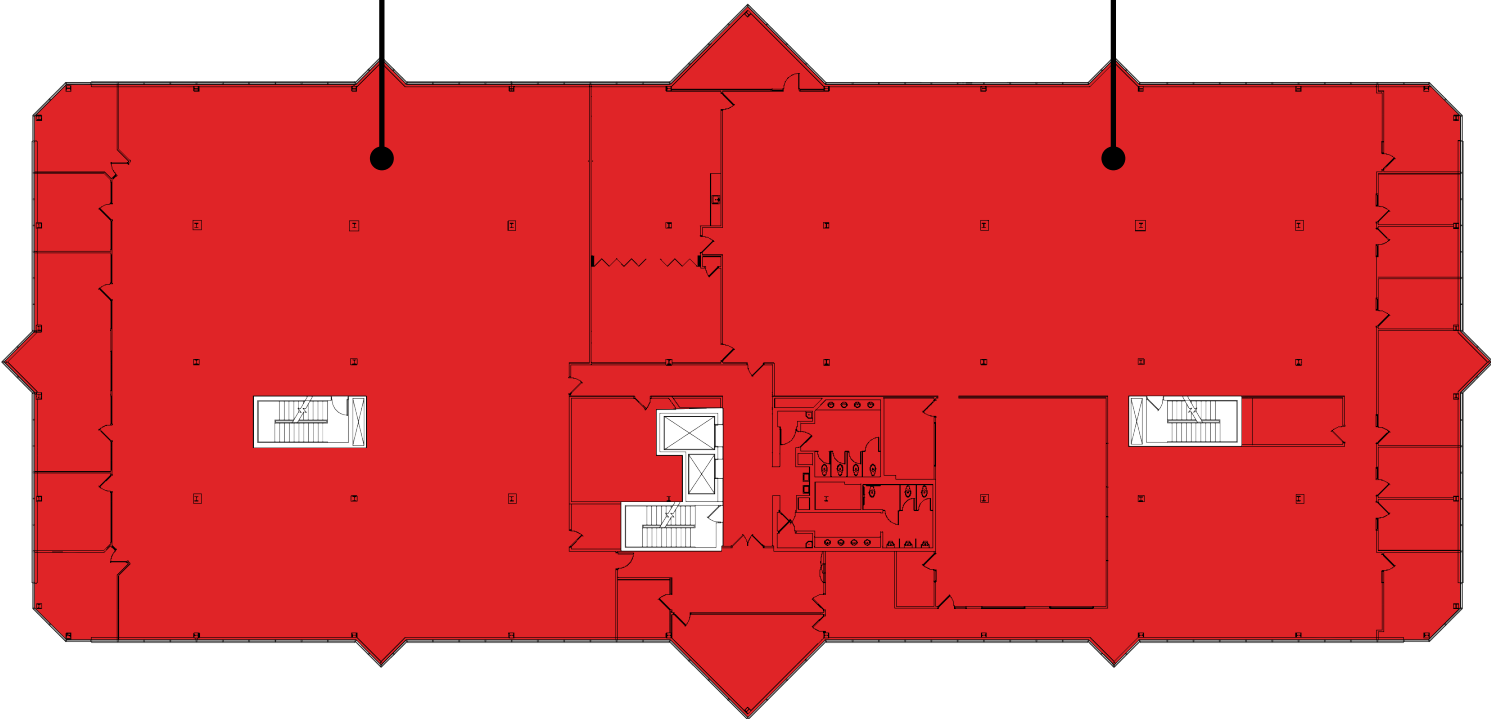
TROY TECHNOLOGY PARK - BLDG A

FLOOR PLAN - 3RD FLOOR



AVAILABLE
SUITE A300 | 17,257 RSF

AVAILABLE
SUITE A309 | 12,665 RSF



TROY TECHNOLOGY PARK - BLDG A

AERIAL MAPS

