

## PROLOGIS FREMONT PARKING/YARD

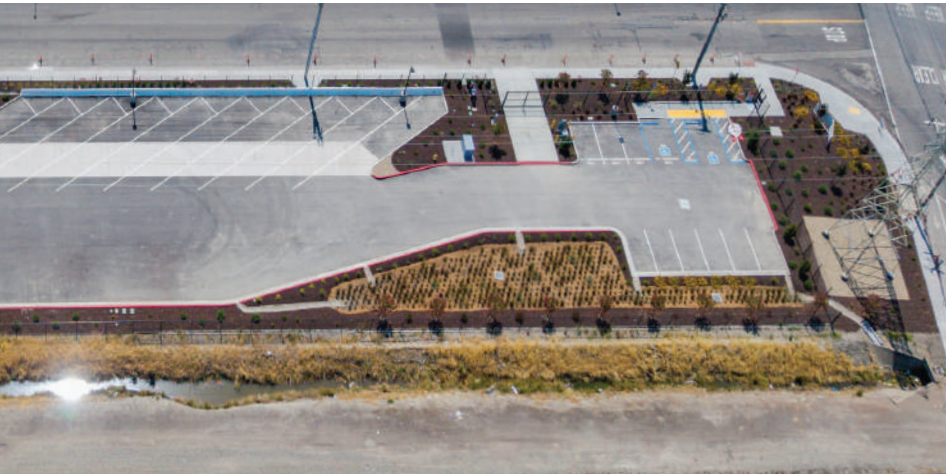


# 6150 STEWART AVE. FREMONT, CA

±5.80 Acres (Divisible) Trailer/Fleet/Auto Parking



**AVAILABLE**  
**±5.80 Acres**



## SITE FEATURES:

- ±5.80 Acres
- Paved & Fenced/Secured Yard
- Lighting & ±2,500 Amps of Power On-Site

## PARKING:

- 94 Trailer Stalls (55')
- 18 Tractor Stalls (30')
- Vehicle/Van Stalls
- EV capable Stalls

## ZONING:

- General and/or Tech Industrial



## DIVISIBLE OPTIONS

±3.08 or ±2.72 Acres



### SITE A: ±3.08 Acres

#### Parking:

- 47 Trailer Stalls (55')
- 11 Tractor Stalls (30')
- 11 Auto Stalls

### SITE B: ±2.72 Acres

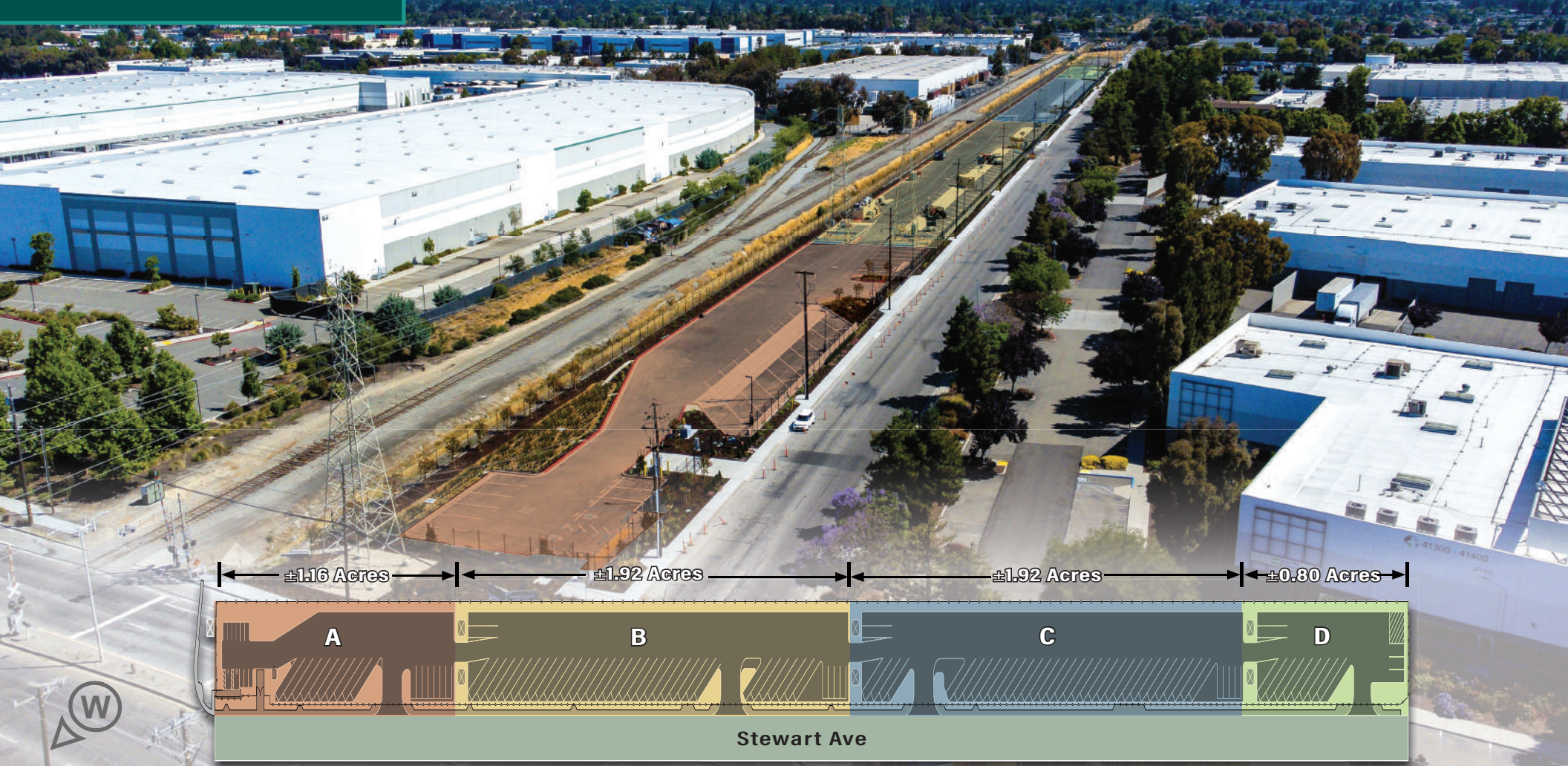
#### Parking:

- 47 Trailer Stalls (55')
- 7 Capable Tractor Stalls (30')



## DIVISIBLE OPTIONS

±0.80 - ±1.92 Acres



### SITE A: ±1.16 Acres

#### Parking:

- 10 Trailer Stalls (55')
- 7 Tractor Stalls (30')
- 11 Auto Stalls

### SITE B: ±1.92 Acres

#### Parking:

- 37 Trailer Stalls (55')
- 4 Tractor Stalls (30')

### SITE C: ±1.92 Acres

#### Parking:

- 36 Trailer Stalls (55')
- 4 Capable Tractor Stalls (30')

### SITE D: ±0.80 Acres

#### Parking:

- 11 Trailer Stalls (55')
- 3 Capable Tractor Stalls (30')



## LOCATION HIGHLIGHTS

The property is ideally situated in one of Fremont's premier industrial submarkets, adjacent to the Pacific Commons Retail Power Center and the extensive cluster of major auto dealerships in the Fremont Auto Mall. With direct access to Highways 880, 680, and 92, the site is strategically positioned to serve Silicon Valley, the SF Peninsula, and the East Bay—making it an ideal location for a variety of businesses.

- 1 mile to I-880 via multiple interchanges
- 3 miles to I-680
- 7 miles to Dumbarton Bridge (84)
- 8 miles to 237
- 14 miles to San Jose Airport
- 15 miles to San Mateo Bridge (92)



# NEWMARK

**JOE KELLY**

Vice Chairman  
+1 408 987 4111  
joe.kelly@nmrk.com  
CA RE Lic #01420963

CURTIS STAHL

Director  
+1 510 300 0222  
curtis.stahle@nmrk.com  
CA RE Lic #01955258



**CLAIRE WILSON**

Leasing Manager  
+1 925-813-8623  
cwilson2@prologis.com  
CA RE Lic #01982067