



5,400SF AVAILABLE

2,000SF AVAILABLE

121 NEWARK AVENUE
JERSEY CITY, NJ 07302

Gregory D. Edgell
Licensed Real Estate Broker
C: (973) 610-5145
greg@gridrealestate.biz



– Full Floor Medical Office Space Available On Pedestrian Plaza!

- Join thriving Medical Arts building at 121 Newark Ave—Jersey City's only boutique office building sitting directly on top of Grove Street Path Station and Restaurant Row
- Strong cotenancy featuring Spine & Sport Health Center, Heights Orthodontics, JC Oral Surgery, Vita Dental Arts and Raj Mukerji State Legislative Offices
- Significant capital improvement project completed in 2024 featuring new facade, brand new elevator mechanicals, lobby renovation, common bathrooms and new entrance vestibule
- The commute to Manhattan is the best available which provides an 11 minute commute to World Trade Center and an 18 minute ride to Midtown Manhattan (33rd St. & 6th Ave).
- **Additional 4,000SF full floor opportunity at 175 Newark Avenue with private parking lot**

BUILDING SIZE

42,735SF

AVAILABLE

SPACE 1: 1,000SF
SPACE 2: 2,000SF
SPACE 3: 6,000SF
SPACE 4: 4,000SF

ELEVATOR

(2) PASSENGER

CEILING HEIGHT

10'

POSSESSION

IMMEDIATE

SPRINKLER

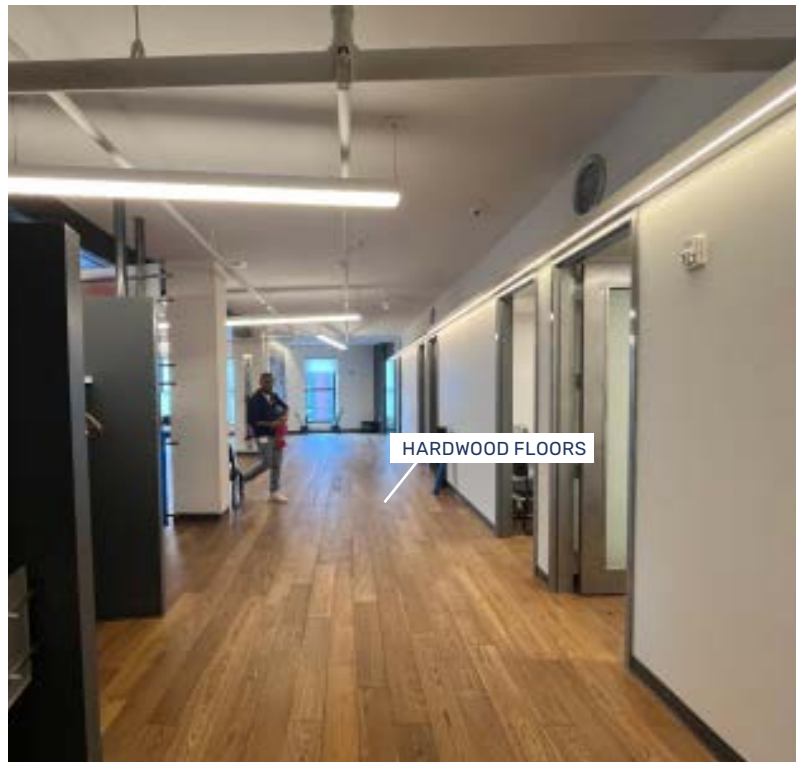
WET SYSTEM

NOTES

- ADA ENTRANCE ON NEWARK AVE, SECONDARY ENTRANCE ON COLUMBUS
- BUTTERFLY MX ACCESS SYSTEM



EXPOSED CEILINGS

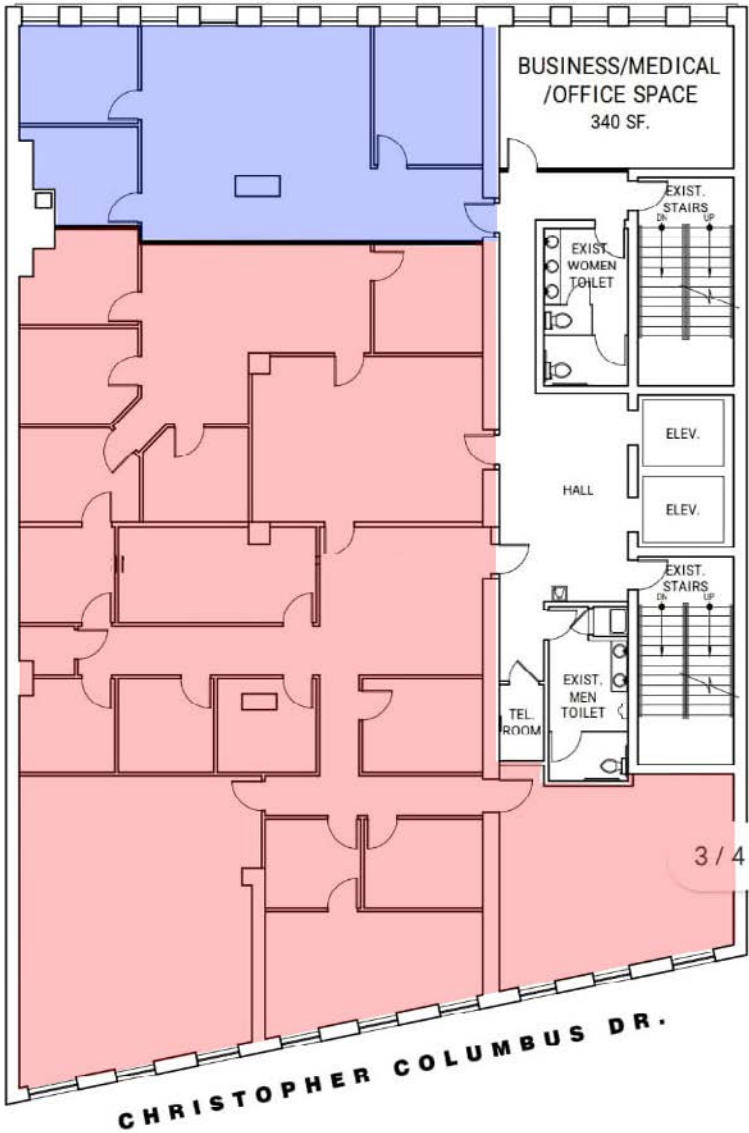


HARDWOOD FLOORS



MODERN LOBBY

NEWARK AVENUE



DESCRIPTION

THIRD FLOOR OFFERS A RARE OPPORTUNITY TO CONSOLIDATE BOTH THE BLUE AND RED SPACES TO CREATE A NEAR FULL FLOOR SPACE. WITH LIGHT FROM NEWARK AND COLUMBUS AVE AND ACCESS TO SHARED BATHROOMS IN HALLWAY.

SPACE 1

1,000SF

SPACE 2

5,000SF

3rd FLOOR PLAN
SCALE 1/8" = 1'-0"



