

For Lease



JEFFREY R. BECKER CCIM . CPM . RPA

805.653.6794

jbecker@beckergrp.com

CA DRE #01213236

40 SOUTH ASH STREET | VENTURA, CA 93001 | 805.653.6794 | BECKERGRP.COM



PROPERTY DESCRIPTION

Beautiful class A office space with excellent access to the 101 Freeway. 6,000sf divisible to 3,000sf. Entire second floor available of this high-Image corner building. Current layout is a combination of large executive offices, smaller private offices, conference room, break room and large open bull-pen. Abundant onsite parking.

LOCATION DESCRIPTION

At the intersection of East Gonzales Rd and Solar Dr. Accessible to the 101 Freeway via Rice Ave.

CONTACT INFORMATION

To find out more or setup a tour, please contact:
 Jeffrey R. Becker | 805.653.6794 ext. 201 | jbecker@beckergroup.com
 Matthew Kingsley | 805.653.6795 ext. 214 | mkingsley@beckergroup.com

JEFFREY R. BECKER CCIM . CPM . RPA

805.653.6794

jbecker@beckergroup.com

CA DRE #01213236

OFFERING SUMMARY

Lease Rate:	\$2.25 SF/month (MG)
Available SF:	6,000 SF
Building Size:	6,000 SF

DEMOGRAPHICS	1 MILE	2 MILES	3 MILES
Total Households	2,905	11,025	27,678
Total Population	10,578	44,570	101,306
Average HH Income	\$98,407	\$90,221	\$86,104

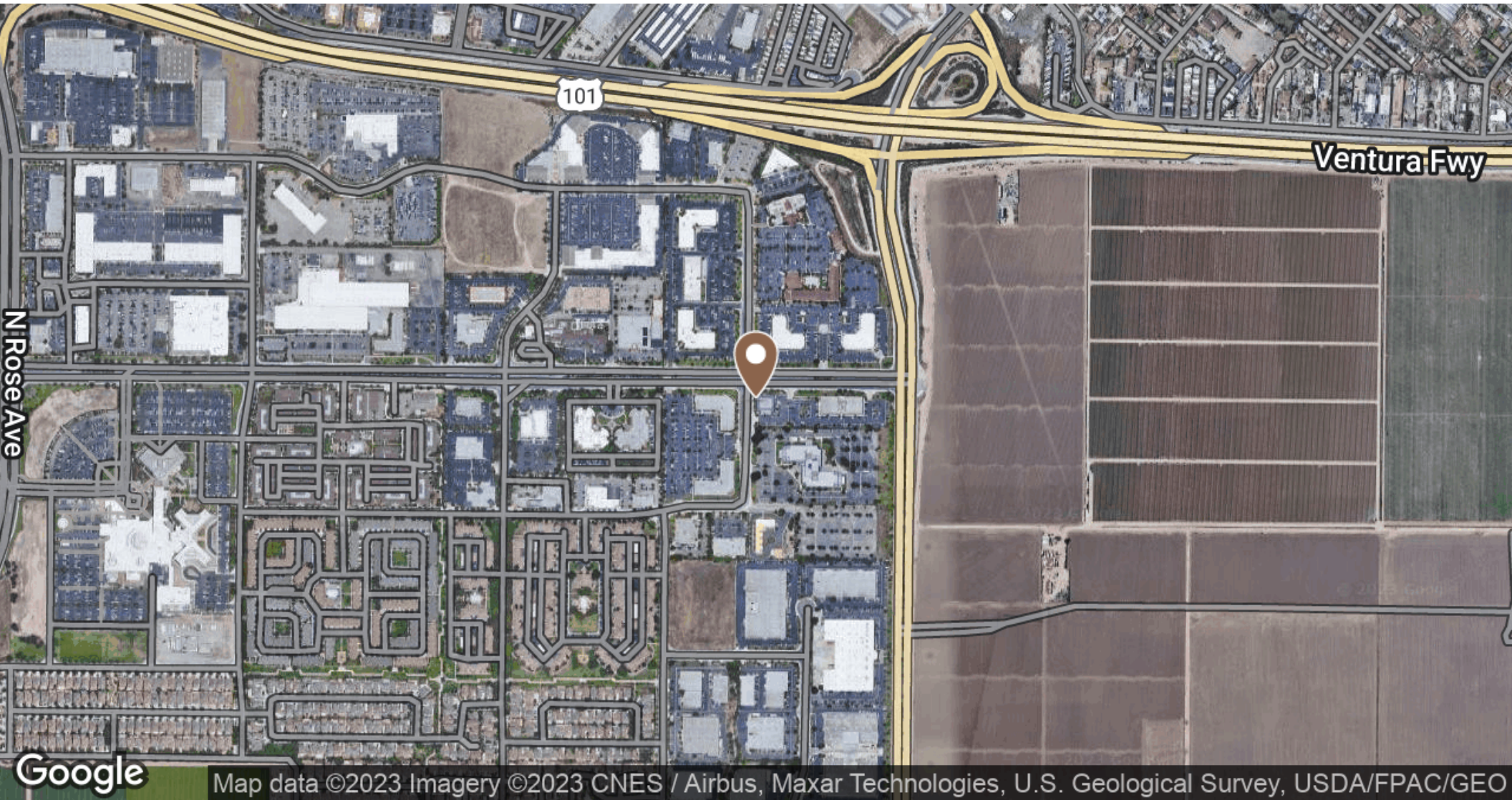


JEFFREY R. BECKER CCIM . CPM . RPA

805.653.6794

jbecker@beckergroup.com

CA DRE #01213236

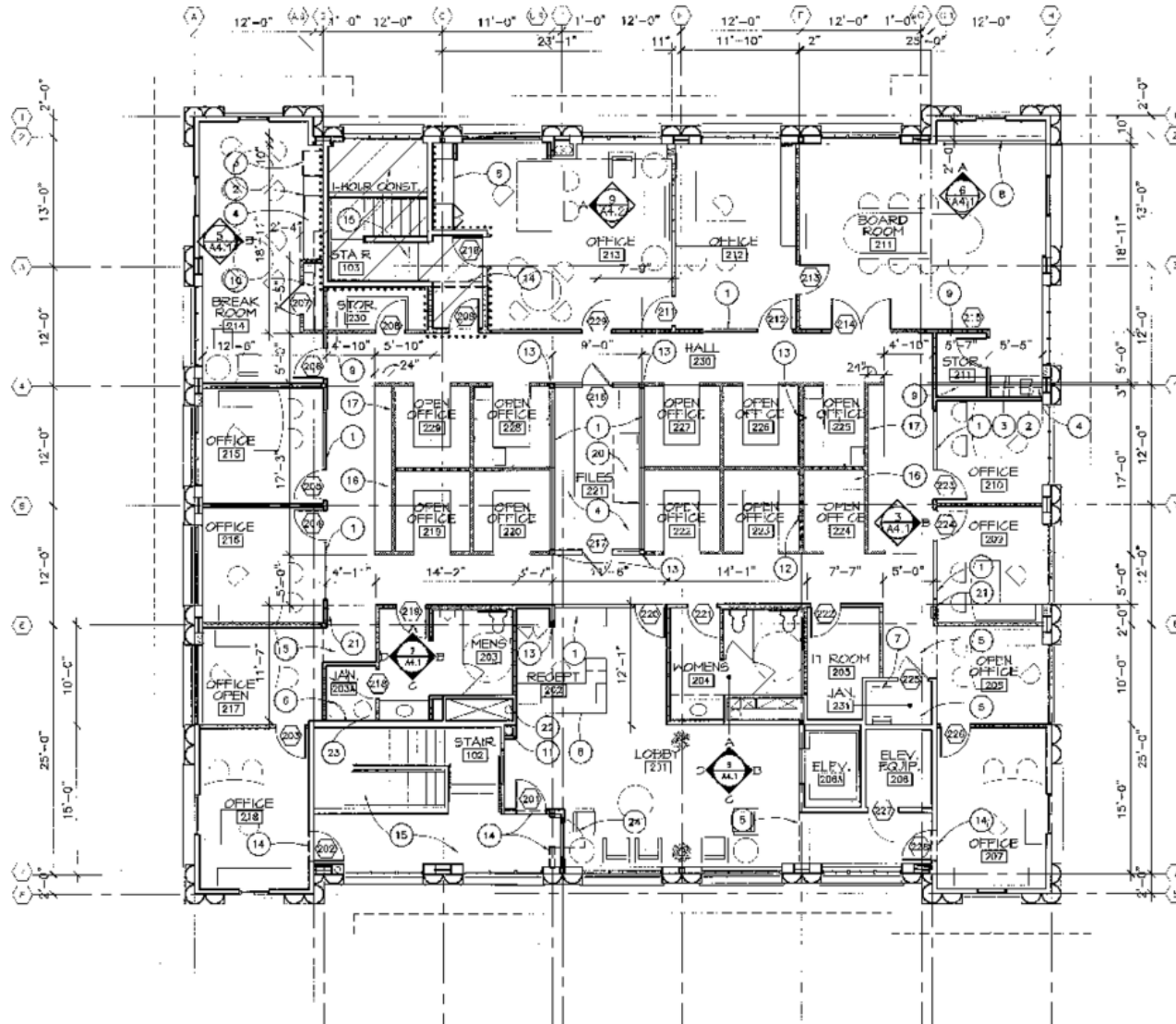


JEFFREY R. BECKER CCIM . CPM . RPA

805.653.6794

jbecker@beckergroup.com

CA DRE #01213236



JEFFREY R. BECKER CCIM . CPM . RPA

805.653.6794

jbecker@beckergroup.com

CA DRE #01213236