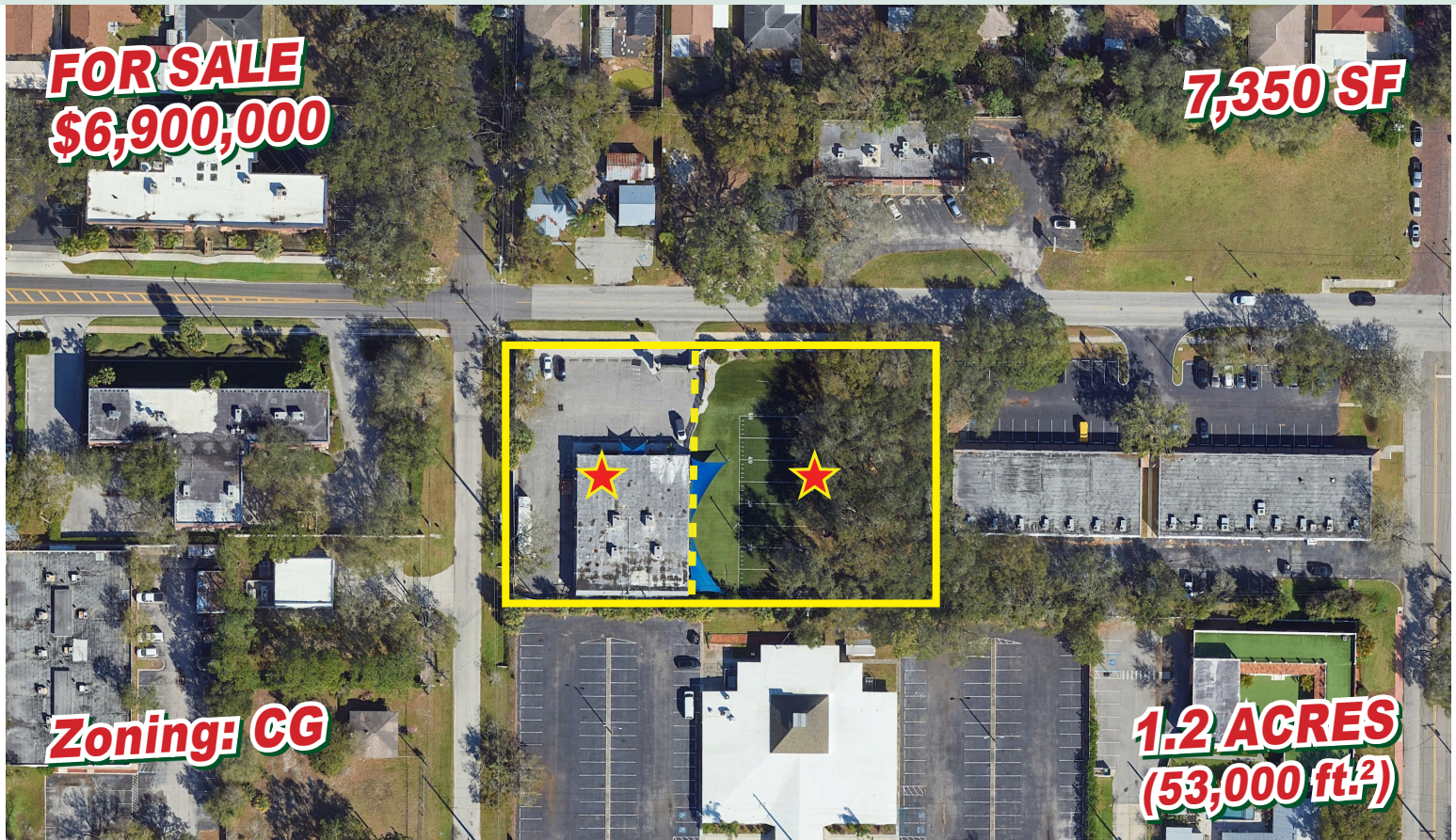


Future Redevelopment/ Medical/Professional Office



An absolute unicorn of a property located in the heart of Midtown. The property offers multiple opportunities for the right buyer.

3330 W Cypress St., Tampa, FL 33614



Property Highlights

- 1.2 acres (53,000 ft.²) completely fenced w/security gate and call box
- \$2 million in renovations in 2016
- Potential redevelopment to a townhouse or apartments/condos
- Digital billboard/monument sign
- Future land use is CMU - 35 with an FAR of 2
- 90% of the trees have been removed and all the tree removal was permitted

FOR MORE INFORMATION CONTACT

Chris Parrado, Sales Associate

Off 813.242.6464 Ext 23

Cel 813.294.7187

cparrado@alcommercialinc.com

www.alcommercialinc.com



Future Redevelopment/ Medical/Professional Office



FOR MORE INFORMATION CONTACT

Chris Parrado, Sales Associate

Off 813.242.6464 Ext 23

Cel 813.294.7187

cparrado@alcommercialinc.com

www.alcommercialinc.com



Future Redevelopment/ Medical/Professional Office



FOR MORE INFORMATION CONTACT

Chris Parrado, Sales Associate

Off 813.242.6464 Ext 23

Cel 813.294.7187

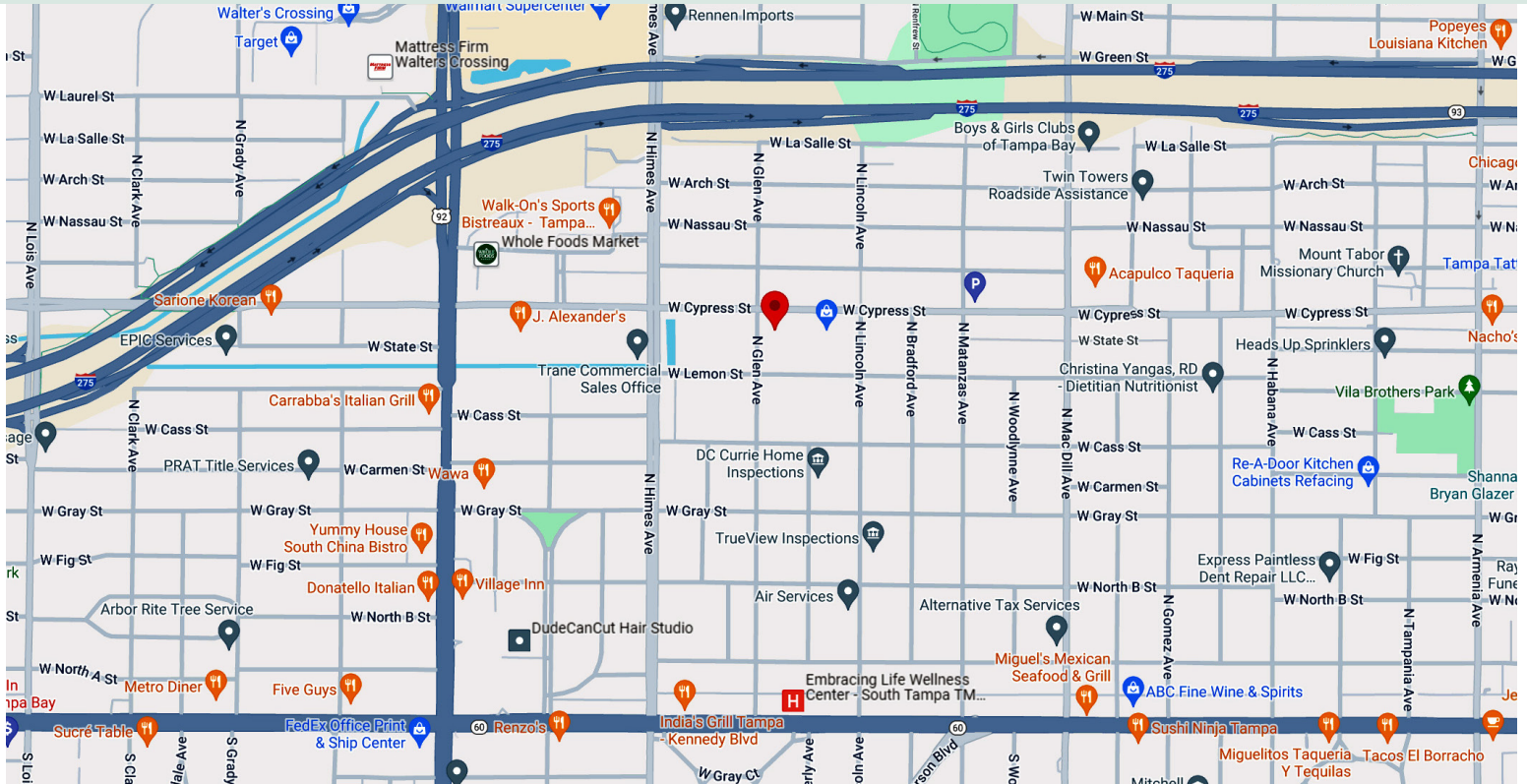
cparrado@alcommercialinc.com

www.alcommercialinc.com

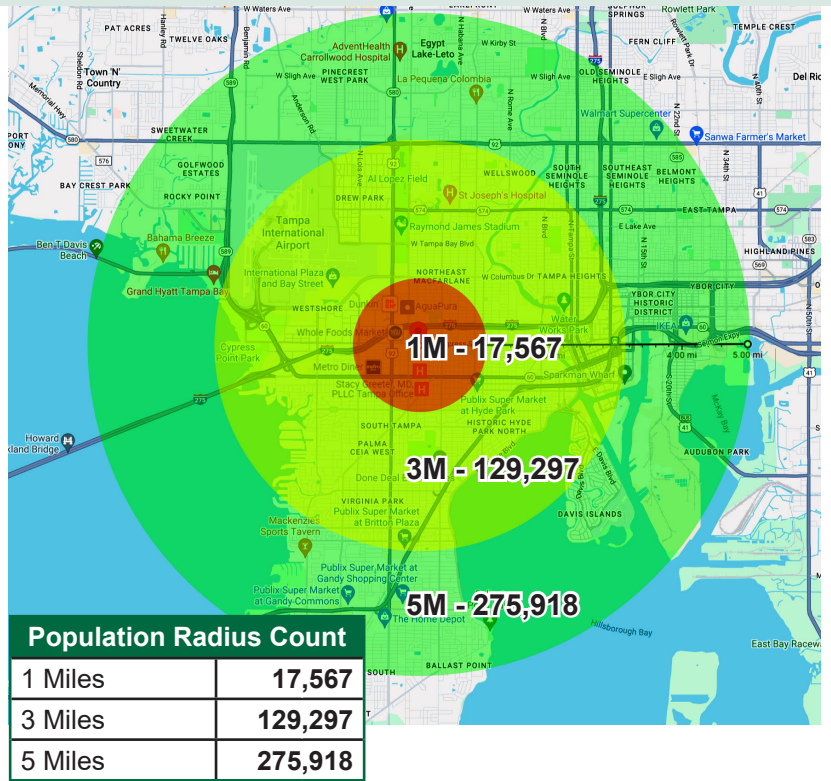
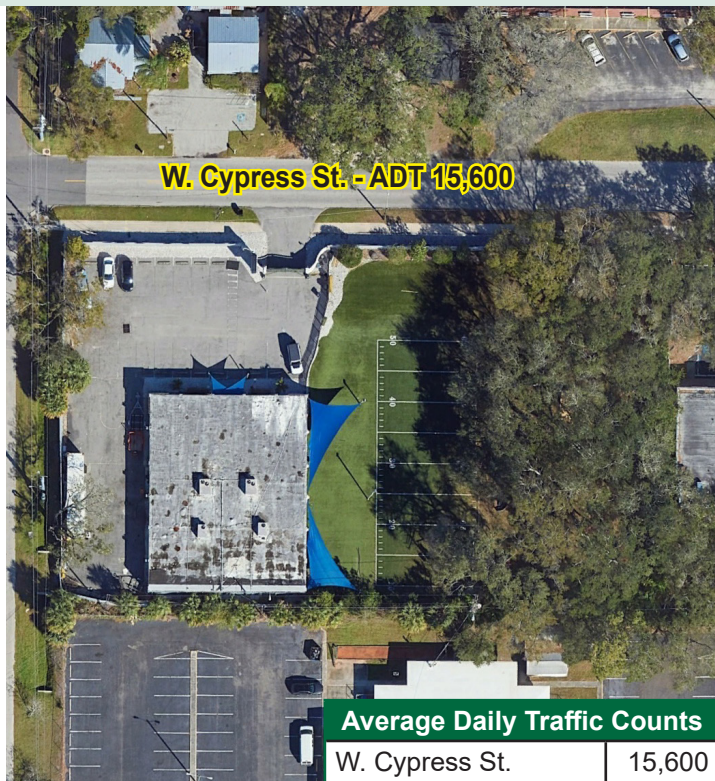


Future Redevelopment/ Medical/Professional Office

Population Radius Map



3330 W Cypress St., Tampa, FL 33614



FOR MORE INFORMATION CONTACT

Chris Parrado, Sales Associate

Off 813.242.6464 Ext 23

Cel 813.294.7187

cparrado@alcommercialinc.com

www.alcommercialinc.com

