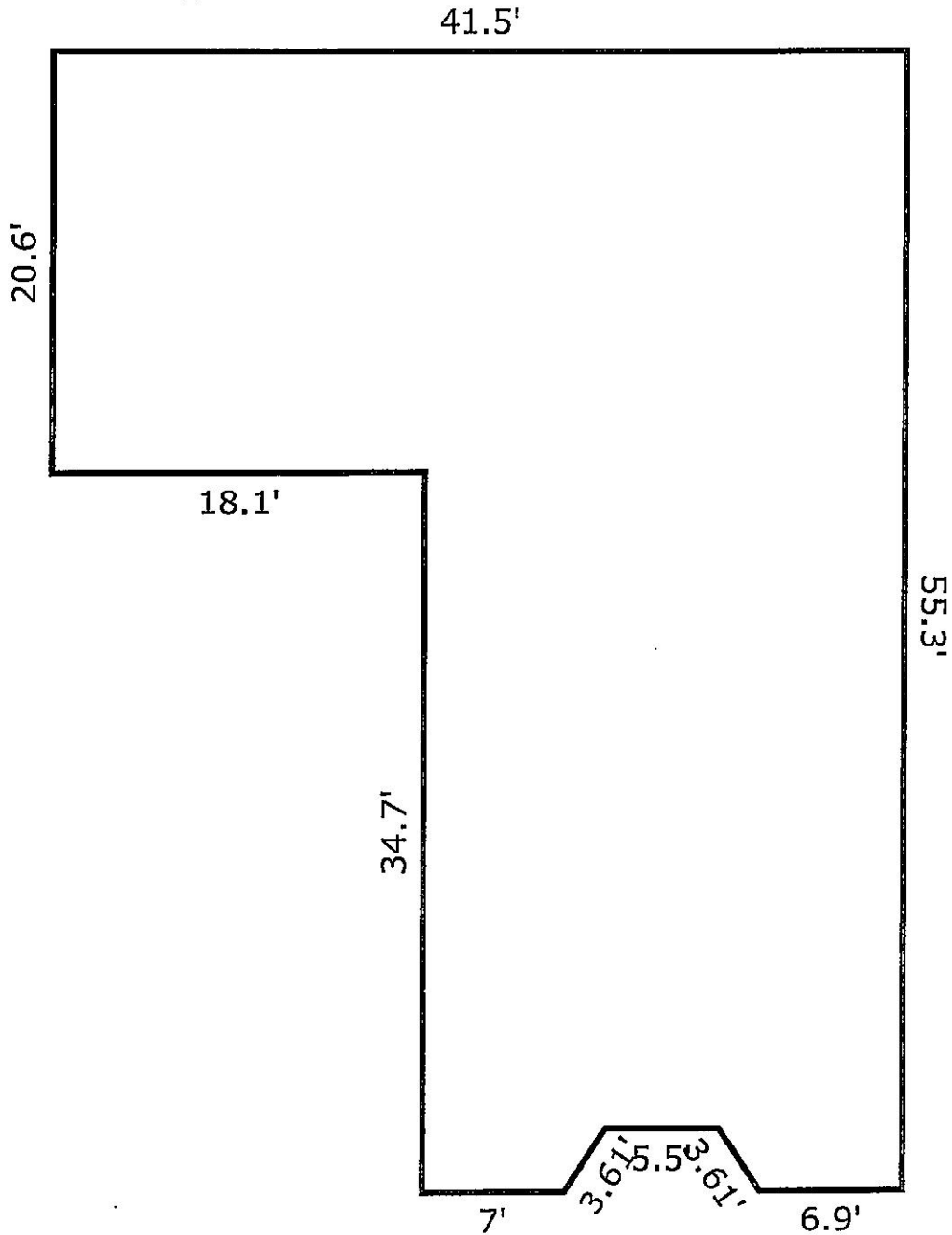


3400 Oak Lawn, Dallas, Texas 75219

1,644 SF/Appraiser - C.L. McDade & Company 12/29/2021

Total Rentable Area – 6,949 SF

Sizes & dimensions noted are approximate & not guaranteed. Tenant/Agent to verify.



TOTAL Sketch software by a la mode, inc.

Area Calculations Summary

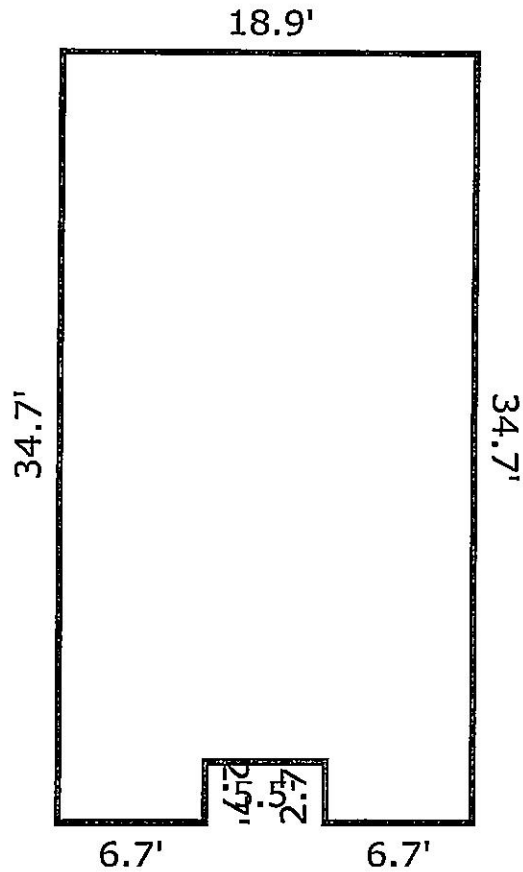
	Area Calculations Summary	Calculation Details
Living Area		
Undefined Area	1644.38 Sq ft	$20.6 \times 18.1 = 372.86$ $23.4 \times 52.3 = 1223.82$ $3 \times 7 = 21$ $0.5 \times 3 \times 2 = 3$ $3 \times 6.9 = 20.7$ $0.5 \times 3 \times 2 = 3$
Total Living Area (Rounded):	1644 Sq ft	

3402 Oak Lawn, Dallas, Texas 75219

641 SF/Appraiser - C.L. McDade & Company 12/29/2021

Total Rentable Area – 6,949 SF

Sizes & dimensions noted are approximate & not guaranteed. Tenant/Agent to verify.



TOTAL Sketch by a la mode, Inc.

Area Calculations Summary

Living Area
Undefined Area

640.98 Sq ft

Calculation Details

$18.9 \times 32 = 604.8$
 $2.7 \times 6.7 = 18.09$
 $2.7 \times 6.7 = 18.09$

Total Living Area (Rounded):

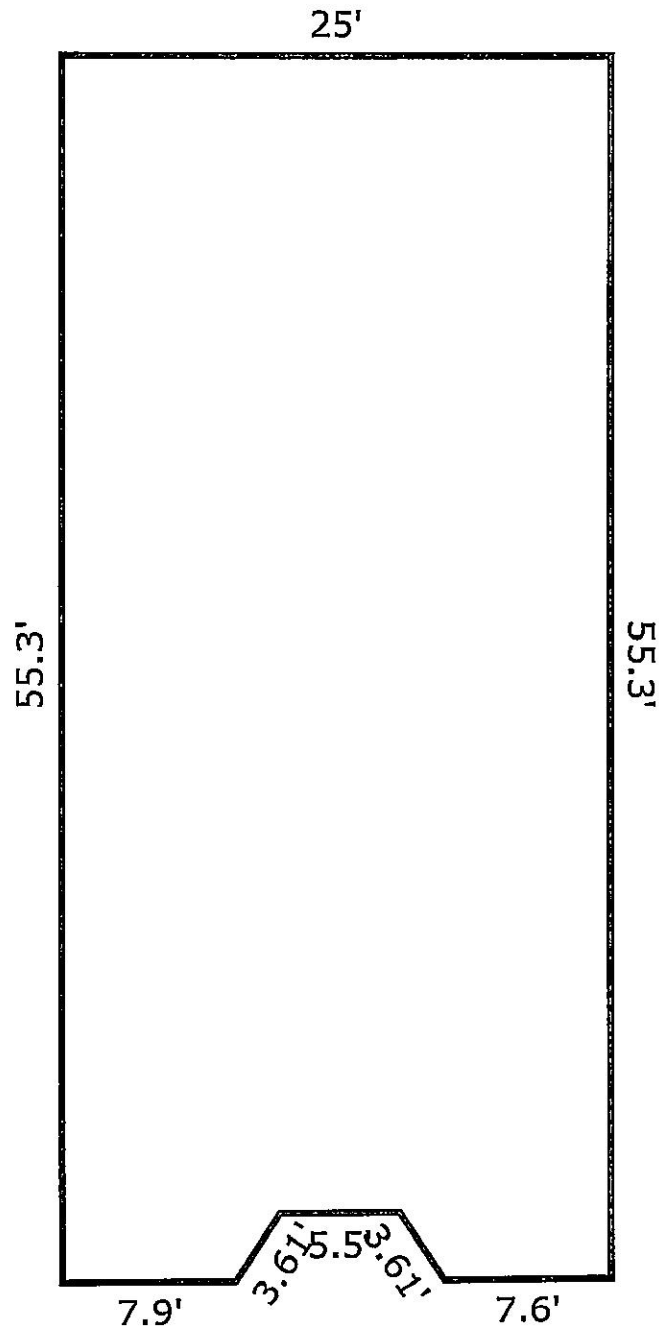
641 Sq ft

3404 Oak Lawn, Dallas, Texas 75219

1,360SF/Appraiser - C.L. McDade & Company 12/29/2021

Total Rentable Area – 6,949SF

Sizes & dimensions noted are approximate & not guaranteed. Tenant/Agent to verify.



TOTAL Sketch by a la mode, Inc.

Area Calculations Summary

Living Area
Undefined Area

1360 Sq ft

Calculation Details

$25 \times 52.3 = 1307.5$
 $3 \times 7.6 = 22.8$
 $0.5 \times 3 \times 2 = 3$
 $3 \times 7.9 = 23.7$
 $0.5 \times 3 \times 2 = 3$

Total Living Area (Rounded):

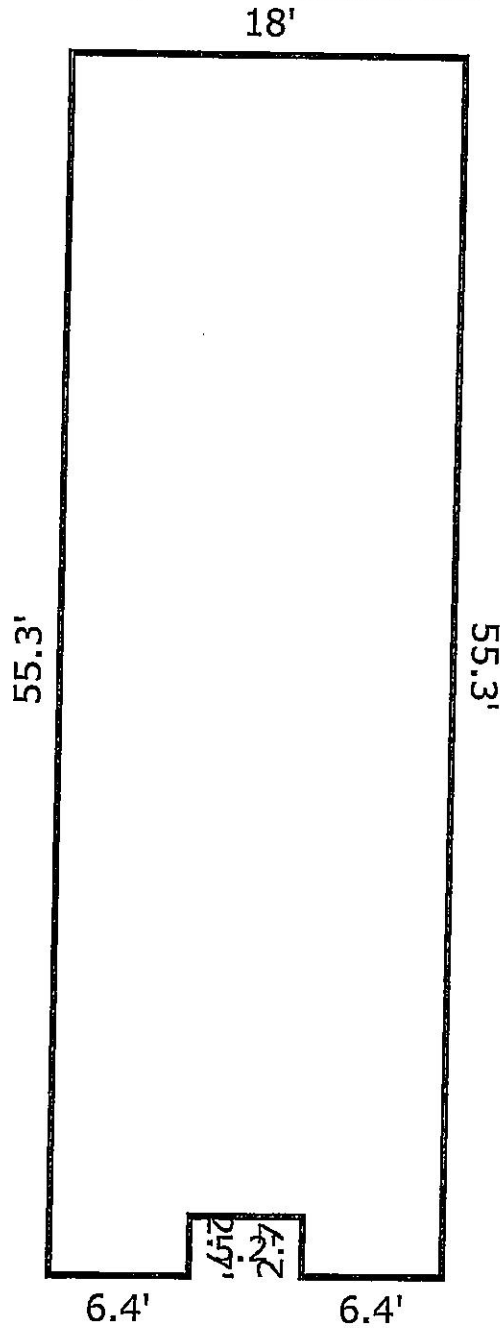
1360 Sq ft

3406 and 3408 Oak Lawn, Dallas, Texas 75219

981 SF/Appraiser - C.L. McDade & Company 12/29/2021

Total Rentable Area – 6,949 SF

Sizes & dimensions noted are approximate & not guaranteed. Tenant/Agent to verify.



TOTAL Sketch by a la mode, inc.

Area Calculations Summary

Living Area
Second Floor

981.36 Sq ft

Calculation Details

$18 \times 52.6 = 946.8$
 $2.7 \times 6.4 = 17.28$
 $2.7 \times 6.4 = 17.28$

Total Living Area (Rounded):

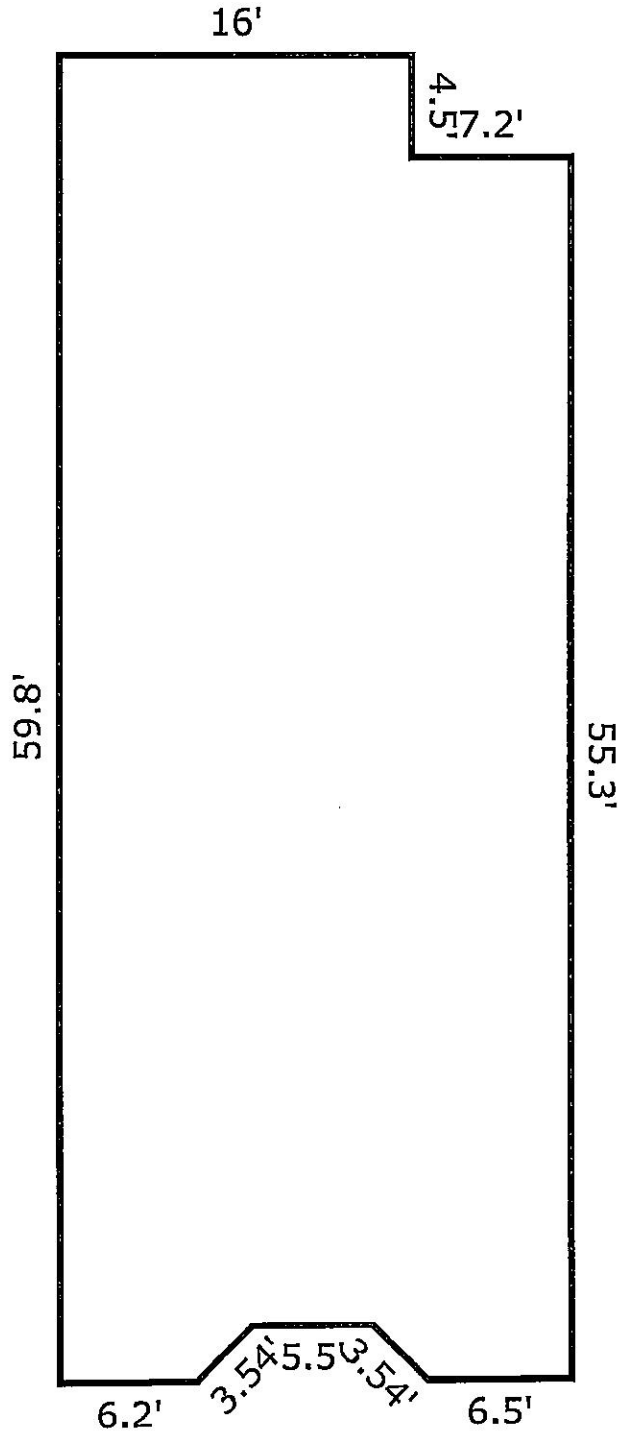
981 Sq ft

3410 Oak Lawn, Dallas, Texas 75219

1,335 SF/Appraiser - C.L. McDade & Company 12/29/2021

Total Rentable Area - 6,949SF

Sizes & dimensions noted are approximate & not guaranteed. Tenant/Agent to verify.



Area Calculations Summary

Living Area
First Floor

1334.96 Sq ft

Calculation Details

16×4.5	=	72
23.2×52.8	=	1224.96
2.5×6.2	=	15.5
$0.5 \times 2.5 \times 2.5$	=	3.12
2.5×6.5	=	16.25
$0.5 \times 2.5 \times 2.5$	=	3.12

Total Living Area (Rounded):

1335 Sq ft