



RETAIL

2224/2230 UNION STREET

Two newly demised spaces on prime Union Street block

maven
OFFICE

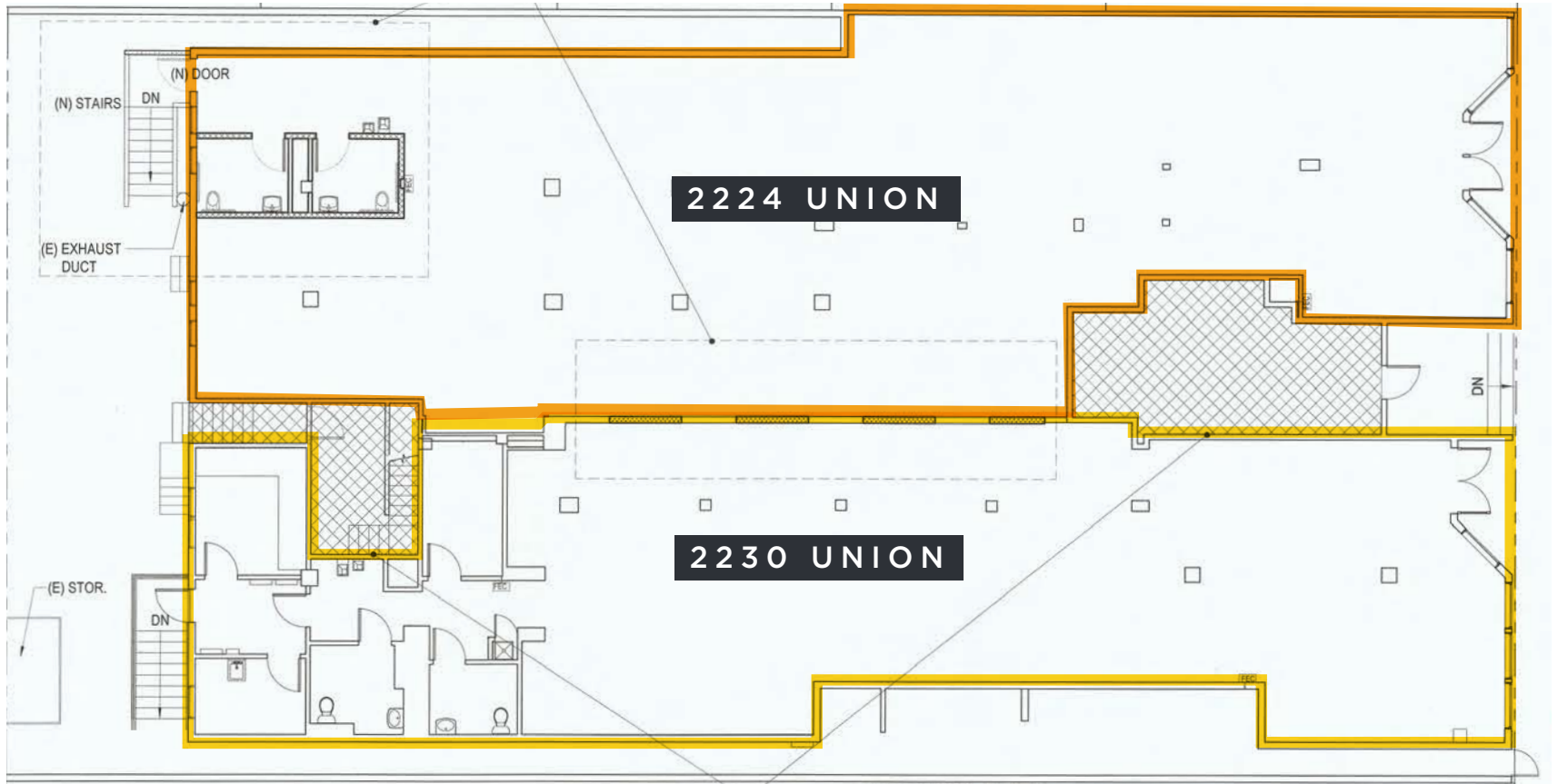


FEATURES

Well-located retail spaces situated in the heart of San Francisco's prestigious Union Street, boasting 3,883 and 3,157 rentable square feet of prime retail spaces. With an attractive storefront, these space feature tall display windows, high ceilings, and excellent visibility, making it a standout location for businesses looking to establish themselves on one of the best retail blocks in San Francisco. You'll also enjoy a prime location on Union Street, surrounded by some of the most popular and well-known retail brands in the city, including Sephora, Vuori, Palmetto, Brixton, Soul Cycle, and Luke's Local.

Union Street is one of the most desirable shopping destinations in San Francisco, with a mix of upscale boutiques, trendy cafes, and popular restaurants. This retail space offers a rare opportunity to become a part of this dynamic and thriving community.

FLOOR PLAN



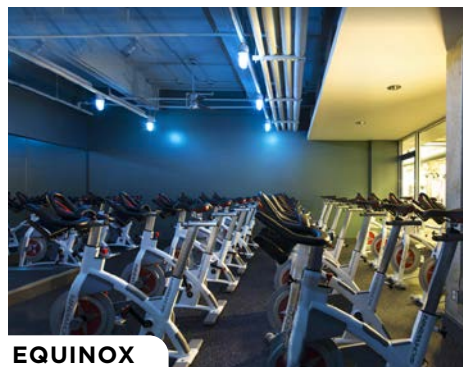


FEATURES

- Two retail spaces on a great Union Street block, the spaces were previously connected and housed the former Sur La Table
- 2224 Union: +/- 3,883 SF
- 2230 Union: +/- 3,157 SF
- 67 Feet of Street Frontage on Union Street, with recently installed security gate
- Completely renovated in 2024
- Seismically upgraded within the last 10 years
- High Ceilings
- Demised storage, bathroom, and employee areas
- Nearby neighbors include Wrecking Ball Coffee Roasters, Equinox, Sephora, Luke's Local, Jo Malone and more



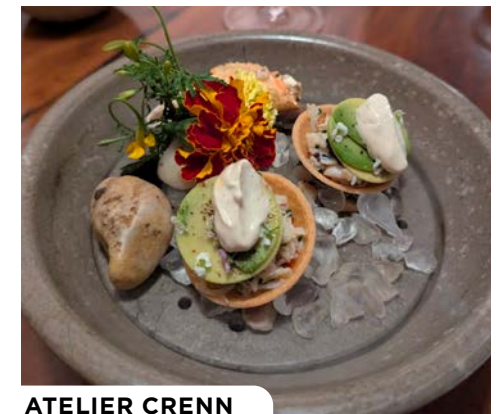
LUKE'S LOCAL



EQUINOX



CASARO OSTERIA



ATELIER CRENN



WRECKING BALL COFFEE



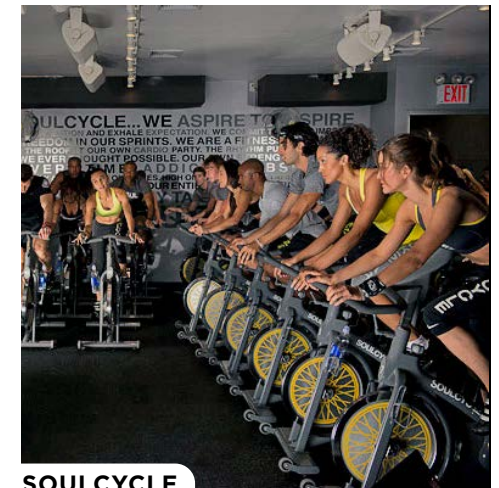
SEPHORA



VUORI



WILDSEED



SOULCYCLE

UNION STREET /COW HOLLOW

The Union Street Shopping District is a popular and upscale shopping destination located in the Cow Hollow neighborhood of San Francisco. Spanning several blocks of Union Street, the shopping district is known for its trendy boutiques, upscale shops, and chic cafes and restaurants. The Union Street Shopping District offers a mix of local and national retailers, catering to a diverse range of shoppers. Some of the most popular brands and retailers in the area include Sephora, Lululemon, Soul Cycle, and Athleta. However, there are also plenty of independent boutiques and specialty shops that offer a unique shopping experience. The shopping district is also known for its vibrant nightlife, with a variety of bars, restaurants, and cafes offering an array of dining and drinking options. The area is particularly popular for brunch, and there are plenty of cozy cafes and trendy brunch spots to choose from. In addition to shopping and dining, the Union Street Shopping District is also home to a number of community events throughout the year. One of the most popular is the Union Street Festival, which takes place each year in June and features live music, arts and crafts vendors, and a wide variety of food and drink offerings. Overall, the Union Street corridor is a must-visit destination for shoppers and foodies alike, offering a unique blend of upscale shopping, trendy dining, and community events in one of San Francisco's most picturesque neighborhoods.

NEIGHBORHOOD

ANOMIE

EQUINOX

isalis

SEPHORA

Wrecking Ball
Coffee Roasters

JO MALONE
LONDON

Celeste

BUCHANAN STREET		UNION STREET	
WildSeed	2000	2000	2001
Routier Leather Goods	2020		2001 Shaw Shoes
Saints	2020		2001 2 Bella
Flores	2030		2001 Hunan Empire Restaurant
Parcelo Watches	2030		2031 Bien-Etre
Union Canabis	2030		2033 Blue Whale
	2030-A		2035 Bleu Coffee
The Palm House	2032		2055 Muesi Cafe
Images of the North Gallery	2040		2055 Equinox
Roadwater Skin Care	2040		2055-A Citizens of EarthBar
Mivai	2040		2071 KUHL
Christian's Real Estate	2040		2083 Sephora
West Coast Leather	2060		2087 Zare Medical
Le Marcel Bakery for Dogs	2068		2095 Soul Cycle
Scrap Pack	2068		
Honey and Stardust	2070		
Prado Flowers	2072		
Cucalon Orthodontics	2078		
B12 Love Lounge	2086		
Vuori	2090		
WEBSTER STREET		UNION STREET	
Vevo Optics Marina	2100	2100	2101 Compass
Eve	2102		2103 Bishopfox
		2116	2107 Summerall Law
Jam A Roo Kids	2118		2113 LashLab
Barre Union (Formerly Daily Method)	2118		2115 Joy Joy Nail
Mishka Lounge	2124-B		2125 Canvas&Bronze
			2127 isalis
Casaro Osteria	2136		2133 Eyes in Disguise
The Brixton	2140		2135 AT&T
Palmetto Superfoods	2150		2147 ATYS Eclectic Gifts
Kenlynn	2154		2147 Fitted by Pedro
Union Street Papery	2166		2147 Nail Today
Pressed Juice	2162		2147 Corcoran Group
Available / Verizon	2162 B		2149 Anomie
			2157 Jo Malone
Casper	2174		2163 Telve
			2165 Celeste
Hakko	2184		2167 Available
			2181A The New Bar
			2181 Niko Niko
Lukes Local	2190		2185 Cameron James Salon
			2187 Bobby London
Michaels Wine & Spirits	2198		2189 Noa Pure
			2191 Union Street Roastery
FILLMORE STREET		UNION STREET	
Engel&Voikers	2200	2200	2201 Available
The Bud Stop	2200		2203 Images for Hair
		2206	2205 Le Bouquet Flowers
1887 Capezio Dance / Available		2208	2213 Nails 2001
Giri Math	2206	2224 AVAILABLE	2217 Sofa U Love
AVAILABLE	2224	2230 AVAILABLE	2223 Available
ACE Physical Therapy	2230	2238	2229 Union Street Inn
Madu Salon	2250		
Bella Bridesmaids	2250-1B		
		2254	2263 Happy Butterfly
Jack and Jill Pilates	2254	2266	2271 Wrecking Ball Coffee Roasters
Lovely	2266	2266-A	2277 Lisa's Lash Spot
Zorina	2274	2278	2285 Arthur Sebastian Hair Salon
Bridal Breeze	2274	2284	
Danielle	2278	2286	
Bamboo Spa	2284		
Golden West	2286		
Rose's Cafe	2298		
			2299 Marina Submarine (Sandwich Shop)
STEINER STREET		Trek Bicycle	

LE MARCEL
SPECIALTY BAKERY FOR DOGS

PALM HOUSE

Palmetto
Superfoods

Casper

vuori

LUKE'S LOCAL
GROCERY



Contact

PAMELA MENDELSON

office 415.404.6650

pam@mavenproperties.com

DRE #00953050

GLORIA NORDBAKK

office 415.225.0626

gloria@mavenproperties.com

DRE #0220740

SAGE MIRSKY

office 907.821.1049

sage@mavenproperties.com

DRE #02238781

NOTICE: This information has been secured from sources we believe to be reliable but we make no representations, warranties, express or implied, as to the accuracy of the information. Listing broker has been given enough information to provide only a preliminary interest in the property. The materials are not to be considered fact. The information contained herein is not a substitute for thorough due diligence investigation. References to square footage, zoning, use, or age are approximate. Please contact the San Francisco Planning Department to verify zoning at (415) 558-6378, as neither broker or landlord represent that this space is suitable for your use. Tenant or Buyer must verify the information at their own expense and bears all the risk for any inaccuracies. By receiving these materials you are agreeing to the disclaimers set forth herein. DRE#01878802

466 Green Street Suite #203

San Francisco, CA 94133

415-781-770

www.mavenproperties.com