

6,072 SF SUBLEASE  
**360 MOUNT KEMBLE AVENUE**  
MORRISTOWN, NEW JERSEY



Available for Immediate Occupancy

## SPACE FEATURES

- 3<sup>rd</sup> Floor: 6,072 SF
- Available Through: June 2021
- NEW 2016 build-out
  - 9 offices and 11 workstations
  - Large conference room
  - New wiring
- Asking Rent: Available Upon Request
- Furniture: May Be Available
  
- Property features include:
  - Renovated lobby and common areas
  - Full-service cafeteria with outdoor seating
  - Fitness center
  - On-site management
  - Walking path surrounding the pond
- Minutes from downtown Morristown, retail, restaurants and hotels
- Close proximity to I-287, Route 24 and Route 202

For more information, please contact:

**ROBERT DONNELLY, JR., CCIM**

Executive Managing Director

+1 973 292 4621

[robert.donnelyjr@cushwake.com](mailto:robert.donnelyjr@cushwake.com)

**BRIAN DECILLIS**

Managing Director

+1 973 292 4631

[brian.decillis@cushwake.com](mailto:brian.decillis@cushwake.com)



**CUSHMAN &  
WAKEFIELD**

Licensed Real Estate Broker

1150 Headquarters Plaza

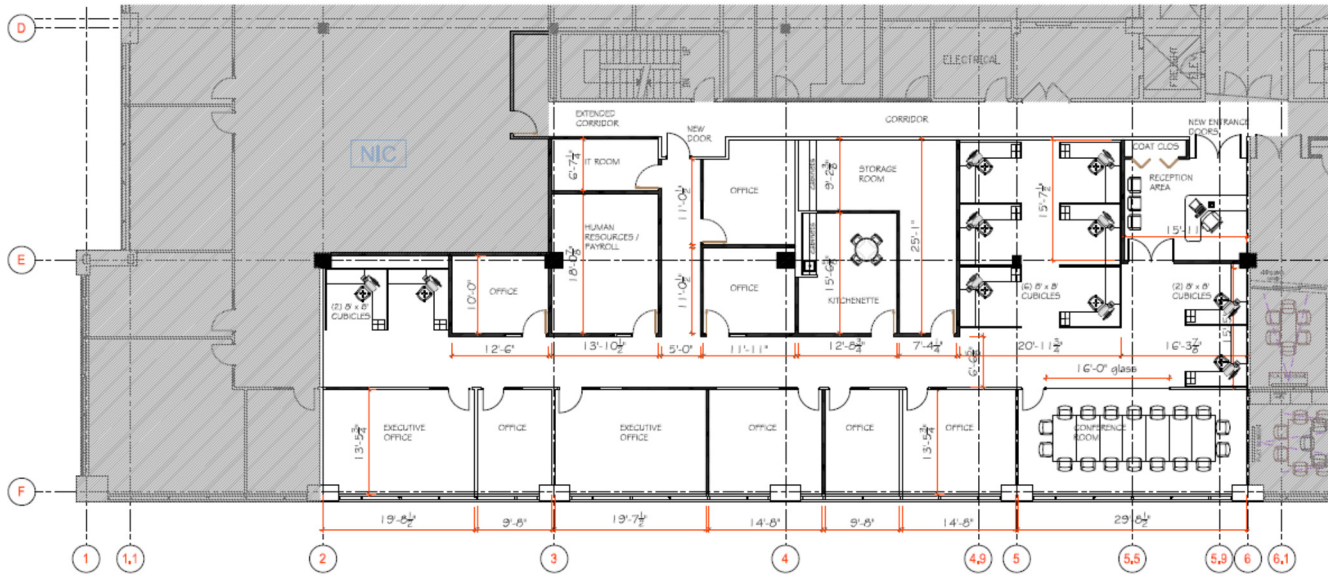
Morristown, NJ 07960

[www.cushmanwakefield.com](http://www.cushmanwakefield.com)

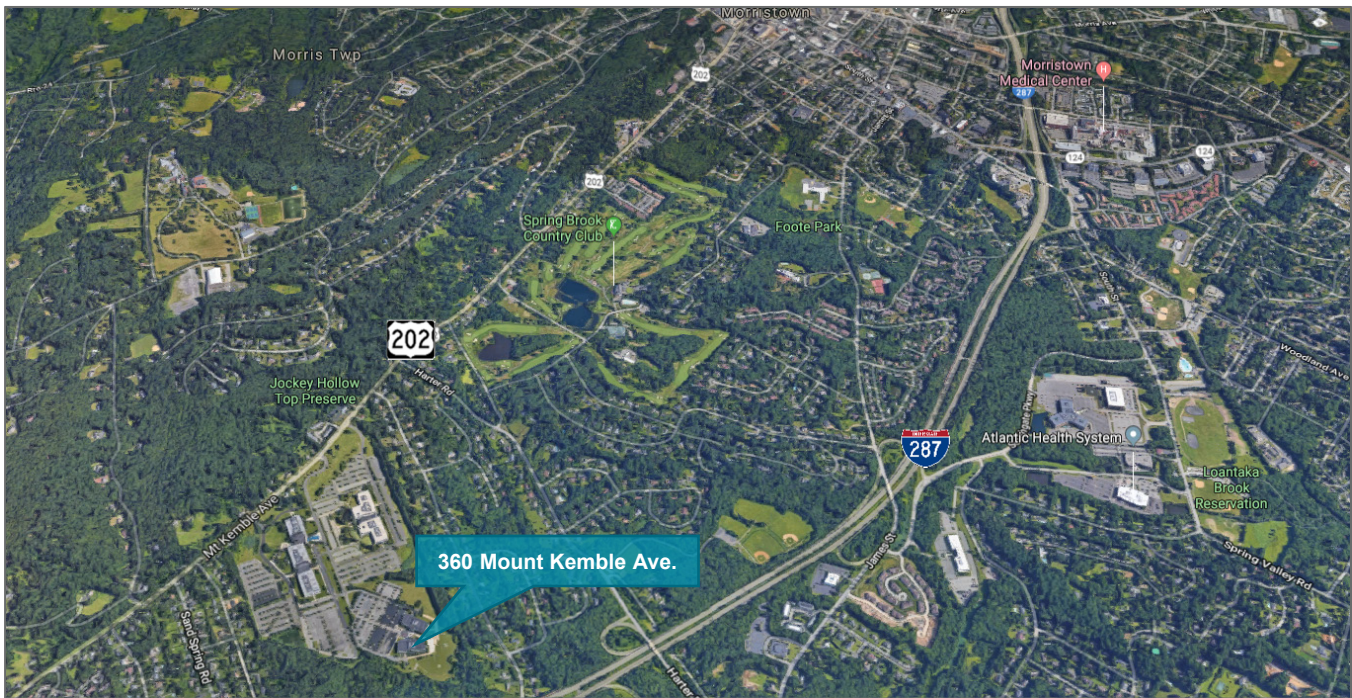


# 6,072 SF SUBLEASE 360 MOUNT KEMBLE AVENUE MORRISTOWN, NEW JERSEY

## FLOOR PLAN



## AERIAL MAP



For more information, please contact:

**ROBERT DONNELLY, JR., CCIM**  
Executive Managing Director  
+1 973 292 4621  
robert.donnelyjr@cushwake.com

**BRIAN DECILLIS**  
Managing Director  
+1 973 292 4631  
brian.decillis@cushwake.com



Licensed Real Estate Broker  
1150 Headquarters Plaza  
Morristown, NJ 07960  
www.cushmanwakefield.com