



600 SAN RAMON VALLEY BLVD

DANVILLE, CA 94526



±3,861 SF
AVAILABLE



4.6:1000
PARKING RATIO

Quality office space available for lease.

Great visibility with monument signage

Strong, local ownership

Desirable location near Downtown Danville restaurants and retail

Well-manicured property with upgraded common area

Ideal parking ratio featuring 66 stalls, of which 25 are covered

\$2.75 PSF

FULL SERVICE PROMOTIONAL LEASE RATE
(SUBJECT TO TENANT IMPROVEMENTS)

EMMA HIMSL | HIMSL Real Estate | 925.484.5223 | emma@himsrealstate.com | LIC N° 02108950

WILL BALLOWE | Kidder Mathews | 925.389.2499 | will.ballowe@kidder.com | LIC N° 02053125

[KIDDER.COM](https://www.kidder.com)

This information supplied herein is from sources we deem reliable. It is provided without any representation, warranty, or guarantee, expressed or implied as to its accuracy. Prospective Buyer or Tenant should conduct an independent investigation and verification of all matters deemed to be material, including, but not limited to, statements of income and expenses. Consult your attorney, accountant, or other professional advisor.

HIMSL
REAL ESTATE

km Kidder
Mathews

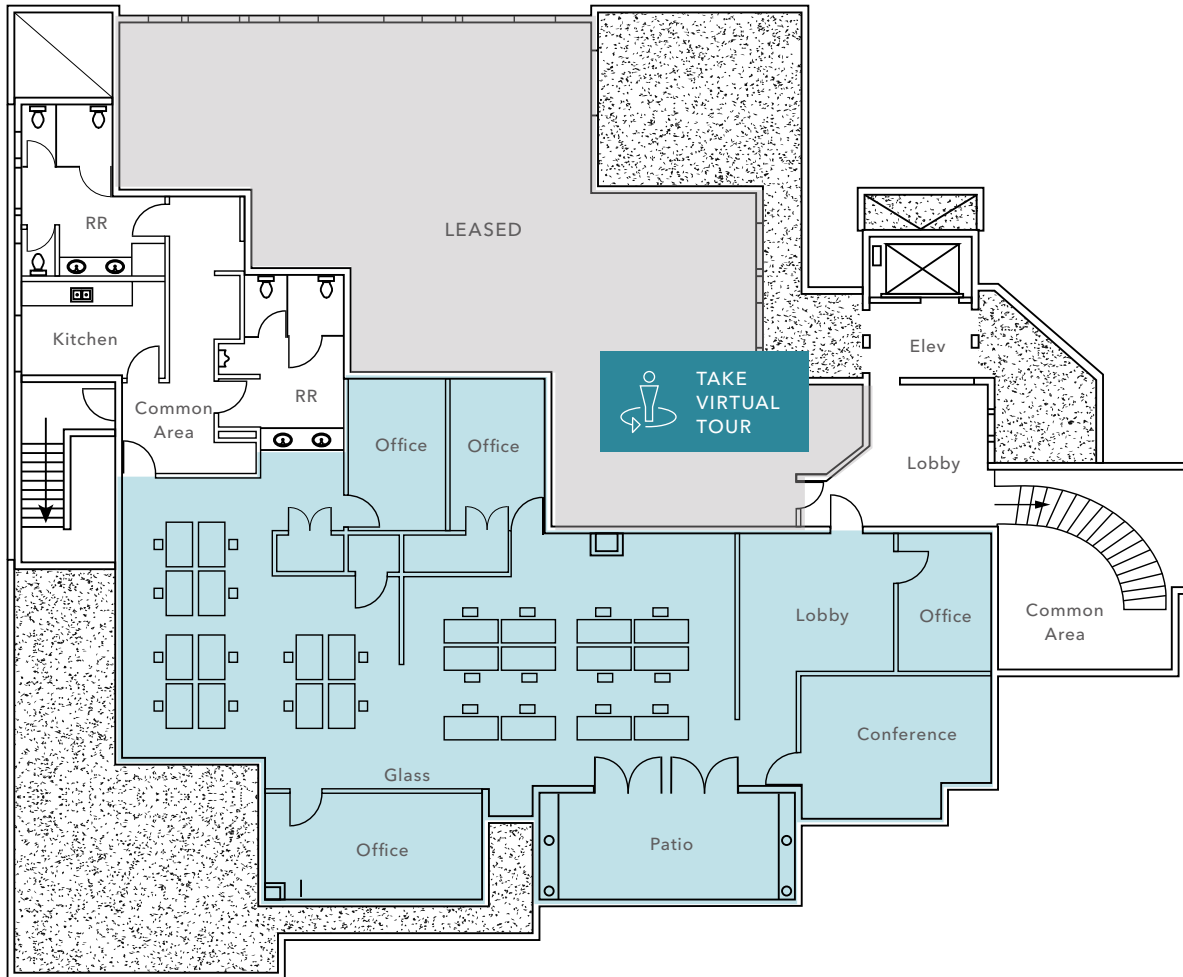
SUITE 200

±3,861 SF

AVAILABLE

NOW

AVAILABLE



FLOOR PLAN NOT TO SCALE

KIDDER.COM

This information supplied herein is from sources we deem reliable. It is provided without any representation, warranty, or guarantee, expressed or implied as to its accuracy. Prospective Buyer or Tenant should conduct an independent investigation and verification of all matters deemed to be material, including, but not limited to, statements of income and expenses. Consult your attorney, accountant, or other professional advisor.

HIMSL
REAL ESTATE

km **Kidder Mathews**

SUITE 200 INTERIOR PHOTOS



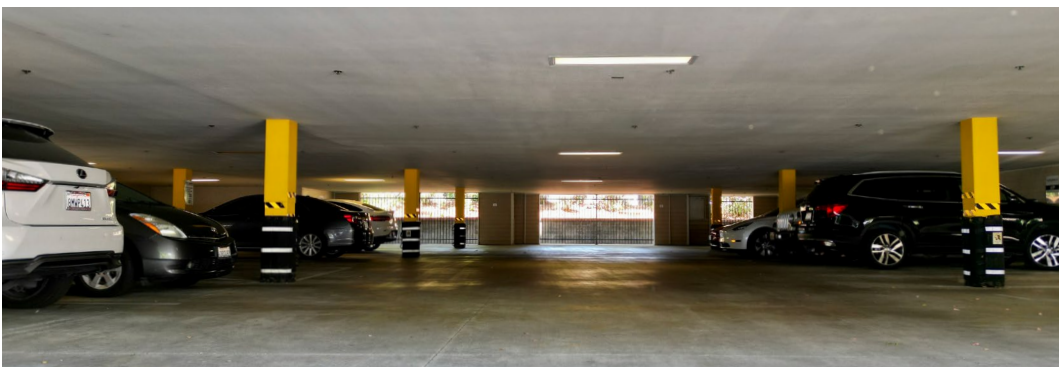
[KIDDER.COM](https://www.kidder.com)

This information supplied herein is from sources we deem reliable. It is provided without any representation, warranty, or guarantee, expressed or implied as to its accuracy. Prospective Buyer or Tenant should conduct an independent investigation and verification of all matters deemed to be material, including, but not limited to, statements of income and expenses. Consult your attorney, accountant, or other professional advisor.

HIMSL
REAL ESTATE

km Kidder
Mathews

EXTERIOR PHOTOS



[KIDDER.COM](https://www.kidder.com)

This information supplied herein is from sources we deem reliable. It is provided without any representation, warranty, or guarantee, expressed or implied as to its accuracy. Prospective Buyer or Tenant should conduct an independent investigation and verification of all matters deemed to be material, including, but not limited to, statements of income and expenses. Consult your attorney, accountant, or other professional advisor.

HIMSL
REAL ESTATE

km Kidder
Mathews

INTERIOR BUILDING PHOTOS



[KIDDER.COM](https://www.kidder.com)

This information supplied herein is from sources we deem reliable. It is provided without any representation, warranty, or guarantee, expressed or implied as to its accuracy. Prospective Buyer or Tenant should conduct an independent investigation and verification of all matters deemed to be material, including, but not limited to, statements of income and expenses. Consult your attorney, accountant, or other professional advisor.

HIMSL
REAL ESTATE

km Kidder
Mathews

